



## Certificate of analysis

Batch: 128362479  
Article: 83867 Kukoamine B  
Manufacturing date: 12/2021  
Expiry date: 08/2026

Test	Unit	Limit	Testresult
Appearance, SOP 100005		crystals	Conform
Color, SOP 100006		brownish	Conform
Identification (HPLC-HR/MS), SOP 204125		Conform	Conform
Identification (UV spectrum from HPLC-DAD analysis) according to specification, SOP 204311		Conform	Conform
Identification (IR-spectroscopy, Ph.Eur. 10.3, 2.2.24)/USP 43 NF 37 <197>), SOP 206000		Conform	Conform
Identification (1H-NMR-spectroscopy), (outsourced), SOP 206010		Conform	Conform
Identification (13C-NMR-spectroscopy), (outsourced), SOP 206020		Conform	Conform
Water content, (micro determination, coulometric titration), Ph.Eur. 10.0., 2.5.32, SOP 304291 Vers. 2018-01: Mean value	%		1.2
Peakpurity, (HPLC), SOP 401367		Conform	Conform
Kukoamine B (HPLC), method 1 (%AU), SOP 441643	%	> = 90.00	97.13

**Certificate of analysis**

Batch: 128362479  
Article: 83867 Kukoamine B

Test	Unit	Limit	Testresult
Residual solvents, (headspace-GC), SOP 805765:			
Residual solvents	%		0.89
Inorganic impurities, (ICP-MS), for reference substances, SOP 811701:			
Sodium	%		< 0.1
Potassium	%		< 0.1
Magnesium	%		< 0.1
Calcium	%		< 0.1
Aluminium	%		< 0.1
Phosphorus	%		< 0.1
Sulfur	%		< 1.0
Content, SOP 890000, calculated in (%): (100 - water - residual solvents - inorganic impurities) x chromatographic purity / 100	%		95

This PhytoLab phyproof® reference standard is by definition a primary reference standard and does not need to be qualified against any other reference standard. The identity of the reference standard has been substantiated by at least two independent analytical methods such as IR, NMR, UV or MS analysis. A mass balance approach, which takes chromatographic purity into account, as well as the contents of water, residual solvents, inorganic impurities, and the counter ion (if the reference standard is present as a salt) is applied in the calculation of the absolute purity as given in this COA (see description of SOP 8900XX).

The absolute purity value (and not just the chromatographic purity result obtained by means of HPLC or GC) must be used in all quantitative calculations as the chromatographic techniques do not yet account for water, residual solvents and inorganic impurities.

**Further information:**

**Shelf life/stability:** The stated expiration date applies when the reference substance is stored in the original unopened container within the specified temperature range. PhytoLab does not guarantee the stability of the reference substance once the vial has been opened.

**Long-term storage and handling:** the reference standard should be stored in the original unopened vial, protected against light and humidity in an airtight container, within the temperature range given on the label and accompanying data sheet. If stored below room temperature, the vial should be warmed up to room temperature in a desiccator before it is opened in order to avoid condensation of humidity. The user assumes responsibility for deciding how previously opened reference standard vials should be used and the user must ensure that the contents of opened vials are still suitable for their intended use.

**Exact weight:** the exact weight of each vial is given on the label of the inner vial to two decimal places. This information may be used to produce stock solutions of a known concentration without having to weigh in the reference substance again. If used for this purpose, the content of the vial must be quantitatively transferred to a volumetric flask and filled up to the required level. Please note that PhytoLab is unable to guarantee the stability of the reference standard in solution.

**Intended use:** this reference standard is solely intended for laboratory analytical purposes, research & development, and scientific teaching and training purposes. It may not be used for any other purpose and particularly not for use in, or the production of, food, animal feed, human or veterinary drugs, cosmetics, medicinal products or diagnostic agents, including in-vitro diagnostic



## Certificate of analysis

Batch: 128362479  
Article: 83867 Kukoamine B

Test	Unit	Limit	Testresult
------	------	-------	------------

agents. PhytoLab is unable to guarantee the suitability of this reference standard for any particular application other than its qualitative and quantitative use in chromatography and identification testing.

Further information about this reference standard can be found on the accompanying data sheet or in our webshop. Spectral and chromatographic data, and a description of the applied chromatographic method, are provided in the attachments to this COA. A detailed explanation of all data given on the COA can be found in the guide that is available from the download area in our webshop, where you can also download all of the safety data sheets.

Vestenbergsreuth, 18.08.22

  
Dr. Jan Glaser  
Manager Reference Substances



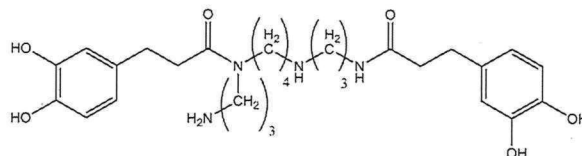
**PhytoLab**

SAFEGUARDING BOTANICAL QUALITY.

## Product Data Sheet

### Kukoamine B

Product #: 83867



### Physicochemical Data

CAS #:	164991-67-7
Molecular formula:	C <sub>28</sub> H <sub>42</sub> N <sub>4</sub> O <sub>6</sub>
Molecular weight [g/mol]:	530.66
Substance class:	Nitrogen-containing Compounds
Subgroup 1:	Amines
Solubility:	Soluble in methanol. Please note that this solubility information is based on in-house experience or taken from published data. It is not meant to guarantee solubility up to a specific concentration, nor does it guarantee stability of the reference substance in solution.

### Additional Information

Source: botanical origin

Long-term storage conditions: < -15 °C

Manufacturer: PhytoLab GmbH & Co.KG  
Dutendorfer Straße 5-7  
91487 Vestenbergsgreuth  
Germany

Tel.: +49 9163 88-395  
Fax: +49 9163 88-456  
Mail: [ref-substances@phytolab.de](mailto:ref-substances@phytolab.de)  
Shop: <https://phyproof.phytolab.com>

**phy|proof**®

Proof of Quality for Markers

Page 1 of 1



printed: 18.08.2022



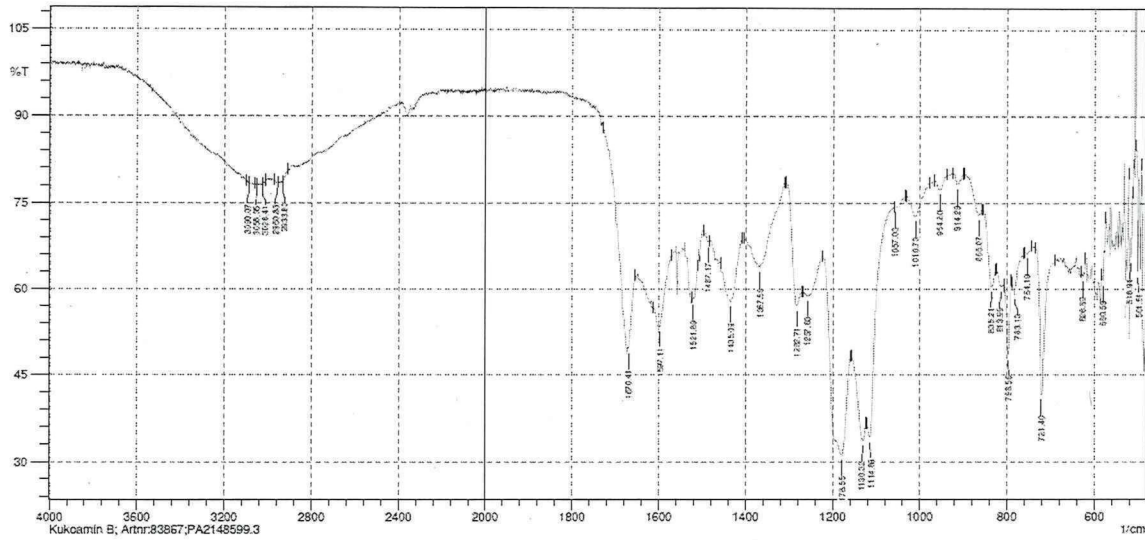
## Supplements

**Kukoamine B**  
**Product # 83867**

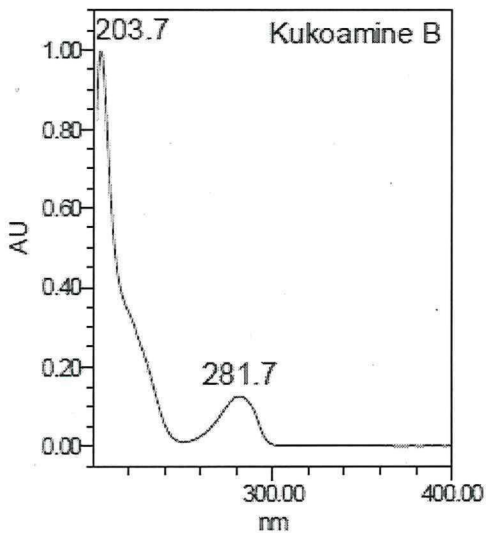
**Batch # 11398**

Identity tests:

### IR spectrum



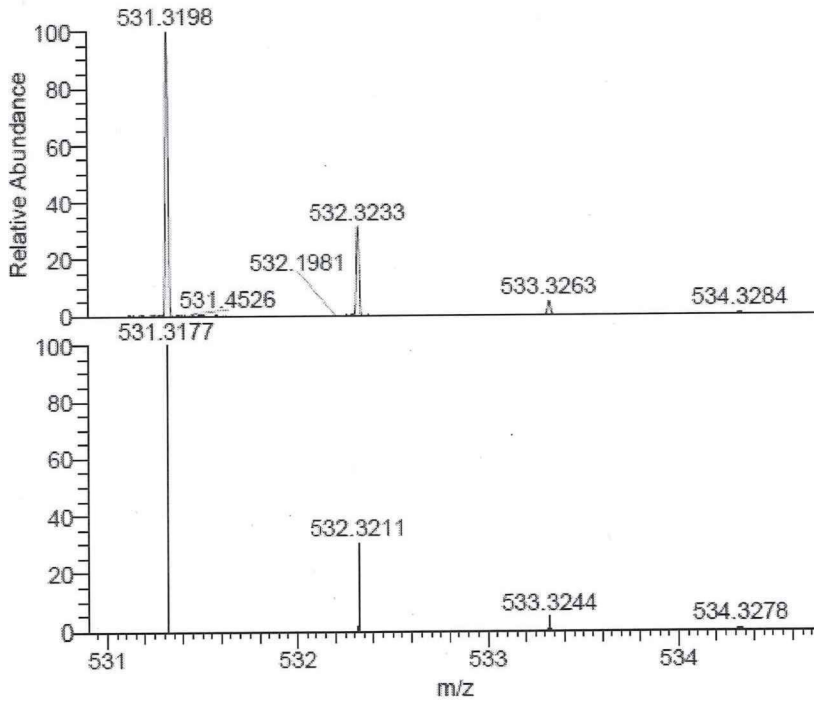
### UV spectrum (derived from HPLC/PDA)





**MS spectrum (ESI)**

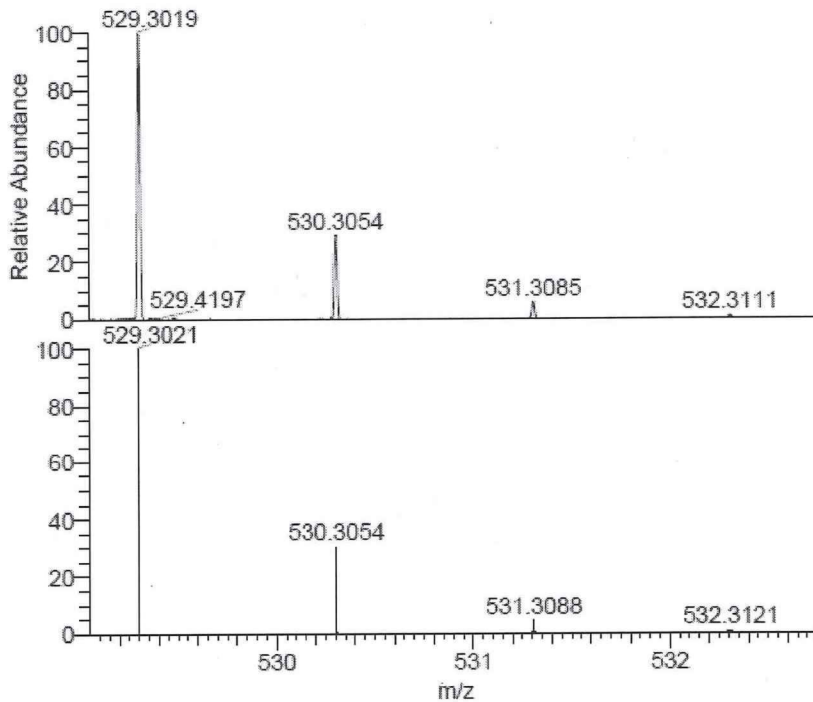
Detection: positive mode (compared with predicted spectrum)



NL:  
2.08E5  
191114\_014#695 RT: 7.77  
AV: 1 SB: 715 4.12-7.27 ,  
8.49-13.47 T: FTMS {1,1} + p  
ESI Full ms [100.00-1500.00]

NL:  
7.15E5  
C<sub>28</sub> H<sub>43</sub> N<sub>4</sub> O<sub>8</sub>:  
C<sub>28</sub> H<sub>43</sub> N<sub>4</sub> O<sub>8</sub>  
pa Chrg 1

Detection: negative mode (compared with predicted spectrum)



NL:  
1.54E5  
191114\_015#681 RT: 7.76  
AV: 1 SB: 158 7.73-8.47 ,  
10.12-11.16 T: FTMS {1,1} -  
p ESI Full ms  
[100.00-1500.00]

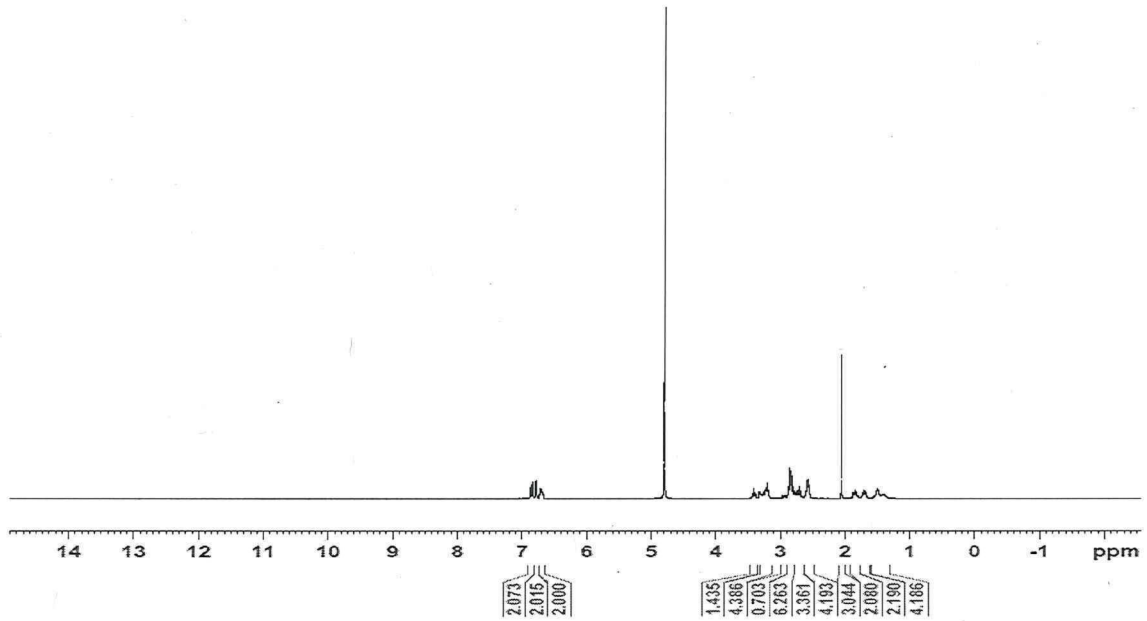
NL:  
7.15E5  
C<sub>28</sub> H<sub>41</sub> N<sub>4</sub> O<sub>8</sub>:  
C<sub>28</sub> H<sub>41</sub> N<sub>4</sub> O<sub>8</sub>  
pa Chrg 1



## NMR spectra

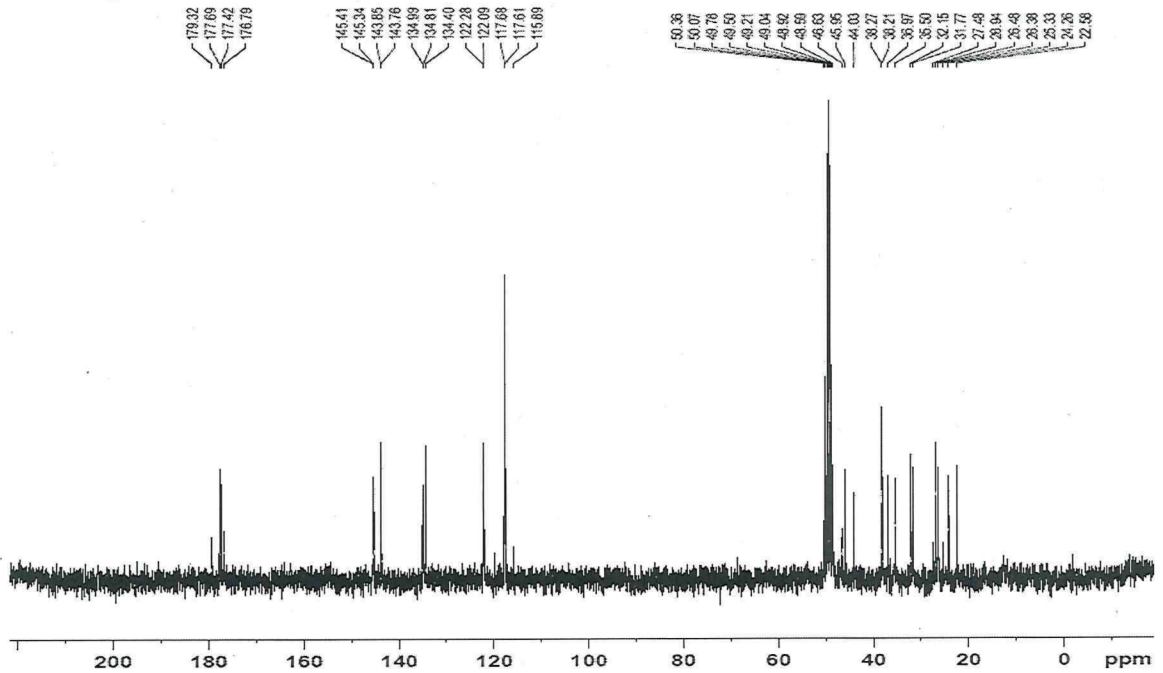
### <sup>1</sup>H-NMR

PhytoLab GmbH & Co. KG  
Kukoamin B, Chage 11398  
ca. 15.34mg ad 0.7mL D2O with one drop MeOD



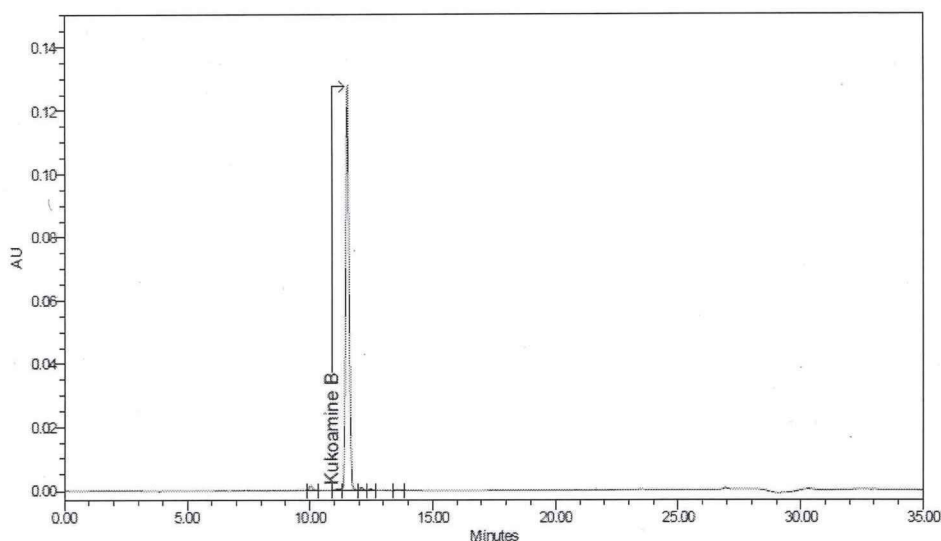
### <sup>13</sup>C-NMR

PhytoLab GmbH & Co. KG  
Kukoamin B, Chage 11398  
ca. 15.34mg ad 0.7mL D2O with one drop MeOD





Chromatographic purity:



Peak Results

Name	RT	Area	% Area
1	10.049	13204	1.08
2	11.317	7887	0.64

Name	RT	Area	% Area	
3	Kukoamine B	11.530	1189202	97.17
4		12.111	8050	0.66

Name	RT	Area	% Area	
5		12.473	3383	0.28
6		13.580	2074	0.17
Sum			100.00	

**Analytical conditions**

Column: Luna C18, 250 x 4.6 mm, 5 µm  
Mobile Phase: eluent A: 0.15% Trifluoroacetic acid  
eluent B: CH<sub>3</sub>OH  
Mode: gradient

Time [min]	Eluent A [%]	Eluent B [%]
0	90	10
20	20	80
25	20	80
27	90	10
35	90	10

Flow: 1.0 ml/min  
Injection Volume: 20 µl  
Column Temperature: 23 °C  
Sample concentration: approx. 16.4 mg/100 ml  
Sample preparation: dissolved in 10% CH<sub>3</sub>OH  
Detection: UV, 280 nm  
Special note: -

**Please note:** Values on the certificate of analysis may vary as these are average values of at least six injections while above chromatogram and report is only one example. Non-integrated peaks originate from the blank injection.