



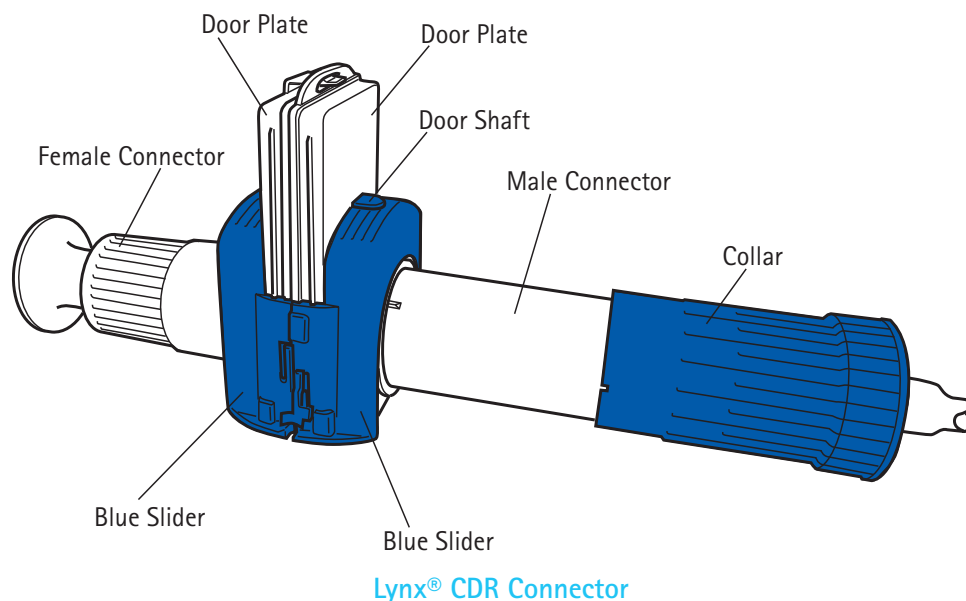
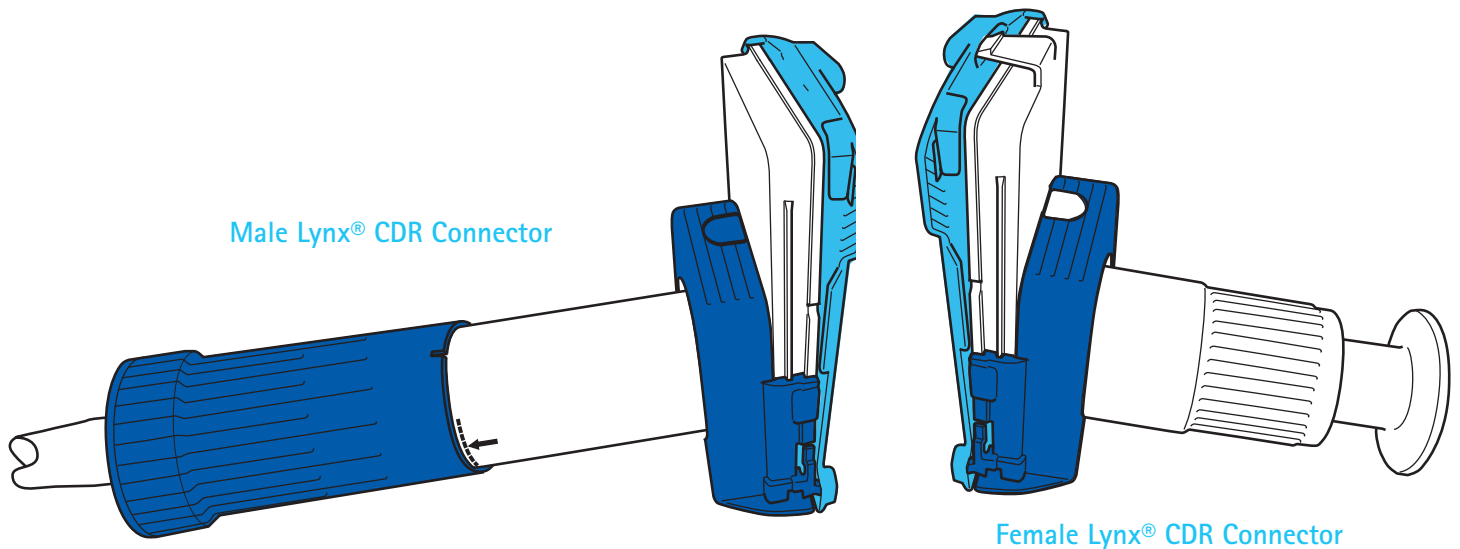
Lynx[®] CDR Connectors

User Guide

The M mark and Lynx are registered trademarks of Merck, KGaA, Germany. Copyright © 2015 EMD Millipore Corporation. All rights reserved.
UG1246EN00 Rev 1, 03/2016

Introduction

The Lynx[®] CDR Connector is a disposable device which allows up to six sterile connections, disconnections, and reconnections. The Lynx[®] CDR Connector allows the same device to be connected and reconnected while remaining sterile and leak free. When connected, the male and the female parts create the flow path.



Installing

NOTE If the connector is assembled onto a Mobius® Assembly or other assembly, go to [Connecting](#).

Ensure that the clamps used to fasten the tubing onto the Lynx® CDR Connector meets the pressure specifications for the installation.

1. Remove the connector from the bag.
2. Connect the Lynx® CDR Connector to the tubing or fitting on the system. Any size male connector can be used with any size female connector.
3. Autoclave or gamma irradiate the assembly as required. Refer to the Certificate of Quality for the device specifications.

Connector Side	Treatment			
	autoclaved from 121 to 131 °C for up to 30 minutes	may be autoclaved up to three times	must be gamma irradiated prior to autoclaving	may be gamma irradiated up to 45 kGy
Male	●	●	●	●
Female	●	●	n/a	●

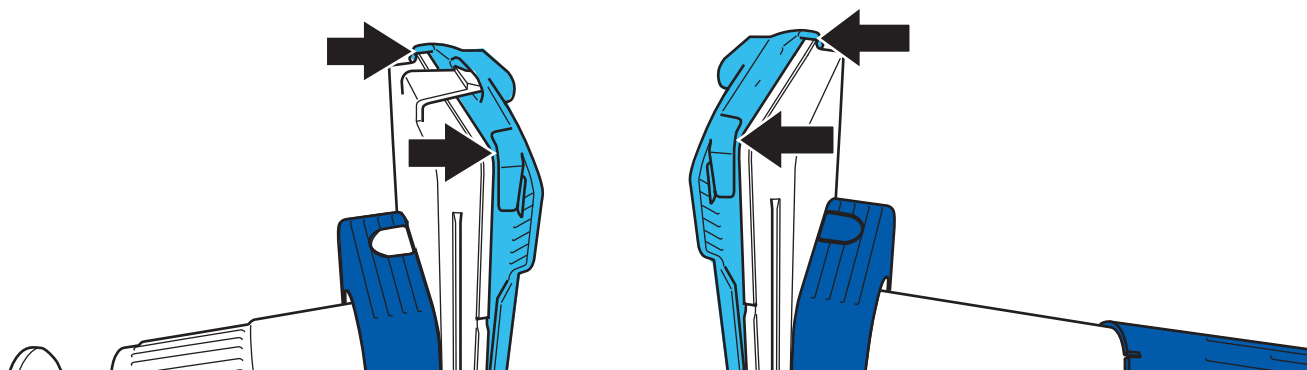
Connecting

NOTE Connections can be made wet and under pressure. The side with the higher pressure will determine the direction of the flow.

Empty the fluid lines when connecting to a new fluid to a system to prevent cross contamination.

If connecting to a chromatography system, prime the lines prior to connection.

1. Remove the covers from the plates on the male and female connectors by pulling the cover away from the plate.



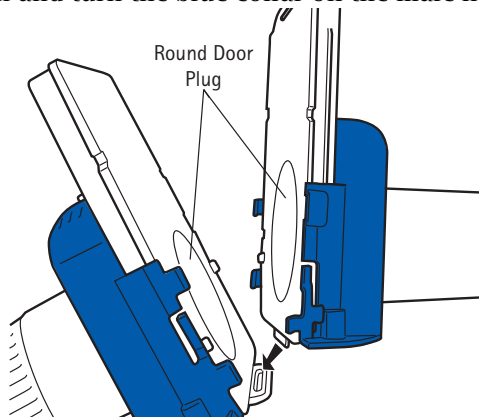
The covers should remain tethered to the connectors so they can be replaced onto the plates when necessary.

2. Place the tab on the bottom of the male plate into the slot on the bottom of the female plate.

NOTE Do not push the round door plug into the connector - this may breach sterility.

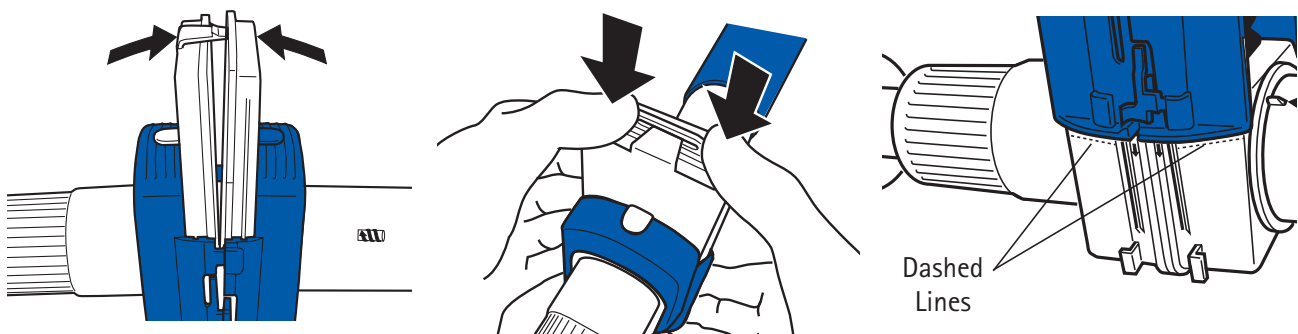
3. Push the plates together so that the keys on the top and sides of the plates lock into place.

- Grasping the connector as shown below, pull the blue slider up until it clicks into place and the dashed line is visible on the door plate.
- Push and turn the blue collar on the male handle toward the plates until it stops. The tab on the connector

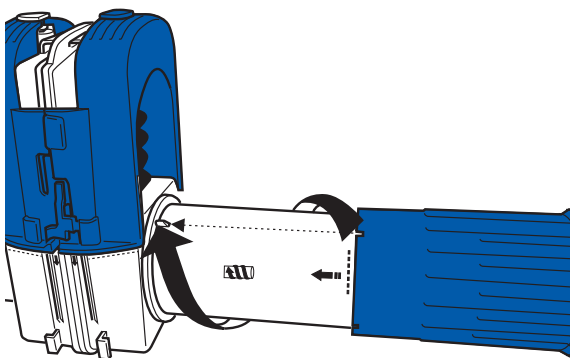


should lock into the slot on the collar.

- The fluid path is now open and ready for flow.



The pressure may now be increased from the maximum pressure during connection, 10 psi (0.7 bar), up to the maximum pressure during operation, 60 psi (4 bar).

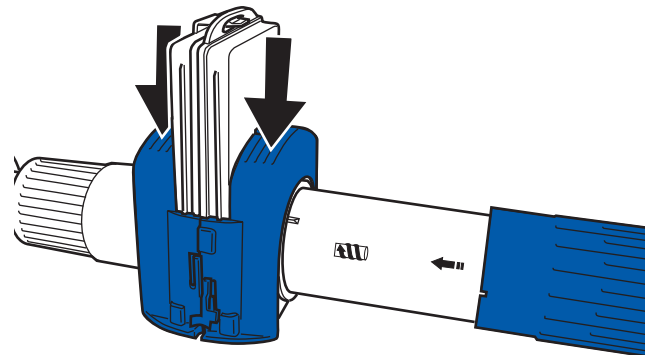
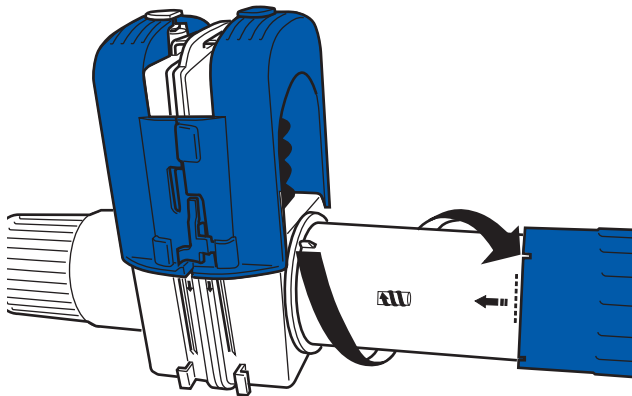


Disconnecting

NOTE: Disconnections can be made wet and under pressure. Stopping fluid flow into the connector by clamping the tubing prior to disconnecting is not required.

The system pressure must be no more than 10 psi (0.7 bar) psi when disconnecting the Lynx® CDR Connector.

1. Twist and pull the collar on the male connector away from the plates, one complete rotation, to close the fluid path. The dashed line and arrow on the male shaft should be visible.
2. Ensure that the blue sliders are on the tracks of the door plates. Push the blue sliders down until they lock into place. Ensure that the sliders are engaged on the four locks on the door plates.



3. Depress the tab on the top of the female plate to separate the connector.
4. Replace the covers on the plates.

Troubleshooting

Problem	Impact	Remedy
Both blue sliders on the same side disengage from door plates before the valve is connected.	STERILITY MAY BE BREACHED.	Replace the connector.
Blue slider disengages from door plates after the valve is connected.	STERILITY HAS NOT BEEN BREACHED.	DO NOT MOVE DOOR SHAFT. Snap the blue slider onto the door plate, ensuring that the slots on the blue slider align with the rails on the sterile housing and the top of the door shaft fits into the opening on the blue slider.
Door plug is pushed into housing before plates are connected.	STERILITY HAS BEEN BREACHED.	Replace the connector.
Black shaft cover comes off the shaft.	STERILITY HAS BEEN BREACHED.	Replace the connector.

Technical Assistance

For more information, contact the office nearest you or visit the Technical Service page at www.emdmillipore.com/techservice. Worldwide contact information is available at www.emdmillipore.com/offices.