

Prostate Specific Antigen (PSA), IHC-Paraffin Staining Report

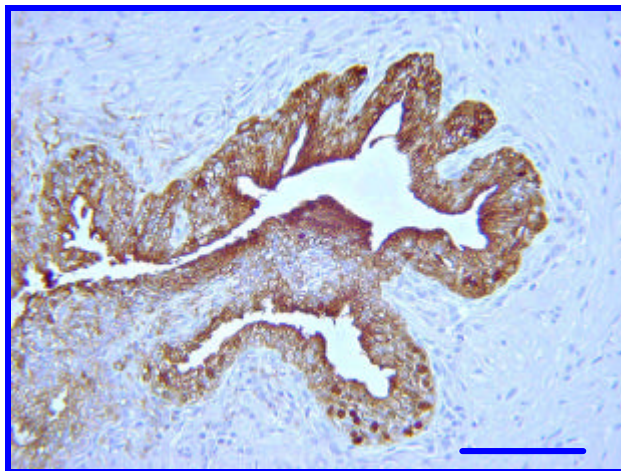
Target Antigen:	Prostate Specific Antigen (PSA)
Catalog or ID #:	IHC2052
Host and Isotype:	Rabbit IgG
Clone and Lot #:	
Purity and Method:	Affinity purified
Concentration and Quantity:	Prediluted
Storage Conditions:	2-4.0°C refrigerated
Species Reactivity:	Human. Reactivity with other species has not been confirmed.
IHC-Paraffin Fixation Tested:	10% neutral Buffered Formalin
IHC-Paraffin Titer:	N/A
IHC-Paraffin Pretreatment(s):	Heat Induced Epitope Retrieval (HIER): Recommend no HIER or TE Buffer, pH 9.0. Over staining can be achieved if Citrate Buffer, pH 6.0, or EDTA, pH 8.0 is used.
IHC-Paraffin Protocol:	IHC-Select, HRP-DAB (Brief Outline): Blocking Reagent for 5 min. Primary Antibody (or Negative Control Reagent) for 10 min. Biotinylated Secondary Antibody for 10 min. Streptavidin-HRP for 10 min. DAB for 10 min. Hematoxylin for 1 min.
Positive Tissue(s):	Prostatic benign hyperplasia or known prostate carcinoma.
Subcellular Location(s):	Cytoplasmic staining.
Negative Tissue(s):	Non-prostate normal tissue
Comments and References:	Staining is as expected since specific immunoreactivity was restricted to prostate carcinoma epithelial cells.



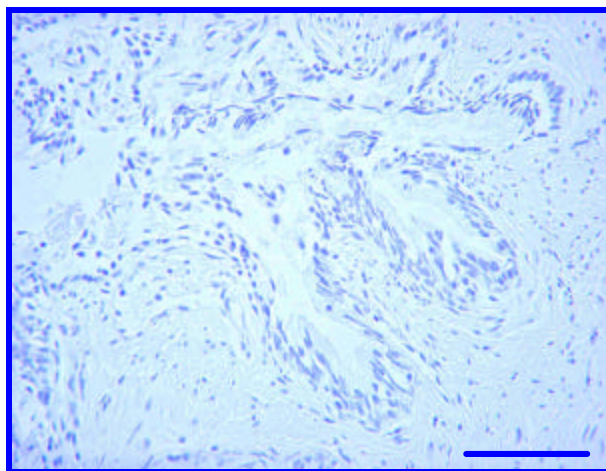
CHEMICON
INTERNATIONAL

IHC – Paraffin Staining Examples:

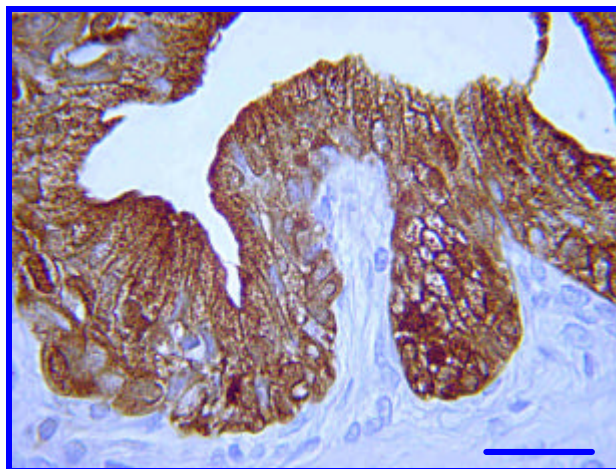
Pictures of Optimal Staining Without Epitope Retrieval: Human Prostate



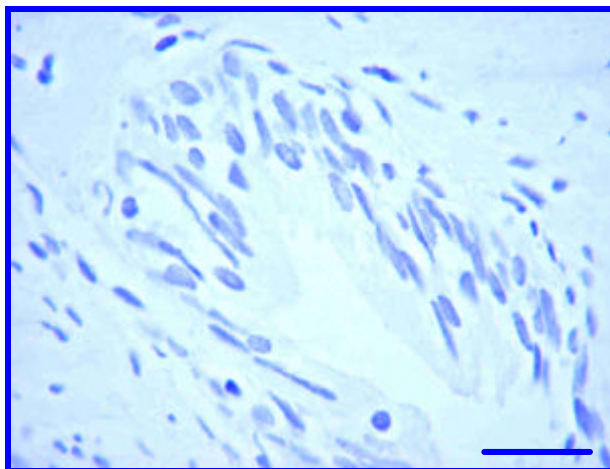
PSA (IHC2052) staining of Human Prostate Carcinoma. Tissue without Epitope retrieval. Prediluted polyclonal antibody, IHC-Select Detection with HRP-DAB. Cancer cells stain strongly (brown) with no diffusive background. Bar = 100 μ m.



Negative Control staining of Human Prostate Carcinoma. Tissue without Epitope retrieval. Negative Control Reagent, IHC-Select Detection with HRP-DAB. No background staining is detected. Bar = 100 μ m.



PSA (IHC2052) staining of Human Prostate Carcinoma. Tissue without Epitope retrieval. Prediluted polyclonal antibody, IHC-Select Detection with HRP-DAB. Cancer cells stain strongly (brown) with no diffusive background. Bar = 25 μ m.



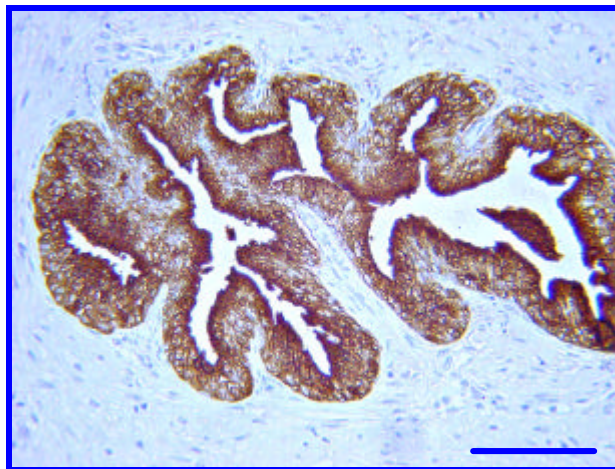
Negative Control staining of Human Prostate Carcinoma. Tissue without Epitope retrieval. Negative Control Reagent, IHC-Select Detection with HRP-DAB. No background staining is detected. Bar = 25 μ m.



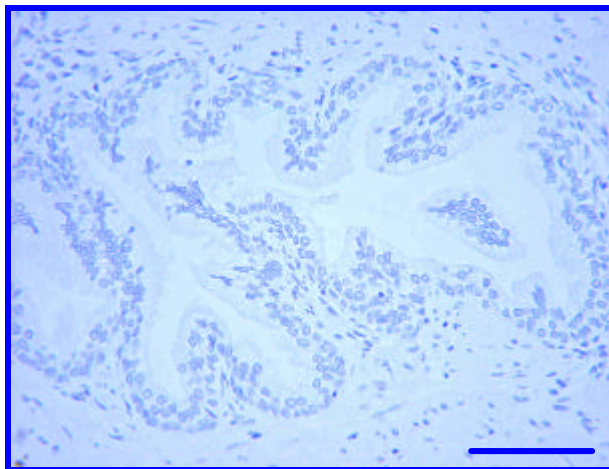
CHEMICON
INTERNATIONAL

IHC – Paraffin Staining Examples:

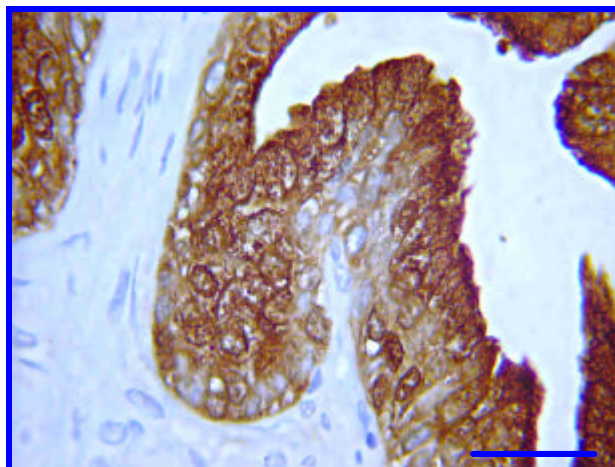
Pictures of Optimal Staining TE Buffer Epitope Retrieval: Human Prostate



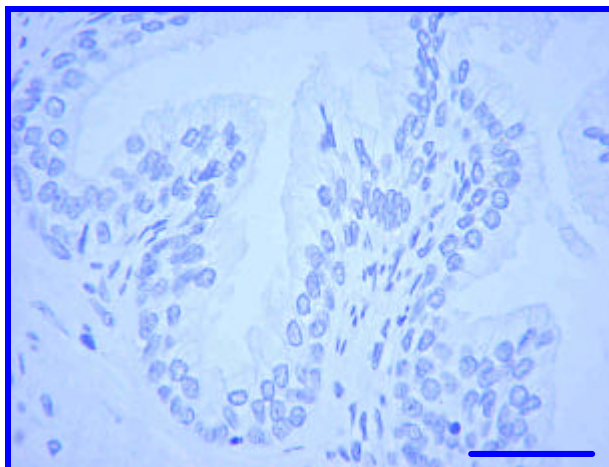
PSA (IHC2052) staining of Human Prostate Carcinoma. Tissue pretreated with TE Buffer, pH 9.0. Prediluted polyclonal antibody, IHC-Select Detection with HRP-DAB. Cancer cells stain strongly (brown) with no diffusive background. Bar = 100 μ m.



Negative Control staining of Human Prostate Carcinoma. Tissue pretreated with TE Buffer, pH 9.0. Negative Control Reagent, IHC-Select Detection with HRP-DAB. No background staining is detected. Bar = 100 μ m.



PSA (IHC2052) staining of Human Prostate Carcinoma. Tissue pretreated with TE Buffer, pH 9.0. Prediluted polyclonal antibody, IHC-Select Detection with HRP-DAB. Cancer cells stain strongly (brown) with no diffusive background. Bar = 100 μ m.



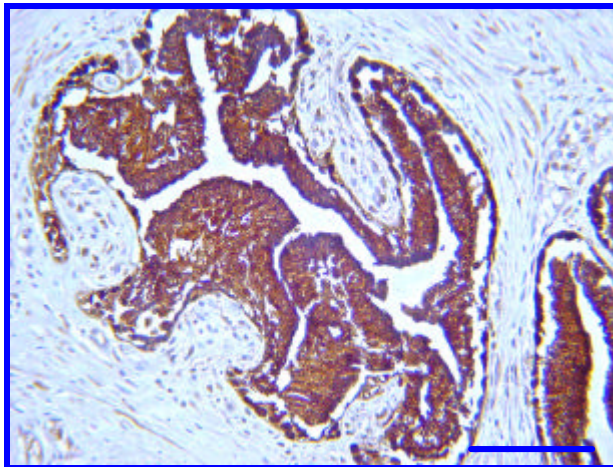
Negative Control staining of Human Prostate Carcinoma. Tissue pretreated with TE Buffer, pH 9.0. Negative Control Reagent, IHC-Select Detection with HRP-DAB. No background staining is detected. Bar = 100 μ m.



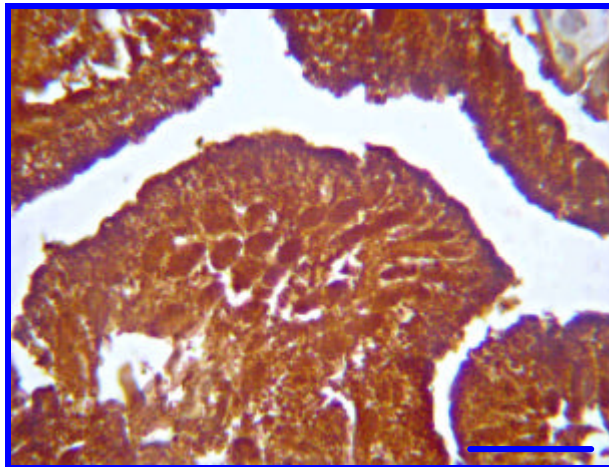
CHEMICON
INTERNATIONAL

IHC – Paraffin Staining Examples:

Pictures of Over Staining With Citrate Buffer Epitope Retrieval: Human Prostate

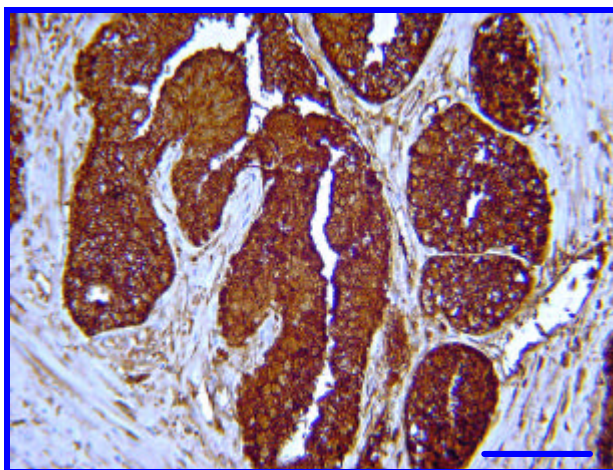


PSA (IHC2052) staining of Human Prostate Carcinoma. Tissue pretreated with Citrate Buffer, pH 6.0. Prediluted polyclonal antibody, IHC-Select Detection with HRP-DAB. Cancer cells stain very strongly (brown). Bar = 100µm.

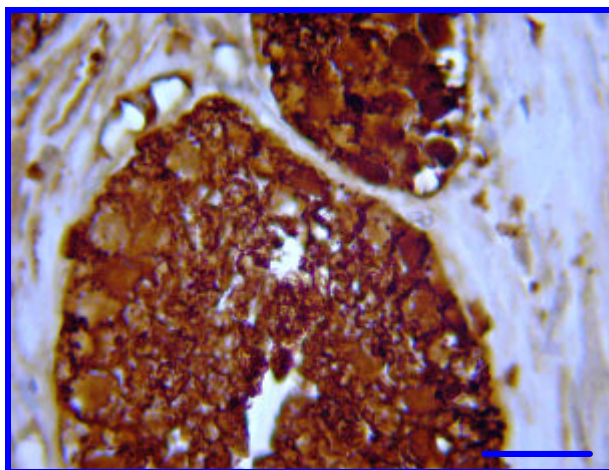


PSA (IHC2052) staining of Human Prostate Carcinoma. Tissue pretreated with Citrate Buffer, pH 6.0. Prediluted polyclonal antibody, IHC-Select Detection with HRP-DAB. Cancer cells stain very strongly (brown). Bar = 25µm.

Pictures of Over Staining With EDTA Epitope Retrieval: Human Prostate



PSA (IHC2052) staining of Human Prostate Carcinoma. Tissue pretreated with EDTA, pH 8.0. Prediluted polyclonal antibody, IHC-Select Detection with HRP-DAB. Cancer cells stain strongly (brown), with highly diffusive background. Bar = 100µm.



PSA (IHC2052) staining of Human Prostate Carcinoma. Tissue pretreated with EDTA, pH 8.0. Prediluted polyclonal antibody, IHC-Select Detection with HRP-DAB. Cancer cells stain strongly (brown), with highly diffusive background. Bar = 25µm.