

CT-2A-Luc Mouse Glioma Cell Line

Cancer Cell Line
Cat. # SCC195

Pack size: $\geq 1 \times 10^6$
viable cells/vial

FOR RESEARCH USE ONLY.
NOT FOR USE IN DIAGNOSTIC PROCEDURES.
NOT FOR HUMAN OR ANIMAL CONSUMPTION.
THIS PRODUCT CONTAINS GENETICALLY MODIFIED ORGANISMS.

Store in liquid nitrogen



Data Sheet

page 1 of 3

Background:

Glioblastomas are among the most aggressive forms of cancer, associated with low treatment efficacy and poor survival. Recurring glioblastomas are often resistant to first-line chemotherapies.¹ There is much interest in studying drug-resistant forms of glioblastomas in the effort to develop effective therapies.

The CT-2A-Luc cell line is derived from a sub-cutaneous, non-metastatic murine glioma (astrocytoma) and is stably transduced with a firefly luciferase-EGFP reporter. CT-2A-Luc cells are marked by high levels of complex gangliosides and low distribution of the anti-angiogenic ganglioside GM3, as well as deficiency in the tumor suppressor PTEN/TSC2, a characteristic present in up to 70% of human high-grade glioma cell lines.^{2,3} CT-2A tumors are wild-type for p53 and recapitulate several features of human high-grade glioma, including high mitotic index and cell density, nuclear polymorphism, hemorrhage, pseudopalisading necrosis, and microvascular proliferation.^{4,5} These attributes have contributed to use of the CT-2A-Luc cell line is a valuable model for therapeutic research on brain malignancies.

Source

The parental CT-2A cell line was generated from a malignant astrocytoma formed via implantation of the carcinogen 20-methylcholanthrene in the cerebrum of a C57BL/6J mouse.⁶ The tumor was maintained through serial intracranial transplants prior to cell line isolation. The CT-2A-Luc luciferase cell line was clonally derived from CT-2A cells transduced with a lentiviral vector harboring a firefly luciferase (Fluc)-IRES-GFP cassette under control of the CMV promoter; cells were subsequently sorted for EGFP expression.⁷

Quality Control Testing

- Each vial contains $\geq 1 \times 10^6$ viable cells.
- Cells are tested negative for infectious diseases by a Mouse Essential CLEAR panel by Charles River Animal Diagnostic Services.
- Cells are verified to be of mouse origin and negative for inter-species contamination from rat, chinese hamster, Golden Syrian hamster, human and non-human primate (NHP) as assessed by a Contamination Clear panel by Charles River Animal Diagnostic Services.
- Cells are negative for mycoplasma contamination.

Storage and Handling

CT-2A-Luc Mouse Glioma Cells should be stored in liquid nitrogen. The cells can be cultured for at least 10 passages after initial thawing without significantly affecting the cell marker expression and functionality.

Representative Data

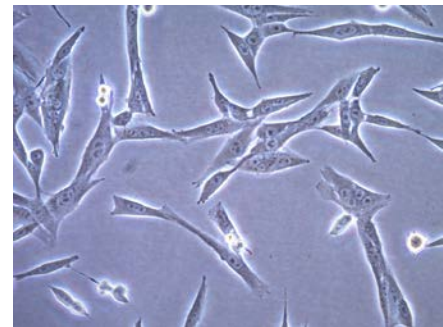


Figure 1. CT-2A-Luc cells one day after thawing in a T75 flask.

References

1. Weller M, Cloughesy T, Perry JR, and Wick W (2013) *Neuro Oncol* 15(1): 4-27.
2. Seyfried TN, Mukherjee P (2010) *J Oncol* 2010:961243 doi:10.1155/2010/961243.
3. Cotterchio M, Seyfried TN (1994) *J Lipid Res* 35(1): 10-14.
4. Binello E, Qadeer ZA, Kothari HP, Emdad L, Germano IM (2012) *J Cancer* 3: 166-174.
5. Martinez-Murillo R, Martinez A (2007) *Histol Histopathol* 22(12): 1309-1326.
6. Zimmerman HM and Arnold H. (1941) *Cancer Res* 1(12): 919-938.
7. Huysentruyt LC, Mukherjee P, Banerjee D, Shelton LM, Seyfried TN (2008) *Int J Cancer* 123(1): 73-84.

Please visit www.millipore.com for additional product information and references.

Submit your published journal article and credit toward future purchases. Visit www.millipore.com/publicationrewards to learn more!

Protocols

Thawing Cells

1. Do not thaw the cells until the recommended medium is on hand. Cells can grow on normal tissue cultureware surfaces without any additional coating.
CT-2A-Luc Expansion Medium: Cells are thawed and expanded in DMEM High Glucose (Sigma Cat. No. D6429), 10% FBS (Cat. No. ES-009-B), and 1X Penicillin-Streptomycin Solution (Cat. No. TMS-AB2-C) (optional).
2. Remove the vial of frozen CT-2A-Luc cells from liquid nitrogen and incubate in a 37°C water bath. Closely monitor until the cells are completely thawed. Maximum cell viability is dependent on the rapid and complete thawing of frozen cells.
IMPORTANT: Do not vortex the cells.
3. As soon as the cells are completely thawed, disinfect the outside of the vial with 70% ethanol. Proceed immediately to the next step.
4. In a laminar flow hood, use a 1 or 2 mL pipette to transfer the cells to a sterile 15 mL conical tube. Be careful not to introduce any bubbles during the transfer process.
5. Using a 10 mL pipette, slowly add dropwise 9 mL of CT-2A Expansion Medium (Step 1 above) to the 15 mL conical tube.
IMPORTANT: Do not add the entire volume of media all at once to the cells. This may result in decreased cell viability due to osmotic shock.
6. Gently mix the cell suspension by slowly pipetting up and down twice. Be careful not to introduce any bubbles.
IMPORTANT: Do not vortex the cells.
7. Centrifuge the tube at 300 x g for 2-3 minutes to pellet the cells.
8. Decant as much of the supernatant as possible. Steps 5-8 are necessary to remove residual cryopreservative (DMSO).
9. Resuspend the cells in 15 mL of CT-2A Expansion Medium.
10. Transfer the cell mixture to a T75 tissue culture flask.
11. Incubate the cells at 37°C in a humidified incubator with 5% CO₂.

Subculturing Cells

1. Carefully remove the medium from the T75 tissue culture flask containing the confluent layer of CT-2A-Luc cells.
2. Rinse the flask with 10 mL 1X PBS. Aspirate after the rinse.
3. Apply 5-7 mL of Accutase or trypsin-EDTA solution and incubate in a 37°C incubator for 3-5 minutes.
4. Inspect the flask and ensure the complete detachment of cells by gently tapping the side of the flask with the palm of your hand.
5. Add 5-7 mL of CT-2A Expansion Medium to the plate.
6. Gently rotate the flask to mix the cell suspension. Transfer the dissociated cells to a 15 mL conical tube.
7. Centrifuge the tube at 300 x g for 3-5 minutes to pellet the cells.
8. Discard the supernatant, then loosen the cell pellet by tapping the tip of the tube with a finger.
9. Apply 2-5 mL of CT-2A Expansion Medium to the conical tube and resuspend the cells thoroughly.
IMPORTANT: Do not vortex the cells.
10. Count the number of cells using a hemocytometer.
11. Plate the cells to the desired density. Typical split ratio is 1:6.

Cryopreservation of Cells

CT-2A-Luc mouse glioma cell line may be frozen in the expansion medium plus 10% DMSO using a Nalgene slow freeze Mr. Frosty container.

ACADEMIC USE AGREEMENT
(subject to local law)

THIS PRODUCT MAY ONLY BE USED BY INDIVIDUALS EMPLOYED BY AN ACADEMIC INSTITUTION AND IS INTENDED SOLELY TO BE USED FOR ACADEMIC RESEARCH, WHICH IS FURTHER DEFINED BELOW. BY OPENING THIS PRODUCT, YOU (“PURCHASER”) HEREBY REPRESENT THAT YOU HAVE THE RIGHT AND AUTHORITY TO LEGALLY BIND YOURSELF AND/OR YOUR EMPLOYER INSTITUTION, AS APPLICABLE, AND CONSENT TO BE LEGALLY BOUND BY THE TERMS OF THIS ACADEMIC USE AGREEMENT. IF YOU DO NOT AGREE TO COMPLY WITH THESE TERMS, YOU MAY NOT OPEN OR USE THE PRODUCT AND YOU MUST CALL MILLIPORESIGMA (“SELLER”) CUSTOMER SERVICE (1-800-645-5476) TO ARRANGE TO RETURN THE PRODUCT FOR A REFUND.

“Product” means CT-2A-Luc Mouse Glioma Cell Line (SCC195)

“Academic Research” means any internal *in vitro* research use by individuals employed by an academic institution. Academic Research specifically excludes the following uses of whatever kind or nature:

- Re-engineering or copying the Product
- Making derivatives, modifications, or functional equivalents of the Product
- Obtaining patents or other intellectual property rights claiming use of the Product
- Using the Product in the development, testing, or manufacture of a Commercial Product
- Using the Product as a component of a Commercial Product
- Reselling or licensing the Product
- Using the Product in clinical or therapeutic applications including producing materials for clinical trials
- Administering the Product to humans
- Using the Product in collaboration with a commercial or non-academic entity

“Commercial Product” means any product intended for: (i) current or future sale; (ii) use in a fee-for-service; or (iii) any diagnostic, clinical, or therapeutic use.

Access to the Product is limited solely to those officers, employees, and students of PURCHASER’s academic institution who need access to the Product to perform Academic Research. PURCHASER shall comply with all applicable laws in its use and handling of the Product and shall keep it under reasonably safe and secure conditions to prevent unauthorized use or access.

These use restrictions will remain in effect for as long as PURCHASER possesses the Product.

COMMERCIAL OR NON-ACADEMIC ENTITIES INTERESTED IN PURCHASING OR USING THE PRODUCT MUST CONTACT licensing@emdmillipore.com AND AGREE TO SEPARATE TERMS OF USE PRIOR TO USE OR PURCHASE.

GMO

This product contains genetically modified organisms.
Este producto contiene organismos genéticamente modificados.
Questo prodotto contiene degli organismi geneticamente modificati.
Dieses Produkt enthält genetisch modifizierte Organismen.
Ce produit contient des organismes génétiquement modifiés.
Dit product bevat genetisch gewijzigde organismen.
Tämä tuote sisältää geneettisesti muutettuja organismeja.
Denna produkt innehåller genetiskt ändrade organismer.

■ antibodies ■ Multiplex products ■ biotools ■ cell culture ■ enzymes ■ kits ■ proteins/peptides ■ siRNA/cDNA products

Please visit www.millipore.com for additional product information, test data and references

EMD Millipore Corporation, 28820 Single Oak Drive, Temecula, CA 92590, USA 1-800-437-7500

Technical Support: T: 1-800-MILLIPORE (1-800-645-5476) • F: 1-800-437-7502

FOR RESEARCH USE ONLY. Not for use in diagnostic procedures. Not for human or animal consumption. Purchase of this Product does not include any right to resell or transfer, either as a stand-alone product or as a component of another product. Any use of this Product for purposes other than research is strictly prohibited.

EMD Millipore®, the M mark, Upstate®, Chemicon®, Linco® and all other registered trademarks, unless specifically identified above in the text as belonging to a third party, are owned by Merck KGaA, Darmstadt, Germany. Copyright ©2008-2018 Merck KGaA, Darmstadt, Germany. All rights reserved.



We Buy 100% Certified
Renewable Energy