

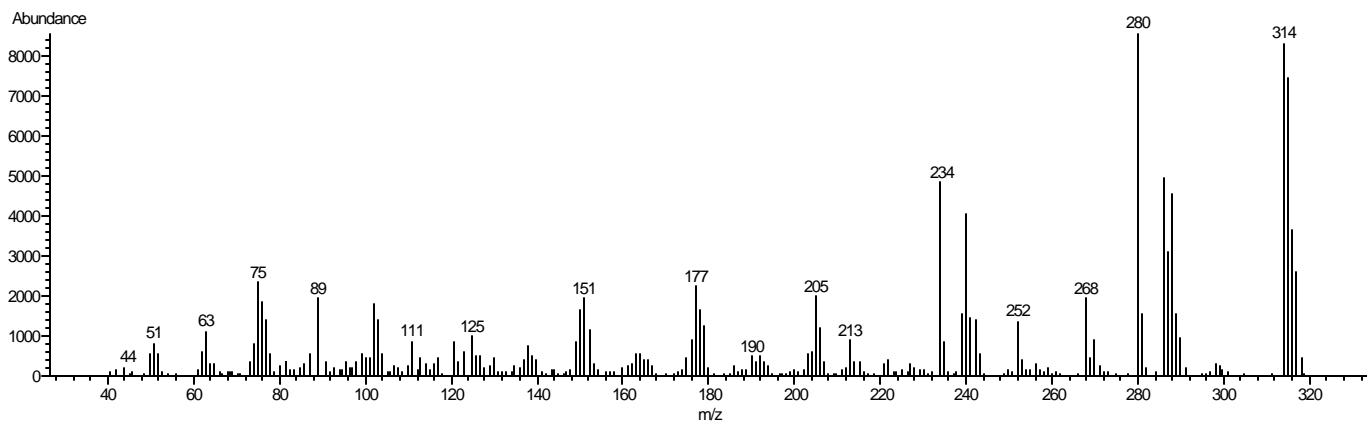
Product Information

CLONAZEPAM

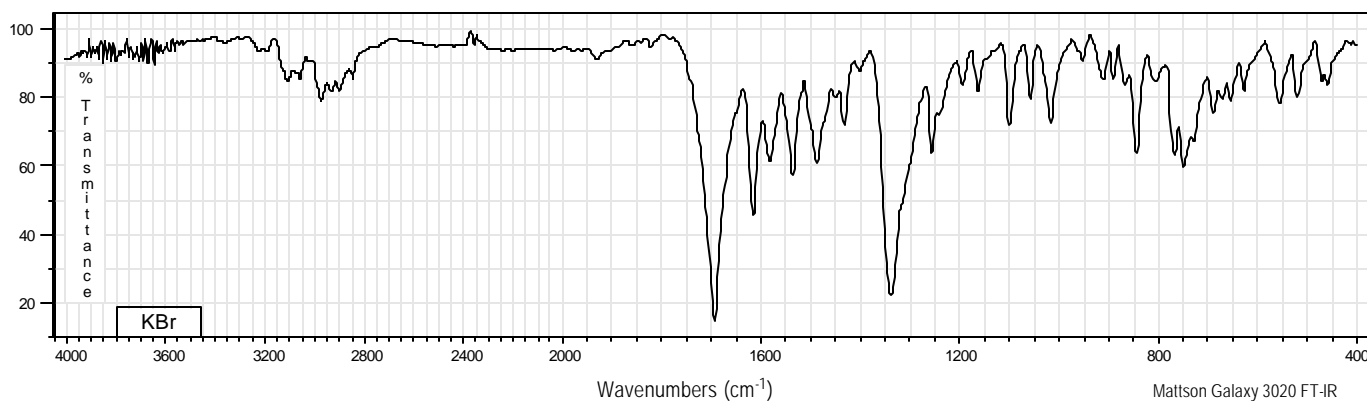
Methanol Solution

Product Number	C4404	Synonyms	5-(o-Chlorophenyl)-1,3-dihydro-7-nitro-2H-1,4-benzodiazepin-2-one
Lot Number	101K8813	Stability	If stored at 2-8°C in an air tight container, protected from light, decomposition of the product is less than 1% in 12 months. After opening, concentration may change due to loss of solvent.
CAS Number	[1622-61-3]	Expiration Date	April 2004
Concentration	1.04 mg Clonazepam/mL GC grade methanol (conc. verified by UV)	Storage	2-8°C; After opening, transfer contents to small vial provided for your convenience.
Molecular Formula	C ₁₅ H ₁₀ ClN ₃ O ₃		
Molecular Weight	315.7		
DEA Class	Exempt preparation of Class IV		

70 eV Electron Ionization Mass Spectrum

Hewlett-Packard 5890 Series II Gas Chromatograph
Hewlett-Packard 5971 Mass Selective Detector
Hewlett-Packard G1034C MS ChemStation (HP-DOS series)

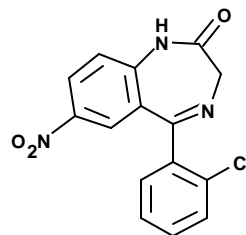
FT-IR



Mattson Galaxy 3020 FT-IR

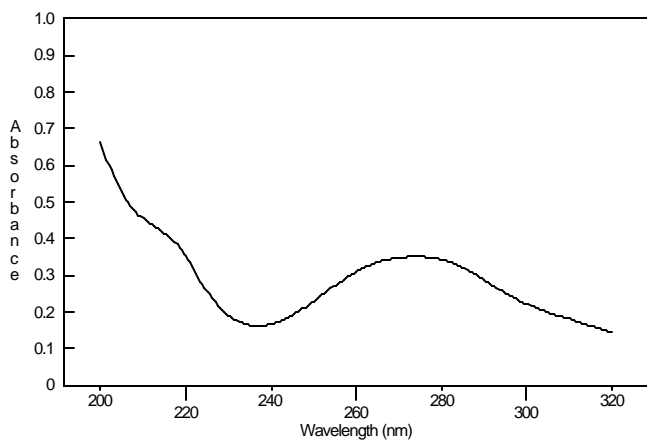
CLONAZEPAM

Methanol Solution
Product Number C4404
Lot Number 101K8813



Ultraviolet Spectrum

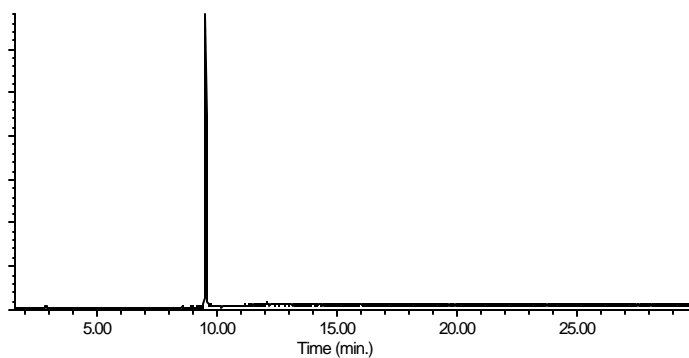
Peak 273.5 nm
Absorbance 0.350
Solvent 0.2 N H₂SO₄
Dilution 1 : 199 (v/v)



Bio-Tek Uvikon XL

Capillary Gas Chromatography

Column Supelco SPB-1 (Cat. No. 2-4162)
I.D. 0.20 mm **Length** 15 m **Film Thickness** 0.20 μm
Oven Temperature 150°C (2 min.), then 15°/min. to 300°C, hold 18 min.
Injector Temperature 250°C, Split
Detector Hewlett-Packard 5971
Mass Selective Detector (70 eV, 40-500 m/z)



Hewlett-Packard 5890

C 4404/101K8813/11/07/01

This product is not for *in vitro* diagnostic procedures. For R&D use only. Not for drug, household or other uses.

Sigma brand products are sold through Sigma-Aldrich, Inc.

Sigma-Aldrich, Inc. warrants that its products conform to the information contained in this and other Sigma-Aldrich publications.

Purchaser must determine the suitability of the product(s) for their particular use. Additional terms and conditions may apply.

Please see reverse side of the invoice or packing slip.