



3050 Spruce Street  
Saint Louis, Missouri 63103 USA  
Telephone 800-325-5832 • (314) 771-5765  
Fax (314) 286-7828  
email: techserv@sial.com  
sigma-aldrich.com

## Product Information

### CANNABIDIOL

Methanol Solution

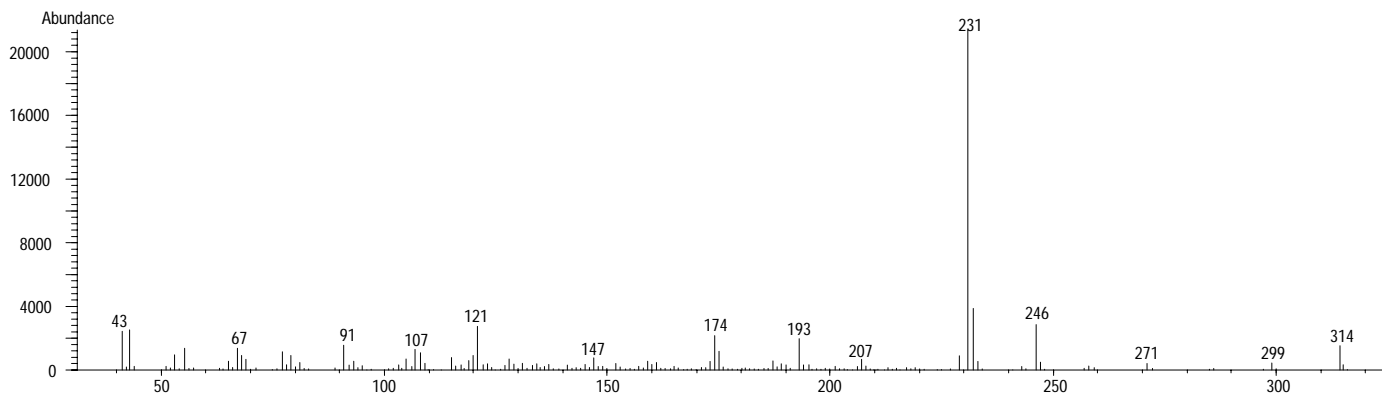
**Product Number** C 6395  
**Lot Number** 71K88051  
**CAS Number** [13956-29-1]  
**Concentration** 0.99 mg Cannabidiol/mL GC grade methanol (conc. verified by UV)  
**Molecular Formula** C<sub>21</sub>H<sub>30</sub>O<sub>2</sub>  
**Molecular Weight** 314.5  
**DEA Class** Exempt preparation of Class I

**Synonyms** 2-[3-Methyl-6-(1-methylethenyl)-2-cyclohexen-1-yl]-5-pentyl-1,3-benzenediol; CBD

**Stability** If stored at 2-8°C in an air tight container, protected from light, decomposition of the product is less than 1% in 48 months. After opening, concentration may change due to loss of solvent.

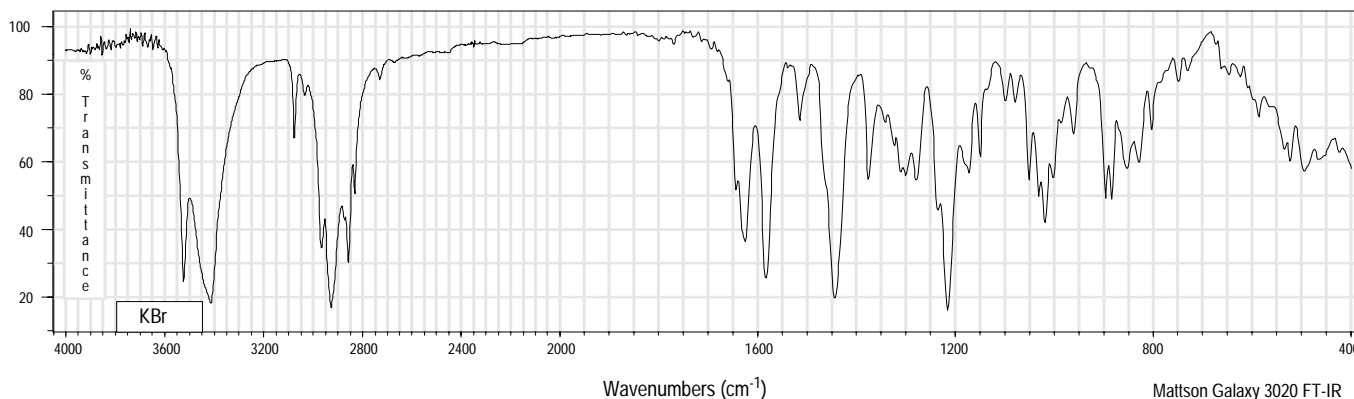
**Expiration Date** December 2008  
**Storage** 2-8°C; After opening, transfer contents to small vial provided for your convenience.

70 eV Electron Ionization Mass Spectrum



Hewlett-Packard 5890 Series II Gas Chromatograph  
Hewlett-Packard 5971 Mass Selective Detector  
Hewlett-Packard G1034C MS ChemStation (HP-DOS series)

### FT-IR



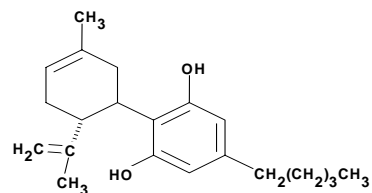
Mattson Galaxy 3020 FT-IR

# CANNABIDIOL

Methanol Solution

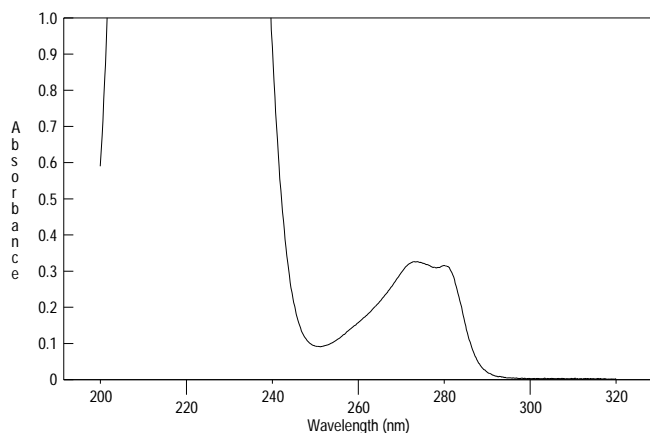
Product Number C 6395

Lot Number 71K88051



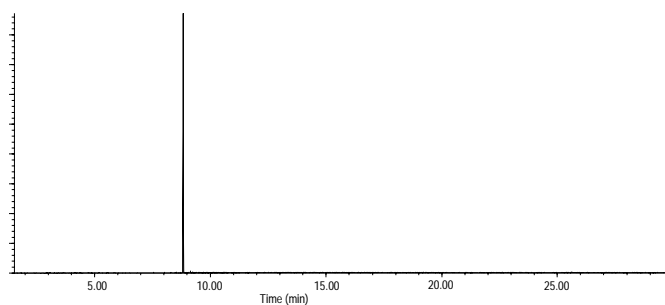
## Ultraviolet Spectrum

<b>Peak</b>	273.8 nm
<b>Absorbance</b>	0.326
<b>Solvent</b>	Methanol
<b>Dilution</b>	1 : 9 (v/v)



## Capillary Gas Chromatography

**Column** Supelco SPB-1 (Cat. No. 2-4162)  
**I.D.** 0.20 mm **Length** 15 m **Film Thickness** 0.20  $\mu$ m  
**Oven Temperature** 150°C (2 min.), then 15°/min. to 300°C, hold 18 min.  
**Injector Temperature** 250°C, Split  
**Detector** Hewlett-Packard 5971  
Mass Selective Detector (70 eV, 40-500 m/z)



Hewlett-Packard 5890

C 6395/71K88051, 11/9/04

This product is not for *in vitro* diagnostic procedures. For R&D use only. Not for drug, household or other uses.  
Sigma brand products are sold through Sigma-Aldrich, Inc.  
Sigma-Aldrich, Inc. warrants that its products conform to the information contained in this and other Sigma-Aldrich publications.  
Purchaser must determine the suitability of the product(s) for their particular use. Additional terms and conditions may apply.  
Please see reverse side of the invoice or packing slip.