

**RABBIT ANTI- RAT GPCR G2A
POLYCLONAL ANTIBODY**

CATALOG NUMBER: AB9860

LOT NUMBER:

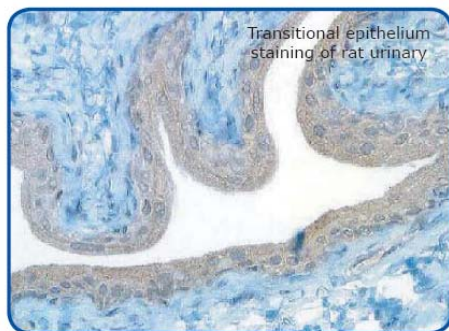
QUANTITY: 25 µg

CONCENTRATION: 100 µg/mL

SPECIFICITY: Recognizes rat GPCR G2A (G protein-coupled receptor G2A).

IMMUNOGEN: Highly purified peptide from C-terminus of rat G2A.

APPLICATIONS: Immunohistochemistry on formalin fixed, paraffin embedded rat urinary tissue.



Optimal working dilutions must be determined by the end user.

SPECIES REACTIVITIES: Rat. Reactivity with other species has not been determined.

FORMAT: Affinity purified immunoglobulin.

PRESENTATION: Liquid in 0.1M Glycine / 0.2M Tris buffer solution pH7.8 containing 0.02% sodium azide.

STORAGE/HANDLING: Maintain lyophilized material at -20°C for up to 12 months after date of receipt. After reconstitution maintain at -20°C in undiluted aliquots for up to 6 months. Avoid repeated freeze/thaw cycles. For maximum recovery of product, centrifuge the original vial after thawing and prior to removing the cap.

Unless otherwise stated in our catalog or other company documentation accompanying the product(s), our products are intended for research use only and are not to be used for any other purpose, which includes but is not limited to, unauthorized commercial uses, in vitro diagnostic uses, ex vivo or in vivo therapeutic uses or any type of consumption or application to humans or animals.

© 2006: CHEMICON International, Inc. - By CHEMICON International, Inc. All rights reserved. No part of these works may be reproduced in any form without permissions in writing.

USA & Canada • Phone: +1(800) 437-7500 • Fax: +1 (951) 676-9209 • Europe +44 (0) 23 8026 2233
Australia +61 3 9839 2000 • Germany +49-6192-207300 • ISO Registered worldwide
www.chemicon.com • custserv@chemicon.com • techserv@chemicon.com