



**SIGMA-ALDRICH**

3050 Spruce Street  
Saint Louis, Missouri 63103 USA  
Telephone 800-325-5832 • (314) 771-5765  
Fax (314) 286-7828  
email: techserv@sial.com  
sigma-aldrich.com

## Product Information

### IBUPROFEN

Methanol Solution

**Product Number** I 0386  
**Lot Number** 91K8803  
**CAS Number** [15687-27-1]  
**Concentration** 1.01 mg Ibuprofen/mL GC grade methanol (conc. verified by UV)  
**Molecular Formula** C<sub>13</sub>H<sub>18</sub>O<sub>2</sub>  
**Molecular Weight** 206.3  
**DEA Class** Formulation of a non controlled substance

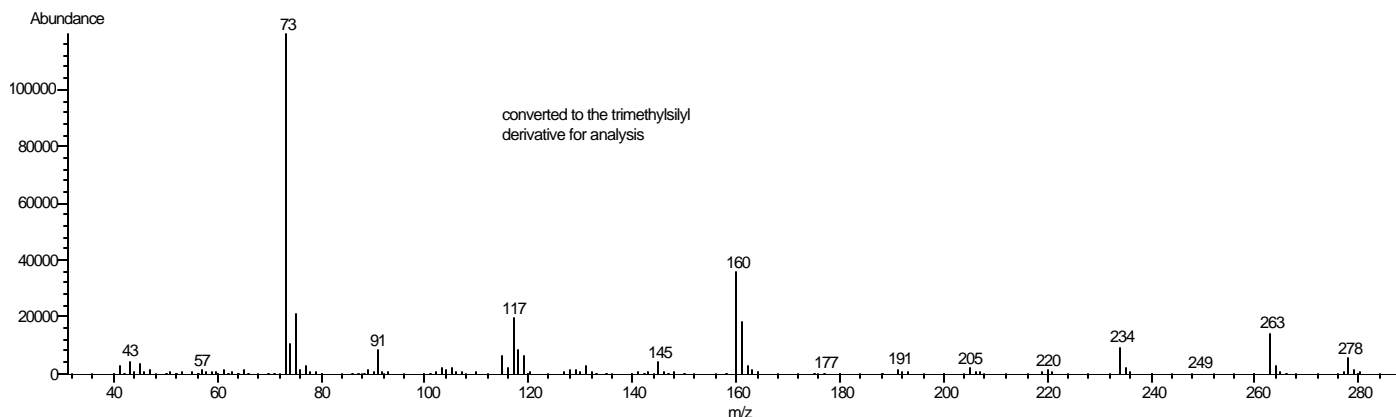
**Synonyms**  $\alpha$ -Methyl-4-(2-methylpropyl)benzeneacetic acid, *p*-Isobutyhydratropic acid, 2-(4-Isobutylphenyl)-propionic acid

**Stability** If stored at 2-8°C in an air tight container, protected from light, decomposition of the product is less than 1% in 48 months. After opening, concentration may change due to loss of solvent.

**Expiration Date** June 2006

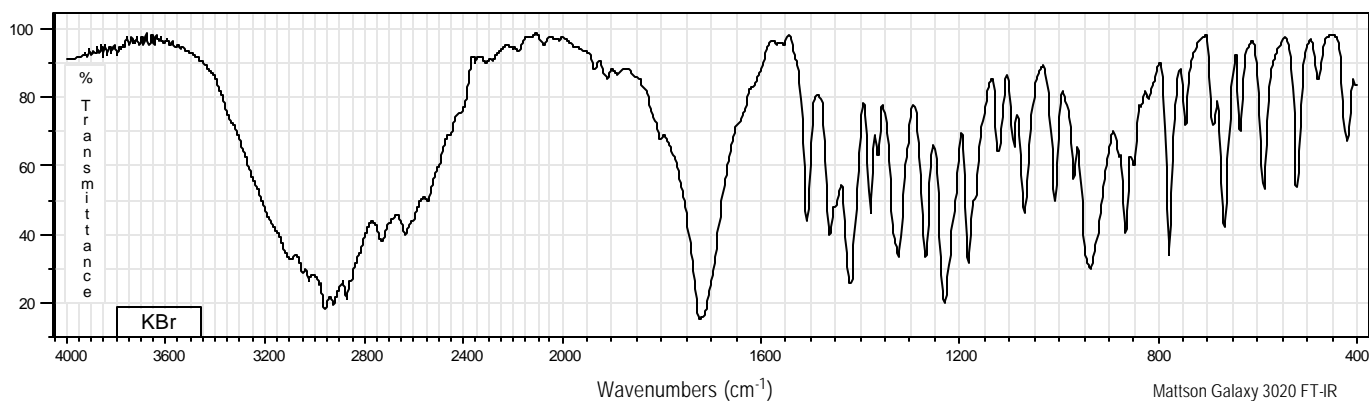
**Storage** 2-8°C; After opening, transfer contents to small vial provided for your convenience.

70 eV Electron Ionization Mass Spectrum



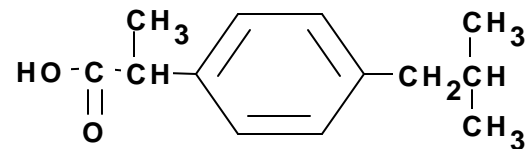
Hewlett-Packard 5890 Series II Gas Chromatograph  
Hewlett-Packard 5971 Mass Selective Detector  
Hewlett-Packard G1034C MS ChemStation (HP-DOS series)

FT-IR



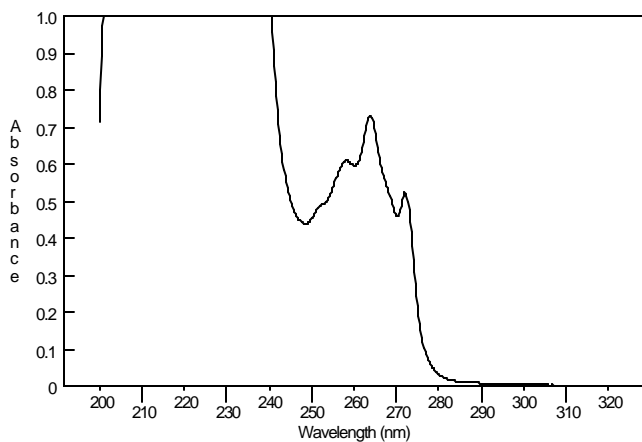
# IBUPROFEN

Methanol Solution  
Product Number I 0386  
Lot Number 91K8803



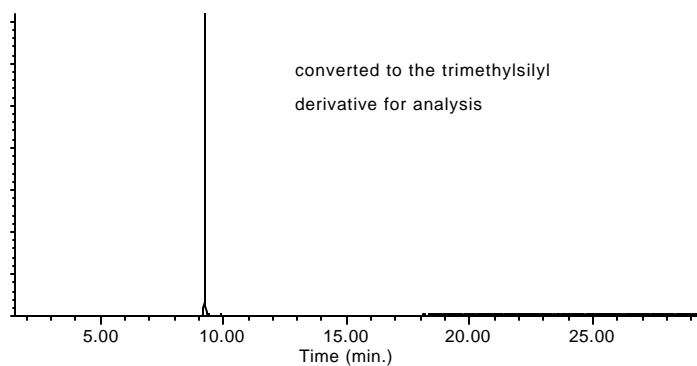
## Ultraviolet Spectrum

|                   |             |
|-------------------|-------------|
| <b>Peak</b>       | 263.8 nm    |
| <b>Absorbance</b> | 0.731       |
| <b>Solvent</b>    | methanol    |
| <b>Dilution</b>   | 1 : 1 (v/v) |



## Capillary Gas Chromatography

**Column** Supelco SPB-1 (Cat. No. 2-4162)  
**I.D.** 0.20 mm **Length** 15 m **Film Thickness** 0.20  $\mu$ m  
**Oven Temperature** 50°C (2 min.), then 15°/min. to 300°C, hold 11 min.  
**Injector Temperature** 250°C, Split  
**Detector** Hewlett-Packard 5971  
Mass Selective Detector (70 eV, 40-500 m/z)



I 0386/91K8803/11/06/01

This product is not for *in vitro* diagnostic procedures. For R&D use only. Not for drug, household or other uses.

Sigma brand products are sold through Sigma-Aldrich, Inc.

Sigma-Aldrich, Inc. warrants that its products conform to the information contained in this and other Sigma-Aldrich publications.

Purchaser must determine the suitability of the product(s) for their particular use. Additional terms and conditions may apply.

Please see reverse side of the invoice or packing slip.