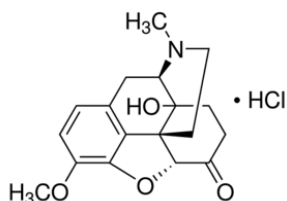


## Product Information

**Oxycodone hydrochloride solution**  
**1.0 mg/mL±5% in methanol**  
**analytical standard for drug analysis**

Catalog Number **O2628**  
Lot Number SLBN7071V  
Storage Temperature 2–8 °C

CAS RN 124-90-3  
Synonyms: 4,5-Epoxy-14-hydroxy-3-methoxy-17-methylmorphinan-6-one hydrochloride;  
Dihydrohydroxycodone hydrochloride



### Product Description

Molecular Formula:  $C_{18}H_{21}NO_4 \cdot HCl$   
Molecular Weight: 351.82

DEA Class: Exempt preparation of Class II

Concentration: 1.12 mg of oxycodone hydrochloride (equivalent to 1.00 mg of free base)/mL of GC grade methanol, concentration verified by UV.

Expiration Date: September 2018

### Precautions and Disclaimer

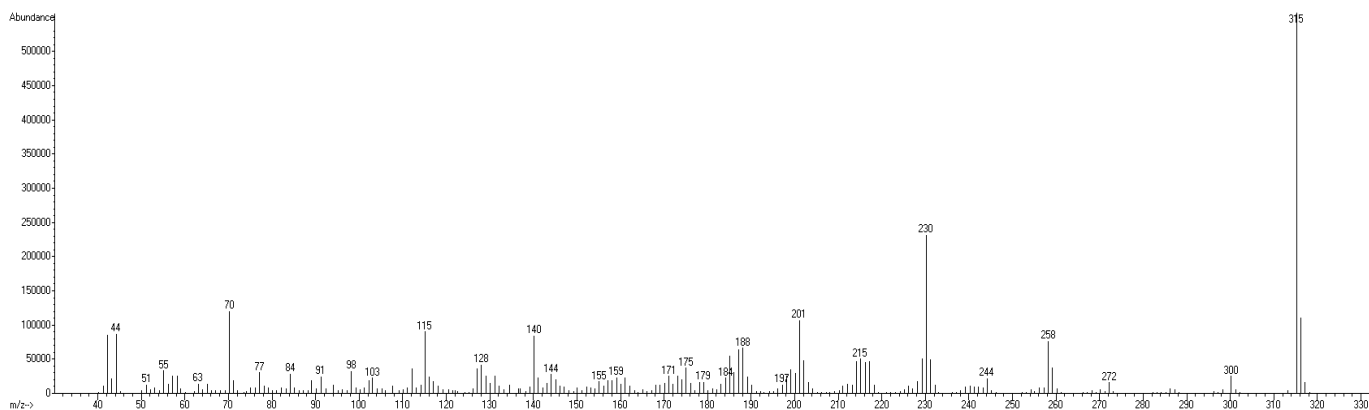
This product is for R&D use only, not for drug, household, or other uses. Please consult the Safety Data Sheet for information regarding hazards and safe handling practices.

### Storage/Stability

Store the product at 2–8 °C. If stored at 2–8 °C in an airtight container, protected from light, decomposition of the product is less than 1% in 48 months. After opening, concentration may change due to loss of solvent.

CMW,MAM 10/15-1

### 70 eV Electron Ionization Mass Spectrum



Hewlett-Packard 6890 Series II Gas Chromatograph  
Hewlett-Packard 5973 Mass Selective Detector  
Hewlett-Packard G1701DA MS ChemStation (HP-DOS series)

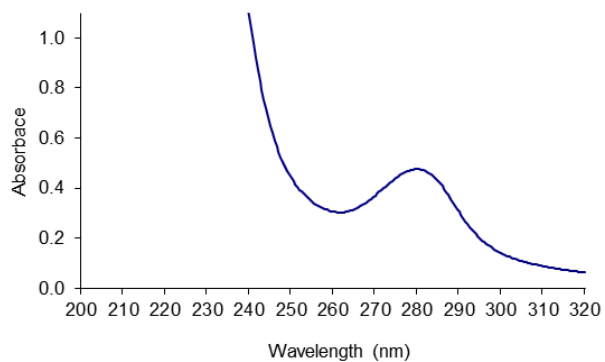
### FT-IR



Nicolet 380 FT-IR with Thermo Smart Orbit attachment

### Ultraviolet Spectrum

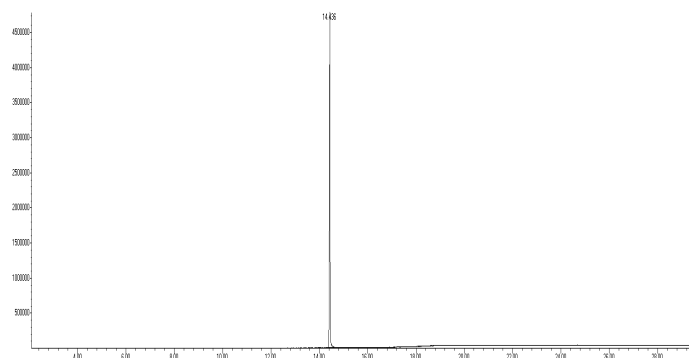
<b>Peak</b>	280.0 nm
<b>Absorbance</b>	0.4755
<b>Solvent</b>	0.2 N H <sub>2</sub> SO <sub>4</sub>
<b>Dilution</b>	1:9 (v/v)



Beckman-Coulter DU 800

### Capillary Gas Chromatography

**Column** Supelco SPB-1 (Catalog Number 24162)  
**I.D.** 0.20 mm **Length** 15 m **Film Thickness** 0.20  $\mu$ m  
**Oven Temperature** 50 °C (2 minutes), then  
15 °C/minute to 300 °C, hold 11 minutes  
**Injector Temperature** 250 °C, Split  
**Detector** Hewlett-Packard 5973  
Mass Selective Detector (70 eV, 40-500 m/z)



Hewlett-Packard 6890