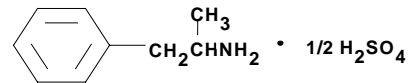


Product Information

DL-AMPHETAMINE SULFATE

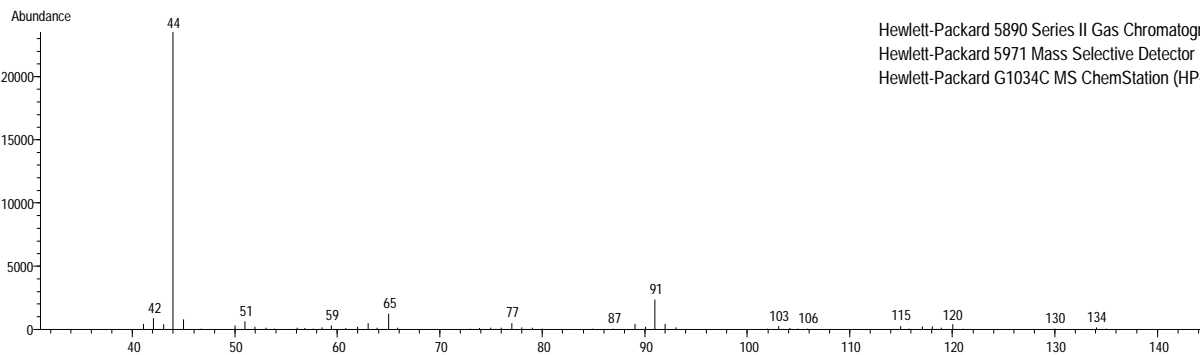
Methanol Solution



Product Number	A 2262
Lot Number	106H94251
CAS Number	[60-13-9]
Concentration	1.36 mg Amphetamine Sulfate (equivalent to 1.00 mg free base)/mL GC grade methanol (conc. verified by UV)
Molecular Formula	(C ₉ H ₁₃ N) ₂ • H ₂ SO ₄
Molecular Weight	368.5
DEA Class	Exempt preparation of Class II

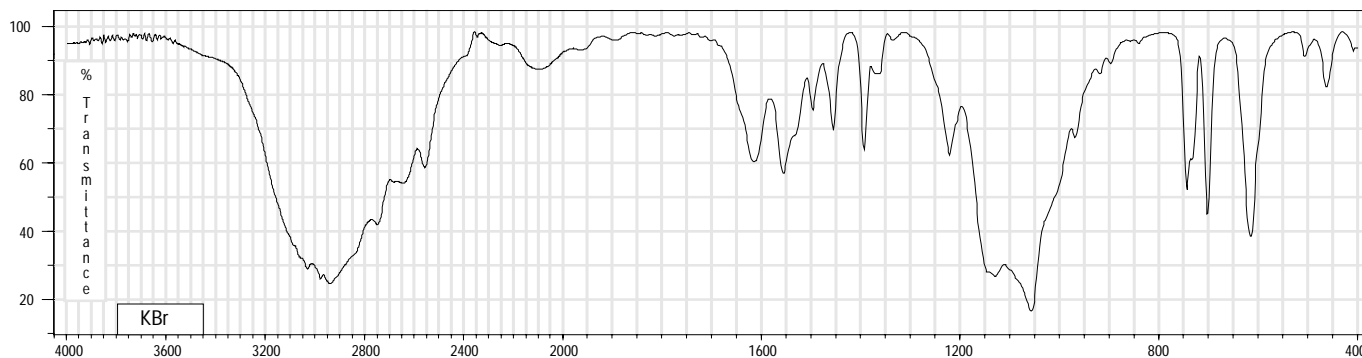
Synonyms	(±)α-Methylphenethylamine Sulphate
Stability	If stored at 2-8°C in an air tight container, protected from light, decomposition of the product is less than 1% in 48 months. After opening, concentration may change due to loss of solvent.
Expiration Date	June 2005
Storage	2-8°C; After opening, transfer contents to small vial provided for your convenience.

70 eV Electron Ionization Mass Spectrum



Hewlett-Packard 5890 Series II Gas Chromatograph
Hewlett-Packard 5971 Mass Selective Detector
Hewlett-Packard G1034C MS ChemStation (HP-DOS series)

FT-IR

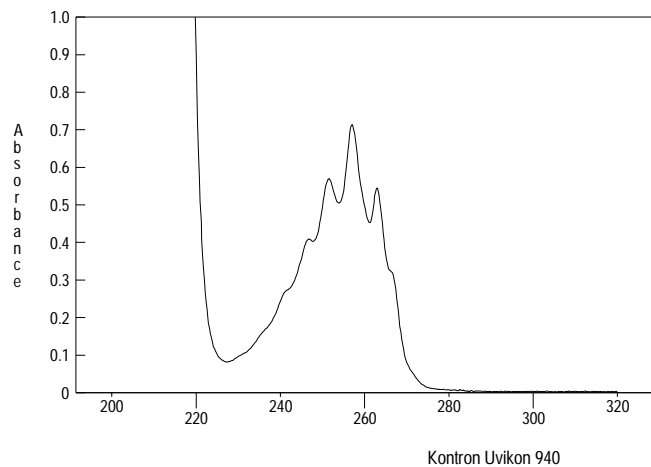


Wavenumbers (cm⁻¹)

Mattson Galaxy 3020 FT-IR

Ultraviolet Spectrum

Peak 257.0 nm
Absorbance 0.714
Solvent 0.2 N H₂SO₄
Dilution 1 : 1 (v/v)



Capillary Gas Chromatography

Column Supelco SPB-1 (Cat. No. 2-4162)
I.D. 0.20 mm **Length** 15 m **Film Thickness** 0.20 μm
Oven Temperature 50°C (2 min.), then 15°/min to 300°C, hold 11 min.
Injector Temperature 250°C, Split
Detector Hewlett-Packard 5971
Mass Selective Detector (70 eV, 40-500 m/z)

