



Packaged Water for Injection (WFI) - 59910C

Liquid Solutions MyWay

59910C (WFI) is part of Liquid Solutions MyWay – a portfolio of high-quality sterile filtered liquids in prefilled single-use bags that are in stock and ready-to-ship.

- Manufactured in an ISO 9001:2015 certified facility
- A 12-month shelf life from the date of production (with a target of 24 months)
- Manufactured using Emprove® raw materials (complying with Ph. Eur. and most with USP)
- Intended for bioprocessing and further manufacturing uses

Formulation 59910C - Raw Materials

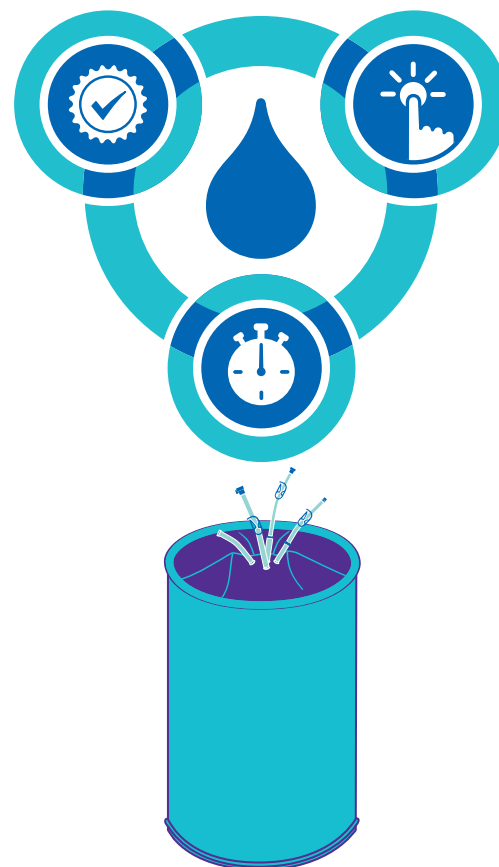
CAS No.	Description	Amount (per L)
7732-18-5	WATER FOR INJECTION (USP/EP)	100%

Outer packaging

The 50 L and 200 L bags will be shipped in a plastic drum.

Ship testing (ISTA)

To safeguard delivery, all shipping containers were ISTA ship tested using a filled bag in an appropriate outer container. The 50 L and 200 L 3D bags were tested in accordance with ISTA 3E (for palletized loads).



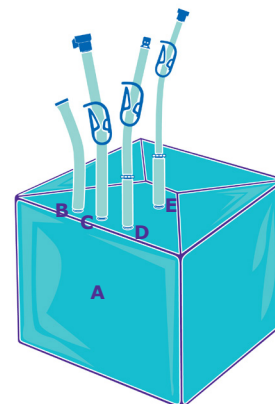
Product

59910C - Packaged Water for Injection (WFI)

59910C-50BNC	50 L Bag
59910C-200BNC	200 L Bag

50 L Bag Description

59910C-50BNC	Description	Material
A Bag	50 L Bag	ULDPE
B Filling Line	Filling Line, Sealed End	PVC/Silicone
C Connector 1	Filling Line, Sealed End Coupling Body 1/2 in. HB, MPX Sealing Plug MPX	TPE Polycarbonate Polycarbonate
D Connector 2	1/2 in. x 3/4 in. Tubing, 3 in. Length 1/2 in. x 3/8 in. HB Reduction Fitting 3/8 in. x 5/8 in. Tubing, 36 in. Length Coupling Insert, 3/8 in. HB, MPC Sealing Cap, MPC Total Tubing Length: approx. 40 in.	TPE Polypropylene TPE Polycarbonate Polycarbonate
E Connector 3	1/2 in. x 3/4 in. Tubing, 3 in. Length 1/2 in. x 1/4 in. HB Reduction Fitting 1/4 in. x 7/16 in. Tubing, 36 in. Length Coupling Body, 1/4 in. HB, MPC Coupling Insert, 1/4 in. HB, MPC 1/4 in. x 7/16 in. Tubing, 3 in. Length 1/4 in. HB x Female Luer Adapter Swabable Valve / Needleless Injection Site Male Luer Cap Total Tubing Length: approx. 43 in.	TPE Polypropylene TPE Polycarbonate Polycarbonate TPE Polypropylene Polycarbonate/Silicone Polycarbonate



200 L Bag Description

59910C-200BNC	Description	Material
A Bag	200 L Bag	ULDPE
B Filling Line	Filling Line, Sealed End	PVC/Silicone
C Connector 1	1/2 in. x 3/4 in. Tubing, 36 in. Length Coupling Body 1/2 in. HB, MPX Sealing Plug MPX	TPE Polycarbonate Polycarbonate
D Connector 2	1/2 in. x 3/4 in. Tubing, 3 in. Length 1/2 in. x 3/8 in. HB Reduction Fitting 3/8 in. x 5/8 in. Tubing, 36 in. Length Coupling Insert, 3/8 in. HB, MPC Sealing Cap, MPC Total Tubing Length: approx. 40 in.	TPE Polypropylene TPE Polycarbonate Polycarbonate
E Connector 3	1/2 in. x 3/4 in. Tubing, 3 in. Length 1/2 in. x 1/4 in. HB Reduction Fitting 1/4 in. x 7/16 in. Tubing, 36 in. Length Coupling Body, 1/4 in. HB, MPC Coupling Insert, 1/4 in. HB, MPC 1/4 in. x 7/16 in. Tubing, 3 in. Length 1/4 in. HB Swabable Valve / Needleless Injection Site Male Luer Cap Total Tubing Length: approx. 43 in.	TPE Polypropylene TPE Polycarbonate Polycarbonate TPE Polycarbonate/Silicone Polycarbonate

