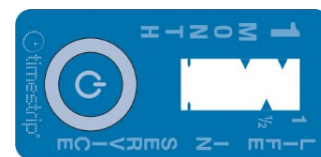


## 93064 Timestrip® 1 Month



### General

Each Timestrip® indicator is a small, self-adhesive label that can be attached to or integrated into a product, package or carrying card (see adhesive specification in Appendix 1 below for further details). It monitors elapsed time and indicates when key time markers and a pre-defined elapsed time have been reached. The indication of elapsed time is irreversible. Indicators can be made for many different temperature environments, but each product is calibrated for use in a specific temperature environment.

Timestrip® 1 month is calibrated for use at room temperature. Using this product in other temperature environments may affect its performance.

### How to use

Timestrip® indicators are completely inert prior to activation and can be stored at room temperature. To activate fully squeeze the button and within two minutes a red activation line will appear. If not, immediately re-squeeze the button fully. When the activation line appears, the indicator is armed and ready to use. The red dye will continue to progress until the maximum elapsed time has been reached.

### I) Performance Specifications

Run-Time:	1 month (30 days)
Calibration temperature:	22°C ± 1°C
Accuracy:	± 15 % in time under isothermal conditions
Progress Isotherms:	See Fig. 1
Activation Force*:	49 ± 19.6 N

\* Activation is applied by firmly squeezing the blister.

### II) Product Specification

Button Position:	Button on Top Layer (BOT)
Color of Progressing Front:	Red
Adhesive:	2641 Finger-lift 36/30 mm
Product drawing:	See Fig. 2
Graphics:	See Fig. 3
Usage:	The usage of the product in any assembly or production line must be agreed upon in advance, as it may alter performance specifications.
Other:	Not suitable for immersion in water.

### III) Product Construction

The indicator is constructed of a polymeric assembly multilayer and aluminum-plastic laminate. It encapsulates colored oils. All materials are non-toxic.

### IV) Storage Conditions (un-activated)

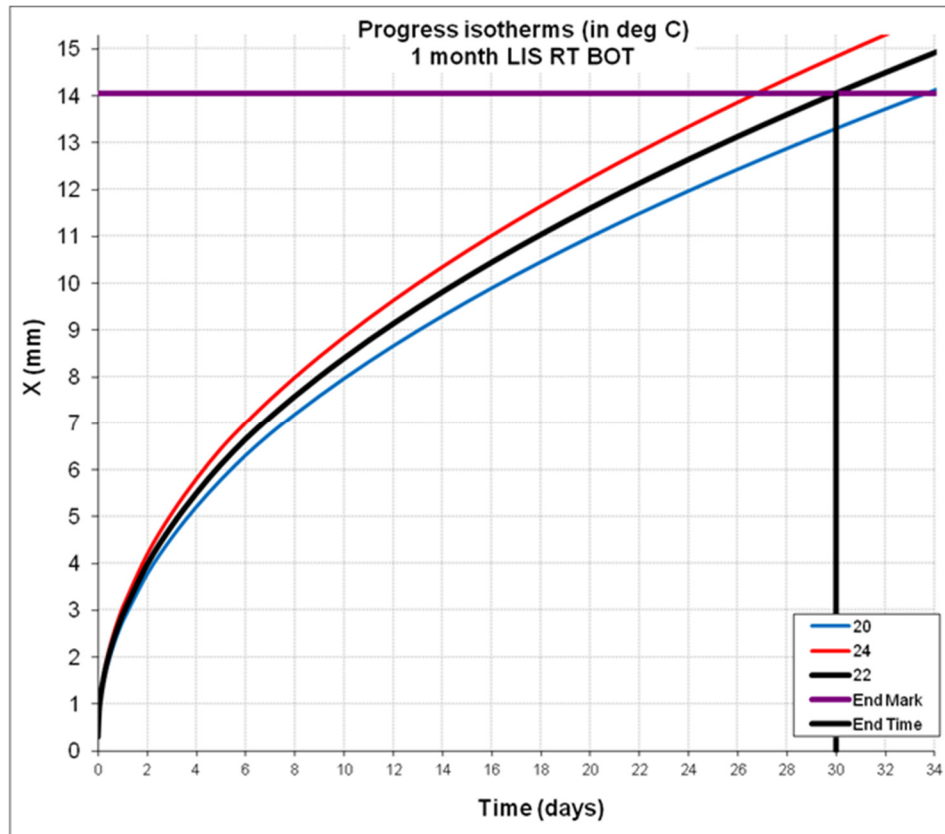
- Store in cool dark environment
- Recommended: 22°C/72°F at 20-80% RH
- Please note that before activation, the product can tolerate short term exposure during transit (hours or a few days) to temperatures in the range -30°C to +55°C. However, long term storage should be under recommended conditions.

### VI) Shelf-life

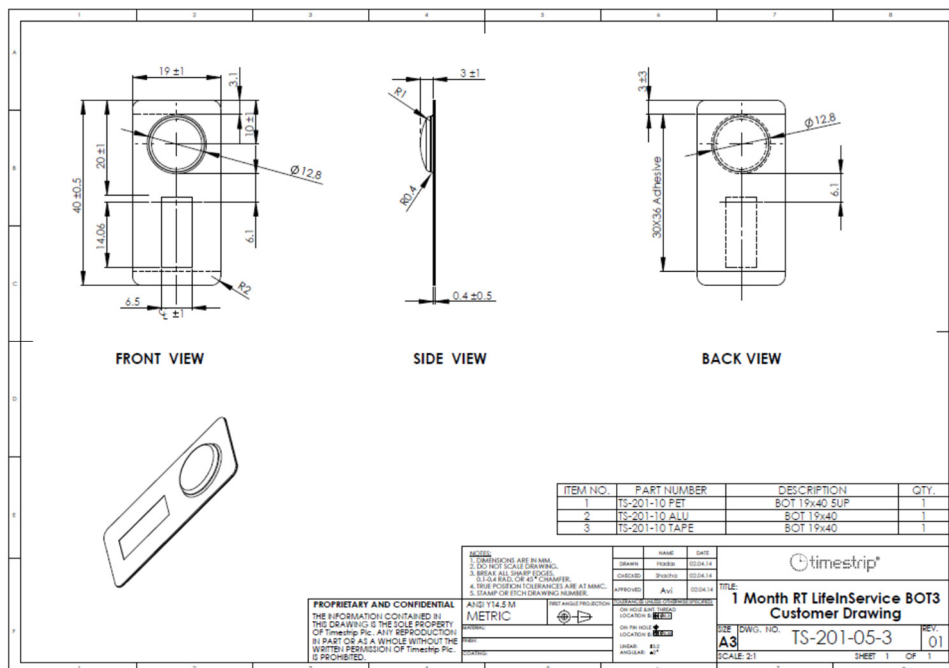
- 3 years from date of shipping



**Figure 1: Progress Isotherm**



**Figure 2: Product Drawing**

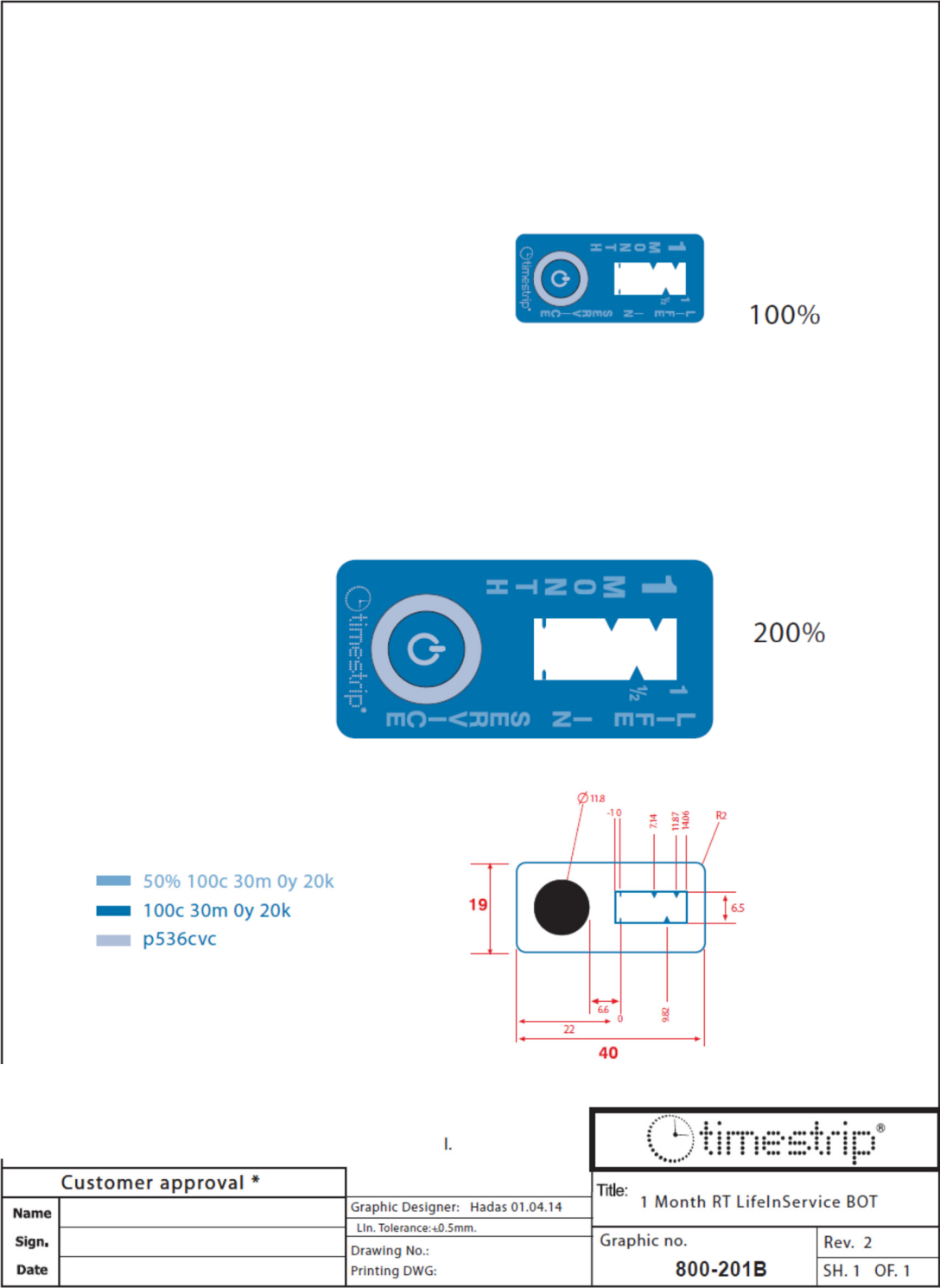


The vibrant M, Supelco, and Sigma-Aldrich are trademarks of Merck KGaA, Darmstadt, Germany or its affiliates. Detailed information on trademarks is available via publicly accessible resources.  
© 2018 Merck KGaA, Darmstadt, Germany and/or its affiliates. All Rights Reserved.

The life science business of Merck KGaA, Darmstadt, Germany operates as MilliporeSigma in the US and Canada.



Figure 3: Graphics



The vibrant M, Supelco, and Sigma-Aldrich are trademarks of Merck KGaA, Darmstadt, Germany or its affiliates. Detailed information on trademarks is available via publicly accessible resources.  
© 2018 Merck KGaA, Darmstadt, Germany and/or its affiliates. All Rights Reserved.

The life science business of Merck KGaA, Darmstadt, Germany operates as MilliporeSigma in the US and Canada.



## Appendix 1

### Pressure Sensitive Adhesive Data

Timestrip Adhesive - Product # 2641

<u>SUBSTANCE</u>		<u>THICKNESS</u>	
Adhesive	40gsm	Adhesive & Carrier	95 micron
Tissue	12gsm		
Adhesive	45gsm		
Liner	80gsm	Liner	70 micron

#### PRODUCT DESCRIPTION

A permanent tape with a tissue carrier. The adhesive is a modified acrylic, offering good UV light and chemical resistance together with high performance especially to difficult surfaces. The liner is a two side release system.

#### APPLICATIONS

The high tack/adhesion of 2641 makes it especially useful for applications involving the bonding of difficult substrates such as many foams, rubbers and polythene type materials. The product is also useful for various mounting applications.

<u>ADHESIVE PROPERTIES</u>		<u>20 min</u>	<u>24 hour</u>	<u>TEST METHOD</u>
Adhesion to steel	open side	1300 N/M	1400 N/M	BS7116:1990 - D
	closed side	1300 N/M	1400 N/M	BS7116:1990 - D
Shear Adhesion	open side	5 hours		BS7116:1990 - B
	closed side	5 hours		BS7116:1990 - B
Release of liner from adhesive		10 N/M		BS7116:1990 - E

#### THERMAL PROPERTIES

Recommended service temperature range	-40°C to 110°C	-40°F to 230°F
Application temperature range	5°C to 60°C	41°F to 140°F

#### SHELF LIFE

Minimum shelf life when stored in closed cartons away from direct sources of heat and sunlight.

2 Years

#### HEALTH AND SAFETY INFORMATION

The adhesive conforms to F&DA Regulation 175.105.

#### Note

Values given are average and should not be taken as a maximum or minimum for specification purposes. Specific technical details, applications information and suggested uses available.

