

# CH12.LX Mouse Lymphoma Cell Line

Cancer Cell Line

Cat. # SCC252

Pack size:  $\geq 1 \times 10^6$

viable cells/vial

FOR RESEARCH USE ONLY.  
NOT FOR USE IN DIAGNOSTIC PROCEDURES.  
NOT FOR HUMAN OR ANIMAL CONSUMPTION.

Store in liquid nitrogen



Data Sheet

page 1 of 3

## Background

Naïve B-cells differentiate and expand upon antigenic stimulation, undergoing class-switch recombination of immunoglobulin genes and forming antibody-producing plasma cells and memory cells that generate upon recall stimulation.<sup>1</sup> B-cell models are useful for elucidating pathways of differentiation and proliferation mechanisms of lymphoma.

The CH12.LX mouse lymphoma cell line is an established and well-characterized B-cell model. CH12.LX cells express Ly-1<sup>2</sup> and have the characteristic IgM<sup>+</sup>CD5<sup>+</sup>CD23<sup>-</sup> cell surface marker expression of B1a B lymphocytes, as well as expressing CD19, CD11b, MHC II and alpha-4-integrin.<sup>3</sup> CH12.LX cells are responsive to a variety of antigens including lipopolysaccharide, expressing the activation protein CD14.<sup>4</sup> CH12.LX cells proliferate rapidly and are ideal for studies of B-cell activation and expansion.

## Source

The CH12.LX cell line was generated from B10.H-2<sup>a</sup>H4<sup>b</sup>/Wts mice immunized with sheep erythrocytes.<sup>2</sup>

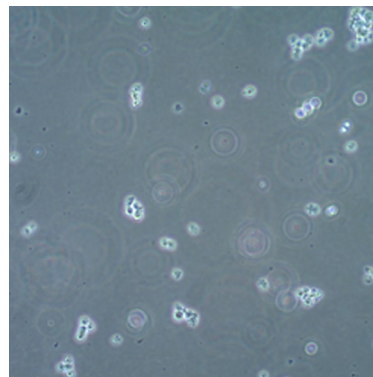
## Quality Control Testing

- Each vial contains  $\geq 1 \times 10^6$  viable cells.
- Cells are tested negative for infectious diseases by a Mouse Essential CLEAR panel by Charles River Animal Diagnostic Services.
- Cells are verified to be of mouse origin and negative for inter-species contamination from rat, human, chinese hamster, Golden Syrian hamster, and non-human primate (NHP) as assessed by a Contamination CLEAR panel by Charles River Animal Diagnostic Services.
- Cells are negative for mycoplasma contamination

## Storage & Handling

CH12.LX Mouse B-cell Lymphoma cell line should be stored in liquid nitrogen. The cells can be cultured for at least 10 passages after initial thawing without significantly affecting the cell marker expression and functionality.

## Representative Images



**Figure 1.** Brightfield image of CH12.LX mouse B-cell lymphoma cells.

## References

1. *Semin Hematol.* 1997; 34(1 Suppl 1): 2-12.
2. *Proc Natl Acad Sci USA.* 1986; 83(19): 7410-7414.
3. *J Immunotoxicol.* 2012; 9(2): 129-140.
4. *Scand J Immunol.* 2000; 51(4): 392-399.

Please visit [www.milliporesigma.com](http://www.milliporesigma.com) for additional product information and references.

Submit your published journal article and earn credit toward future purchases. Visit [www.milliporesigma.com/publicationrewards](http://www.milliporesigma.com/publicationrewards) to learn more!

## CH12.LX Mouse Lymphoma Cell Line

Cat # SCC252

### Protocols

CH12.LX Mouse Lymphoma cell line grow as suspension cells and thus do not require enzymatic detachment or dissociation. Passage when the cell density reaches 1–1.5 million cells/mL. Optimal plating density should be ~200,000 - 250,000 cells/mL. The cells should not be grown at excessively high densities.

**Important Note:** CH12.LX cells grow relatively slowly and may take several days to reach optimal density for passaging.

1. Do not thaw the cells until the recommended medium is on hand. Cells are thawed in RPMI-1640 (Sigma Cat. No. R0883) supplemented with 2 mM Glutamine (Cat. No. TMS-002-C) and 20% FBS (Cat. No. ES-009-B). Once established, cells are expanded in RPMI-1640 with 2 mM glutamine and 10% FBS.
2. Remove the vial of frozen CH12.LX cells from liquid nitrogen and incubate in a 37°C water bath. Closely monitor until the cells are completely thawed. Maximum cell viability is dependent on the rapid and complete thawing of frozen cells.

**IMPORTANT: Do not vortex the cells.**

3. As soon as the cells are completely thawed, disinfect the outside of the vial with 70% ethanol. Proceed immediately to the next step.
4. In a laminar flow hood, use a 1 or 2 mL pipette to transfer the cells to a sterile 15 mL conical tube. Be careful not to introduce any bubbles during the transfer process.
5. Using a 10 mL pipette, slowly add dropwise 9 mL of CH12.LX Thaw Medium (Step 1 above) to the 15 mL conical tube.

**IMPORTANT: Do not add the entire volume of media all at once to the cells. This may result in decreased cell viability due to osmotic shock.**

6. Gently mix the cell suspension by slowly pipetting up and down twice. Be careful not to introduce any bubbles.

**IMPORTANT: Do not vortex the cells.**

7. Centrifuge the tube at 300 x g for 2-3 minutes to pellet the cells.
8. Decant as much of the supernatant as possible. Steps 5-8 are necessary to remove residual cryopreservative (DMSO).
9. Resuspend the cells in 15 – 20 mL of CH12.LX Thaw Medium.
10. Transfer the cell suspension to a T75 flask.
11. Incubate the cells at 37°C in a humidified incubator with 5% CO<sub>2</sub>. CH12.LX suspension cells require media replenishment every 2-3 days. Once established, CH12.LX cells are expanded in RPMI-1640 with 2 mM glutamine and 10% FBS. Passage cells when the cell density is at 1 -1.5 million cells/mL.
12. Cells are typically plated at a density of 200,000 - 250,000 cells/mL

### Cryopreservation of Cells

CH12.LX Mouse B-Cell Lymphoma Cell Line may be frozen in the expansion medium plus 10% DMSO using a Nalgene slow freeze Mr. Frosty container.

■ antibodies ■ Multiplex products ■ biotools ■ cell culture ■ enzymes ■ kits ■ proteins/peptides ■ siRNA/cDNA products

Please visit [www.milliporesigma.com](http://www.milliporesigma.com) for additional product information, test data and references

MilliporeSigma, 28820 Single Oak Drive, Temecula, CA 92590, USA 1-800-437-7500

Technical Support: T: 1-800-MILLIPORE (1-800-645-5476) • F: 1-800-437-7502

**FOR RESEARCH USE ONLY.** Not for use in diagnostic procedures. Not for human or animal consumption. Purchase of this Product does not include any right to resell or transfer, either as a stand-alone product or as a component of another product. Any use of this Product for purposes other than research is strictly prohibited.

EMD Millipore®, the M mark, Upstate®, Chemicon®, Linco® and all other registered trademarks, unless specifically identified above in the text as belonging to a third party, are owned by Merck KGaA, Darmstadt, Germany. Copyright ©2008-2020 Merck KGaA, Darmstadt, Germany. All rights reserved.



We Buy 100% Certified Renewable Energy

**ACADEMIC USE AGREEMENT**  
(subject to local law)

**THIS PRODUCT MAY ONLY BE USED BY INDIVIDUALS EMPLOYED BY AN ACADEMIC INSTITUTION AND IS INTENDED SOLELY TO BE USED FOR ACADEMIC RESEARCH, WHICH IS FURTHER DEFINED BELOW. BY OPENING THIS PRODUCT, YOU (“PURCHASER”) HEREBY REPRESENT THAT YOU HAVE THE RIGHT AND AUTHORITY TO LEGALLY BIND YOURSELF AND/OR YOUR EMPLOYER INSTITUTION, AS APPLICABLE, AND CONSENT TO BE LEGALLY BOUND BY THE TERMS OF THIS ACADEMIC USE AGREEMENT. IF YOU DO NOT AGREE TO COMPLY WITH THESE TERMS, YOU MAY NOT OPEN OR USE THE PRODUCT AND YOU MUST CALL MILLIPORESIGMA (“SELLER”) CUSTOMER SERVICE (1-800-645-5476) TO ARRANGE TO RETURN THE PRODUCT FOR A REFUND.**

“Product” means CH12.LX Mouse Lymphoma Cell Line (SCC252)

“Academic Research” means any internal *in vitro* research use by individuals employed by an academic institution. Academic Research specifically excludes the following uses of whatever kind or nature:

- Re-engineering or copying the Product
- Making derivatives, modifications, or functional equivalents of the Product
- Obtaining patents or other intellectual property rights claiming use of the Product
- Using the Product in the development, testing, or manufacture of a Commercial Product
- Using the Product as a component of a Commercial Product
- Reselling or licensing the Product
- Using the Product in clinical or therapeutic applications including producing materials for clinical trials
- Administering the Product to humans
- Using the Product in collaboration with a commercial or non-academic entity

“Commercial Product” means any product intended for: (i) current or future sale; (ii) use in a fee-for-service; or (iii) any diagnostic, clinical, or therapeutic use.

Access to the Product is limited solely to those officers, employees, and students of PURCHASER’s academic institution who need access to the Product to perform Academic Research. PURCHASER shall comply with all applicable laws in its use and handling of the Product and shall keep it under reasonably safe and secure conditions to prevent unauthorized use or access.

These use restrictions will remain in effect for as long as PURCHASER possesses the Product.

**COMMERCIAL OR NON-ACADEMIC ENTITIES INTERESTED IN PURCHASING OR USING THE PRODUCT MUST CONTACT [licensing@emdmillipore.com](mailto:licensing@emdmillipore.com) AND AGREE TO SEPARATE TERMS OF USE PRIOR TO USE OR PURCHASE.**

---

■ antibodies ■ Multiplex products ■ biotools ■ cell culture ■ enzymes ■ kits ■ proteins/peptides ■ siRNA/cDNA products

Please visit [www.milliporesigma.com](http://www.milliporesigma.com) for additional product information, test data and references

MilliporeSigma, 28820 Single Oak Drive, Temecula, CA 92590, USA 1-800-437-7500

Technical Support: T: 1-800-MILLIPORE (1-800-645-5476) • F: 1-800-437-7502

**FOR RESEARCH USE ONLY.** Not for use in diagnostic procedures. Not for human or animal consumption. Purchase of this Product does not include any right to resell or transfer, either as a stand-alone product or as a component of another product. Any use of this Product for purposes other than research is strictly prohibited.

EMD Millipore®, the M mark, Upstate®, Chemicon®, Linco® and all other registered trademarks, unless specifically identified above in the text as belonging to a third party, are owned by Merck KGaA, Darmstadt, Germany. Copyright ©2008-2020 Merck KGaA, Darmstadt, Germany. All rights reserved.



We Buy 100% Certified Renewable Energy