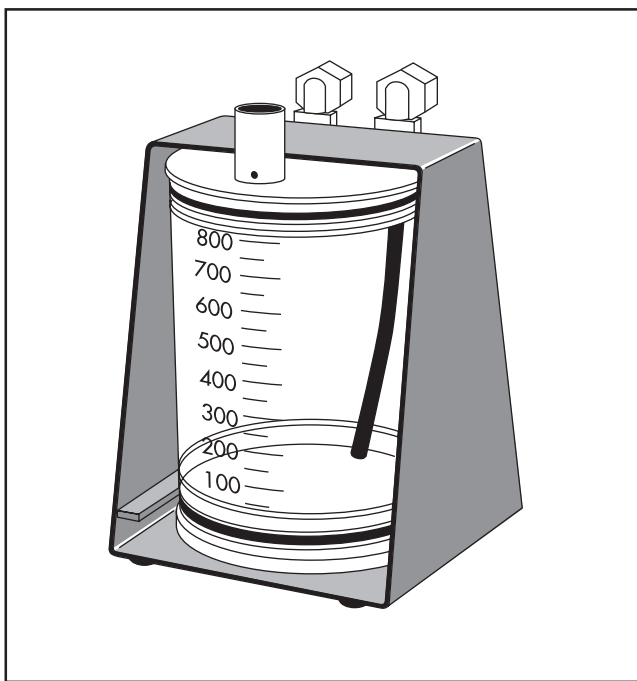


MINI-RESERVOIR

RC800

User Guide



MILLIPORE

Notice

The information in this document is subject to change without notice and should not be construed as a commitment by Millipore Corporation. Millipore Corporation assumes no responsibility for any errors that may appear in this document. This manual is believed to be complete and accurate at the time of publication. In no event shall Millipore Corporation be liable for incidental or consequential damages in connection with or arising from the use of this manual.



© 2004 Millipore Corporation. All rights reserved.

Millipore and Amicon are registered trademarks of Millipore Corporation.

Delrin is a registered trademark of E.I. du Pont de Nemours.

Contents

Introduction	1
Chemical and Temperature Resistance	1
Sterilization	1
Diagram of Mini-Reservoir RC800 Components	2
Setup	3
Diagram of Inlet/Outlet Fitting Components	3
Operation	4
Shutdown	4
Cleaning and Maintenance	4
System Disassembly	4
System Reassembly	4
Ordering Information	5
Specifications	6
Materials of Construction	6
Technical Assistance	6
Standard Warranty	7

Introduction

This 800 mL auxiliary reservoir (product no. 6028) increases the volume capacity of Millipore ultrafiltration cells. When pressurized from an external gas source, RC800 automatically replenishes liquid in the cell's built-in reservoir during filtration (due to the pressure differential between the two containers). With RC800 attached, volumes exceeding normal cell capacity can be processed unattended. The reservoir may also be used to store dialysate during diafiltration or dialysis.

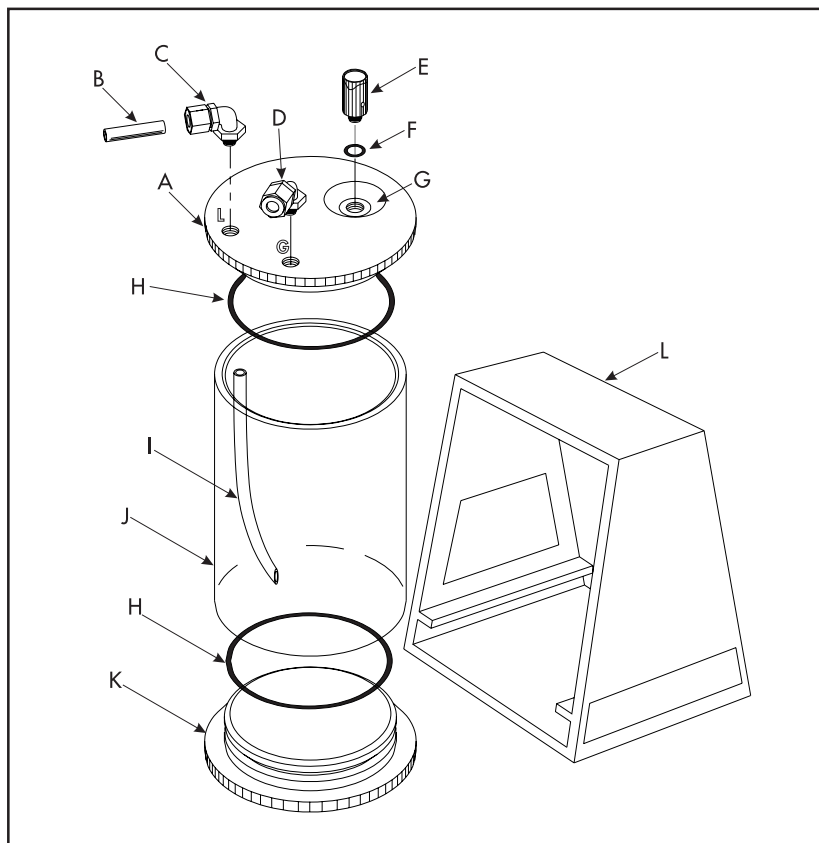
Chemical and Temperature Resistance

DO NOT use reservoir with alcohols, strong acids, oxidizing agents, strong bases or organic solvents (esters, ketones, aromatic and chlorinated hydrocarbons). DO NOT subject unit to temperatures over 100 °F (38 °C).

Sterilization

Use standard sterilizing gas mixtures or a 5% formalin solution. The RC800 reservoir is not autoclavable. DO NOT use alcohol.

Diagram of Mini-Reservoir RC800 Components

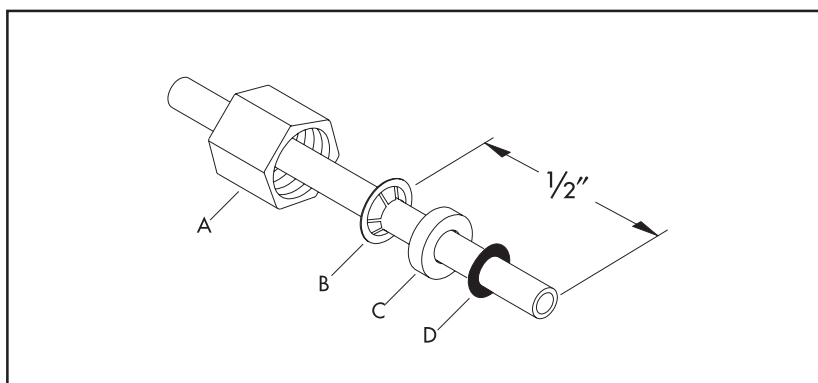


Letter	Description
A	Top cap
B	Tubing, 1/4" OD polyethylene, 2 x 4 ft.
C	Liquid outlet fitting
D	Gas inlet fitting
E	Pressure relief valve assembly
F	O-ring (relief valve)
G	Recessed port
H	O-ring (reservoir sleeve)
I	Tubing, 1/4" OD polyethylene, 1 x 4 3/4 in.
J	Reservoir sleeve
K	Bottom cap
L	Strap assembly

Setup

1. Connect an appropriate length of supplied tubing to gas inlet fitting on the reservoir top cap (marked “G”) as follows:
 - a. Unscrew hexagonal nut and remove the O-ring.
 - b. Slide nut, grab ring, spacer (countersunk side toward grab ring), and O-ring onto tubing. Leave no more than $\frac{1}{2}$ " (13mm) of tubing beyond grab ring.
 - c. Insert exposed tubing into reservoir fitting; hand tighten nut.
 - d. Connect free end of tubing to fitting of an external gas source.
2. Repeat step 1 to connect tubing to liquid outlet fitting on the reservoir top cap (marked “L”). Connect free end of this tubing to ultrafiltration cell.
3. Remove pressure-relief valve assembly from top cap. Add liquid to reservoir sleeve; then replace valve assembly, making sure O-ring is in place. Hand tighten.

Diagram of Inlet/Outlet Fitting Components



Letter	Description
A	Hexagonal nut
B	Grab ring
C	Spacer
D	O-ring

Operation

Turn on gas and slowly pressurize reservoir. Check connections for leaks, then increase pressure as desired. Liquid will flow continuously from reservoir into cell until the pressures in the two containers equalize.

CAUTION: DO NOT operate reservoir at pressures over 75 psi (5.2 bar).

Shutdown

Turn off gas supply to reservoir. To vent system, turn upper portion of pressure relief valve.

Cleaning and Maintenance

In normal use, this unit should not be disassembled. To add buffer or introduce cleaning solutions, remove the pressure relief valve assembly and add liquid through the recessed port. If disassembly is required, the procedures below must be strictly followed.

System Disassembly

1. Vent system pressure and disconnect gas and liquid tubing.
2. Remove pressure-relief valve assembly.
3. Remove reservoir assembly from trapezoidal strap assembly.
4. Pry top and bottom caps from reservoir sleeve, using tool provided.
5. Remove O-rings from top and bottom caps.
6. Wash all parts with soap and water.

System Reassembly

1. Inspect O-rings for cuts or wear; if necessary, replace any damaged ones with spares.
2. Lubricate O-rings with glycerin or water and reposition them on top and bottom caps.
3. Push top and bottom caps into reservoir sleeve until properly seated, then slide reservoir assembly into strap assembly.

Ordering Information

This section lists the catalogue numbers for the Mini-Reservoir RC800 and its replacement and accessory parts. See the Technical Assistance section for information about contacting Millipore.

Replacement Parts	Catalogue No.	Qty
Top cap	20973	1
Reservoir sleeve	20961	1
Bottom cap	20959	1
O-ring (reservoir sleeve)	2239S	4
Tubing 1/4" OD polyethylene	XXPE 000 10	10 ft.
Pressure relief valve assembly	1002102	1
O-ring (relief valve)	2015B	2
Gas inlet/liquid outlet fitting, elbow, 1/4 × 1/4" NPT	4201301002	3
Strap assembly	15324	1
Cap removal tool	21143	1

Accessory Equipment	Catalogue No.	Qty
CDS10 Concentration/Dialysis Selector For instant switching from concentration to rapid dialysis (Diafiltration).	6003	1
MF2 Push-Button Manifold For operation of multiple cells or reservoirs; individually valved.	6015	1
TA1 Tubing Adapter Kit Adapts plastic tubing to 1/8" or 1/4" male or female gas fittings.	6022	1

Specifications

Capacity: 800 mL

Holdup volume: 4 mL

Maximum operating pressure: 75 psi (5.2 bar)

Dimensions of reservoir assembly:

4 3/4 in. diameter × 5 1/4 in. high (12 cm × 13.3 cm)

Weight (including strap): 3.7 lbs (1.7 kg)

Materials of Construction

Reservoir sleeve: acrylic

Top and bottom caps: Delrin® resin

Tubing fittings: nylon

Tubing: polyethylene

O-rings (red): silicone rubber

O-rings (black): Buna-N nitrile rubber

Compliance with the Pressure Equipment Directive, 97/23/EC

Millipore Corporation certifies that this product complies with the European Pressure Equipment Directive, 97/23/EC of 29 May 1997.

This product is classified under Article 3 § 3 of the Pressure Equipment Directive. It has been designed and manufactured in accordance with sound engineering practice to ensure safe use.

The product is accompanied by user instructions and bears markings to permit identification of Millipore Corporation as the manufacturer or authorized representative of this product within the European Community.

In compliance with Article 3 § 3 of the Pressure Equipment Directive, this product does not bear the CE mark.

Technical Assistance

For more information, contact the Millipore office nearest you. In the U.S., call **1-800-MILLIPORE** (1-800-645-5476). Outside the U.S., see your Millipore catalogue for the phone number of the office nearest you or go to our web site at www.millipore.com/offices for up-to-date worldwide contact information. You can also visit the tech service page on our web site at www.millipore.com/techservice.

Standard Warranty

Millipore Corporation ("Millipore") warrants its products will meet their applicable published specifications when used in accordance with their applicable instructions for a period of one year from shipment of the products. **MILLIPORE MAKES NO OTHER WARRANTY, EXPRESSED OR IMPLIED. THERE IS NO WARRANTY OF MERCHANTABILITY OR FITNESS FOR A PARTICULAR PURPOSE.** The warranty provided herein and the data, specifications and descriptions of Millipore products appearing in Millipore's published catalogues and product literature may not be altered except by express written agreement signed by an officer of Millipore. Representations, oral or written, which are inconsistent with this warranty or such publications are not authorized and if given, should not be relied upon.

In the event of a breach of the foregoing warranty, Millipore's sole obligation shall be to repair or replace, at its option, the applicable product or part thereof, provided the customer notifies Millipore promptly of any such breach. If after exercising reasonable efforts, Millipore is unable to repair or replace the product or part, then Millipore shall refund to the customer all monies paid for such applicable product or part. **MILLIPORE SHALL NOT BE LIABLE FOR CONSEQUENTIAL, INCIDENTAL, SPECIAL OR ANY OTHER INDIRECT DAMAGES RESULTING FROM ECONOMIC LOSS OR PROPERTY DAMAGE SUSTAINED BY ANY CUSTOMER FROM THE USE OF ITS PRODUCTS.**

MILLIPORE