

Data Sheet

WB-F344 Rat Liver Progenitor Cell Line

Immortalized Cell Line

Cat. # SCC253**pack size: $\geq 1 \times 10^6$
viable cells/vial**FOR RESEARCH USE ONLY
NOT FOR USE IN DIAGNOSTIC PROCEDURES
NOT FOR HUMAN OR ANIMAL CONSUMPTION

Store at: liquid nitrogen

Background

Among adult organs, the liver has the unique ability to regenerate after injury, a feature that has generated a high level of interest in liver progenitor cells for therapeutic uses. Liver progenitor cells (also known as oval cells) have potential to differentiate into either of the two epithelial cell types in the liver, biliary epithelial cells or hepatocytes.¹ The inherent versatility and clinical applicability of liver progenitor cells highlight the importance of cellular models for this cell type.

WB-F344 is a highly cited, spontaneously immortalized rat liver progenitor cell line. WB-F344 cells are derived from adult tissue yet have the characteristic phenotype of oval cells and proliferate rapidly.³ WB-F344 cells express markers of liver progenitor cells, including EpCAM, Thy1, and α -fetoprotein.³ WB-F344 cells are non-tumorigenic, but can undergo neoplastic transformation both in response to treatment with carcinogenic agents⁴ and spontaneously when maintained in a post-confluent state.⁵ The WB-F344 cell line is a well-established and versatile model for studies of liver cell renewal, differentiation, and origination of hepatic cancers.

Source

WB-F344 rat liver progenitor cell line was isolated from the liver epithelium of an adult Fischer-344 rat.²

Quality Control Testing

- Each vial contains $\geq 1 \times 10^6$ viable cells.
- Cells are tested negative for infectious diseases by a Mouse/Rat Comprehensive CLEAR Panel by Charles River Animal Diagnostic Services.
- Cells are verified to be of rat origin and negative for inter-species contamination from mouse, human, chinese hamster, Golden Syrian hamster, and Non-human Primate (NHP) as assessed by a Contamination Clear panel by Charles River Animal Diagnostic Services
- Cells are negative for mycoplasma contamination.

The life science business of Merck KGaA, Darmstadt, Germany operates as MilliporeSigma in the US and Canada.



Submit your published journal article and earn credit toward future EMD Millipore purchases. Visit www.emdmillipore.com/publicationrewards to learn more!

EMD Millipore Corporation, 28820 Single Oak Drive, Temecula, CA 92590, USA 1-800-437-7500

FOR RESEARCH USE ONLY. Not for use in diagnostic procedures. Not for human or animal consumption. Purchase of this Product does not include any right to resell or transfer, either as a stand-alone product or as a component of another product. Any use of this Product for purposes other than research is strictly prohibited. Chemicon®, Upstate®, and all other trademarks, unless specifically identified above in the text as belonging to a third party, are owned by Merck KGaA, Darmstadt, Germany. Copyright ©2008-2021 Merck KGaA, Darmstadt, Germany. All rights reserved. 20306518; Version 2.0

Ver.1.0/04Aug2021/SCC253-DS/NC

Storage and Handling

WB-F344 Rat Liver Progenitor Cells should be stored in liquid nitrogen. The cells can be cultured for at least 10 passages after initial thawing without significantly affecting functionality.

Representative Data

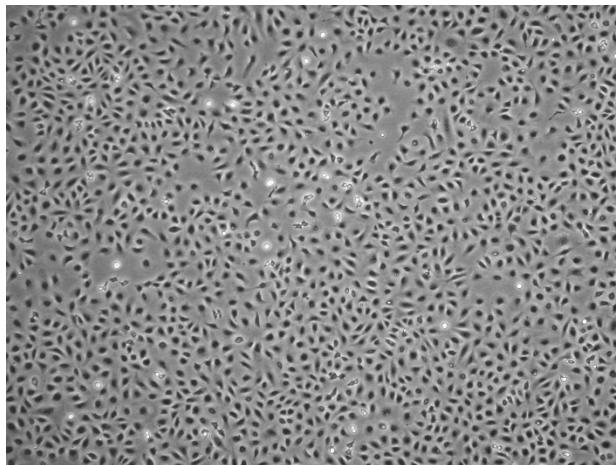


Figure 1. Bright-field image of WB-F344 rat liver progenitor cells one day after thaw in a T75 flask.

Protocols

Thawing Cells

Note: WB-F344 cells proliferate rapidly. We recommend thawing cells into a T225 flask.

1. Do not thaw the cells until the recommended medium is on hand. Cells can grow on normal tissue cultureware surfaces without any additional coating.

Cells are thawed and expanded in WB-F344 Expansion Medium comprised of Modified IMEM with L-Glutamine (ThermoFisher A1048901) with 25 mM HEPES (Sigma TMS-003-C), 50 µg/mL Gentamycin (Sigma 345815), 1 mL/L Insulin at 10 mg/mL (Sigma I0516) and 10% FBS (Sigma ES-009-B).

2. Remove the vial of frozen WB-F344 cells from liquid nitrogen and incubate in a 37°C water bath. Closely monitor until the cells are completely thawed. Maximum cell viability is dependent on the rapid and complete thawing of frozen cells.

IMPORTANT: Do not vortex the cells.

3. As soon as the cells are completely thawed, disinfect the outside of the vial with 70% ethanol. Proceed immediately to the next step.
4. In a laminar flow hood, use a 1 or 2 mL pipette to transfer the cells to a sterile 50 mL conical tube. Be careful not to introduce any bubbles during the transfer process.

The life science business of Merck KGaA, Darmstadt, Germany
operates as MilliporeSigma in the US and Canada.



- Using a 10 mL pipette, slowly add dropwise 9 mL of WB-F344 Expansion Medium (Step 1 above) to the 15 mL conical tube.

IMPORTANT: Do not add the entire volume of media all at once to the cells. This may result in decreased cell viability due to osmotic shock.

- Gently mix the cell suspension by slowly pipetting up and down twice. Be careful not to introduce any bubbles.

IMPORTANT: Do not vortex the cells.

- Centrifuge the tube at 300 x g for 2-3 minutes to pellet the cells.
- Decant as much of the supernatant as possible. Steps 5-8 are necessary to remove residual cryopreservative (DMSO).
- Resuspend the cells in 50 mL of WB-F344 Expansion Medium.
- Transfer the cell mixture to a T225 tissue culture flask.
- Incubate the cells at 37°C in a humidified incubator with 5% CO₂.

Subculturing Cells

- WB-F344 cells should be passaged at ~80-85% confluency. Do not allow the cells to grow over 85% confluency.
- Carefully remove the medium from the T225 tissue culture flask containing the 80% confluent layer of WB-F344 cells.
- Rinse the flask with 50 mL 1X PBS. Aspirate after the rinse.
- Apply 25 mL of Accutase and incubate in a 37°C incubator for 3-5 minutes.
- Inspect the flask and ensure the complete detachment of cells by gently tapping the side of the flask with the palm of your hand.
- Add 25 mL of WB-F344 Expansion Medium to the plate.
- Gently rotate the flask to mix the cell suspension. Transfer the dissociated cells to a 50 mL conical tube.
- Centrifuge the tube at 300 x g for 3-5 minutes to pellet the cells.
- Discard the supernatant, then loosen the cell pellet by tapping the tip of the tube with a finger.
- Apply 2-5 mL of WB-F344 Expansion Medium to the conical tube and resuspend the cells thoroughly.

IMPORTANT: Do not vortex the cells.

- Count the number of cells using a hemocytometer.
- Plate the cells to the desired density. Typical split ratio is 1:6.

Cryopreservation of Cells

WB-F344 cells may be frozen in WB-F344 Expansion Medium and 10% DMSO using a Nalgene slow freeze Mr. Frosty container.

The life science business of Merck KGaA, Darmstadt, Germany
operates as MilliporeSigma in the US and Canada.



References

1. *Int J Exp Pathol* 2005, 86(1): 1-18.
2. *Stem Cells Cloning* 2010, 3: 39-47.
3. *Exp Cell Res* 1984, 154(1): 38-52.
4. *Am J Pathol* 1989, 135(1): 63-71.
5. *Am J Pathol* 1998, 153(6): 1913-1921.

The life science business of Merck KGaA, Darmstadt, Germany
operates as MilliporeSigma in the US and Canada.



ACADEMIC USE AGREEMENT
(subject to local law)

THIS PRODUCT MAY ONLY BE USED BY INDIVIDUALS EMPLOYED BY AN ACADEMIC INSTITUTION AND IS INTENDED SOLELY TO BE USED FOR ACADEMIC RESEARCH, WHICH IS FURTHER DEFINED BELOW. BY OPENING THIS PRODUCT, YOU ("PURCHASER") HEREBY REPRESENT THAT YOU HAVE THE RIGHT AND AUTHORITY TO LEGALLY BIND YOURSELF AND/OR YOUR EMPLOYER INSTITUTION, AS APPLICABLE, AND CONSENT TO BE LEGALLY BOUND BY THE TERMS OF THIS ACADEMIC USE AGREEMENT. IF YOU DO NOT AGREE TO COMPLY WITH THESE TERMS, YOU MAY NOT OPEN OR USE THE PRODUCT AND YOU MUST CALL MILLIPORESIGMA ("SELLER") CUSTOMER SERVICE (1-800-645-5476) TO ARRANGE TO RETURN THE PRODUCT FOR A REFUND.

"Product" means WB-F344 Rat Liver Progenitor Cell Line (SCC253).

"Academic Research" means any internal *in vitro* research use by individuals employed by an academic institution. Academic Research specifically excludes the following uses of whatever kind or nature

- Re-engineering or copying the Product
- Making derivatives, modifications, or functional equivalents of the Product
- Obtaining patents or other intellectual property rights claiming use of the Product
- Using the Product in the development, testing, or manufacture of a Commercial Product
- Using the Product as a component of a Commercial Product
- Reselling or licensing the Product
- Using the Product in clinical or therapeutic applications including producing materials for clinical trials
- Administering the Product to humans
- Using the Product in collaboration with a commercial or non-academic entity

"Commercial Product" means *any* product intended for: (i) current or future sale; (ii) use in a fee-for-service; or (iii) any diagnostic, clinical, or therapeutic use.

Access to the Product is limited solely to those officers, employees, and students of PURCHASER's academic institution who need access to the Product to perform Academic Research. PURCHASER shall comply with all applicable laws in its use and handling of the Product and shall keep it under reasonably safe and secure conditions to prevent unauthorized use or access.

These use restrictions will remain in effect for as long as PURCHASER possesses the Product.

COMMERCIAL OR NON-ACADEMIC ENTITIES INTERESTED IN PURCHASING OR USING THE PRODUCT MUST CONTACT licensing@emdmillipore.com AND AGREE TO SEPARATE TERMS OF USE PRIOR TO USE OR PURCHASE.

The life science business of Merck KGaA, Darmstadt, Germany
operates as MilliporeSigma in the US and Canada.

