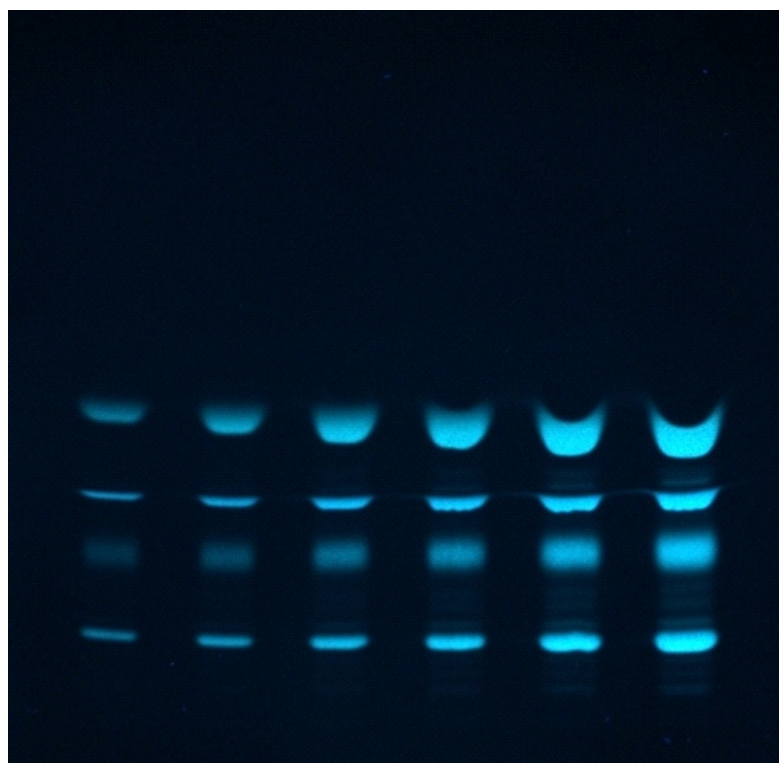


Separation of peptides

Plate	ProteoChrom® HPTLC Silica gel 60 F254s (P/N 1. 05650)
Mobile phase (v/v)	2-butanol/pyridin/ammonia25%/water (39/34/10/26)
Migration distance	5 cm
Chamber	Normal chamber without chamber saturation
Detection	0,02% Fluorescamin solution in acetone spray 20s and dry 10min at room temperature Detection UV @ 366nm



← Val-Try-Val

← Angiotensin II

← H-YGSGTAK-NH2

← H-YGSG-pT-AK-NH2

Chromatographic data

No.	Compounds	Concentration (mg/ml)	Solvent	Application volume μ l
1 to 6	H-YGSG-pT-AK-NH2	1,0	water/ACN 85/15	0,5
	H-YGSGTAK-NH2	1,0		1,0
	angiotensin II	1,6		2,0
	Val-Try-Val	1,0		3,0
				5,0
				7,0