

**Caution:**

Use of this equipment in a manner other than specified by these instructions may impair protection provided by the equipment.

**Indications for Use:**

WIG-L-Bug is designed for mixing dental amalgams and cements.

**Technical Specifications:**

Speeds: 3800 rpm-4800 rpm.

Capacity: Designed to use amalgam capsules with lengths between 1.250" and 1.350".

Power Requirements: 115v ± 10%, 0.5A, AC, 60 Hz.

Fuse Rating: 2 amps, 250 volts

**Contraindications:** None known.

**Adverse Reactions:** None known.

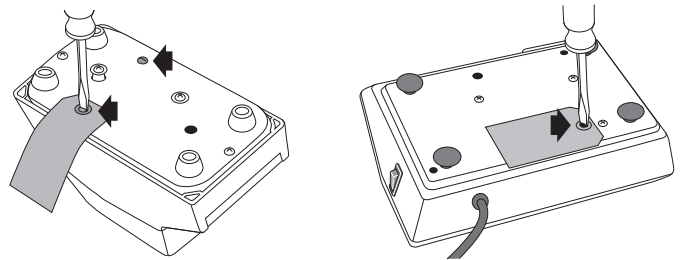
**Warnings:**

This equipment is not designed for use in hazardous atmospheres or with hazardous materials.

**Mercury is a health hazard.** Tighten capsule completely to prevent mercury escaping during trituration. Immediately replace any capsule that becomes worn or loose-fitting. Close safety cover during use.

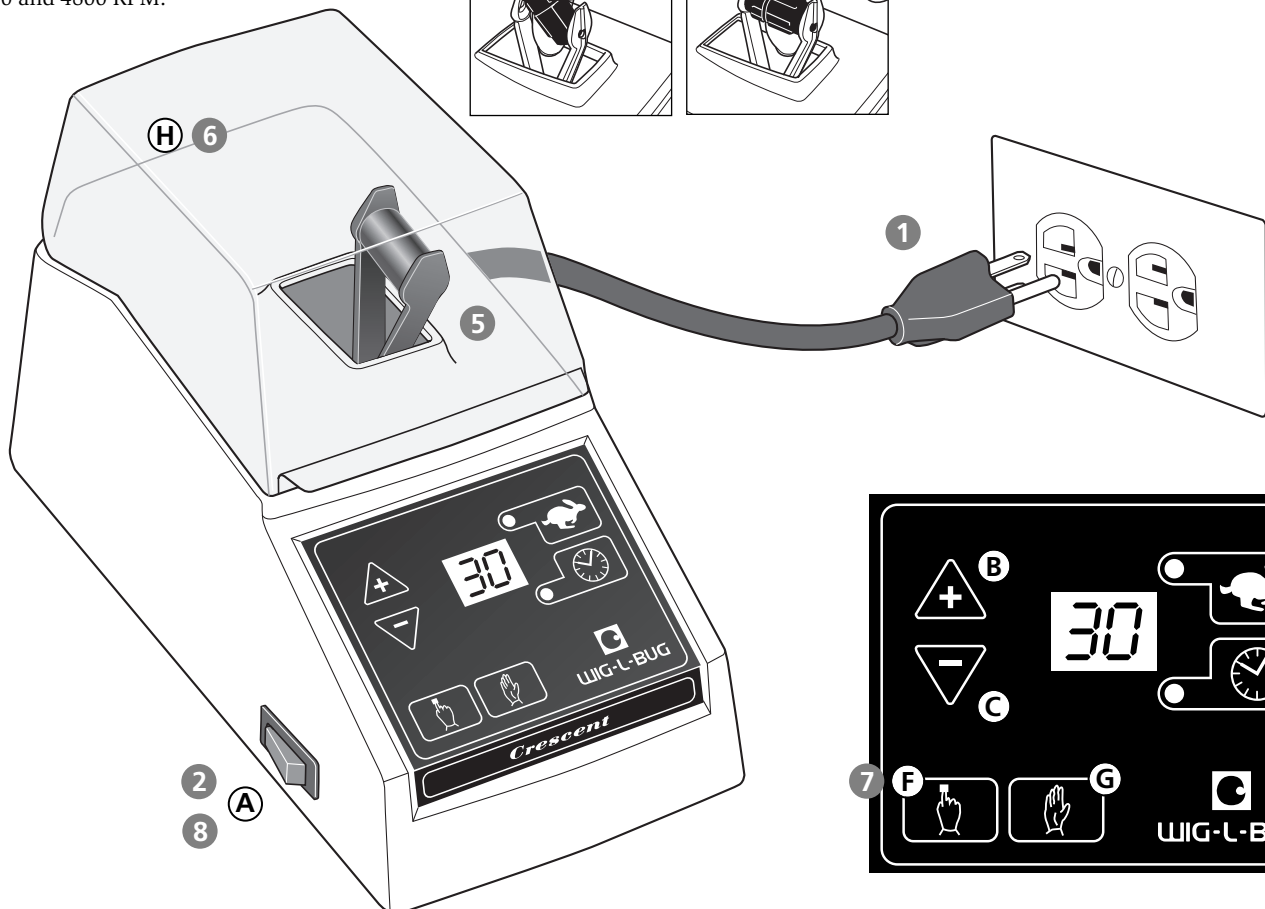
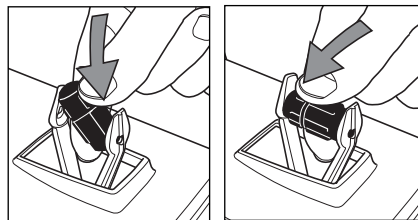
**Precautions:**

1. Carefully remove unit from packing material.
2. Remove the red packing screws from bottom of the unit. Save the screws; should it ever become necessary to transport your WIG-L-BUG, the screws must be reinstalled to prevent damage in shipping.



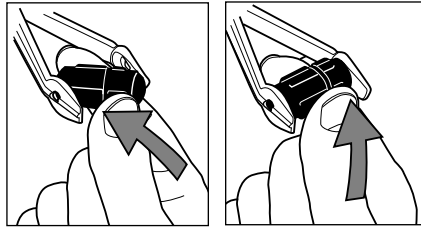
**Step by Step Instructions • Model MSD**

- 1 Plug into grounded outlet.
- 2 Turn on power switch **A**.
- 3 Set time: Press **E** and adjust with **B & C**. Available range is from 0 to 30 seconds.
- 4 Set speed: Press **D** and adjust with **B & C**. Four speeds are available: 3800, 4200, 4600 and 4800 RPM.
- 5 Load capsule. Insert one end of capsule into holding arm, then push other end down to lock in place. Use only standard amalgam capsules.
- 6 Close safety cover **H**.
- 7 Press **F** to start. Unit will automatically stop when preset time expires. To stop at any time, press **G**.
- 8 Turn off unit when not in use.



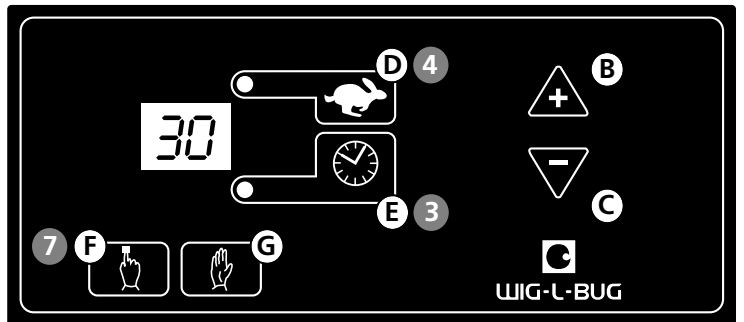
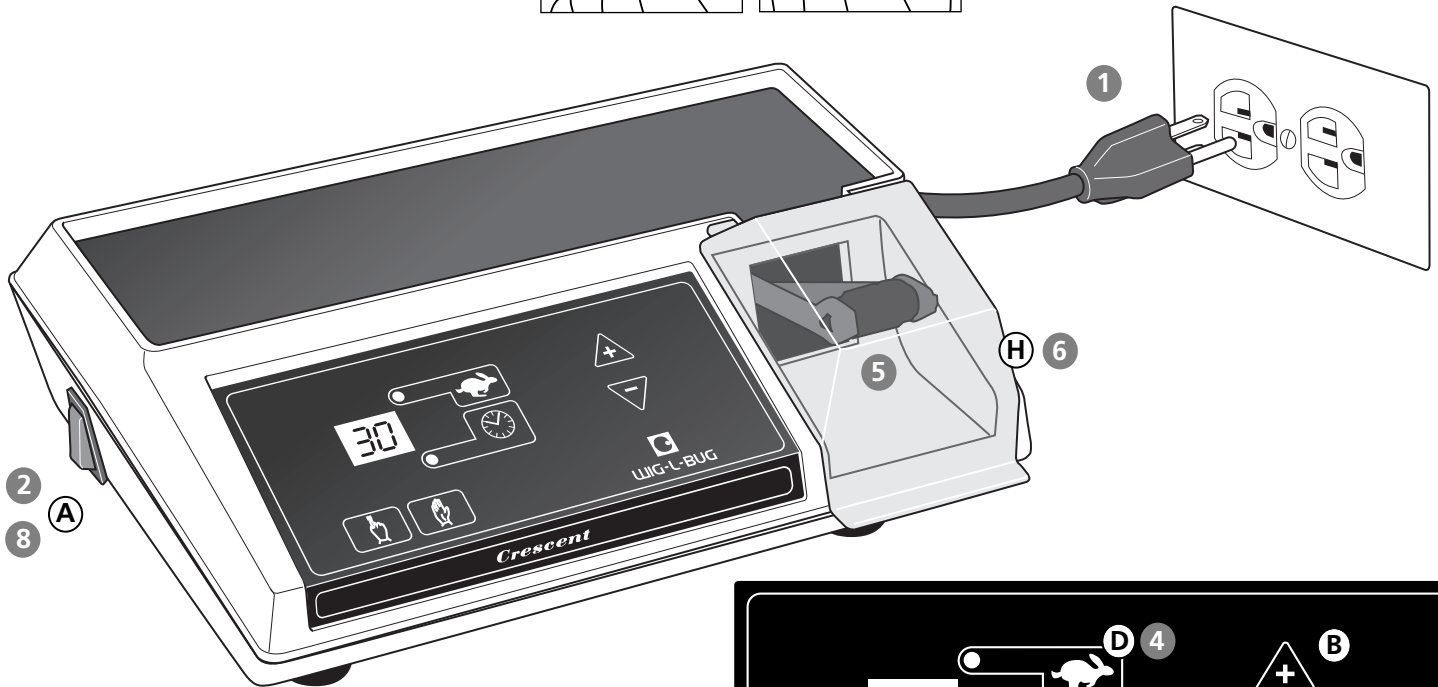
- 1 Plug into grounded outlet.
- 2 Turn on power switch **A**.
- 3 Set time: Press **E** and adjust with **B & C**. Available range is from 0 to 30 seconds.
- 4 Set speed: Press **D** and adjust with **B & C**. Four speeds are available: 3800, 4200, 4600 and 4800 RPM.

- 5 Load capsule. Insert one end of capsule into holding arm, then push other end down to lock in place.



**Use only standard amalgam capsules. The WIG-L-BUG LPD does not accept Fuji capsules or any capsule with a tail or pouring spout.**

- 6 Close safety cover **H**.
- 7 Press **F** to start. Unit will automatically stop when preset time expires. To stop at any time, press **G**.
- 8 Turn off unit when not in use.



**Environmental Conditions:**

For indoor use only, and in temperatures of 41°F-104°F (5°C-40°C).

Altitude up to 6700 feet (2000 meters).

Maximum relative humidity:  
80% for temperatures up to 31°C,  
50% for temperatures up to 40°C.

Overvoltage Category II

Pollution Degree II

Ground protective conductor terminal

**Maintenance:**

Unplug from power before cleaning.

Clean with a soft, damp cloth.

Do not use an abrasive cleaner.

Contains no user-serviceable parts.

**Warranty:**

The WIG-L-BUG is warranted for parts and labor for one year after proof of purchase is established.

**REF**

- C020100 Model LPD Wig-L-Bug Mixer, 110V/60 AC
- C020200 Model MSD Wig-L-Bug Mixer, 110V/60 AC
- C030044 Fibre Arm Assembly
- C030127 Motor, 110/220V (DS801, MSD)
- C030130 Motor, 110V (LP60, LP602, LP602E, LPD)
- C030172 Safety Cover, Model LPD
- C030175 Safety Cover, Model MSD
- C140005 Screw Type Capsule and Pestle
- C140015 Screw Type Capsule Only
- C140035 Ball Pestle Only, Stainless Steel

Manufactured by  
DENTSPLY RINN  
A Division of DENTSPLY International Inc.  
1301 Smile Way  
York, PA 17404 USA

www.DENTSPLY.com  
Customer Service: 800-323-0970  
Fax: 800-544-0787



Rinn®, Crescent® and Wig-L-Bug® are registered trademarks of DENTSPLY International Inc.  
©2014 DENTSPLY International Inc.  
All rights reserved.