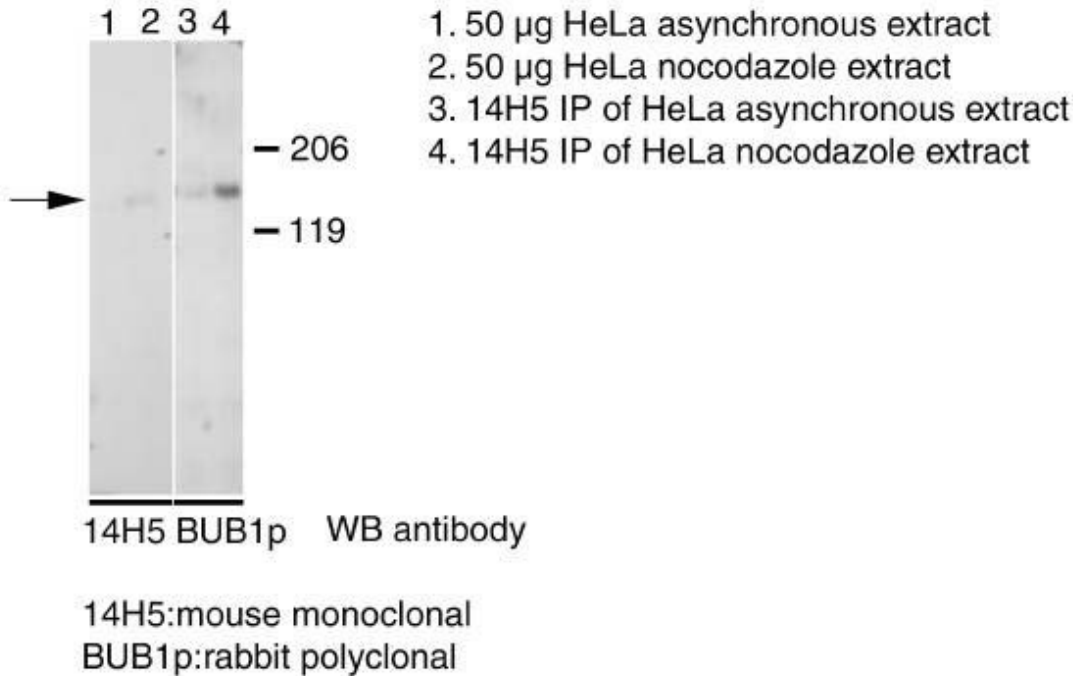




MOUSE ANTI-BUB1 MONOCLONAL ANTIBODY

CATALOG NUMBER:	MAB3610
LOT NUMBER:	
QUANTITY:	100 µg
CONCENTRATION:	1 mg/mL
SPECIFICITY:	Recognizes human Bub1.
BACKGROUND:	The mitotic checkpoint prevents the resulting two daughter cells from having unequal numbers of chromosomes. This condition, known as aneuploidy, is present in almost all cancer cells and may be due to malfunctions in the mitotic checkpoint. Bub1 is a mitotic checkpoint kinase and has been implicated in the metaphase checkpoint control in mammalian cells.
IMMUNOGEN:	Recombinant human Bub1.
ISOTYPE:	IgG ₁
CLONE:	14H5
APPLICATIONS:	Western blot using an ECL detection system. Reacts with the ~150 kDa Bub1 protein. Immunocytochemistry: 1 µg/mL on tissue culture cells. Suggested fix is 3.5% PBS-buffered paraformaldehyde for 7 minutes. Permeabilization method is 0.2% Triton-X-100 after fixation. Suggested blocking buffer is 10 mM Tris, pH 7.5 with 150 mM NaCl with 0.1% BSA. Immunoprecipitation: 1 µg/mL. Preferred cell lysis buffer is RIPA. Final reaction volume is 200 µL with a final protein concentration in the reaction mix of 1 mg/mL. Suggested capture agent is Protein G. Optimal working dilutions must be determined by the end user.
SPECIES REACTIVITIES:	Human and primate. Reactivity with other species has not been confirmed.
FORMAT:	Purified immunoglobulin.
PRESENTATION:	Liquid
STORAGE/HANDLING:	Maintain at 2-8°C in undiluted aliquots for up to 6 months after date of receipt.



Important Note: *During shipment, small volumes of antibody will occasionally become entrapped in the seal of the product vial. For antibodies with volumes of 200 µl or less, we recommend gently tapping the vial on a hard surface or briefly centrifuging the vial in a tabletop centrifuge to dislodge any liquid in the container's cap.*

FOR RESEARCH USE ONLY; NOT FOR USE IN DIAGNOSTIC PROCEDURES. NOT FOR HUMAN OR ANIMAL CONSUMPTION

Unless otherwise stated in our catalog or other company documentation accompanying the product(s), our products are intended for research use only and are not to be used for any other purpose, which includes but is not limited to, unauthorized commercial uses, in vitro diagnostic uses, ex vivo or in vivo therapeutic uses or any type of consumption or application to humans or animals.