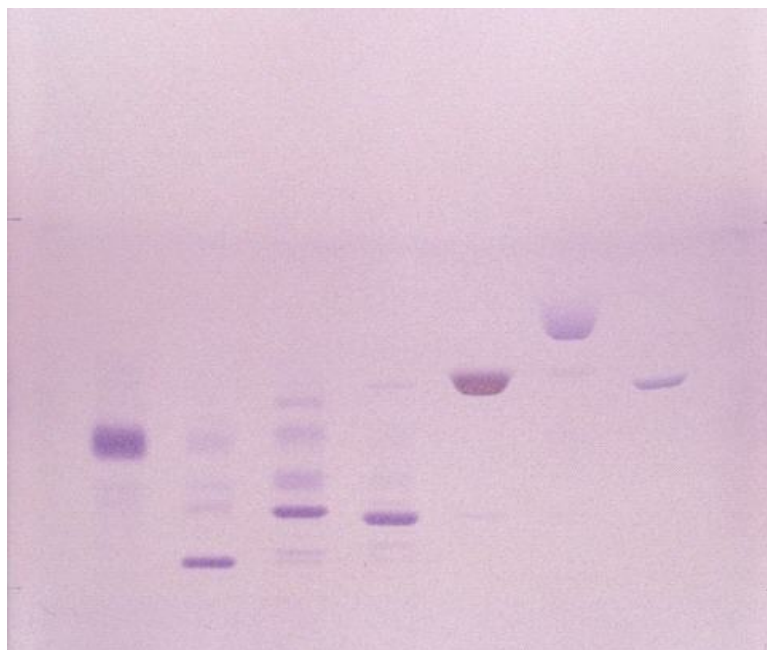


Separation of peptides

Plate	ProteoChrom® HPTLC Silica gel 60 F254s (P/N 1. 05650)
Mobile phase (v/v)	2-butanol/pyridin/ammonia25%/water (39/34/10/26)
Migration distance	5 cm
Chamber	Normal chamber without chamber saturation
Detection	0,5% Ninhydrin spray 20s and heat 1-2min at 110°C Detection white light



Chromatographic data

No.	Compounds	Concentration (mg/ml)	Solvent	Application volume µl
1	H-YGSGTAK-NH ₂	1,0	water/ACN 85/15	7,0
2	H-pY-GSGTAK-NH ₂	1,0		7,0
3	H-YG-ps-GTAK-NH ₂	1,0		7,0
4	H-YGSG-pT-AK-NH ₂	1,0		7,0
5	Gly-Try	1,0		7,0
6	Val-Try-Val	1,0		7,0
7	angiotensin II	1,0		7,0