

**BCL-2 (Clone: 124), IHC-Paraffin Staining Report**

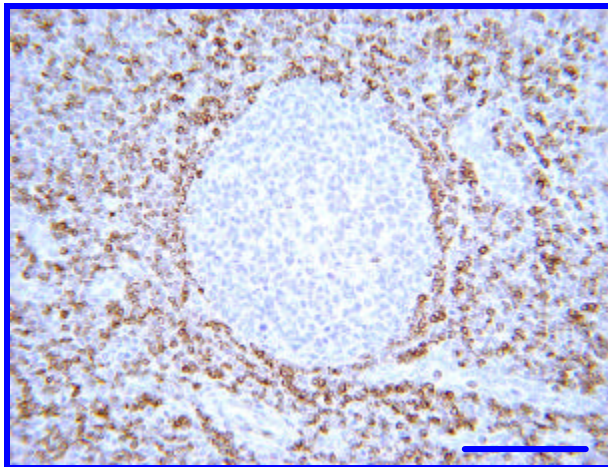
<b>Target Antigen:</b>	BCL-2 (Clone: 124)
<b>Catalog or ID #:</b>	IHC2033
<b>Host and Isotype:</b>	Mouse IgG1
<b>Clone:</b>	Clone: 124
<b>Purity and Method:</b>	FPLC Purified by Protein-A Affinity Chromatography
<b>Concentration and Quantity:</b>	Prediluted
<b>Storage Conditions:</b>	2-4.0°C refrigerated
<b>Species Reactivity:</b>	Human. Reactivity with other species has not been confirm
<b>IHC-Paraffin Fixation Tested:</b>	10% neutral Buffered Formalin
<b>IHC-Paraffin Titer:</b>	N/A
<b>IHC-Paraffin Pretreatment(s):</b>	Heat Induced Epitope Retrieval (HIER) with EDTA pH 8.0. On human tonsil it did not work without Epitope retrieval, Citrate Buffer nor did it work with TE Buffer.
<b>IHC-Paraffin Protocol:</b>	<b>IHC-Select, HRP-DAB</b> (Brief Outline): Blocking Reagent for 5 min. Primary Antibody (or Negative Control Reagent) for 10 min. Biotinylated Secondary Antibody for 10 min. Streptavidin-HRP for 10 min. DAB for 10 min. Hematoxylin for 1 min.
<b>Positive Tissue(s):</b>	Tonsil, Lymph node or Lymphoma
<b>Subcellular/ Location(s):</b>	Diffusive lymphoproliferative diseases. i.e. follicular lymphoma of the gastro intestinal tract, hairy cell leukemia, high grade B- and T-cell lymphomas. Lymphoblastic lymphoma, anaplastic large cell lymphoma "Ki-lymphoma." Cytoplasmic staining.
<b>Negative Tissue(s):</b>	Non-lymphatic/normal tissue.
<b>Comments and References:</b>	Staining is as expected since it was cytoplasm-expressed on lymphocytes in the mantle zone (low density) and not in the germinal center. Studies have demonstrated that bcl-2 protein is used to distinguish neoplastic germinal centers from reactive ones



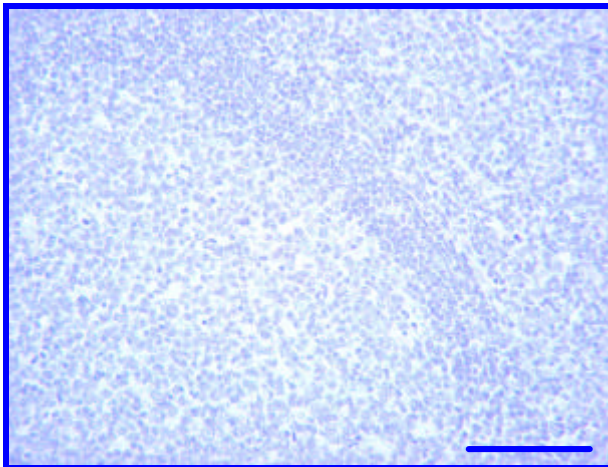
**CHEMICON**  
INTERNATIONAL

**IHC – Paraffin Staining Examples:**

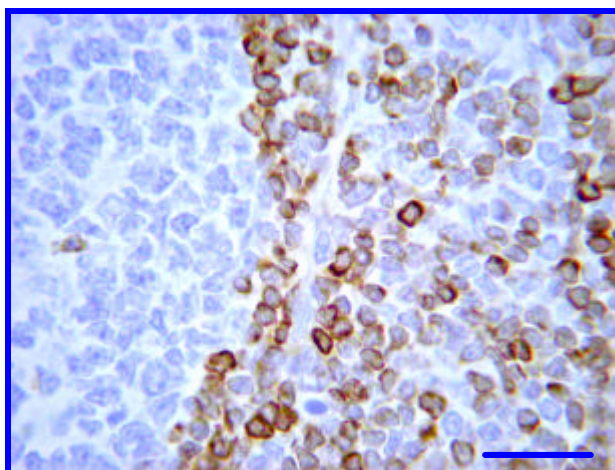
**Pictures of Optimal Staining With EDTA Epitope Retrieval: Human Tonsil**



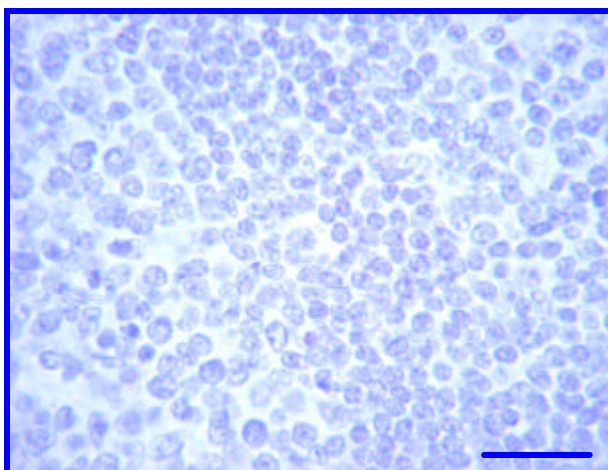
BCL-2 (IHC2033, clone: 124) staining of Human Tonsil. Tissue pretreated with EDTA, pH 8.0, Prediluted Antibody, IHC-Select Detection with HRP-DAB. Lymphocytes in the mantle zone stain strongly (brown), cells in germinal center are negative. Bar = 100 $\mu$ m.



Negative Control staining of Human Tonsil. Tissue pretreated with EDTA, pH 8.0, Prediluted Antibody, IHC-Select Detection with HRP-DAB. No background staining is detected. Bar = 100 $\mu$ m.



BCL-2 (IHC2033, clone: 124) staining of Human Tonsil. Tissue pretreated with EDTA, pH 8.0, Prediluted Antibody, IHC-Select Detection with HRP-DAB. Lymphocytes in the mantle zone stain strongly (brown), cells in germinal center are negative. Bar = 25 $\mu$ m.



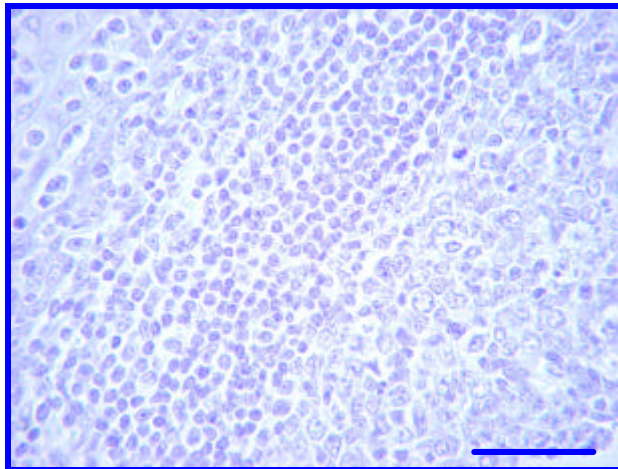
Negative Control staining of Human Tonsil. Tissue pretreated with EDTA, pH 8.0, Prediluted Antibody, IHC-Select Detection with HRP-DAB. No background staining is detected. Bar = 25 $\mu$ m.



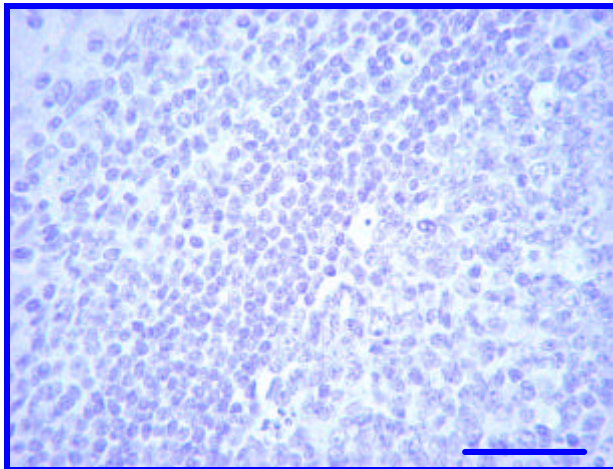
**CHEMICON**  
INTERNATIONAL

**IHC – Paraffin Staining Examples:**

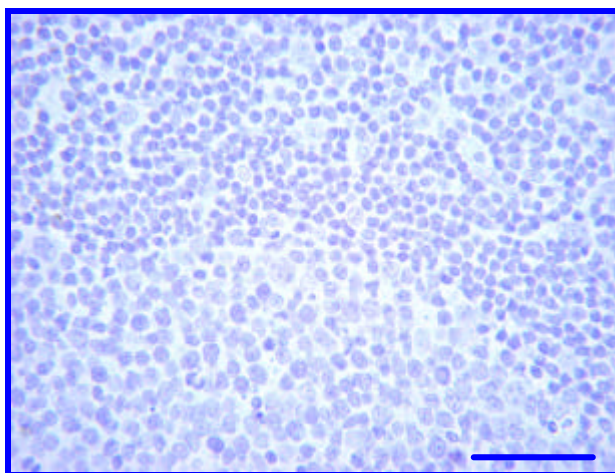
**Pictures of Staining Without Epitope Retrieval, Citrate buffer and TE Buffer: Human Tonsil**



BCL-2 (IHC2033, Clone: 124) staining of Human Tonsil. Tissue without pretreatment, Prediluted Antibody, IHC-Select Detection with HRP-DAB. No signal (brown) detected. Bar = 50µm.



BCL-2 (IHC2033, Clone: 124) staining of Human Tonsil. Tissue pretreated with Citrate, pH 6.0, Prediluted Antibody, IHC-Select Detection with HRP-DAB. No signal (brown) detected. Bar = 50µm.



BCL-2 (IHC2033, Clone: 124) staining of Human Tonsil. Tissue pretreated with TE, pH 9.0, Prediluted Antibody, IHC-Select Detection with HRP-DAB. No signal (brown) detected. Bar = 50µm.