



3050 Spruce Street
Saint Louis, Missouri 63103 USA
Telephone (800) 325-5832 (314) 771-5765
Fax (314) 286-7828
email: techserv@sial.com
sigma-aldrich.com

Product Information

Cat. No. C-155

nor-b-CIT

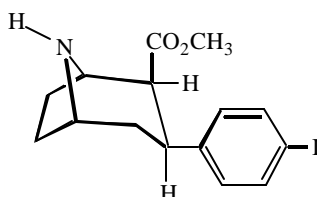
Analog of the dopamine transporter blocker β -CIT;
intermediate for synthesis of functionalized phenyltropanes.

Mol. Formula: C₁₅H₁₈INO₂

Mol. Wt.: 371.22 (anhyd.)

m.p.: 116-117°C

CAS Registry No.: 136794-87-1



Chemical Name: (-)-2- β -Carbomethoxy-3- β -(4-iodophenyl)nortropane

Physical Properties: Yellow hygroscopic crystals. $[\alpha]_D^{25} = -67.4^\circ$ (c = 1, CHCl₃).

Caution: The pharmacology of this compound is incompletely characterized and due care should be exercised in its use. Avoid skin contact, ingestion or inhalation.

Storage: Store desiccated at -20°C.

Solubility: Soluble in ethanol or 0.1N HCl; insoluble in dilute aqueous base or water.

Disposal: Dissolve or mix the compound with a combustible solvent and burn in a chemical incinerator equipped with an afterburner and scrubber.

References:

1. Neumeyer, J.L., Wang, S., Milius, R.A., Baldwin, R., Zea-Ponce, Y., Hoffer, P.B., Sybirska, E., Al-Tikriti, M., Charney, D.S., Malison, R.T., Laruelle, M., Innis, R.B. "SPECT and PET imaging of monoamine reuptake sites with [¹²³I] and [¹¹C]-2- β -carbomethoxy-3- β -(4-iodophenyl)-tropane (3-CIT)." *J. Med. Chem.* **34**, 3144-3146 (1991).
2. Innis, R., Baldwin, R., Sybirska, E., Zea, Y., Laruelle, M., Al-Tikriti, M., Charney, D., Zoghbi, S., Smith, E., Wisniewski, G., Hoffer, P., Wang, S., Milius, R., Neumeyer, J. "Single photon emission computed tomography imaging of monoamine reuptake sites in primate brain with [¹²³I]CIT." *Eur. J. Pharmacol.* **200**, 369-370 (1991).

TELEPHONE ORDERS ARE NOT ACCEPTED FOR THIS COMPOUND.

Rev. 4/97

Sigma-RBI brand products are sold through Sigma-Aldrich, Inc.

Sigma-Aldrich, Inc. warrants that its products conform to the information contained in this and other Sigma-Aldrich publications. Purchaser must determine the suitability of the product(s) for their particular use. Additional terms and conditions may apply.

Please see reverse side of the invoice or packing slip.