

Data Sheet

## ALMC-1 Plasma Cell Myeloma Cell Line

Cancer Cell Line

**SCC430****Pack Size:  $\geq 1 \times 10^6$  viable cells/vial****Store in liquid nitrogen.****FOR RESEARCH USE ONLY****Not for use in diagnostic procedures. Not for human or animal consumption.**

### Background

Primary systemic amyloidosis is a plasma cell disease characterized by deposition of misfolded immunoglobulin (Ig) light chain products as amyloid fibrils throughout vital tissues and organs. Amyloidosis may present as a range of symptoms, including nervous system dysfunction, swelling, fatigue, and pain in the extremities.<sup>1</sup> Patients with amyloidosis often suffer from other plasma cell diseases such as multiple myeloma, making the study of amyloidosis and development of potential targeted treatments extremely challenging.

ALMC-1 was the first plasma cell amyloidosis cell line isolated and is characterized by c-myc amplification and deletion of the tumor suppressor p53.<sup>2</sup> The Ig lambda secreted by ALMC-1 cells has been shown to form amyloid fibrils *in vitro*.<sup>2</sup> ALMC-1 cells proliferate in presence of IL-6, a critical factor supporting tumor growth in the bone marrow microenvironment.<sup>2</sup> ALMC-1 cells are hypotetraploid, express CD44, and overexpress the oncogene *MAFB*.<sup>2</sup> The ALMC-1 plasma cell myeloma cell line represents a valuable and clinically relevant model for amyloidosis and studies of the mechanisms of myeloma progression.

### Source

The ALMC-1 cell line was isolated from bone marrow of a 50-year-old female patient with amyloidosis and later diagnosed with multiple myeloma.<sup>3</sup>

### Short Tandem Repeat (STR) Profile

D3S1358: 15, 16	Penta E: 10, 12	D16S539: 11	D8S1179: 11, 13
TH01: 6, 9.3	D5S818: 9, 11	CSF1PO: 11, 12	TPOX: 8, 11
D21S11: 29, 32	D13S317: 13	Penta D: 10, 11	FGA: 20, 25
D18S51: 11, 17	D7S820: 10, 11	vWA: 15, 17	Amelogenin: X

Cancer cell lines are inherently genetically unstable. Genetic instability may arise in the form of loss of heterozygosity of alleles at one or more genetic sites with increased passages.

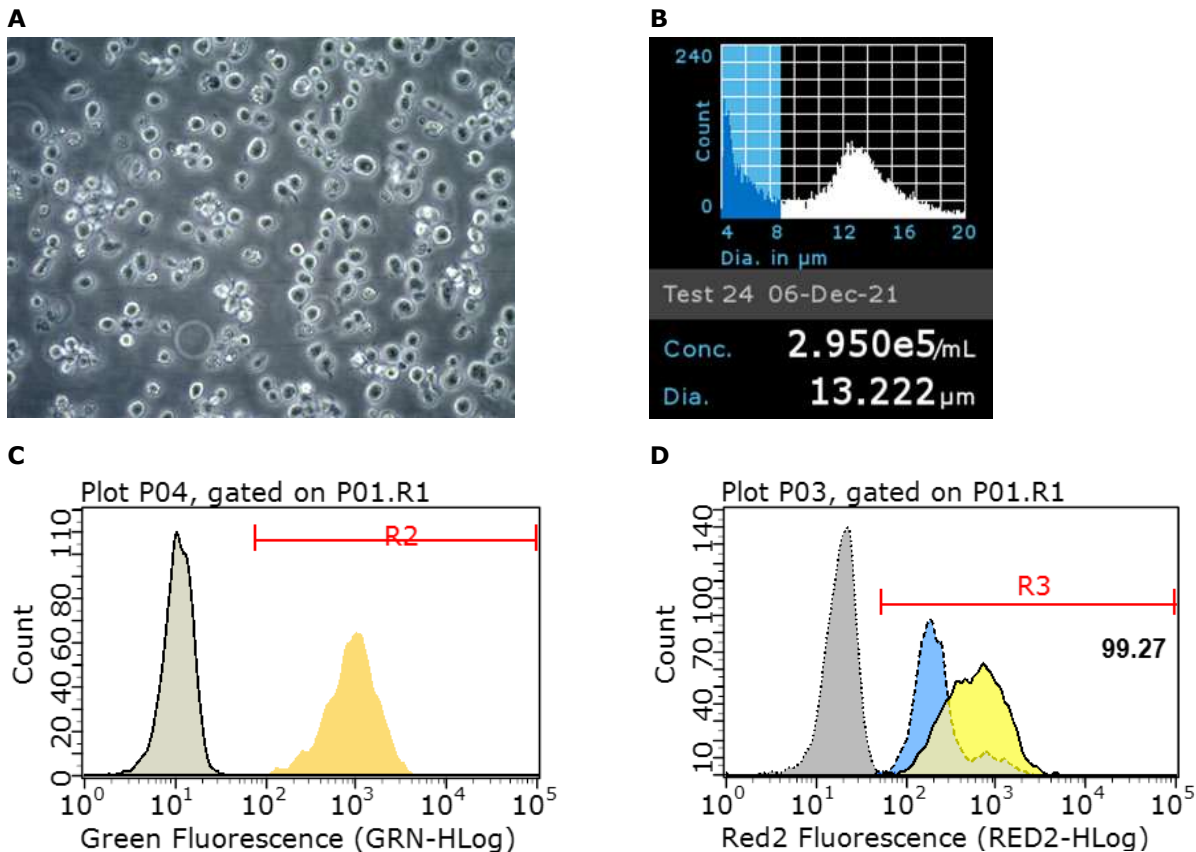
## Quality Control Testing

- Each vial contains  $\geq 1 \times 10^6$  viable cells.
- Cells are tested negative for infectious diseases by a Human Essential CLEAR panel by Charles River Animal Diagnostic Services.
- Cells are verified to be of human origin and negative for inter-species contamination from mouse, rat, chinese hamster, Golden Syrian hamster, and Non-human Primate (NHP) as assessed by a Contamination Clear panel by Charles River Animal Diagnostic Services.
- Cells are negative for mycoplasma contamination.

## Storage and Handling

ALMC-1 Plasma Cell Myeloma Cell Line should be stored in liquid nitrogen until use. The cells can be cultured for at least 10 passages after initial thawing without significantly affecting the cell marker expression and functionality.

## Representative Data



**Figure 1.** (A) Bright-field image of ALMC-1 cells two days after thaw in a T25 flask. (B) Cell counting was performed using Scepter™ 3.0 Handheld Automated Cell Counter using 40 μm sensor tips (PHCC340KIT). (C) ALMC-1 cells express CD44, CD138 (blue histogram, D) and CD38 (yellow histogram, D) Optional as needed.

## Protocols

ALMC-1 cells grow as suspension cells and thus do not require enzymatic detachment or dissociation. Maintain the cell density in the range of 600,000-900,000 cells/mL. Optimal plating density upon passaging is 300,000-400,000 cells/mL. The cells should not be grown at excessively high densities. Flasks should be maintained upright to provide a comfortable density for the cells.

1. Do not thaw the cells until the recommended medium is on hand. Cells are thawed in ice cold ALMC Thaw Medium containing Iscove's Modified Dulbecco's Medium (IMDM, I6529) with 2 mM L-Glutamine (TMS-002-C), 20% FBS (ES-009-B) and 2 ng/mL IL-6 (GF338). After the first passage, cells may be transitioned to ALMC Expansion Medium containing 10% FBS (see step 10 for formulation).
2. Remove the vial of frozen ALMC-1 cells from liquid nitrogen and incubate in a 37 °C water bath. Closely monitor until the cells are completely thawed. Maximum cell viability is dependent on the rapid and complete thawing of frozen cells.

**IMPORTANT:** Do not vortex the cells.

3. As soon as the cells are completely thawed, disinfect the outside of the vial with 70% ethanol. Proceed immediately to the next step.
4. In a laminar flow hood, use a 1-2 mL pipette to transfer the cells to a sterile 15 mL conical tube. Be careful not to introduce any bubbles during the transfer process.
5. Using a 10 mL pipette, slowly add dropwise 9 mL of ice cold ALMC Thaw Medium (Step 1 above) to the 15 mL conical tube.

**IMPORTANT:** Do not add the entire volume of media all at once to the cells. This may result in decreased cell viability due to osmotic shock.

6. Gently mix the cell suspension by slowly pipetting up and down twice. Be careful not to introduce any bubbles.

**IMPORTANT:** Do not vortex the cells.

7. Centrifuge the tube at 300 x *g* at 2-8 °C for 2-3 minutes to pellet the cells.
8. Decant as much of the supernatant as possible. Steps 5-8 are necessary to remove residual cryopreservative (DMSO).
9. Resuspend the cells in 7-10 mL of ice cold ALMC Thaw Medium (Step 1 above).
10. Transfer the cell suspension to a T25 flask in an upright position. Place the flask in an upright position in a 37 °C humidified incubator with 5% CO<sub>2</sub>. Transition to ALMC Expansion Medium containing Iscove's Modified Dulbecco's Medium with 2 mM L-Glutamine, 10% FBS and 2 ng/mL IL-6 when the cells are proliferating well, typically after the first passage. Exchange media every 2-3 days. Passage cells when the cell density reaches 600,000-900,000 cells/mL.
11. Cells are typically plated at a density of 300,000-400,000 cells/mL.

## Cryopreservation of Cells

ALMC-1 cells may be frozen in ALMC Thaw Medium containing 10% DMSO using a Nalgene® slow freeze Mr. Frosty® container.

## References

1. J Am Coll Cardiol 2016; 68(12): 1323-1341.
2. Blood 112 Suppl 2008; 1: 2732a-2832a.
3. Cancer Res 1993; 53:5320-5327.

## Academic Use Agreement

Subject to local law

THIS PRODUCT MAY ONLY BE USED BY INDIVIDUALS EMPLOYED BY AN ACADEMIC INSTITUTION AND IS INTENDED SOLELY TO BE USED FOR ACADEMIC RESEARCH, WHICH IS FURTHER DEFINED BELOW. BY OPENING THIS PRODUCT, YOU ("PURCHASER") HEREBY REPRESENT THAT YOU HAVE THE RIGHT AND AUTHORITY TO LEGALLY BIND YOURSELF AND/OR YOUR EMPLOYER INSTITUTION, AS APPLICABLE, AND CONSENT TO BE LEGALLY BOUND BY THE TERMS OF THIS ACADEMIC USE AGREEMENT. IF YOU DO NOT AGREE TO COMPLY WITH THESE TERMS, YOU MAY NOT OPEN OR USE THE PRODUCT AND YOU MUST CALL MILLIPORESIGMA ("SELLER") CUSTOMER SERVICE (1-800-645-5476) TO ARRANGE TO RETURN THE PRODUCT FOR A REFUND.

"Product" means ALMC-1 Plasma Cell Myeloma Cell Line (SCC430).

"Academic Research" means any internal in vitro research use by individuals employed by an academic institution. Academic Research specifically excludes the following uses of whatever kind or nature:

- Re-engineering or copying the Product
- Making derivatives, modifications, or functional equivalents of the Product
- Obtaining patents or other intellectual property rights claiming use of the Product
- Using the Product in the development, testing, or manufacture of a Commercial Product
- Using the Product as a component of a Commercial Product
- Reselling or licensing the Product
- Using the Product in clinical or therapeutic applications including producing materials for clinical trials
- Administering the Product to humans
- Using the Product in collaboration with a commercial or non-academic entity

"Commercial Product" means any product intended for: (i) current or future sale; (ii) use in a fee-for-service; or (iii) any diagnostic, clinical, or therapeutic use.

Access to the Product is limited solely to those officers, employees, and students of PURCHASER's academic institution who need access to the Product to perform Academic Research. PURCHASER shall comply with all applicable laws in its use and handling of the Product and shall keep it under reasonably safe and secure conditions to prevent unauthorized use or access.

These use restrictions will remain in effect for as long as PURCHASER possesses the Product.

COMMERCIAL OR NON-ACADEMIC ENTITIES INTERESTED IN PURCHASING OR USING THE PRODUCT MUST CONTACT [licensing@emdmillipore.com](mailto:licensing@emdmillipore.com) AND AGREE TO SEPARATE TERMS OF USE PRIOR TO USE OR PURCHASE.

---

## Notice

We provide information and advice to our customers on application technologies and regulatory matters to the best of our knowledge and ability, but without obligation or liability. Existing laws and regulations are to be observed in all cases by our customers. This also applies in respect to any rights of third parties. Our information and advice do not relieve our customers of their own responsibility for checking the suitability of our products for the envisaged purpose.

The information in this document is subject to change without notice and should not be construed as a commitment by the manufacturing or selling entity, or an affiliate. We assume no responsibility for any errors that may appear in this document.

## Technical Assistance

Visit the tech service page at [SigmaAldrich.com/techservice](https://SigmaAldrich.com/techservice).

## Terms and Conditions of Sale

Warranty, use restrictions, and other conditions of sale may be found at [SigmaAldrich.com/terms](https://SigmaAldrich.com/terms).

## Contact Information

For the location of the office nearest you, go to [SigmaAldrich.com/offices](https://SigmaAldrich.com/offices).

The life science business of Merck operates  
as MilliporeSigma in the U.S. and Canada.

Merck, Scepter and Sigma-Aldrich are trademarks of Merck KGaA, Darmstadt, Germany or its affiliates. All other trademarks are the property of their respective owners. Detailed information on trademarks is available via publicly accessible resources.

© 2022-2024 Merck KGaA, Darmstadt, Germany and/or its affiliates. All Rights Reserved.

Document Template 20306518 Ver 6.0

20697673 Ver 2.0, Rev 01AUG2024, AV

