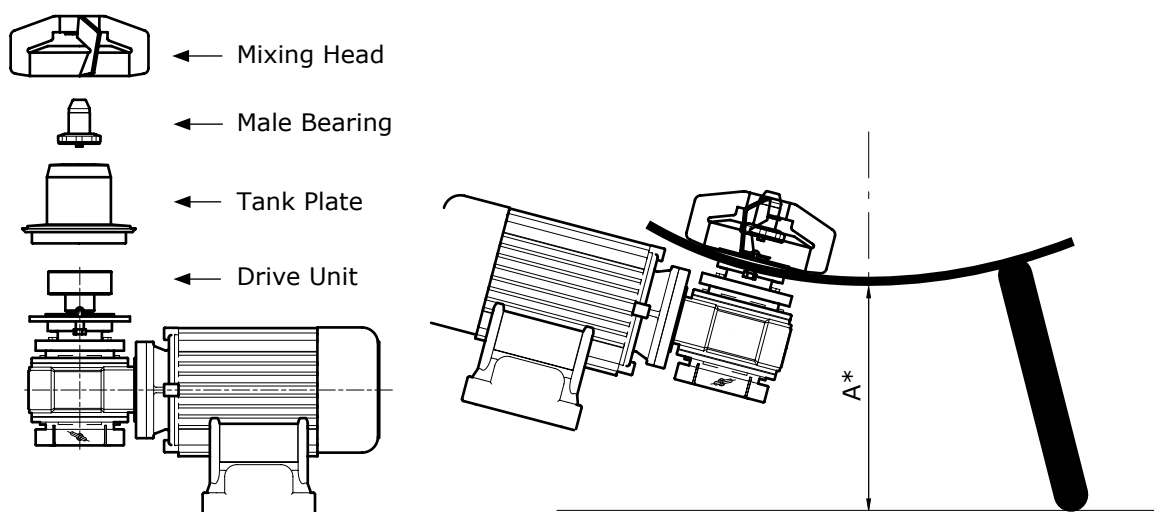


Specification Sheet

# NovAseptic® Mixer, Mixer Assembly, GMP ATEX

## Product Description

The NovAseptic® mixers offer a complete solution for mixing throughout the process line and are designed for a wide variety of mixing applications in the pharmaceutical and biotechnology industries.



## Nominal Dimensions in mm (in.)

Mixer Model	Mixing Head	Male Bearing	Tank Plate	Drive Unit	A*
GMP50 ATEX	AX05/12EP	AX05/24EP	AX05/33	AX05/41-E0-055	260 (10.24)
GMP50 ATEX	AX05/12EP	AX05/24EP	AX05/33	AX05/41-E1-056	320 (12.60)
GMP100 ATEX	AX1/12EP	AX1/24EP	AX1/33	AX1/41-E0-057	260 (10.24)
GMP100 ATEX	AX1/12EP	AX1/24EP	AX1/33	AX1/41-E1-058	320 (12.60)
GMP100 ATEX	AX1/12EP	AX1/24EP	AX1/33	AX1/41-E2-059	360 (14.17)
GMP500 ATEX	AX5/120EP	AX510/24EP	AX5/33	AX5/41-E0-060	270 (10.63)
GMP500 ATEX	AX5/120EP	AX510/24EP	AX5/33	AX5/41-E1-061	330 (12.99)
GMP500 ATEX	AX5/120EP	AX510/24EP	AX5/33	AX5/41-E2-062	370 (14.57)
GMP1000 ATEX	AX10/120EP	AX510/24EP	AX10/33	AX10/41-E0-063	290 (11.42)
GMP1000 ATEX	AX10/120EP	AX510/24EP	AX10/33	AX10/41-E2-064	390 (15.35)
GMP2000 ATEX	AX20/12EP	AX20/24EP	AX20/33	AX20/41-E0-065	350 (13.78)
GMP2000 ATEX	AX20/12EP	AX20/24EP	AX20/33	AX20/41-E2-066	450 (17.72)

\*Note: Minimum distance to dismount the Drive Unit

## Specifications

Mixer Assembly Parts		
	GMP ATEX—Catalogue No.	Specification Sheet—Lit. No.
Mixing Head	AX###/12EP, AX##/120EP	SP1182EN00
Male Bearing	AX#####/24EP	SP1183EN00
Tank Plate	AX###/33	SP1184EN00
Drive Unit	AX###/41-E#-###	SP1185EN00

Mixer Accessory Parts		
	GMP ATEX—Catalogue No.	Specification Sheet—Lit. No.
Mixing Head Attractor	GT##/AW	SP1178EN00
Multi Tool for Mixing Head & Male Bearing	GT##/25	SP1031EN00
Tightening Tool for Male Bearing	GT##/26	SP1032EN00
Welding Tool Tank Plate Heatsink	G94-###	SP1179EN00
NovAseptic® Gauge 1, for Tank Plate, Outer Driving Head Control	G91-###	SP1199EN00
NovAseptic® Gauge 2, for Tank Plate, Mixing Head Control	G92-###	SP1200EN00

Additional Information	
Technical Data	Ex II 1/2 G Ex h IIC T6...T2(*)/T4...T3(**) GaGb 0 °C ≤ Tamb ≤ 40 °C
Ambiant Temperature	0 to 40 °C (32 to 104 °F)
Operating Temperature	5 to 135 °C (41 to 275 °F) Note: The assembled NovAseptic® mixer may have different design temperature and/or pressure limits. The weakest part in the assembled product sets the final permitted design temperature and pressure limits.
Specification Sheet	Further information is available on the Specification Sheet of each NovAseptic® mixer assembly part.
Quality Control	Our quality assurance system guarantees the control and traceability at all stages of the manufacturing
Liquid Viscosity	1 to 800 cP max

\* depends on the inside vessel process fluid temperature

\*\* depends on the mixer size

As the ATEX conformity has been evaluated on the mixer assembly, only the drive unit will be marked with the ATEX marking.

## Technical Assistance

For more information, please visit **SigmaAldrich.com**  
for up-to-date worldwide contact information

