

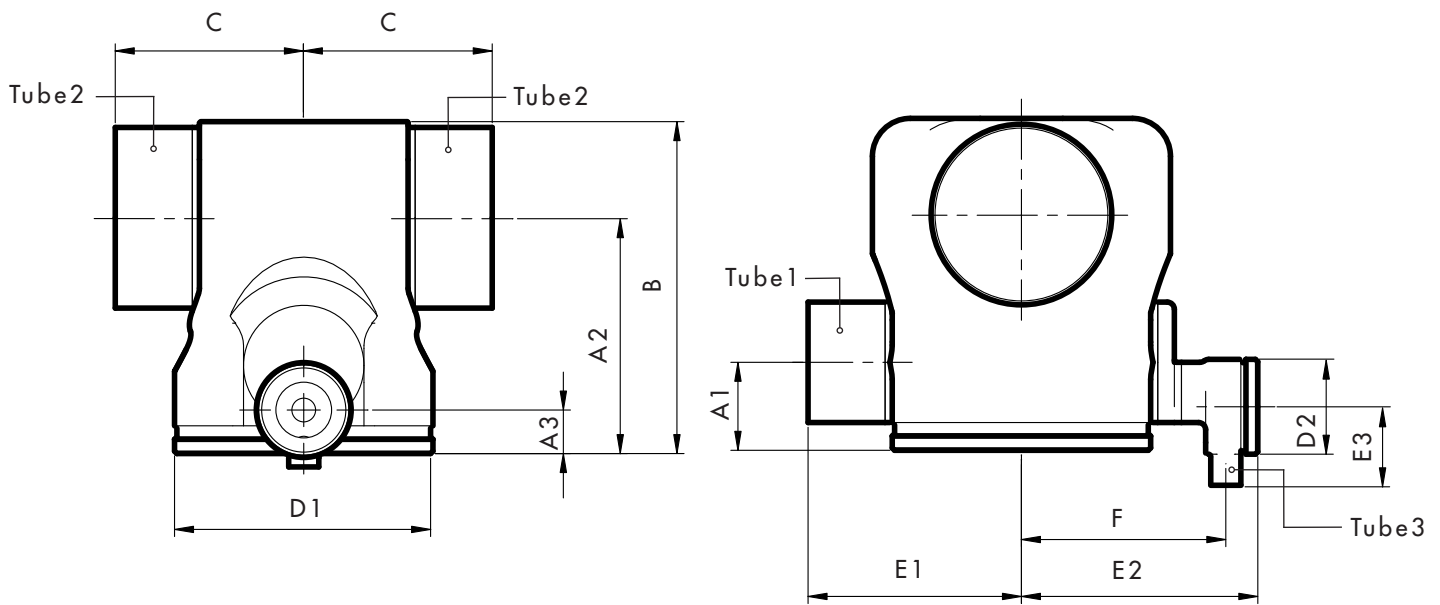
# NovAseptic® VALVE, VALVE BODY, TAKE OFF VALVE, CIP/SIP

Catalogue Numbers:

NU#050/5##-211

## PRODUCT DESCRIPTION

The NovAseptic Valve is specifically designed for aseptic applications and complies with the most stringent cleanability and sterilization requirements. The focus on aseptic design is a significant feature for all valves. The NovAseptic Valve is designed for minimum dead leg, complete drainability and high chemical resistance.



### Catalogue Number Structure

NU	#	#	/	5#	-	2		1		1
Tube Standard NU= US Tube ASTM® A269/270	Size Tube 1	Size Tube 3		Valve House Model		Material Code 2= EN 1.4404 (316L)		Surface Finish 1= Manually Polished		Tube Connection 1= Butt End

### Nominal Dimensions in mm (in.)

Catalogue Number	Tube1	A1	E1	Tube2	A2	B	C	D1*	Tube3	A3	D2*	E2	E3	F
NU050050/510-211	12.7x1.65 (0.5x0.065)	12.4 (0.488)	49.0 (1.929)	25.4x1.65 (1.0x0.065)	30.8 (1.213)	49.0 (1.929)	45.0 (1.772)	TR40x2	12.7x1.65 (0.5x0.065)	12.4 (0.488)	TR40x2	51.5 (2.028)	30.0 (1.181)	37.8 (1.488)
NU050050/515-211	12.7x1.65 (0.5x0.065)	12.4 (0.488)	49.0 (1.929)	38.1x1.65 (1.5x0.065)	37.1 (1.461)	57.0 (2.244)	45.0 (1.772)	TR40x2	12.7x1.65 (0.5x0.065)	12.4 (0.488)	TR40x2	51.5 (2.028)	30.0 (1.181)	37.8 (1.488)
NU050050/520-211	12.7x1.65 (0.5x0.065)	12.4 (0.488)	56.5 (2.224)	50.8x1.65 (2.0x0.065)	43.5 (1.713)	70.0 (2.756)	45.0 (1.772)	TR40x2	12.7x1.65 (0.5x0.065)	12.4 (0.488)	TR40x2	59.0 (2.323)	30.0 (1.181)	45.3 (1.783)

\* Note: Non-standard thread, special to fit NovAseptic Actuators

## Nominal Dimensions in mm (in.)

Catalogue Number	Tube1	A1	E1	Tube2	A2	B	C	D1*	Tube3	A3	D2*	E2	E3	F
NU075050/515-211	19.1x1.65 (0.75x0.065)	18.0 (0.709)	57.5 (2.264)	38.1x1.65 (1.5x0.065)	44.4 (1.748)	64.0 (2.520)	52.5 (2.067)	TR55x2	12.7x1.65 (0.5x0.065)	15.1 (0.594)	TR40x2	63.5 (2.500)	47.0 (1.850)	49.8 (1.961)
NU075050/520-211	19.1x1.65 (0.75x0.065)	18.0 (0.709)	57.5 (2.264)	50.8x1.65 (2.0x0.065)	50.8 (2.000)	77.0 (3.031)	52.5 (2.067)	TR55x2	12.7x1.65 (0.5x0.065)	15.1 (0.594)	TR40x2	63.5 (2.500)	47.0 (1.850)	49.8 (1.961)
NU100050/515-211	25.4x1.65 (1.0x0.065)	24.1 (0.949)	63.5 (2.500)	38.1x1.65 (1.5x0.065)	54.2 (2.134)	74.0 (2.913)	62.5 (2.461)	TR75x2	12.7x1.65 (0.5x0.065)	18.0 (0.709)	TR40x2	72.7 (2.862)	47.0 (1.850)	59.2 (2.331)
NU100050/520-211	25.4x1.65 (1.0x0.065)	24.1 (0.949)	67.5 (2.657)	50.8x1.65 (2.0x0.065)	60.5 (2.382)	87.0 (3.425)	62.5 (2.461)	TR75x2	12.7x1.65 (0.5x0.065)	18.0 (0.709)	TR40x2	72.7 (2.862)	47.0 (1.850)	59.2 (2.331)
NU100050/530-211	25.4x1.65 (1.0x0.065)	24.1 (0.949)	74.5 (2.933)	76.2x1.65 (3.0x0.065)	73.2 (2.882)	112.0 (4.409)	62.5 (2.461)	TR75x2	12.7x1.65 (0.5x0.065)	18.0 (0.709)	TR40x2	72.7 (2.862)	47.0 (1.850)	59.2 (2.331)
NU150050/515-211	38.1x1.65 (1.5x0.065)	30.6 (1.205)	67.5 (2.657)	38.1x1.65 (1.5x0.065)	67.4 (2.654)	88.0 (3.465)	67.5 (2.657)	TR85x2	12.7x1.65 (0.5x0.065)	18.2 (0.717)	TR40x2	87.7 (3.453)	47.0 (1.850)	74.2 (2.921)
NU150050/520-211	38.1x1.65 (1.5x0.065)	30.6 (1.205)	77.5 (3.051)	50.8x1.65 (2.0x0.065)	73.8 (2.906)	100.0 (3.937)	67.5 (2.657)	TR85x2	12.7x1.65 (0.5x0.065)	18.2 (0.717)	TR40x2	87.7 (3.453)	47.0 (1.850)	74.2 (2.921)
NU150050/530-211	38.1x1.65 (1.5x0.065)	30.6 (1.205)	77.5 (3.051)	76.2x1.65 (3.0x0.065)	86.5 (3.406)	127.0 (5.000)	67.5 (2.657)	TR85x2	12.7x1.65 (0.5x0.065)	18.2 (0.717)	TR40x2	87.7 (3.453)	47.0 (1.850)	74.2 (2.921)
NU200050/520-211	50.8x1.65 (2.0x0.065)	37.0 (1.457)	79.5 (3.130)	50.8x1.65 (2.0x0.065)	86.8 (3.417)	116.0 (4.567)	79.0 (3.110)	TR109x2	12.7x1.65 (0.5x0.065)	18.2 (0.717)	TR40x2	99.7 (3.925)	47.0 (1.850)	86.2 (3.394)
NU200050/530-211	50.8x1.65 (2.0x0.065)	37.0 (1.457)	89.5 (3.524)	76.2x1.65 (3.0x0.065)	99.5 (3.917)	140.0 (5.512)	79.0 (3.110)	TR109x2	12.7x1.65 (0.5x0.065)	18.2 (0.717)	TR40x2	99.7 (3.925)	47.0 (1.850)	86.2 (3.394)

\* Note: Non-standard thread, special to fit NovAseptic Actuators

## Specifications

Net Weight (approximate)													
Valve Body	NU050050/			NU075050/		NU100050/			NU150050/			NU200050	
Valve House Model	510	515	520	515	520	515	520	530	515	520	530	520	530
Weight kg (lb)	0.5 (1.1)	0.5 (1.1)	0.6 (1.3)	0.8 (1.8)	0.9 (2.0)	1.5 (3.31)	1.8 (3.97)	2.1 (4.63)	2.0 (4.41)	2.5 (5.51)	2.9 (6.39)	4.0 (8.82)	5.1 (11.2)

Material								
	Bar Stainless Steel in Compliance with				Tubing Stainless Steel in Compliance with			
Material Code	316L		EN 1.4404		TP316L		EN 1.4404	
Technical Requirements	ASME® SA-479		EN 10272		ASTM® A269/270		EN 10217-7/EN 10216-5	

Additional Information	
Surface Roughness	Internal surface (manually polished) Ra ≤ 0.5µm (20µin). External surface Ra ≤ 1.6µm (63µin)
Design Temperature, Valve Body*	-80 to 200 °C (-112 to 392 °F)
Design Pressure, Valve Body*	-1 to 10 bar(g) (-14.5 to 145 psi(g))
Labeling	Each Valve Body is individually labeled for full traceability and heat No. according to Millipore QA routines.
Packaging	All open threaded ends on the Valve Body are protected with plastic covers on delivery and packaged in a closed box.
Quality Control	Millipore Quality Assurance System guarantees the control and traceability at all stages of the manufacturing.
In Compliance with	The NovAseptic Valve is classified in Europe, under SEP (Sound Engineering Practice) for PED Directive 97/23/EC. NovAseptic Valve is in compliance with ASME® BPE standard.
Options	For non-standard NovAseptic Valve Body Options, please contact Millipore for further information.

\*Note: The applied diaphragm and actuator may have different design temperature and/or pressure limits. The weakest component in the assembled product determines the maximum design temperature and pressure limits.



[www.millipore.com/offices](http://www.millipore.com/offices)

Millipore and NovAseptic are registered trademarks of Millipore Corporation.  
 Advancing Life Science Together and M logo are trademarks of Millipore Corporation.  
 ASME is a registered trademark of the American Society of Mechanical Engineers.  
 ASTM is a registered trademark of the American Society for Testing and Materials.  
 Specifications subject to change without notice.  
 Lit. No. SP1143EN00 Rev. A 12/2007.  
 © 2007 Millipore Corporation. All rights reserved.

**ADVANCING LIFE SCIENCE TOGETHER™**  
**Research. Development. Production.**