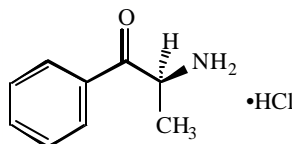


**Product Information**

Cat. No. C3196

**S(-)-CATHINONE HYDROCHLORIDE--DEA SCHEDULE I**  
 **$\alpha$ -AMINOPROPIOPHENONE HYDROCHLORIDE**

Produces amphetamine-like effects; primary psychoactive alkaloid isolated from the leaf of the Khat shrub.

**Mol. Formula:** C<sub>9</sub>H<sub>11</sub>NO•HCl**Mol. Wt.:** 185.65 (anhyd.)**m.p.:** 177-178°C (dec.)**CAS Registry No.:** 71031-15-7**Chemical Name:** S(-)-2-Amino-1-phenyl-1-propanone hydrochloride**Physical Properties:** White hygroscopic solid.  $[\alpha]_D^{22} = -44.14^\circ$  (c = 1.0, water).**Caution:** While no human toxicity data is available for this substance, it should be handled with care. Precautions should be taken to avoid contact by all routes of exposure. RTECS No. UC0419000 (free base).**Storage:** Store desiccated at room temperature.**Solubility:** Soluble in water or ethanol.**Disposal:** Dissolve or mix the compound with a combustible solvent and burn in a chemical incinerator equipped with an afterburner and scrubber. This product is controlled by the Drug Enforcement Administration. Appropriate security must be maintained until the substance is destroyed. Records must be kept which detail the ultimate disposition of the material.**References:**

1. *Merck Index 12th Ed.*, No. 1954.
2. Kalix, P. "Cathinone, a natural amphetamine." *Pharmacol. Toxicol.* **70**, 77-86 (1992).
3. Kalix, P. "Pharmacological properties of the stimulant khat." *Pharmac. Ther.* **48**, 397-416 (1990).
4. Pehek, E.A., Schechter, M.D., Yamamoto, B.K. "Effects of cathinone and amphetamine on the neurochemistry of dopamine in vivo." *Neuropharmacology* **29**, 1171-1176 (1990).

CONTROLLED SUBSTANCE - DEA LICENSE REQUIRED (I)