

## Product Information

**CDK2/Cyclin A2, active, GST tagged, human  
PRECISIO® Kinase  
recombinant, expressed in Sf9 cells**

Catalog Number **C0495**

Storage Temperature  $-70^{\circ}\text{C}$

Synonyms: p33(CDK2)/CCN1, CCNA

### Product Description

CDK2 is a member of the Cyclin-Dependent Kinase family that is ubiquitously expressed. CDK2 is a catalytic subunit of the cyclin-dependent protein kinase complex, whose activity is restricted to the  $G_1/S$  phase, and essential for cell cycle  $G_1/S$  phase transition. CDK2 associates with and is regulated by the regulatory subunits of the complex including Cyclin A or E, CDK inhibitor p21Cip1 (CDKN1A), and p27Kip1 (CDKN1B).<sup>1</sup> CDK2 phosphorylates multiple cellular substrates including SMAD3 and FOXO1. Phosphorylation of FOXO1 leads to its inhibition.<sup>2</sup>

Recombinant full-length human CDK2 and CyclinA2 were co-expressed by baculovirus in Sf9 insect cells using an N-terminal GST tag on both proteins. The CDK2 gene accession number is NM 001798 and the Cyclin A2 gene accession number is NM 001237. It is supplied in 50 mM Tris-HCl, pH 7.5, with 150 mM NaCl, 0.25 mM DTT, 0.1 mM EGTA, 0.1 mM EDTA, 0.1 mM PMSF, and 25% glycerol.

Molecular mass: CDK2 ~58 kDa  
Cyclin A2 ~78 kDa

### Precautions and Disclaimer

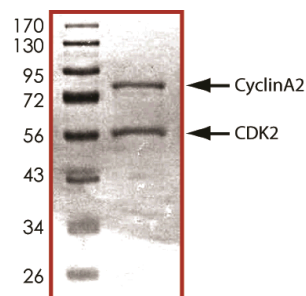
This product is for R&D use only, not for drug, household, or other uses. Please consult the Material Safety Data Sheet for information regarding hazards and safe handling practices.

### Storage/Stability

The product ships on dry ice and storage at  $-70^{\circ}\text{C}$  is recommended. After opening, aliquot into smaller quantities and store at  $-70^{\circ}\text{C}$ . Avoid repeated handling and multiple freeze/thaw cycles.

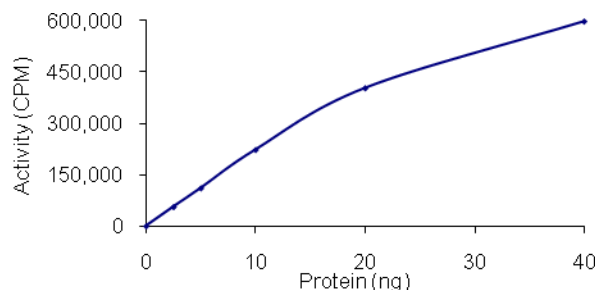
**Figure 1.**

SDS-PAGE Gel of Typical Lot:  
 $\geq 90\%$  (SDS-PAGE, densitometry)



**Figure 2.**

Specific Activity of Typical Lot:  
778–1,052 nmole/min/mg



### Procedure

#### Preparation Instructions

Kinase Assay Buffer – 25 mM MOPS, pH 7.2, 12.5 mM glycerol 2-phosphate, 25 mM  $\text{MgCl}_2$ , 5 mM EGTA, and 2 mM EDTA. Just prior to use, add DTT to a final concentration of 0.25 mM.

Kinase Dilution Buffer – Dilute the Kinase Assay Buffer 5-fold with a 50 ng/ $\mu\text{L}$  BSA solution.

Kinase Solution – Dilute the active CDK2/Cyclin A2 (0.1 µg/µl) with Kinase Dilution Buffer to the desired concentration.

**Note:** The specific activity plot may be used as a guideline (see Figure 2). It is recommended the researcher perform a serial dilution of active CDK2/Cyclin A2 kinase for optimal results

10 mM ATP Stock Solution – Dissolve 55 mg of ATP in 10 ml of Kinase Assay Buffer. Store in 200 µl aliquots at –20 °C.

γ-<sup>32</sup>P-ATP Assay Cocktail (250 µM) – Combine 5.75 ml of Kinase Assay Buffer, 150 µl of 10 mM ATP Stock Solution, 100 µl of γ-<sup>32</sup>P-ATP (1 mCi/100 µl). Store in 1 ml aliquots at –20 °C.

Substrate Solution – Dissolve the substrate (Histone H1) in water at a final concentration of 1 mg/ml.

1% phosphoric acid solution – Dilute 10 ml of concentrated phosphoric acid to a final volume of 1 L with water.

#### Kinase Assay

This assay involves the use of the <sup>32</sup>P radioisotope. All institutional guidelines regarding the use of radioisotopes should be followed.

1. Thaw the active CDK2/Cyclin A2, Kinase Assay Buffer, Substrate Solution, and Kinase Dilution Buffer on ice. The γ-<sup>32</sup>P-ATP Assay Cocktail may be thawed at room temperature.
2. In a pre-cooled microcentrifuge tube, add the following solutions to a volume of 20 µl:
  - 10 µl of Kinase Solution
  - 5 µl of Substrate Solution
  - 5 µl of cold water (4 °C)
3. Set up a blank control as outlined in step 2, substituting 5 µl of cold water (4 °C) for the Substrate Solution.
4. Initiate each reaction with the addition of 5 µl of the γ-<sup>32</sup>P-ATP Assay Cocktail, bringing the final reaction volume to 25 µl. Incubate the mixture in a water bath at 30 °C for 15 minutes.
5. After the 15 minute incubation, stop the reaction by spotting 20 µl of the reaction mixture onto an individually precut strip of phosphocellulose P81 paper.

6. Air dry the precut P81 strip and sequentially wash in the 1% phosphoric acid solution with constant gentle stirring. It is recommended the strips be washed a total of 3 times of ~10 minutes each.
7. Set up a radioactive control to measure the total γ-<sup>32</sup>P-ATP counts introduced into the reaction. Spot 5 µl of the γ-<sup>32</sup>P-ATP Assay Cocktail on a precut P81 strip. Dry the sample for 2 minutes and read the counts. Do not wash this sample.
8. Count the radioactivity on the P81 paper in the presence of scintillation fluid in a scintillation counter.
9. Determine the corrected cpm by subtracting the blank control value (see step 3) from each sample and calculate the kinase specific activity

#### Calculations:

1. Specific Radioactivity (SR) of ATP (cpm/nmole)

$$SR = \frac{\text{cpm of 5 } \mu\text{l of } \gamma\text{-}^{32}\text{P-ATP Assay Cocktail}}{\text{nmole of ATP}}$$

cpm – value from control (step 7)

nmole – 1.25 nmole (5 µl of 250 µM ATP Assay Cocktail)

2. Specific Kinase Activity (SA) (nmole/min/mg)

$$\text{nmole/min/mg} = \frac{\Delta\text{cpm} \times (25/20)}{SR \times E \times T}$$

SR = specific radioactivity of the ATP (cpm/nmole ATP)

Δcpm = cpm of the sample – cpm of the blank (step 3)

25 = total reaction volume

20 = spot volume

T = reaction time (minutes)

E = amount of enzyme (mg)

#### References

1. Levkau, B. et al., Cleavage of p21 (Cip1/Waf1) and p27 (Kip1) mediates apoptosis in endothelial cells through activation of Cdk2: role of a caspase cascade. *Molec. Cell*, **1**, 553-563 (1998).
2. Huang, H. et al., CDK2-dependent phosphorylation of FOXO1 as an apoptotic response to DNA damage. *Science*, **314**, 294-297 (2006).

PRECISIO is a registered trademark of Sigma-Aldrich Co. LLC.

JR,JB,TD,MAM 06/12-1