

Product Information

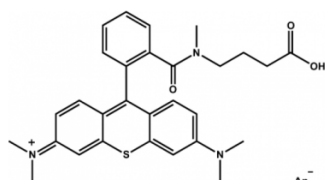
52291 Atto Thio12 NHS ester

Application

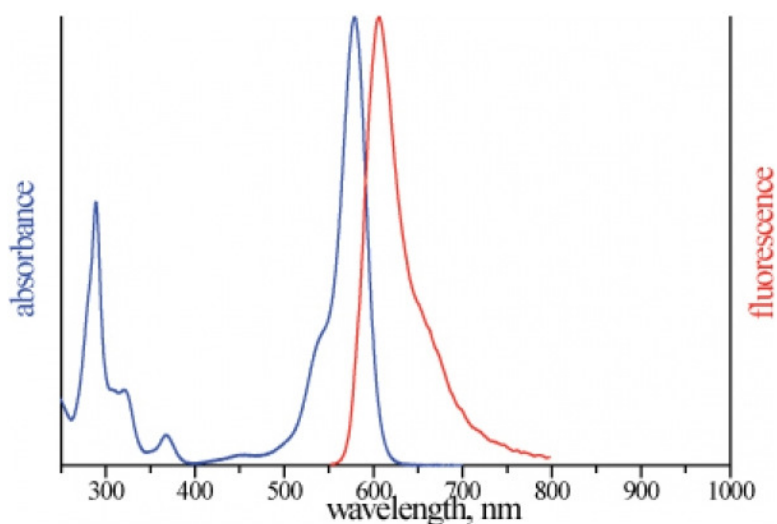
Atto Thio12 NHS ester is a new label closely related to the well-known rhodamines. The dye can be used for labeling of DNA, RNA or proteins. The characteristic feature of the label is high yield of triplet formation. The dye is moderately hydrophilic. Atto Thio12 NHS ester is a cationic dye. After coupling to a substrate the dye carries a net electrical charge of +1.

Product Description

MW	699 g/mol
ϵ_{\max}	$1.1 \times 10^5 \text{ M}^{-1} \text{ cm}^{-1}$
λ_{ex}	579 nm
λ_{fl}	609 nm
η_{fl}	15 %
η_{t}	20%
CF ₂₆₀	0.10
CF ₂₈₀	0.37



Optical data of the carboxy derivative (in water)



Storage: store at $\leq -20^{\circ}\text{C}$. Protect from moisture and light.

Directions for labeling of proteins with Atto Thio12 NHS ester

Dissolve protein in of bicarbonate buffer (0.1 M, preferably of pH 8.3) at 2 mg/ml. Concentrations below 2 mg protein per ml will decrease labeling efficiency. Protein or peptide solutions must be free of any amine-containing substances such as Tris, glycine or ammonium salts. Antibodies in solutions of Tris buffers may be dialyzed against 10-20 mM PBS. The desired pH can be obtained by adding 0.1 ml of 1 M sodium bicarbonate buffer, pH 7.5, for each ml of dialyzed antibody solution.

Dissolve Atto Thio12 NHS ester in amine-free, dry DMF or DMSO at 2 mg/ml (e.g. 1 mg Atto Thio12 NHS in 500 μl).

This solution should always be prepared immediately before conjugation.

As number and position of amine groups vary between different proteins, the optimum of dye/protein ratio also varies. Wherefore we recommend to try out different ratios when labeling a certain protein for the first time.

In general a ratio of 1-2 may be suitable. To obtain a ratio in this range, add a twofold molar excess of reactive dye to the protein solution. For an antibody, add 10 μl of dye solution to 1 ml protein solution.

Incubate the reaction at room temperature for 30 to 60 min under constant or repeated stirring.

Separation of labeled proteins

The labeled protein can be separated from unreacted dye by gel permeation chromatography, e.g. using a SephadexTM G-25, G50 or Bio-GelTM P-10 column. We recommend to use SephadexTM G-25. The column should have a diameter of at least 1 cm and a length of 12 cm. It can be equilibrated with phosphate buffer of pH 7.2 (22 mM) or an other buffer of choice. The same buffer can be used for elution. Usually, the first fluorescent band is the labelled protein, while free dye will elute in a second fluorescent band.

In case you have to work with diluted samples, you may purify the conjugate by extensive dialysis. But this is less efficient and not as fast as purification by gel filtration.

Storage of conjugates

In general, conjugates should be stored under the same conditions used for the unlabeled protein. For storage in solution at 4°C , 2 mM sodium azide can be added as a preservative. Typically, protein conjugates will be stable for several months. For long-term storage, aliquots may be frozen at -20°C to avoid repeated freezing and thawing. Protect from light. If your protein tends to instability please use one of our BioStab solutions specially designed for stabilization of proteins.

After long-term storage of conjugate solutions we recommend to centrifuge in a micro-centrifuge before use. This will remove any aggregates which might have formed.

Directions for oligo-nucleotides with Atto Thio12 NHS ester

Prepare a solution of 0.1 mM solution (e.g. 5 nmol in 50 μl) of amino-modified oligo-nucleotide in carbonate buffer (0.2 M, pH 8-9). Prepare a solution of 5 mg/ml activated label in anhydrous DMF. Add appr. 50 μl of oligo-nucleotide solution to 30 μl of label solution. Incubate the reaction at room temperature for 2 hours under shaking. If longer reaction times are required, the pH value should be diminished to pH 7-7.5.

Separation of labeled oligo-nucleotides

Conjugated oligo-nucleotides can be separated from free dye using gel filtration or reversed phase HPLC.

Precautions and Disclaimer

This product is for R&D use only, not for drug, household, or other uses. Please consult the Material Safety Data Sheet for information regarding hazards and safe handling practices.

Sigma brand products are sold through Sigma-Aldrich, Inc.

Sigma-Aldrich, Inc. warrants that its products conform to the information contained in this and other Sigma-Aldrich publications. Purchaser must determine the suitability of the product(s) for their particular use. Additional terms and conditions may apply. Please see reverse side of the invoice or packing slip.