



### CD20 (L26), IHC-Paraffin Staining Report

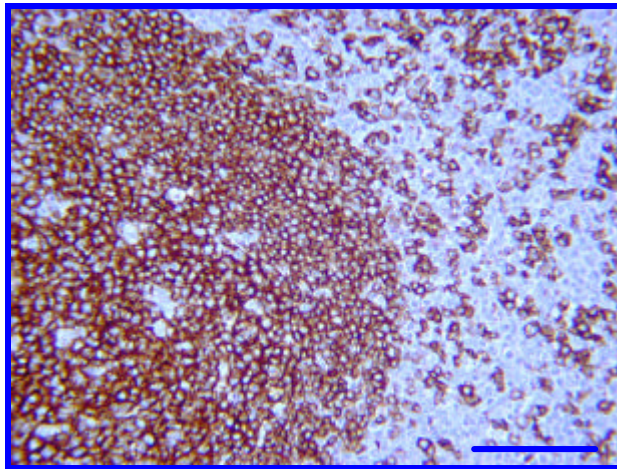
<b>Target Antigen:</b>	CD20 (L26) Human Anti-B Cell Prediluted Antibody.
<b>Catalog or ID #:</b>	IHC2088
<b>Host and Isotype:</b>	Mouse IgG2a
<b>Clone and Lot #:</b>	Clone: L26
<b>Purity and Method:</b>	Protein-A affinity Chromatography
<b>Concentration and Quantity:</b>	Prediluted Antibody
<b>Storage Conditions:</b>	2-4.0°C refrigerated
<b>Species Reactivity:</b>	Most B Lymphocytes. Not expressed in macrophages, neutrophils, red blood cells or platelets.
<b>IHC-Paraffin Fixation Tested:</b>	10% neutral Buffered Formalin
<b>IHC-Paraffin Titer:</b>	N/A
<b>IHC-Paraffin Pretreatment(s):</b>	Heat Induced Epitope Retrieval (HIER). Recommend Citrate Buffer pH 6.0, or EDTA pH 8.0. Also can work with TE Buffer pH 9.0 or without HIER.
<b>IHC-Paraffin Protocol:</b>	<b>IHC-Select, HRP-DAB</b> (Brief Outline): Blocking Reagent for 5 min. Primary Antibody (or Negative Control Reagent) for 10 min. Biotinylated Secondary Antibody for 10 min. Streptavidin-HRP for 10 min. DAB for 10 min. Hematoxylin for 1 min.
<b>Positive Tissue(s):</b>	Tonsil and Lymphatic Nodules.
<b>Subcellular Location(s):</b>	Surface membrane staining of B-Lymphocytes and Follicular Dendritic Reticulocyte cells (not Plasma cells nor Histiocytes.) In non-malignant lymphoid tissue: Germinal Center, Mantle zone, and scatter interfollicular lymphocytes.
<b>Negative Tissue(s):</b>	Normal non-lymphatic tissues.
<b>Comments and References:</b>	Staining is as expected since CD20 (L26) anti-B Cell antibody recognizes a transmembrane protein that has both N and C-terminals located in Cytoplasm. The lower density of positive cells in the mantle zone correlates to the fact that CD20 is associated with regulation of B cell proliferation and differentiation.



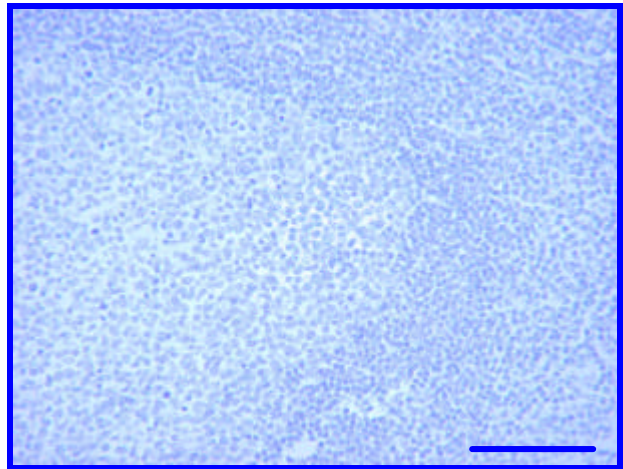
**CHEMICON**  
INTERNATIONAL

**IHC – Paraffin Staining Examples:**

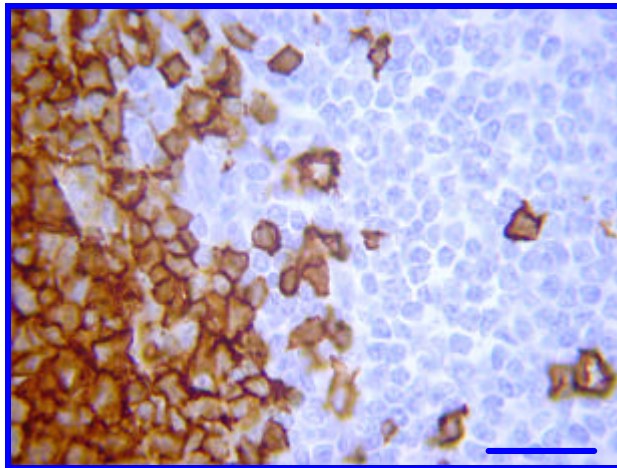
**Pictures of Staining without Epitope Retrieval: Human Tonsil**



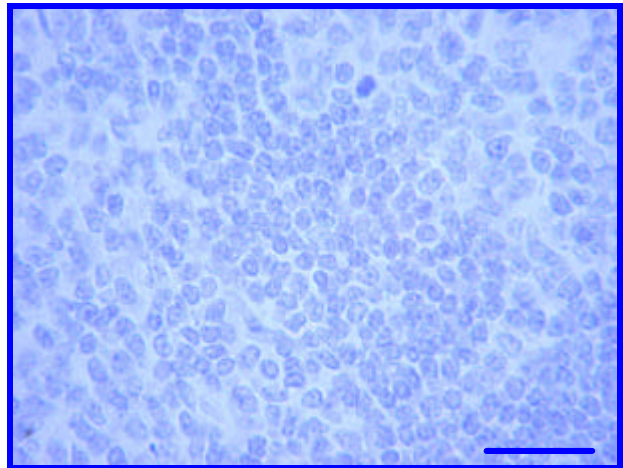
CD20 Pan B cell marker (IHC2088, Clone: L26) staining of Human Tonsil. Without Epitope retrieval, prediluted antibody, IHC-Select Detection with HRP-DAB. B Cells in Germinal Center stain strongly (brown). Bar = 100 $\mu$ m.



Negative Control staining of Germinal Center in Human Tonsil. Without Epitope retrieval, Negative Control Reagent, IHC-Select Detection with HRP-DAB. No background staining is detected. Bar = 100 $\mu$ m.



CD20 Pan B cell marker (IHC2088, Clone: L26) staining of Human Tonsil. Without Epitope retrieval, prediluted antibody, IHC-Select Detection with HRP-DAB. B Cells in Germinal Center stain strongly (brown). Bar = 25 $\mu$ m.



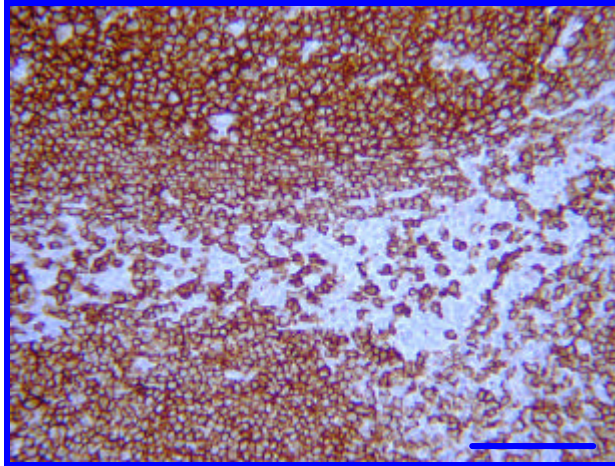
Negative Control staining of Germinal Center in Human Tonsil. Without Epitope retrieval, Negative Control Reagent, IHC-Select Detection with HRP-DAB. No background staining is detected. Bar = 25 $\mu$ m.



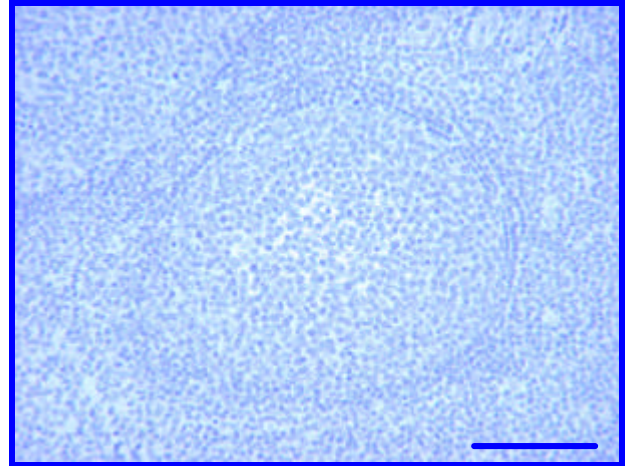
**CHEMICON**  
INTERNATIONAL

**IHC – Paraffin Staining Examples:**

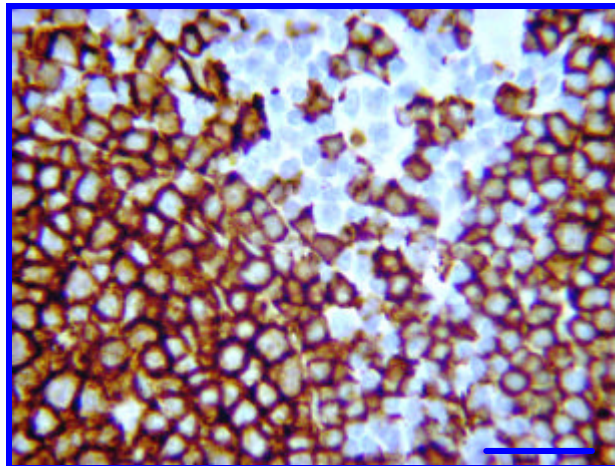
**Pictures of Optimal Staining with Citrate Buffer Epitope Retrieval: Human Tonsil**



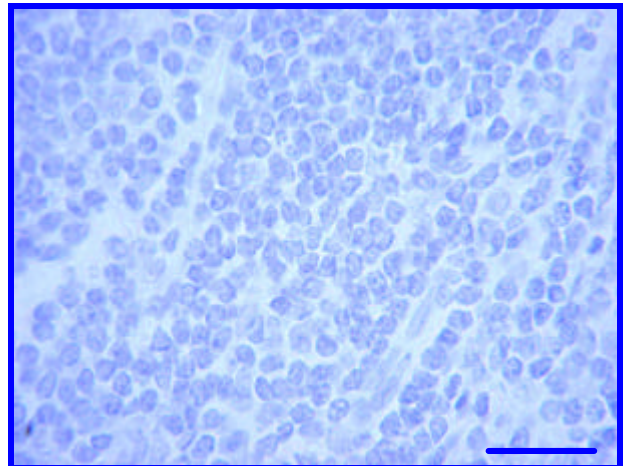
CD20 Pan B cell marker (IHC2088, Clone: L26) staining of Human Tonsil. Citrate Buffer, pH 6.0, prediluted antibody, IHC-Select Detection with HRP-DAB. B Cells in Germinal Center stain strongly (brown). Bar = 100 $\mu$ m.



Negative Control staining of Germinal Center in Human Tonsil. Citrate Buffer, pH 6.0, Negative Control Reagent, IHC-Select Detection with HRP-DAB. No background staining is detected. Bar = 100 $\mu$ m.



CD20 Pan B cell marker (IHC2088, Clone: L26) staining of Human Tonsil. Citrate Buffer, pH 6.0, prediluted antibody, IHC-Select Detection with HRP-DAB. B Cells in Germinal Center stain strongly (brown). Bar = 25 $\mu$ m.



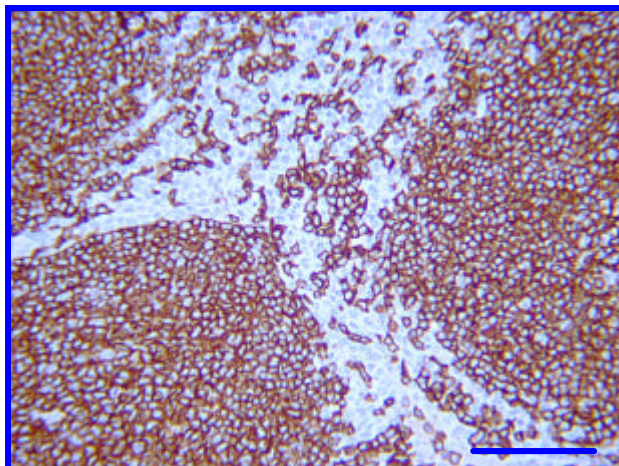
Negative Control staining of Germinal Center in Human Tonsil. Citrate Buffer, pH 6.0, Negative Control Reagent, IHC-Select Detection with HRP-DAB. No background staining is detected. Bar = 25 $\mu$ m.



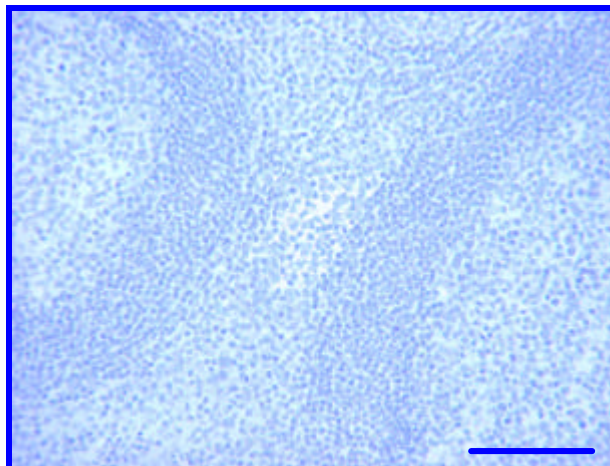
**CHEMICON**  
INTERNATIONAL

**IHC – Paraffin Staining Examples:**

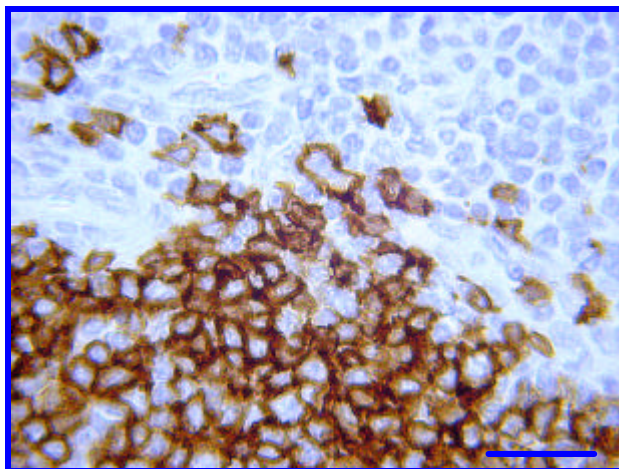
**Pictures of optimal Staining with EDTA Epitope Retrieval: Human Tonsil**



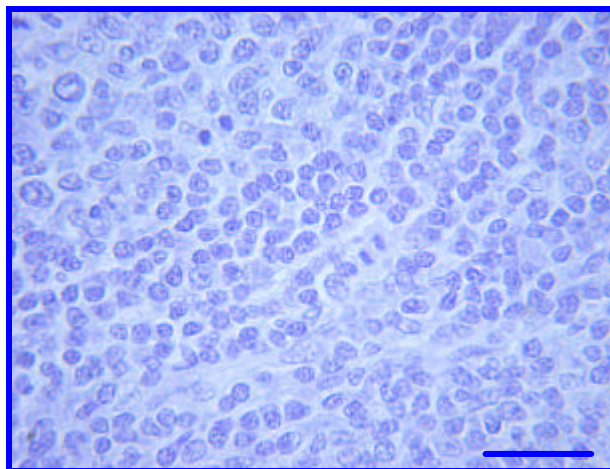
CD20 Pan B cell marker (IHC2088, Clone: L26) staining of Human Tonsil. EDTA, pH 8.0, prediluted antibody, IHC-Select Detection with HRP-DAB. B Cells in Germinal Center stain strongly (brown). Bar = 100 $\mu$ m.



Negative Control staining of Germinal Center in Human Tonsil. EDTA, pH 8.0, Negative Control Reagent, IHC-Select Detection with HRP-DAB. No background staining is detected. Bar = 100 $\mu$ m.



CD20 Pan B cell marker (IHC2088, Clone: L26) staining of Human Tonsil. EDTA, pH 8.0, prediluted antibody, IHC-Select Detection with HRP-DAB. B Cells in Germinal Center stain strongly (brown). Bar = 25 $\mu$ m.



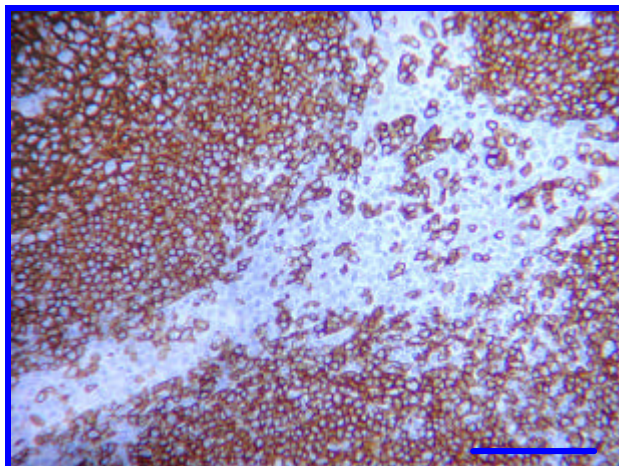
Negative Control staining of Germinal Center in Human Tonsil. EDTA, pH 8.0, Negative Control Reagent, IHC-Select Detection with HRP-DAB. No background staining is detected. Bar = 25 $\mu$ m.



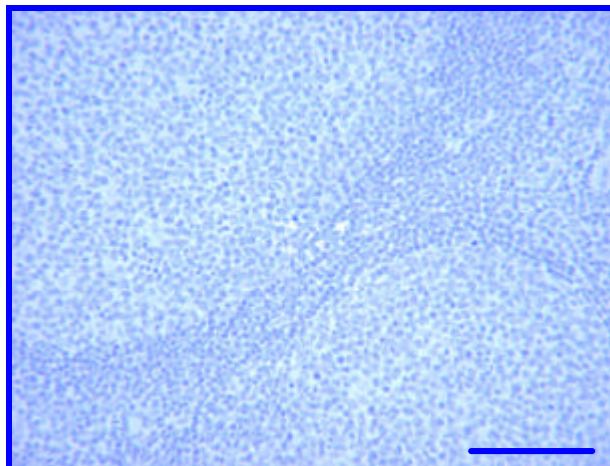
**CHEMICON**  
INTERNATIONAL

**IHC – Paraffin Staining Examples:**

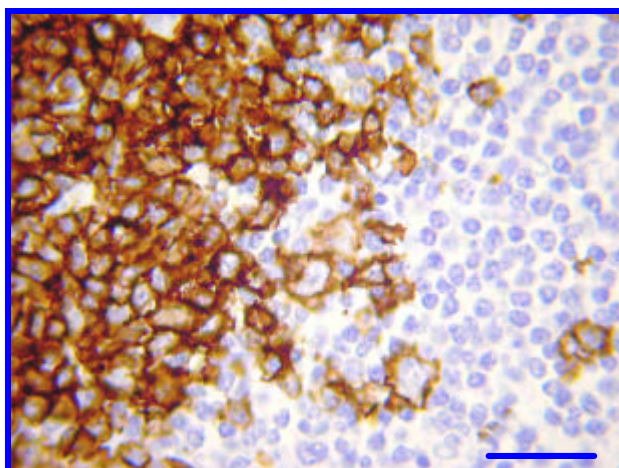
**Pictures of Staining with TE Buffer Epitope Retrieval: Human Tonsil**



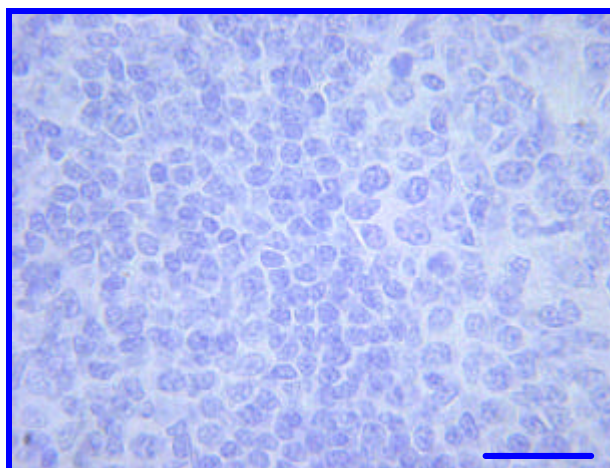
CD20 Pan B cell marker (IHC2088, Clone: L26) staining of Human Tonsil. TE Buffer, pH 9.0, prediluted antibody, IHC-Select Detection with HRP-DAB. B Cells in Germinal Center stain strongly (brown). Bar = 100µm.



Negative Control staining of Germinal Center in Human Tonsil. TE Buffer, pH 9.0, Negative Control Reagent, IHC-Select Detection with HRP-DAB. No background staining is detected. Bar = 100µm.



CD20 Pan B cell marker (IHC2088, Clone: L26) staining of Human Tonsil. TE Buffer, pH 9.0 Pretreatment, prediluted antibody, IHC-Select Detection with HRP-DAB. B Cells in Germinal Center stain strongly (brown). Bar = 25µm.



Negative Control staining of Germinal Center in Human Tonsil. TE Buffer, pH 9.0 Pretreatment, Negative Control Reagent, IHC-Select Detection with HRP-DAB. No background staining is detected. Bar = 25µm.