

Product Information

PP2C γ , active, GST-tagged, human recombinant, expressed in *Sf9* cells

Catalog Number **SRP5334**
Storage Temperature -70°C

Synonyms: PP2C-GAMMA, PP2CG, PPM1G, PPP2CG, MGC1675, MGC2870

Product Description

PP2C γ is a member of the PP2C family of Ser/Thr protein phosphatases, which are known to be negative regulators of cell stress response pathways. PP2C γ is found to be responsible for the dephosphorylation of pre-mRNA splicing factors, which is important for the formation of functional spliceosome.¹ PP2C γ is highly expressed in testis, skeletal muscle, and heart.² PP2C γ also plays a main role in regulating cell cycle progression.

Recombinant full-length human PP2C γ was expressed by baculovirus in *Sf9* insect cells using an N-terminal GST-tag. The gene accession number is NM_177983. It is supplied in 50 mM Tris-HCl, pH 7.5, 150 mM NaCl, 10 mM glutathione, 0.1 mM EDTA, 0.25 mM DTT, 0.1 mM PMSF, and 25% glycerol.

Molecular mass: ~105 kDa

Precautions and Disclaimer

This product is for R&D use only, not for drug, household, or other uses. Please consult the Material Safety Data Sheet for information regarding hazards and safe handling practices.

Storage/Stability

The product ships on dry ice and storage at -70°C is recommended. After opening, aliquot into smaller quantities and store at -70°C . Avoid repeated handling and multiple freeze/thaw cycles.

Figure 1.

SDS-PAGE Gel of Typical Lot:
 $\geq 70\%$ (SDS-PAGE, densitometry)

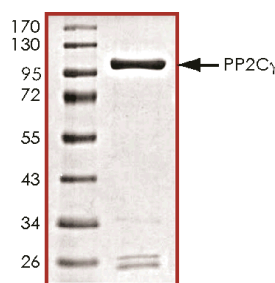
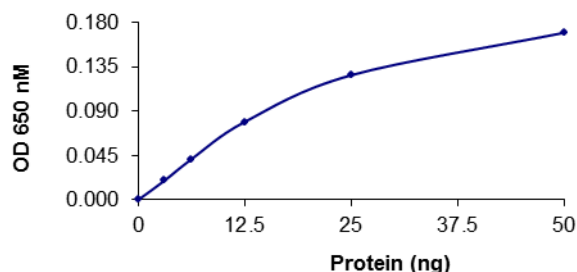


Figure 2.

Specific Activity of Typical Lot:
1,920–2,880 nmole/min/mg



Phosphatase activity was determined with a spectrophotometric assay procedure.

References

1. Murray, M.V. et al., The type 2C Ser/Thr phosphatase PP2C-gamma is a pre-mRNA splicing factor. *Genes Dev.*, **13**, 87-97 (1999).
2. Travis, S.M. et al., PP2C-gamma: a human protein phosphatase with a unique acidic domain. *FEBS Lett.*, **412**, 415-419 (1997).

RC,MAM 12/12-1