

## Product Information

**MNK2, active, GST-tagged, human  
PRECISIO® Kinase  
recombinant, expressed in Sf9 cells**

Catalog Number **M9322**  
Lot Number 080M0846  
Storage Temperature  $-70^{\circ}\text{C}$

Synonyms: MKNK2, GPRK7

### Product Description

MNK2 (MAP kinase-interacting kinase 2) contains a conserved C-terminal ERK-interacting domain, a catalytic domain with homology to the calcium/calmodulin-dependent family of kinases, and putative MAP kinase phosphorylation sites located within the T loop of the kinase domain. MNK2 binds tightly to the growth factor-regulated MAP kinases, ERK1 and ERK2. ERK and p38 phosphorylate MNK2, which stimulates its *in vitro* kinase activity toward a substrate, eukaryotic initiation factor-4E (eIF-4E).<sup>1</sup> A yeast two-hybrid screen showed the MNK2 protein interacted with the ligand-binding domain of estrogen receptor beta (ERbeta).<sup>2</sup>

This recombinant product was expressed by baculovirus in Sf9 insect cells using an N-terminal GST-tag. The gene accession number is NM 017572. It is supplied in 50 mM Tris-HCl, pH 7.5, with 150 mM NaCl, 0.25 mM DTT, 0.1 mM EGTA, 0.1 mM EDTA, 0.1 mM PMSF, and 25% glycerol.

Molecular mass: ~74 kDa

Purity:  $\geq 70\%$  (SDS-PAGE, see Figure 1)

Specific Activity: 81–109 nmole/min/mg (see Figure 2)

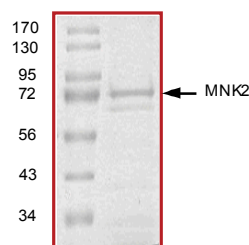
### Precautions and Disclaimer

This product is for R&D use only, not for drug, household, or other uses. Please consult the Material Safety Data Sheet for information regarding hazards and safe handling practices.

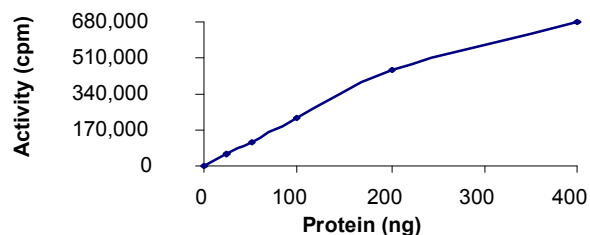
### Storage/Stability

The product ships on dry ice and storage at  $-70^{\circ}\text{C}$  is recommended. After opening, aliquot into smaller quantities and store at  $-70^{\circ}\text{C}$ . Avoid repeated handling and multiple freeze/thaw cycles.

**Figure 1.**  
SDS-PAGE Gel of Lot Number 080M0846:  
>70% (densitometry)



**Figure 2.**  
Specific Activity of Lot Number 080M0846:  
93 nmole/min/mg



### Procedure

#### Preparation Instructions

Kinase Assay Buffer – 25 mM MOPS, pH 7.2, 12.5 mM glycerol 2-phosphate, 25 mM  $\text{MgCl}_2$ , 5 mM EGTA, and 2 mM EDTA. Just prior to use, add DTT to a final concentration of 0.25 mM.

Kinase Dilution Buffer – Dilute the Kinase Assay Buffer 5-fold with a 50 ng/ $\mu\text{l}$  BSA solution.

Kinase Solution – Dilute the active MNK2 (0.1 µg/µl) with Kinase Dilution Buffer to the desired concentration. **Note:** The lot-specific specific activity plot may be used as a guideline (see Figure 2). It is recommended that the researcher perform a serial dilution of active MNK2 kinase for optimal results

10 mM ATP Stock Solution – Dissolve 55 mg of ATP in 10 ml of Kinase Assay Buffer. Store in 200 µl aliquots at –20 °C.

γ-<sup>32</sup>P-ATP Assay Cocktail (250 µM) – Combine 5.75 ml of Kinase Assay Buffer, 150 µl of 10 mM ATP Stock Solution, 100 µl of γ-<sup>32</sup>P-ATP (1 mCi/100 µl). Store in 1 ml aliquots at –20 °C.

Substrate Solution – Dissolve the Myelin basic protein (MBP) in water at a final concentration of 1 mg/ml.

1% phosphoric acid solution – Dilute 10 ml of concentrated phosphoric acid to a final volume of 1 L with water.

#### Kinase Assay

This assay involves the use of the <sup>32</sup>P radioisotope. All institutional guidelines regarding the use of radioisotopes should be followed.

1. Thaw the Active MNK2, Kinase Assay Buffer, Substrate Solution, and Kinase Dilution Buffer on ice. The γ-<sup>32</sup>P-ATP Assay Cocktail may be thawed at room temperature.
2. In a pre-cooled microcentrifuge tube, add the following solutions to a volume of 20 µl:
  - 10 µl of Kinase Solution
  - 5 µl of Substrate Solution
  - 5 µl of cold water (4 °C)
3. Set up a blank control as outlined in step 2, substituting 5 µl of cold water (4 °C) for the Substrate Solution.
4. Initiate each reaction with the addition of 5 µl of the γ-<sup>32</sup>P-ATP Assay Cocktail, bringing the final reaction volume to 25 µl. Incubate the mixture in a water bath at 30 °C for 15 minutes.
5. After the 15 minute incubation, stop the reaction by spotting 20 µl of the reaction mixture onto an individually precut strip of phosphocellulose P81 paper.

6. Air dry the precut P81 strip and sequentially wash in the 1% phosphoric acid solution with constant gentle stirring. It is recommended the strips be washed a total of 3 times of ~10 minutes each.
7. Set up a radioactive control to measure the total γ-<sup>32</sup>P-ATP counts introduced into the reaction. Spot 5 µl of the γ-<sup>32</sup>P-ATP Assay Cocktail on a precut P81 strip. Dry the sample for 2 minutes and read the counts. Do not wash this sample.
8. Count the radioactivity on the P81 paper in the presence of scintillation fluid in a scintillation counter.
9. Determine the corrected cpm by subtracting the blank control value (see step 3) from each sample and calculate the kinase specific activity

#### Calculations:

1. Specific Radioactivity (SR) of ATP (cpm/nmole)

$$SR = \frac{\text{cpm of 5 } \mu\text{l of } \gamma\text{-}^{32}\text{P-ATP Assay Cocktail}}{\text{nmole of ATP}}$$

cpm – value from control (step 7)

nmole – 1.25 nmole (5 µl of 250 µM ATP Assay Cocktail)

2. Specific Kinase Activity (SA) (nmole/min/mg)

$$\text{nmole/min/mg} = \frac{\Delta\text{cpm} \times (25/20)}{SR \times E \times T}$$

SR = specific radioactivity of the ATP (cpm/nmole ATP)

Δcpm = cpm of the sample – cpm of the blank (step 3)

25 = total reaction volume

20 = spot volume

T = reaction time (minutes)

E = amount of enzyme (mg)

#### References

1. Waskiewicz, A.J. et al., EMBO J., **16**(8), 1909-20 (1997).
2. Slentz-Kesler, K. et al., Genomics, **69**(1), 63-71 (2000).

PRECISIO is a registered trademark of Sigma-Aldrich® Biotechnology LP and Sigma-Aldrich Co.

TD,MAM 09/10-1

Sigma brand products are sold through Sigma-Aldrich, Inc.

Sigma-Aldrich, Inc. warrants that its products conform to the information contained in this and other Sigma-Aldrich publications. Purchaser must determine the suitability of the product(s) for their particular use. Additional terms and conditions may apply. Please see reverse side of the invoice or packing slip.