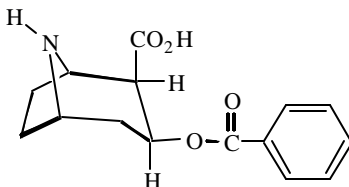


Product Information

Cat. No. B-142

BENZOYLNORECGONINE

Cocaine metabolite.

Mol. Formula: C₁₅H₁₇NO₄**Mol. Wt.:** 275.30 (anhyd.)**m.p.:** 226-228°C**CAS Registry No.:** 41889-45-6**Chemical Name:** [1R-(exo,exo)]-3-(Benzyloxy)-8-azabicyclo[3.2.1]octane-2β-carboxylic acid**Physical Properties:** White solid. $[\alpha]_D^{20} = -46.2^\circ$ (c = 1.2, water).**Caution:** The pharmacology of this compound is incompletely characterized and due care should be exercised in its use. Avoid skin contact, ingestion or inhalation.**Storage:** Store tightly sealed at -20°C.**Solubility:** Soluble in ethanol; insoluble in water.**Disposal:** Dissolve or mix the compound with a combustible solvent and burn in a chemical incinerator equipped with an afterburner and scrubber. This product is controlled by the Drug Enforcement Administration. Appropriate security must be maintained until the substance is destroyed. Records must be kept which detail the ultimate disposition of the material.**References:**

1. Sandberg, J.A., Olsen, G.D. "Cocaine pharmacokinetics in the pregnant guinea pig." *J. Pharmacol. Exp. Ther.* **258**, 477-482 (1991).
2. Sandberg, J.A., Olsen, G.D. "Microassay for the simultaneous determination of cocaine, norcocaine, benzoylecgonine, and benzoynorecgonine by high-performance liquid chromatography." *J. Chromatogr.* **525**, 113-121 (1990).
3. Mule, S.J., Casella, G.A., Misra, A.L. "Intracellular disposition of [³H]-cocaine, [³H]-norcocaine, [³H]-benzoylecgonine and [³H]-benzoynorecgonine in the brain of rats." *Life Sci.* **19**, 1585-1596 (1976).

CONTROLLED SUBSTANCE - DEA LICENSE REQUIRED (II)

Rev. 1/96

Sigma-RBI brand products are sold through Sigma-Aldrich, Inc.

Sigma-Aldrich, Inc. warrants that its products conform to the information contained in this and other Sigma-Aldrich publications. Purchaser must determine the suitability of the product(s) for their particular use. Additional terms and conditions may apply.

Please see reverse side of the invoice or packing slip.