

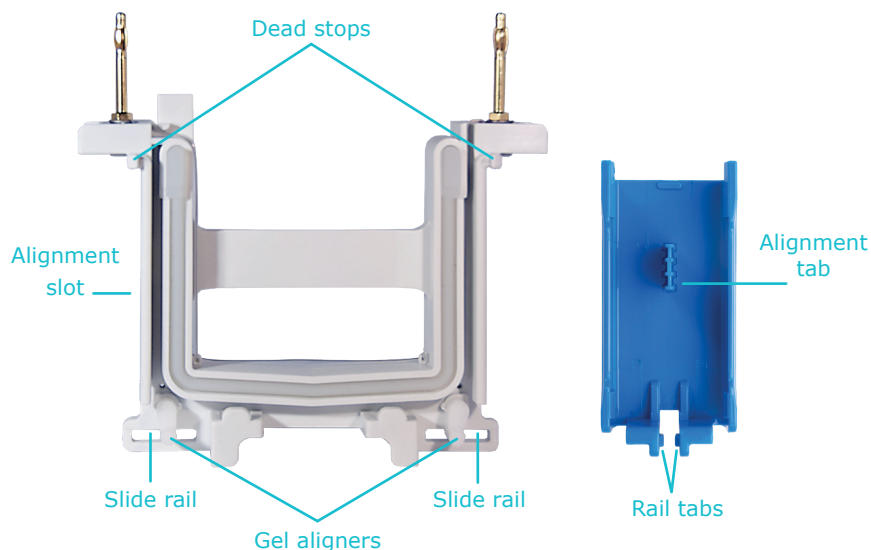
## User Guide

# mPAGE® Electrode Core Clamp Replacement

ECCL2

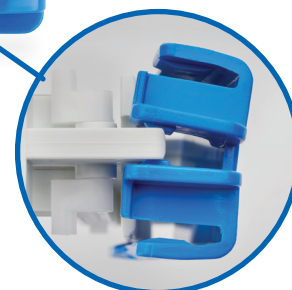
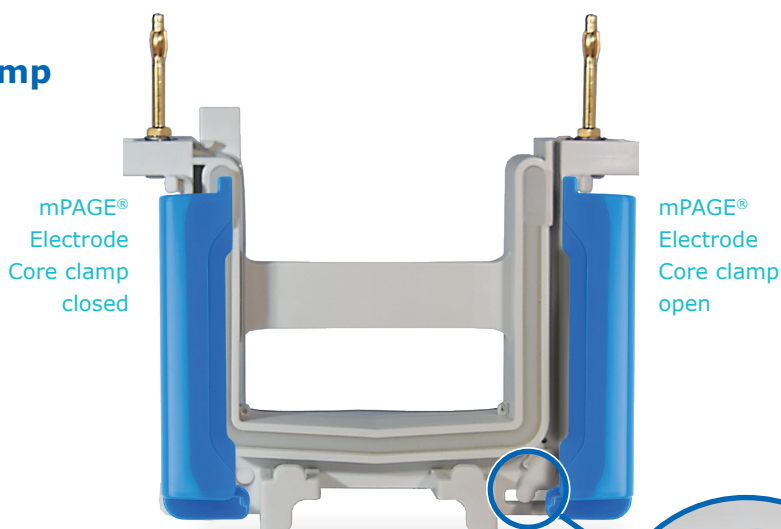
## Introduction

The mPAGE® Electrode Core features replaceable core clamps, mitigating the need to replace the entire mPAGE® Electrode Core assembly.



## Removing a Defective mPAGE® Electrode Core Clamp

1. Orient the mPAGE® Electrode Core so the bottom portion is facing up.
2. Open the defective core clamp, ensuring the opposite core clamp is in the closed position.
3. Grasping the open core clamp where the rail tabs engage with the mPAGE® Electrode Core slide rail, twist until one of the rail tabs disengages from the mPAGE® Electrode Core. Pull backward to disengage the second rail tab.



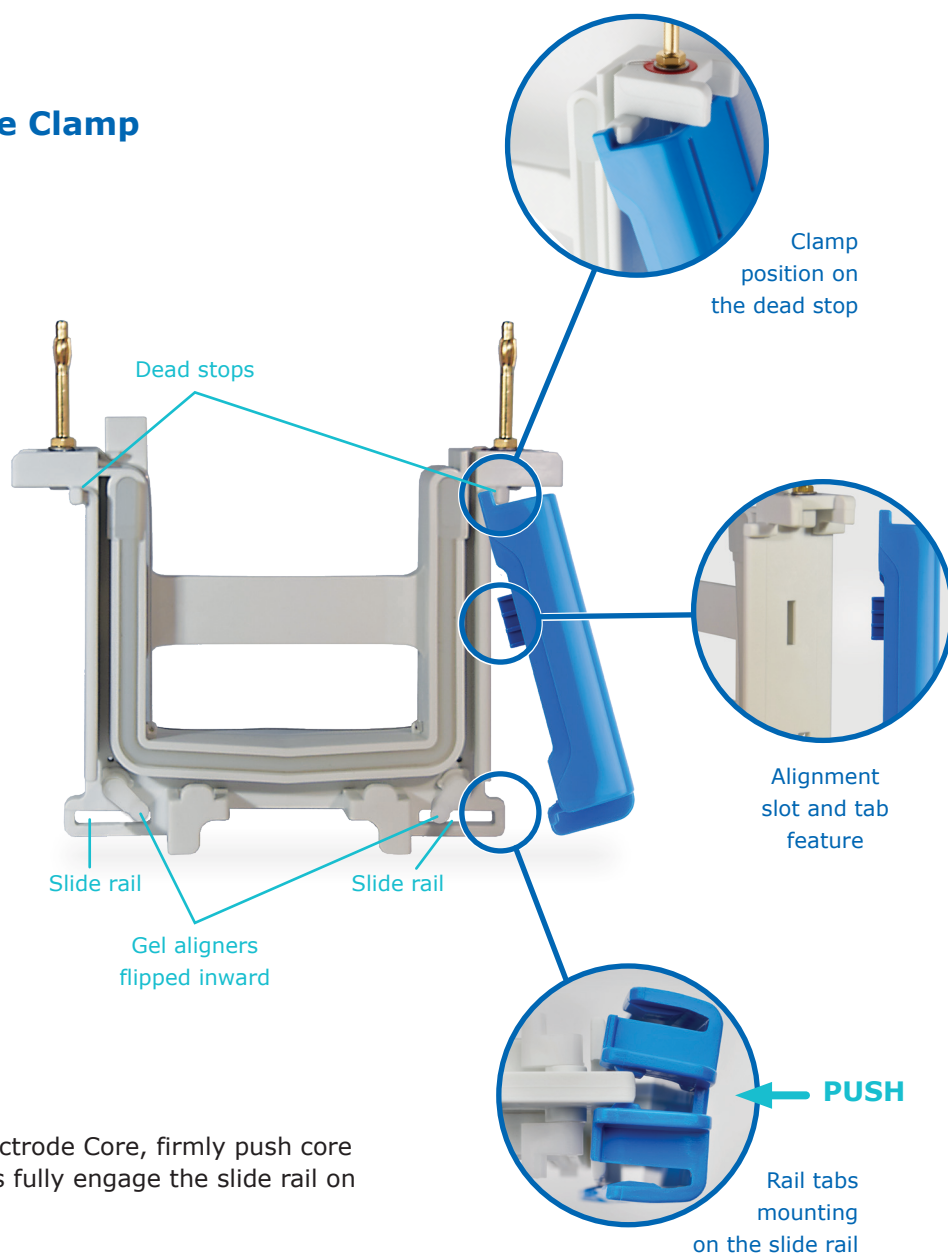
View from bottom

## Installing a New mPAGE® Electrode Core Clamp

1. Position the gel aligners on the mPAGE® Electrode Core toward the core gasket.
2. Place the raised tab of the replacement core clamp behind the mPAGE® Electrode Core dead stop.
3. Align the alignment tab in the center of the core clamp with the alignment slot on the mPAGE® Electrode Core.

The rail tabs on the bottom of the core clamp should align with the slide rail on the bottom of the mPAGE® Electrode Core.

4. While holding the mPAGE® Electrode Core, firmly push core clamp rail tabs until both sides fully engage the slide rail on the mPAGE® Electrode Core.



## Technical Assistance

If you need assistance, visit the tech service page on our website at [SigmaAldrich.com/techservice](https://SigmaAldrich.com/techservice).

Merck, Millipore, mPAGE and Sigma-Aldrich are trademarks of Merck KGaA, Darmstadt, Germany or its affiliates. All other trademarks are the property of their respective owners. Detailed information on trademarks is available via publicly accessible resources.  
© 2022 Merck KGaA, Darmstadt, Germany and/or its affiliates. All Rights Reserved.

The life science business of Merck operates as MilliporeSigma in the U.S. and Canada.

**MERCK**