

YUMM1.7D5 Mouse Melanoma Cell Line

Cancer Cell Line

Cat. # SCC228

FOR RESEARCH USE ONLY.
NOT FOR USE IN DIAGNOSTIC PROCEDURES.
NOT FOR HUMAN OR ANIMAL CONSUMPTION.
THIS PRODUCT CONTAINS GENETICALLY MODIFIED ORGANISMS

Pack size: $\geq 1 \times 10^6$

viable cells/vial

Store in liquid nitrogen



Data Sheet

page 1 of 3

Background

The great promise of immune-based therapies in cancer and recent progress in successful application of these approaches has brought to the fore the necessity of immune-competent models to evaluate immune system responses to cancer cells. Immunocompetent genetically-engineered mouse models harboring discrete genetic drivers of melanoma are essential for studying potential immunotherapies but are limited by the need to maintain colonies of multiple genotypes necessary to generate mouse models with appropriate genetic backgrounds.

The YUMM1.7D5 mouse melanoma cell line is a diploid clone of the YUMM1.7 cell line, developed as an immunocompetent cell line that recapitulates genetic drivers found in a significant proportion of human melanomas.¹ The diploid genotype of YUMM1.7D5 cells greatly enhances efficiency of CRISPR-based screens with higher frequency of biallelic knockout compared to tetraploid cells. YUMM1.7D5 is syngeneic with the immunocompetent C57/B1/6 mouse background, retaining genetic markers of the *Braf/Pten* mouse model in which melanoma tumors develop with short latency.² The genetic tractability of the YUMM1.7D5 mouse melanoma cell line is especially suited for evaluation of potential immunotherapies and represents a valuable tool for tumor immunology and cancer biology.

Source

The YUMM1.7D5 mouse melanoma cell line is a diploid clone derived from the YUMM1.7 cell line, which originated from a 4-hydroxytamoxifen-induced melanoma tumor in a male C57/B1/6 mouse into which mutations from the *Braf/Pten* genetically-engineered mouse model had been introduced via backcrossing. The YUMM1.7D5 cell line harbors the *Braf* V600E mutation and is homozygous negative for wild-type *Pten* and *Cdkn2*.¹

Storage and Handling

YUMM1.7D5 mouse melanoma cell line should be stored in liquid nitrogen. The cells can be cultured for at least 10 passages after initial thawing without significantly affecting the cell marker expression and functionality.

Quality Control Testing

- Each vial contains $\geq 1 \times 10^6$ viable cells.
- Cells are tested negative for infectious diseases by a Mouse Essential CLEAR panel by Charles River Animal Diagnostic Services.
- Cells are verified to be of mouse origin and negative for inter-species contamination from rat, chinese hamster, Golden Syrian hamster, human and non-human primate (NHP) as assessed by a Contamination CLEAR panel by Charles River Animal Diagnostic Services.
- Cells are negative for mycoplasma contamination.

Representative Data

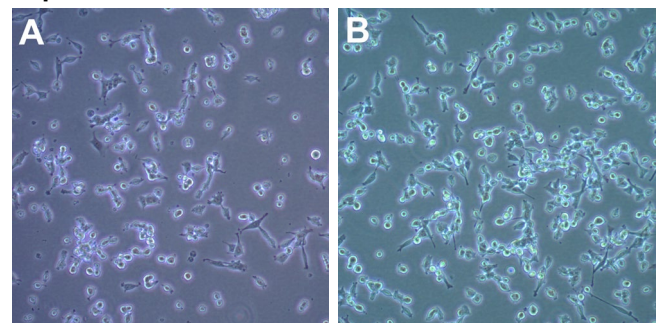


Figure 1. YUMM1.7D5 cells one (A) and two (B) days after thawing in a T75 flask.

References

1. Meeth K et al. (2016) The YUMM lines: a series of congenic mouse melanoma cell lines with defined genetic alterations. *Pigment Cell Melanoma Res* 29(5): 590-597.
2. Dankort D et al. (2009) *Braf*(V600E) cooperates with *Pten* loss to induce metastatic melanoma. *Nat Genet.* 41(5): 544-552.

Please visit www.millipore.com for additional product information and references.

Submit your published journal article and credit toward future purchases. Visit www.millipore.com/publicationrewards to learn more!

Protocols

Thawing Cells

1. Do not thaw the cells until the recommended medium is on hand. Cells can grow on normal tissue cultureware surfaces without any additional coating.
YUMM1.7D5 Expansion Medium: Cells are thawed and expanded in DMEM/F12 medium (Cat. No.DF-042-B) supplemented with 10% FBS (Cat. No. ES-009-B) and 1X non-essential amino acids (Cat. No. TMS-001-C).
2. Remove the vial of frozen YUMM1.7D5 cells from liquid nitrogen and incubate in a 37°C water bath. Closely monitor until the cells are completely thawed. Maximum cell viability is dependent on the rapid and complete thawing of frozen cells.
IMPORTANT: Do not vortex the cells.
3. As soon as the cells are completely thawed, disinfect the outside of the vial with 70% ethanol. Proceed immediately to the next step.
4. In a laminar flow hood, use a 1 or 2 mL pipette to transfer the cells to a sterile 15 mL conical tube. Be careful not to introduce any bubbles during the transfer process.
5. Using a 10 mL pipette, slowly add dropwise 9 mL of YUMM1.7D5 Expansion Medium (Step 1 above) to the 15 mL conical tube.
IMPORTANT: Do not add the entire volume of media all at once to the cells. This may result in decreased cell viability due to osmotic shock.
6. Gently mix the cell suspension by slowly pipetting up and down twice. Be careful not to introduce any bubbles.
IMPORTANT: Do not vortex the cells.
7. Centrifuge the tube at 300 x g for 2-3 minutes to pellet the cells.
8. Decant as much of the supernatant as possible. Steps 5-8 are necessary to remove residual cryopreservative (DMSO).
9. Resuspend the cells in 15 mL of YUMM1.7D5 Expansion Medium.
10. Transfer the cell mixture to a T75 tissue culture flask.
11. Incubate the cells at 37°C in a humidified incubator with 5% CO₂.

Subculturing Cells

Note: Cells form a confluent monolayer that easily detach and may be difficult to resuspend in liquid culture.

1. Carefully remove the medium from the T75 tissue culture flask containing the confluent layer of YUMM1.7D5 cells.
2. Rinse the flask with 10 mL 1X PBS. Aspirate after the rinse.
3. Apply 5-7 mL of Accutase or trypsin-EDTA solution and incubate in a 37°C incubator for 3-5 minutes.
4. Inspect the flask and ensure the complete detachment of cells by gently tapping the side of the flask with the palm of your hand.
5. Add 5-7 mL of YUMM1.7D5 Expansion Medium to the plate.
6. Gently rotate the flask to mix the cell suspension. Transfer the dissociated cells to a 15 mL conical tube.
7. Centrifuge the tube at 300 x g for 3-5 minutes to pellet the cells.
8. Discard the supernatant, then loosen the cell pellet by tapping the tip of the tube with a finger.
9. Apply 2-5 mL of YUMM1.7D5 Expansion Medium to the conical tube and resuspend the cells thoroughly.
IMPORTANT: Do not vortex the cells.
10. Count the number of cells using a hemocytometer.
11. Plate the cells to the desired density. Typical split ratio is 1:6.

Cryopreservation of Cells

YUMM1.7D5 Mouse Melanoma Cell Line may be frozen in the expansion medium plus 10% DMSO using a Nalgene slow freeze Mr. Frosty container.

ACADEMIC USE AGREEMENT
(subject to local law)

THIS PRODUCT MAY ONLY BE USED BY INDIVIDUALS EMPLOYED BY AN ACADEMIC INSTITUTION AND IS INTENDED SOLELY TO BE USED FOR ACADEMIC RESEARCH, WHICH IS FURTHER DEFINED BELOW. BY OPENING THIS PRODUCT, YOU (“PURCHASER”) HEREBY REPRESENT THAT YOU HAVE THE RIGHT AND AUTHORITY TO LEGALLY BIND YOURSELF AND/OR YOUR EMPLOYER INSTITUTION, AS APPLICABLE, AND CONSENT TO BE LEGALLY BOUND BY THE TERMS OF THIS ACADEMIC USE AGREEMENT. IF YOU DO NOT AGREE TO COMPLY WITH THESE TERMS, YOU MAY NOT OPEN OR USE THE PRODUCT AND YOU MUST CALL MILLIPORESIGMA (“SELLER”) CUSTOMER SERVICE (1-800-645-5476) TO ARRANGE TO RETURN THE PRODUCT FOR A REFUND.

“Product” means YUMM1.7D5 Mouse Melanoma Cell Line (SCC228)

“Academic Research” means any internal *in vitro* research use by individuals employed by an academic institution. Academic Research specifically excludes the following uses of whatever kind or nature:

- Re-engineering or copying the Product
- Making derivatives, modifications, or functional equivalents of the Product
- Obtaining patents or other intellectual property rights claiming use of the Product
- Using the Product in the development, testing, or manufacture of a Commercial Product
- Using the Product as a component of a Commercial Product
- Reselling or licensing the Product
- Using the Product in clinical or therapeutic applications including producing materials for clinical trials
- Administering the Product to humans
- Using the Product in collaboration with a commercial or non-academic entity

“Commercial Product” means any product intended for: (i) current or future sale; (ii) use in a fee-for-service; or (iii) any diagnostic, clinical, or therapeutic use.

Access to the Product is limited solely to those officers, employees, and students of PURCHASER’s academic institution who need access to the Product to perform Academic Research. PURCHASER shall comply with all applicable laws in its use and handling of the Product and shall keep it under reasonably safe and secure conditions to prevent unauthorized use or access.

These use restrictions will remain in effect for as long as PURCHASER possesses the Product.

COMMERCIAL OR NON-ACADEMIC ENTITIES INTERESTED IN PURCHASING OR USING THE PRODUCT MUST CONTACT licensing@emdmillipore.com AND AGREE TO SEPARATE TERMS OF USE PRIOR TO USE OR PURCHASE.

GMO

This product contains genetically modified organisms.
Este producto contiene organismos genéticamente modificados.
Questo prodotto contiene degli organismi geneticamente modificati.
Dieses Produkt enthält genetisch modifizierte Organismen.
Ce produit contient des organismes génétiquement modifiés.
Dit product bevat genetisch gewijzigde organismen.
Tämä tuote sisältää geneettisesti muutettuja organismeja.
Denna produkt innehåller genetiskt ändrade organismer

■ antibodies ■ Multiplex products ■ biotools ■ cell culture ■ enzymes ■ kits ■ proteins/peptides ■ siRNA/cDNA products

Please visit www.millipore.com for additional product information, test data and references

EMD Millipore Corporation, 28820 Single Oak Drive, Temecula, CA 92590, USA 1-800-437-7500

Technical Support: T: 1-800-MILLIPORE (1-800-645-5476) • F: 1-800-437-7502

FOR RESEARCH USE ONLY. Not for use in diagnostic procedures. Not for human or animal consumption. Purchase of this Product does not include any right to resell or transfer, either as a stand-alone product or as a component of another product. Any use of this Product for purposes other than research is strictly prohibited.

EMD Millipore®, the M mark, Upstate®, Chemicon®, Linco® and all other registered trademarks, unless specifically identified above in the text as belonging to a third party, are owned by Merck KGaA, Darmstadt, Germany. Copyright ©2008-2019 Merck KGaA, Darmstadt, Germany. All rights reserved.



We Buy 100% Certified Renewable Energy