

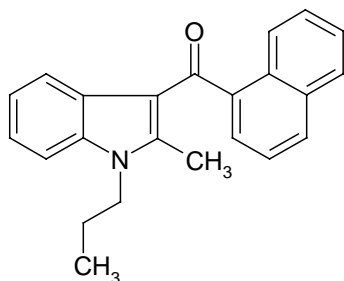
Product Information

JWH-015

Product Number **J4252**

Cas #: 155471-08-2

Synonyms: (2-Methyl-1-propyl-1H-indol-3-yl)-1-naphthalenyl-methanone



Molecular Weight

327.43

Molecular Formula

C₂₃H₂₁NO

Product Description

Selective CB₂ cannabinoid receptor ligand

Solubility

Soluble in DMSO (2.75 mg/ml); insoluble in water

Storage

Store tightly sealed at -20°C.

References

Griffin, G., et al. Eur. J. Pharmacol. 339: 53-61, 1997.

SMS 02/23/2000

Sigma brand products are sold through Sigma-Aldrich, Inc.

Sigma-Aldrich, Inc. warrants that its products conform to the information contained in this and other Sigma-Aldrich publications. Purchaser must determine the suitability of the product(s) for their particular use. Additional terms and conditions may apply. Please see reverse side of the invoice or packing slip.