

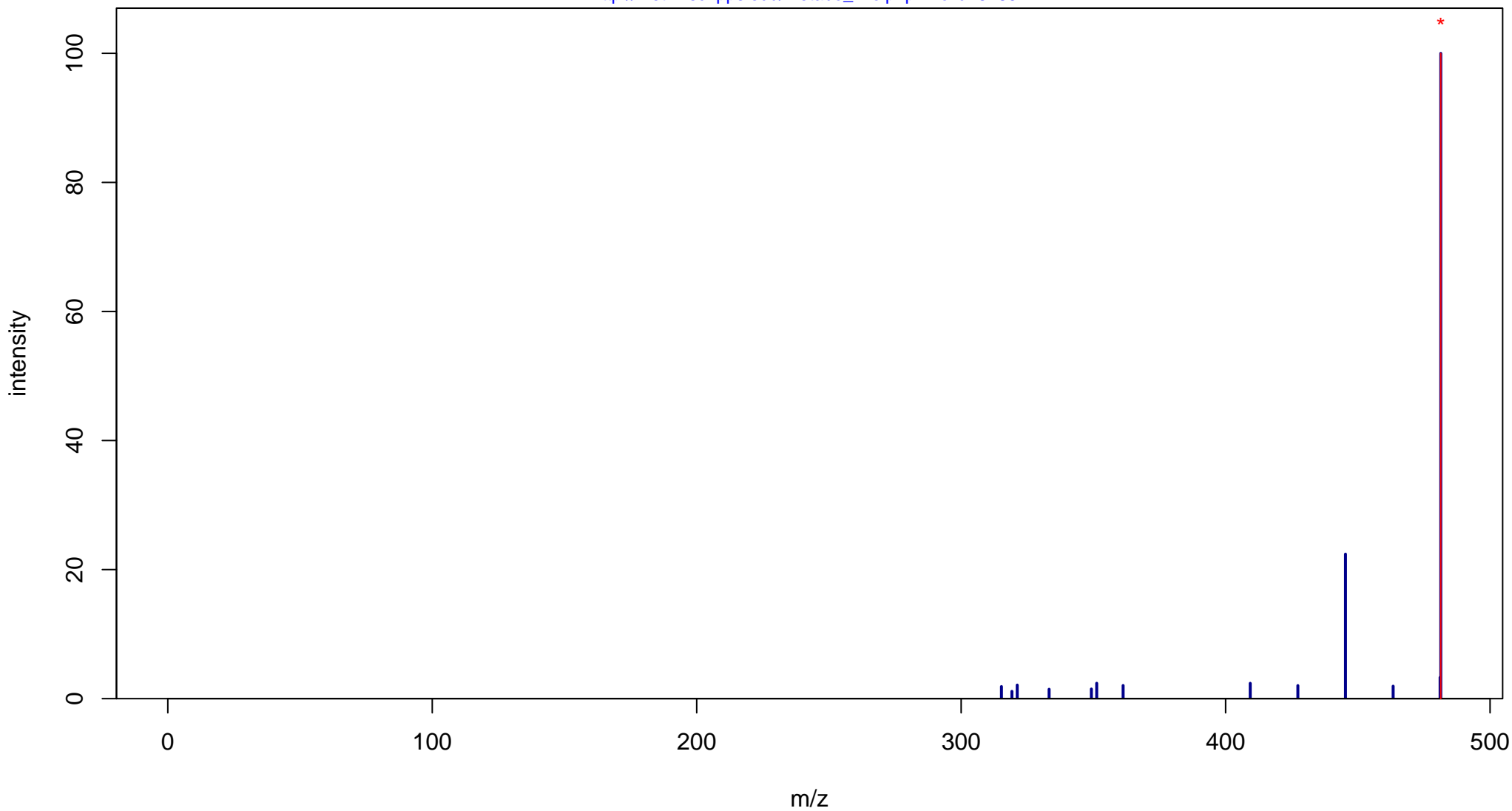
Epibrassinolide

Mass: 480.3451 Formula: C₂₈H₄₈O₆

mode: + collisionE: 0V

METLIN ID: 57802 SIGMA Prod: E1641

http://metlin.scripps.edu/metabo_info.php?molid=57802



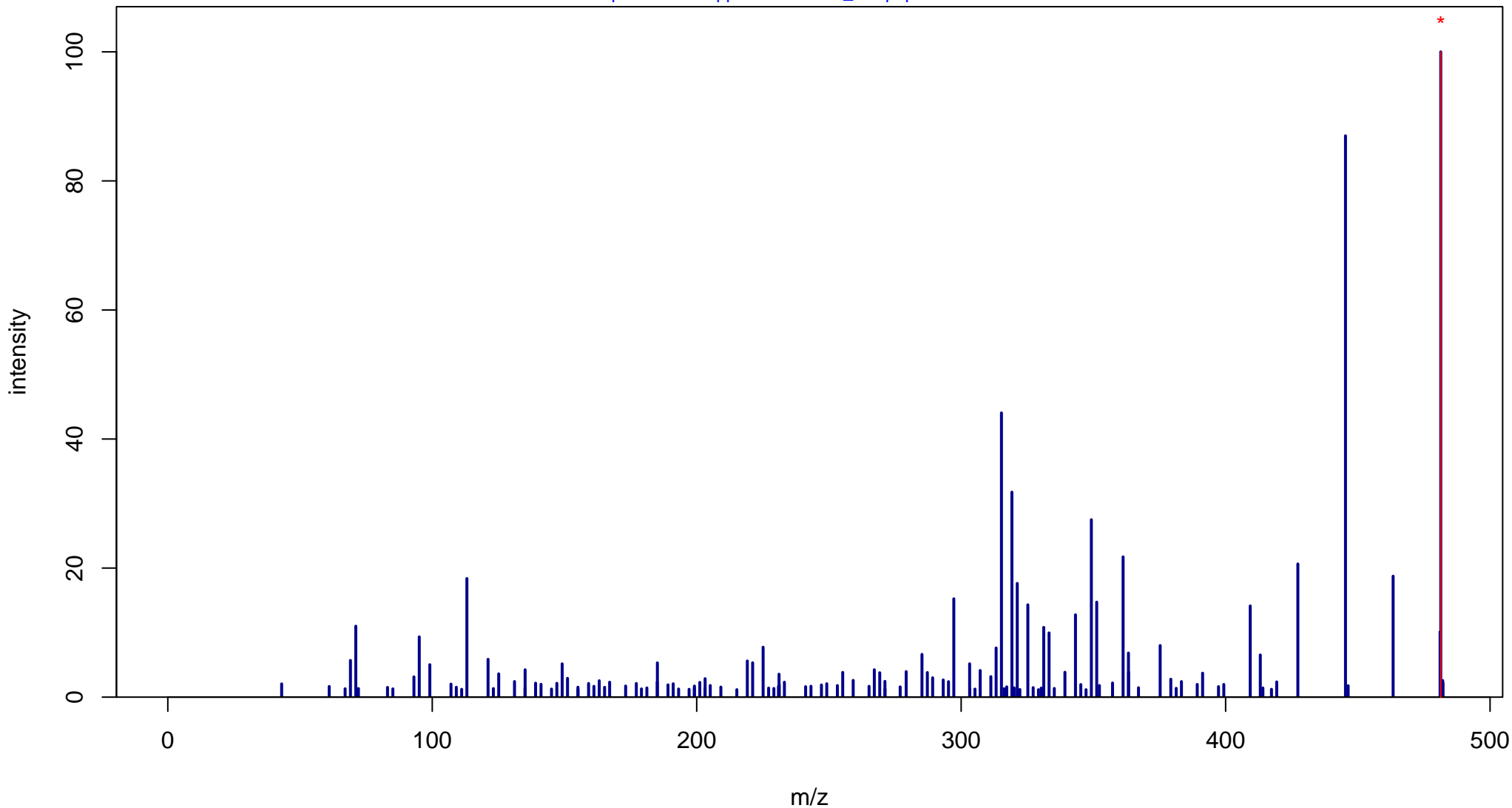
Epibrassinolide

Mass: 480.3451 Formula: C₂₈H₄₈O₆

mode: + collisionE: 10V

METLIN ID: 57802 SIGMA Prod: E1641

http://metlin.scripps.edu/metabo_info.php?molid=57802



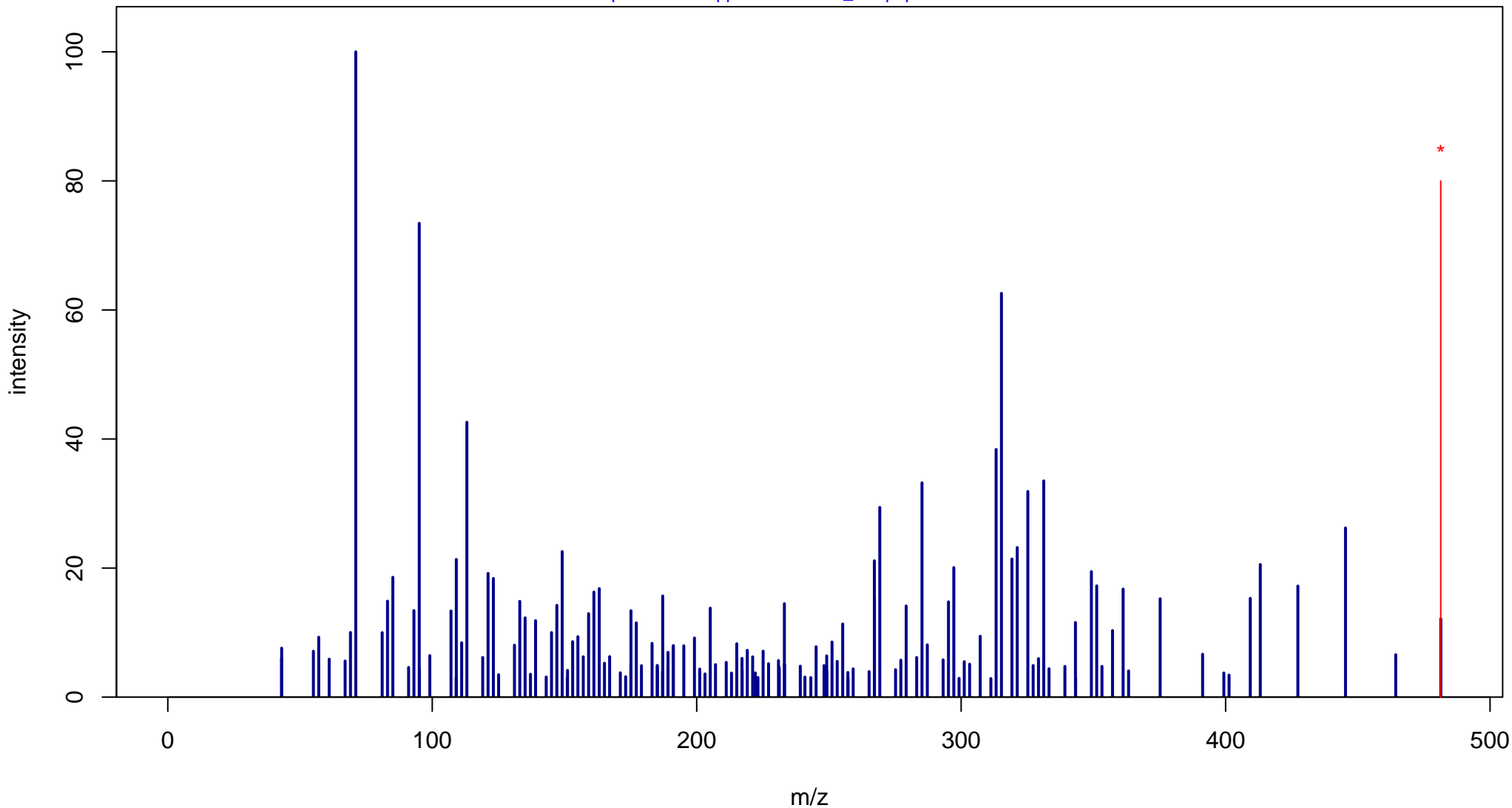
Epibrassinolide

Mass: 480.3451 Formula: C₂₈H₄₈O₆

mode: + collisionE: 20V

METLIN ID: 57802 SIGMA Prod: E1641

http://metlin.scripps.edu/metabo_info.php?molid=57802



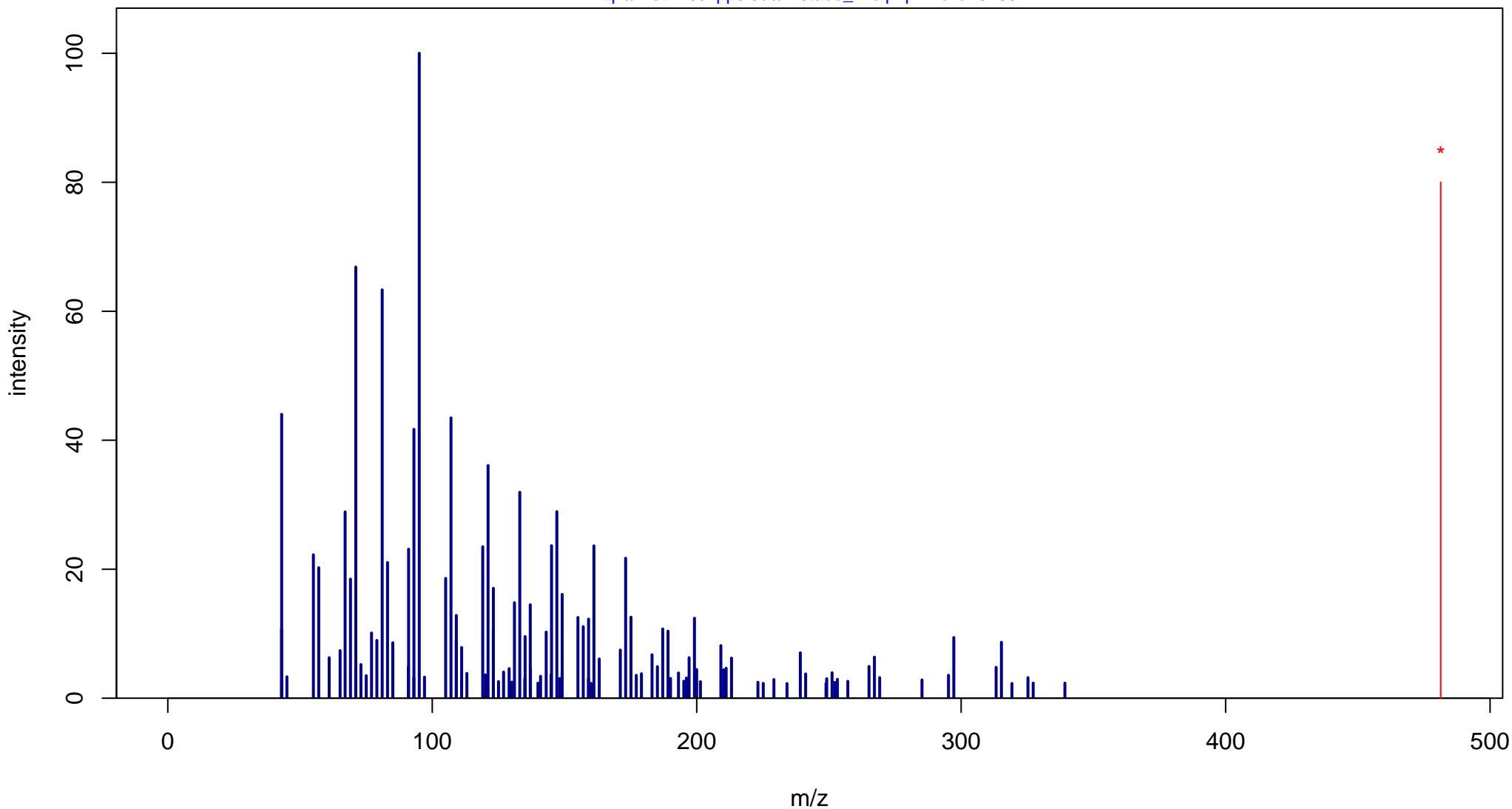
Epibrassinolide

Mass: 480.3451 Formula: C₂₈H₄₈O₆

mode: + collisionE: 40V

METLIN ID: 57802 SIGMA Prod: E1641

http://metlin.scripps.edu/metabo_info.php?molid=57802



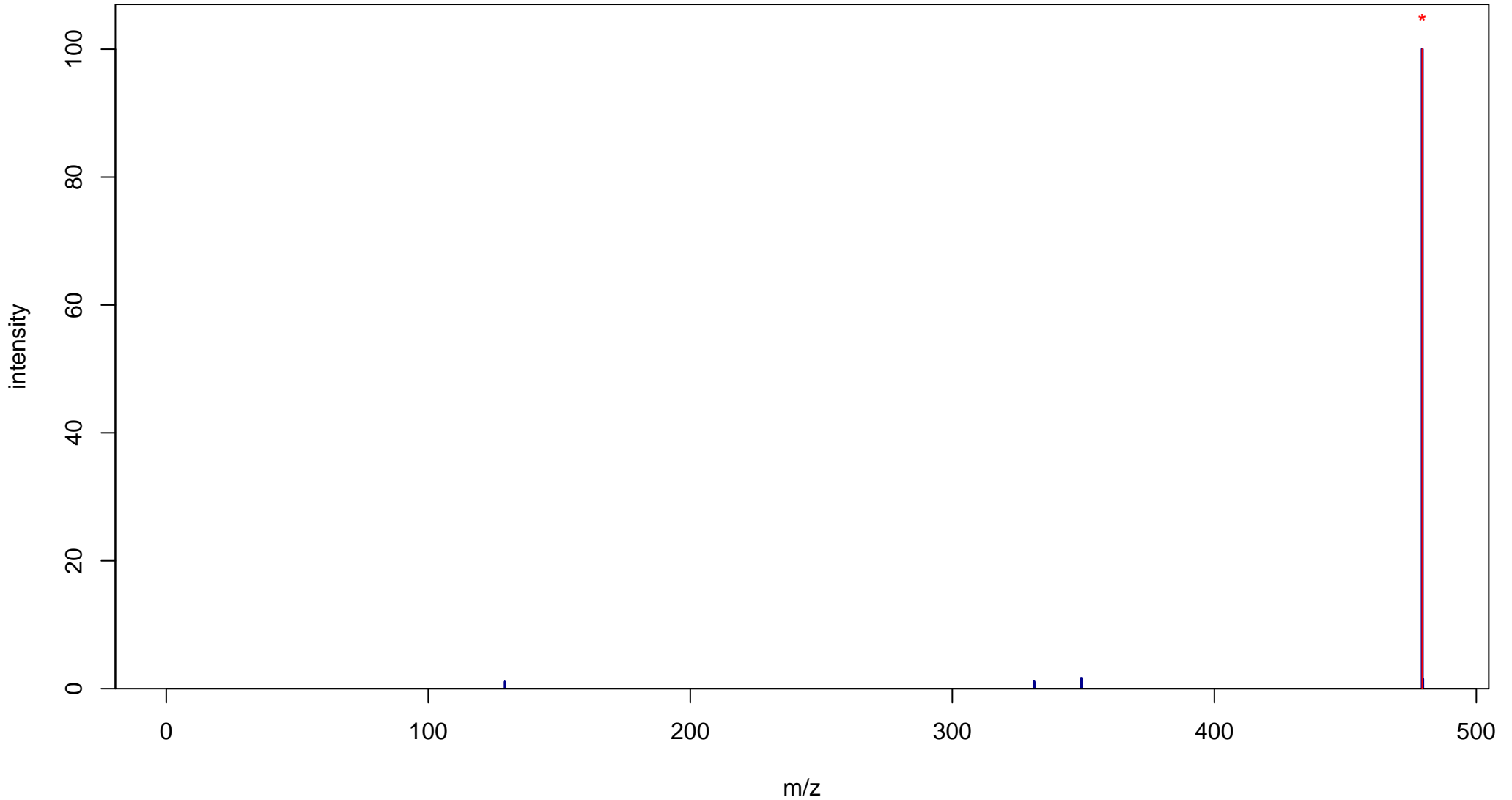
Epibrassinolide

Mass: 480.3451 Formula: C₂₈H₄₈O₆

mode: - collisionE: 0V

METLIN ID: 57802 SIGMA Prod: E1641

http://metlin.scripps.edu/metabo_info.php?molid=57802



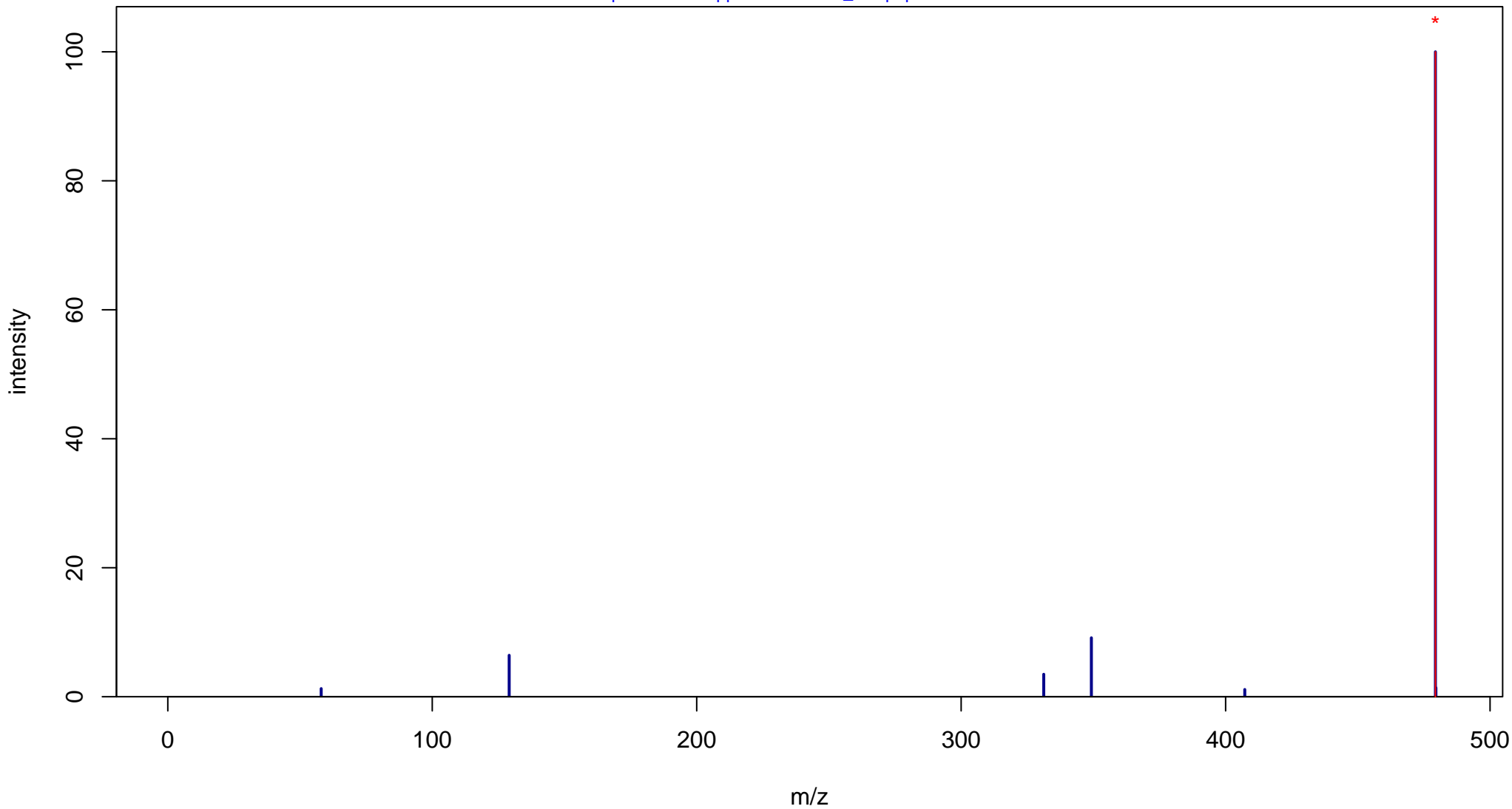
Epibrassinolide

Mass: 480.3451 Formula: C₂₈H₄₈O₆

mode: - collisionE: 10V

METLIN ID: 57802 SIGMA Prod: E1641

http://metlin.scripps.edu/metabo_info.php?molid=57802



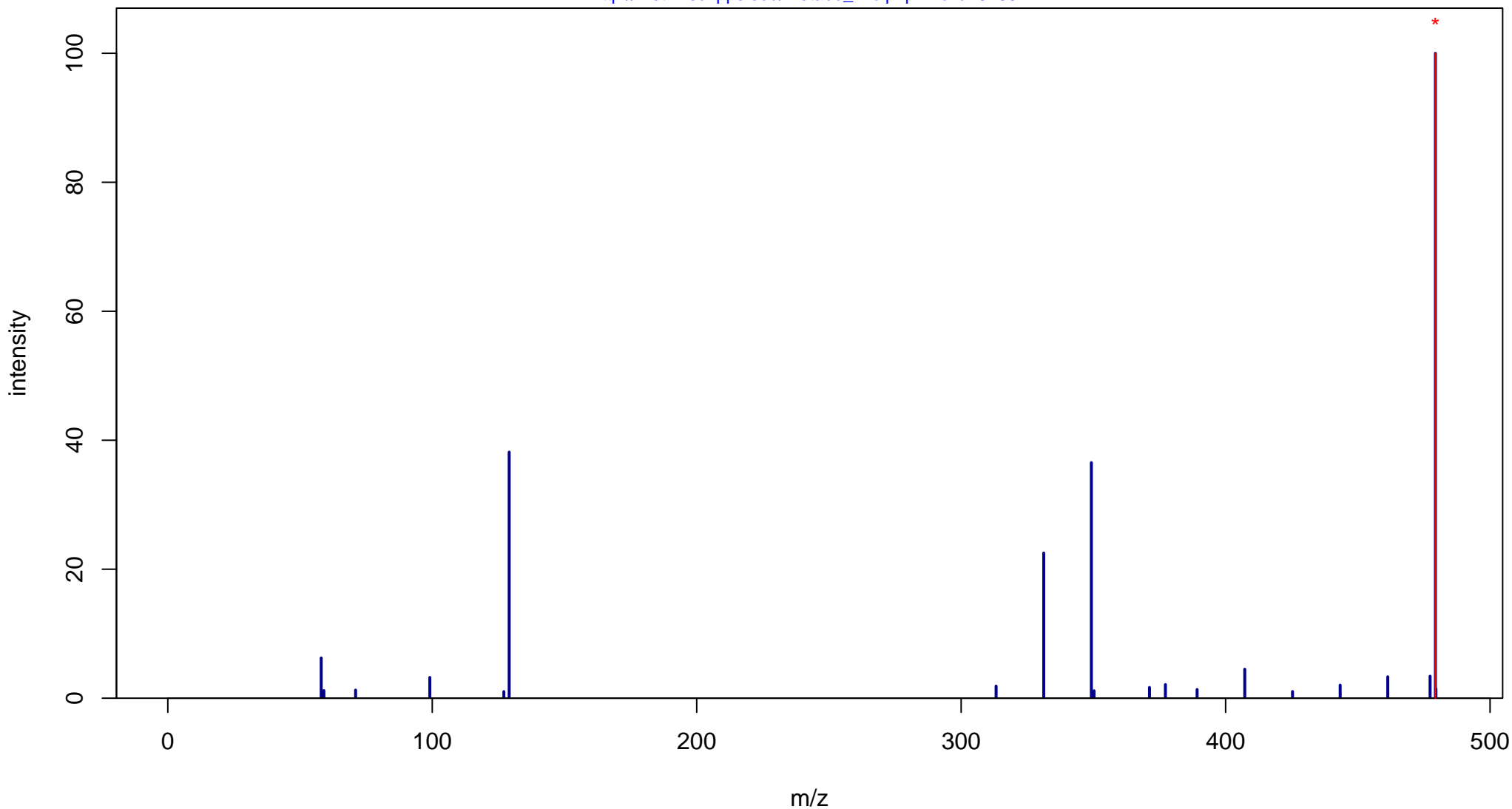
Epibrassinolide

Mass: 480.3451 Formula: C₂₈H₄₈O₆

mode: - collisionE: 20V

METLIN ID: 57802 SIGMA Prod: E1641

http://metlin.scripps.edu/metabo_info.php?molid=57802



Epibrassinolide

Mass: 480.3451 Formula: C₂₈H₄₈O₆

mode: - collisionE: 40V

METLIN ID: 57802 SIGMA Prod: E1641

http://metlin.scripps.edu/metabo_info.php?molid=57802

