

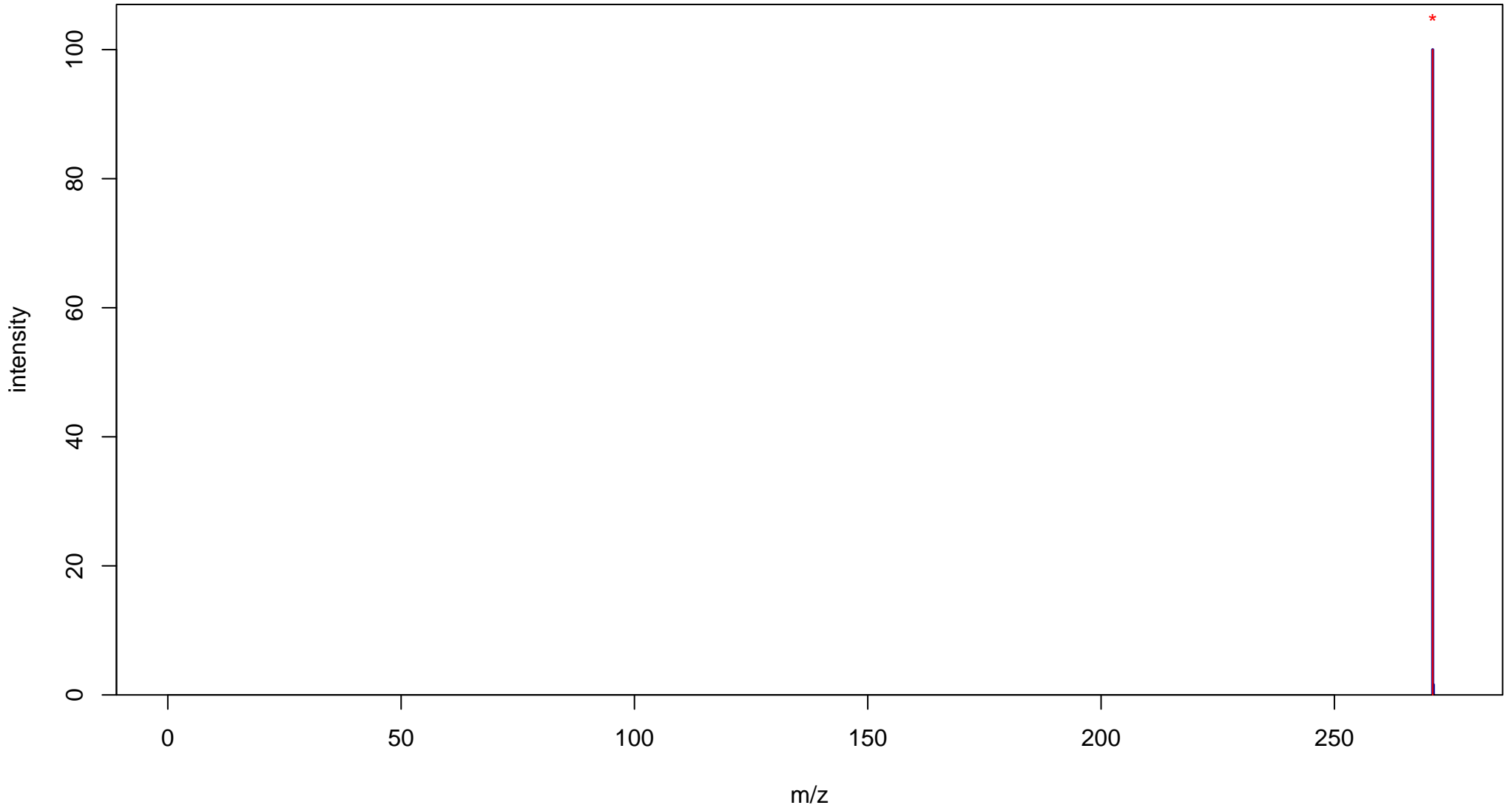
Baicalein

Mass: 270.0528 Formula: C₁₅H₁₀O₅

mode: + collisionE: 0V

METLIN ID: 43859 SIGMA Prod: 465119

http://metlin.scripps.edu/metabo_info.php?molid=43859



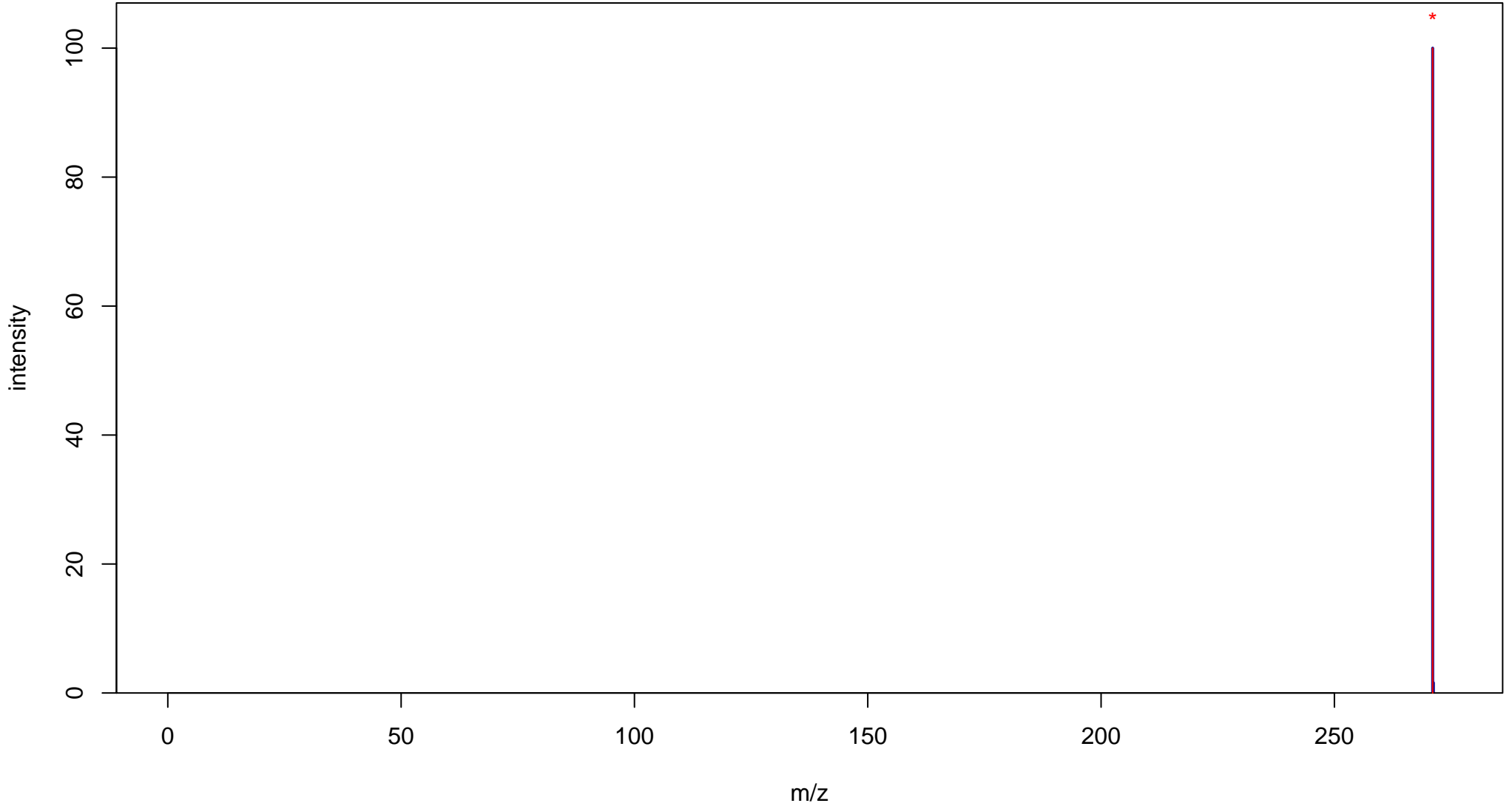
Baicalein

Mass: 270.0528 Formula: C₁₅H₁₀O₅

mode: + collisionE: 10V

METLIN ID: 43859 SIGMA Prod: 465119

http://metlin.scripps.edu/metabo_info.php?molid=43859



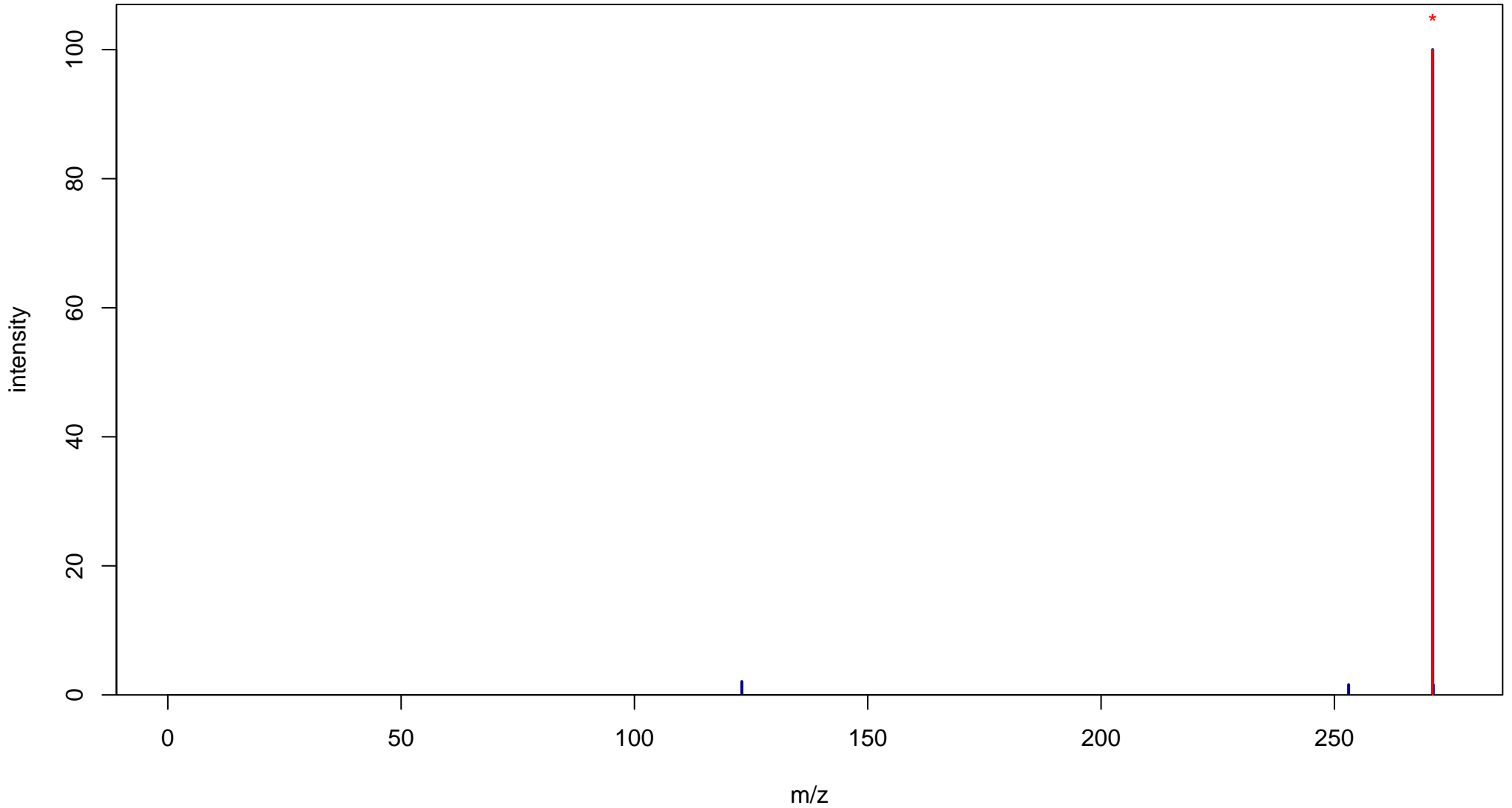
Baicalein

Mass: 270.0528 Formula: C₁₅H₁₀O₅

mode: + collisionE: 20V

METLIN ID: 43859 SIGMA Prod: 465119

http://metlin.scripps.edu/metabo_info.php?molid=43859



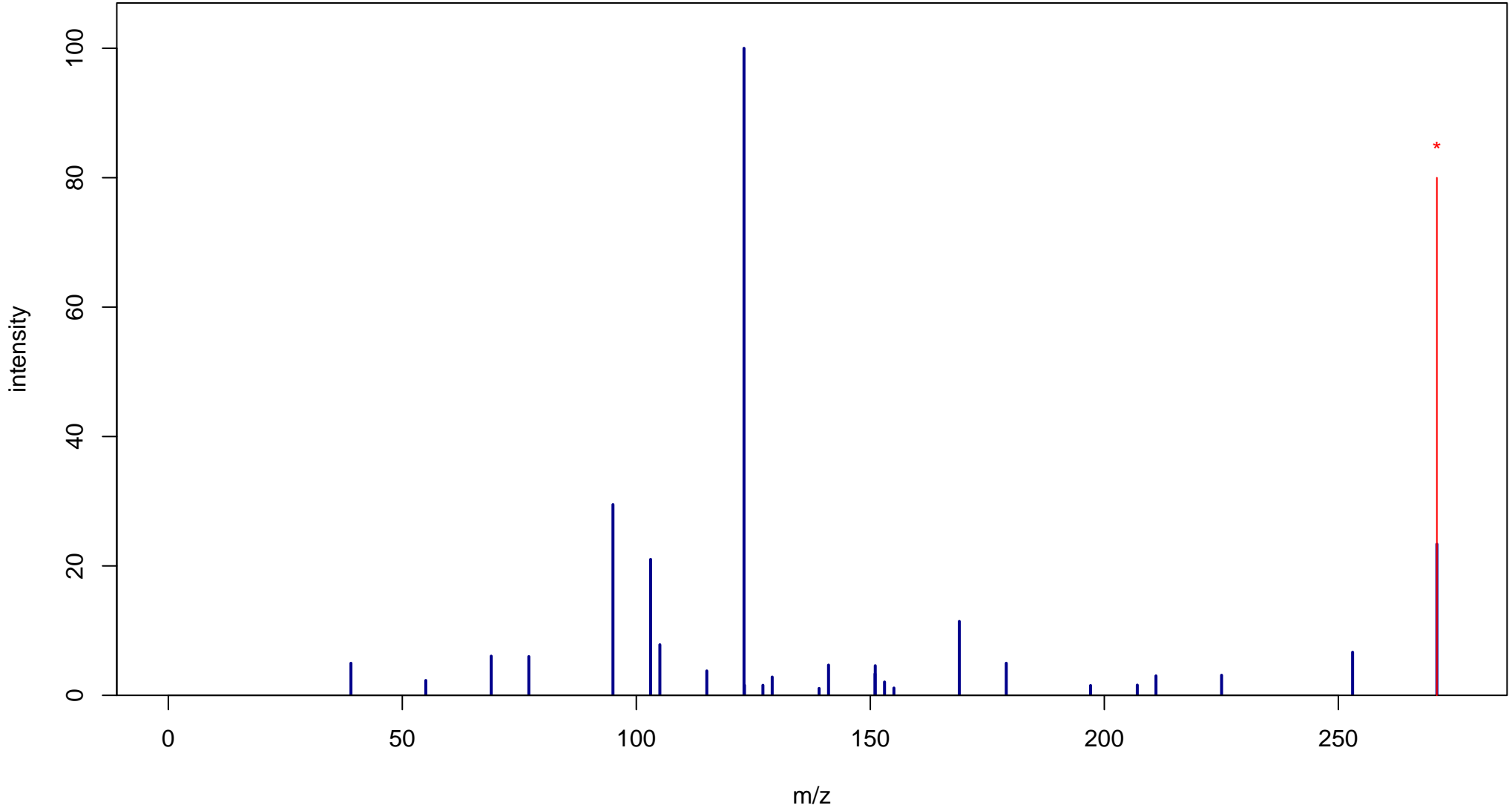
Baicalein

Mass: 270.0528 Formula: C₁₅H₁₀O₅

mode: + collisionE: 40V

METLIN ID: 43859 SIGMA Prod: 465119

http://metlin.scripps.edu/metabo_info.php?molid=43859



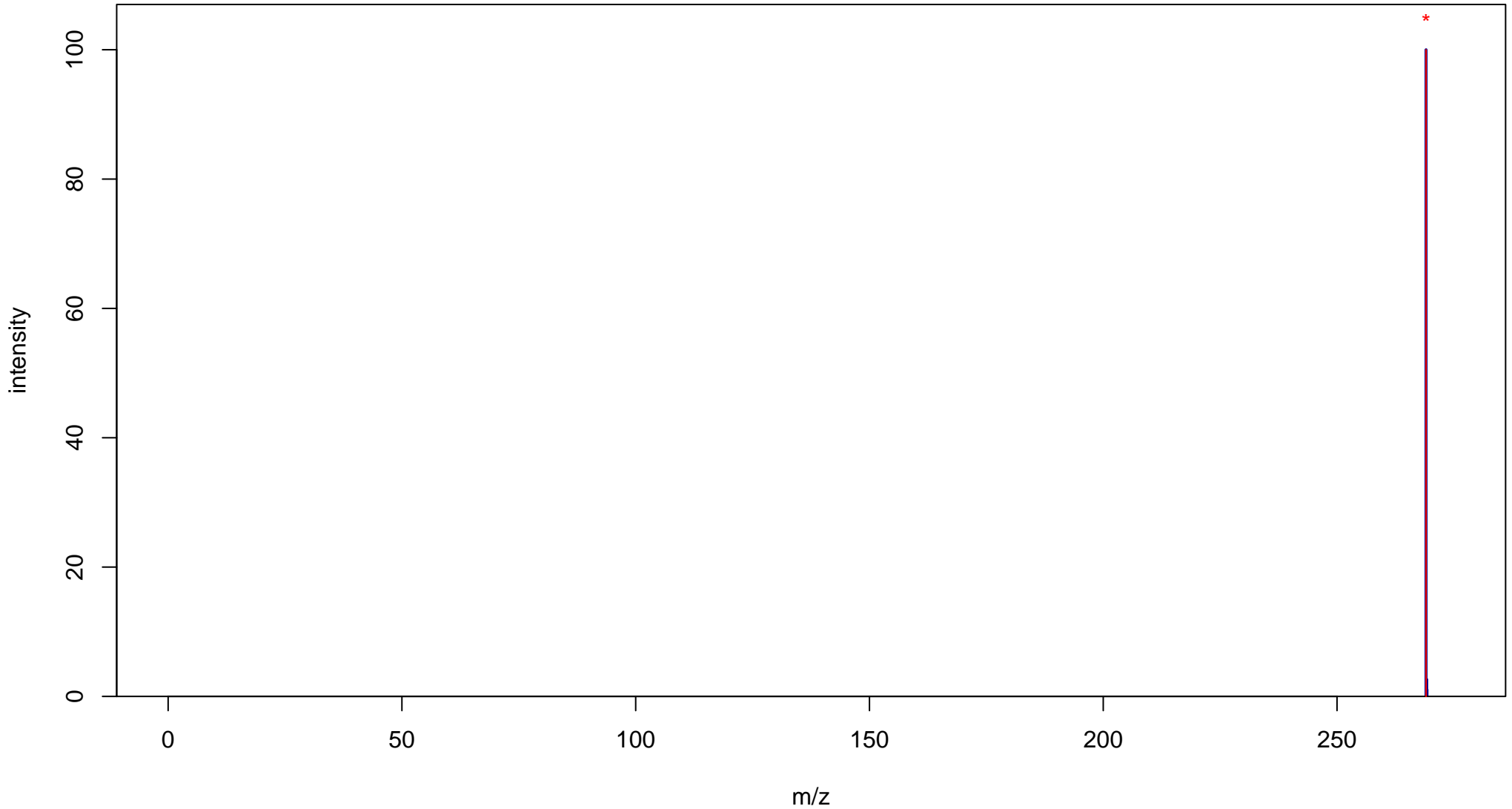
Baicalein

Mass: 270.0528 Formula: C₁₅H₁₀O₅

mode: - collisionE: 0V

METLIN ID: 43859 SIGMA Prod: 465119

http://metlin.scripps.edu/metabo_info.php?molid=43859



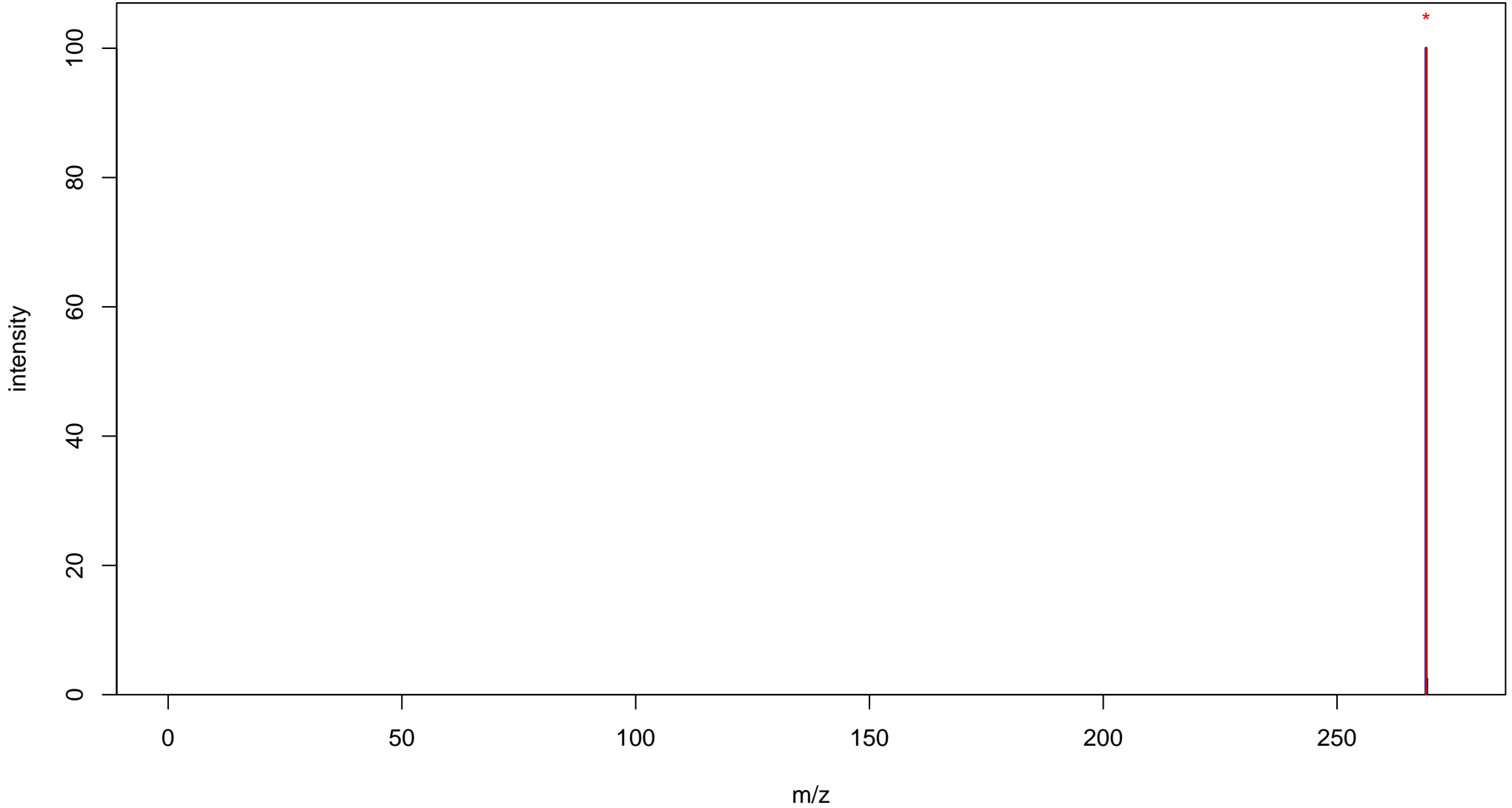
Baicalein

Mass: 270.0528 Formula: C₁₅H₁₀O₅

mode: - collisionE: 10V

METLIN ID: 43859 SIGMA Prod: 465119

http://metlin.scripps.edu/metabo_info.php?molid=43859



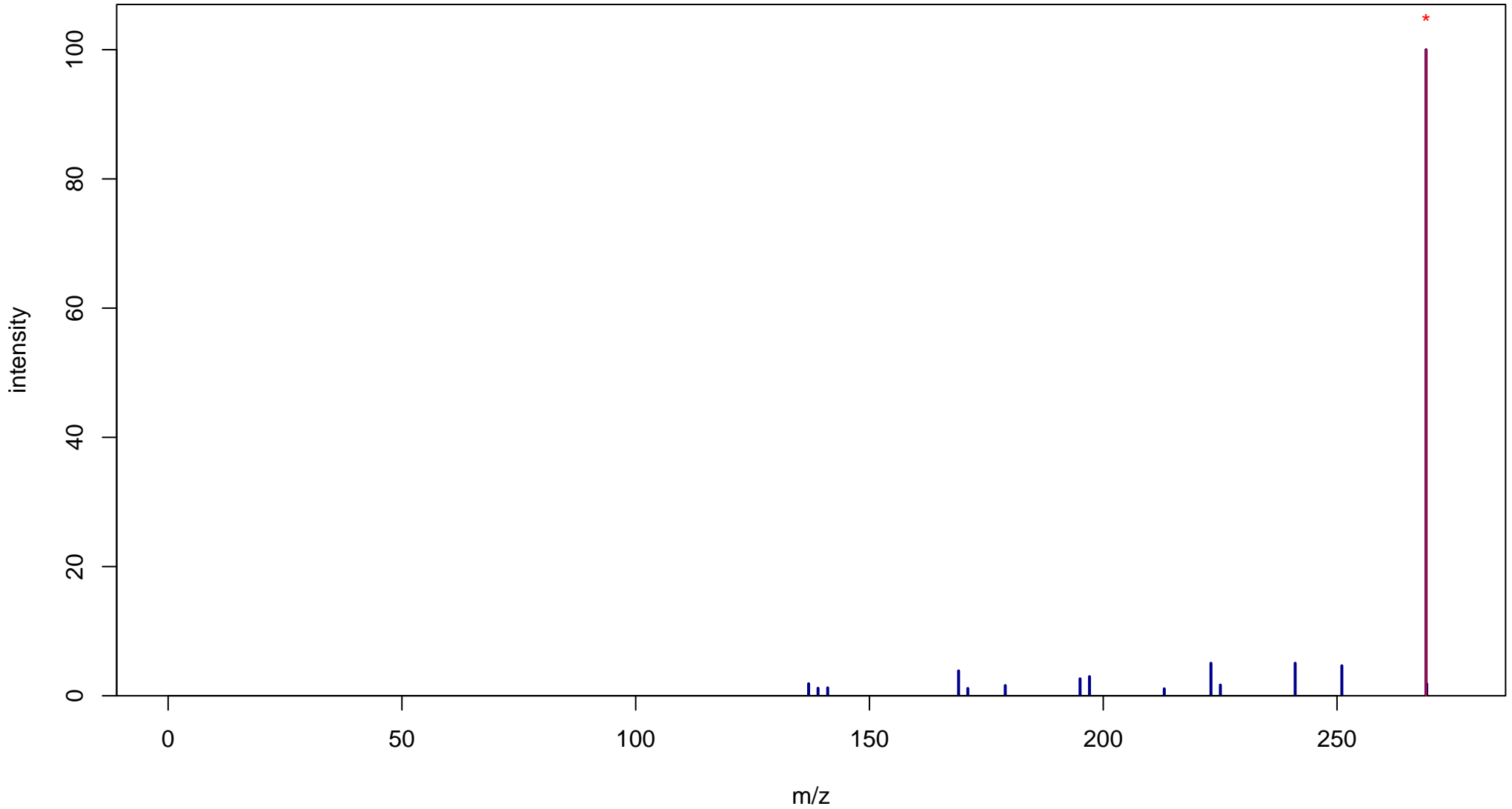
Baicalein

Mass: 270.0528 Formula: C₁₅H₁₀O₅

mode: - collisionE: 20V

METLIN ID: 43859 SIGMA Prod: 465119

http://metlin.scripps.edu/metabo_info.php?molid=43859



Baicalein

Mass: 270.0528 Formula: C₁₅H₁₀O₅

mode: - collisionE: 40V

METLIN ID: 43859 SIGMA Prod: 465119

http://metlin.scripps.edu/metabo_info.php?molid=43859

