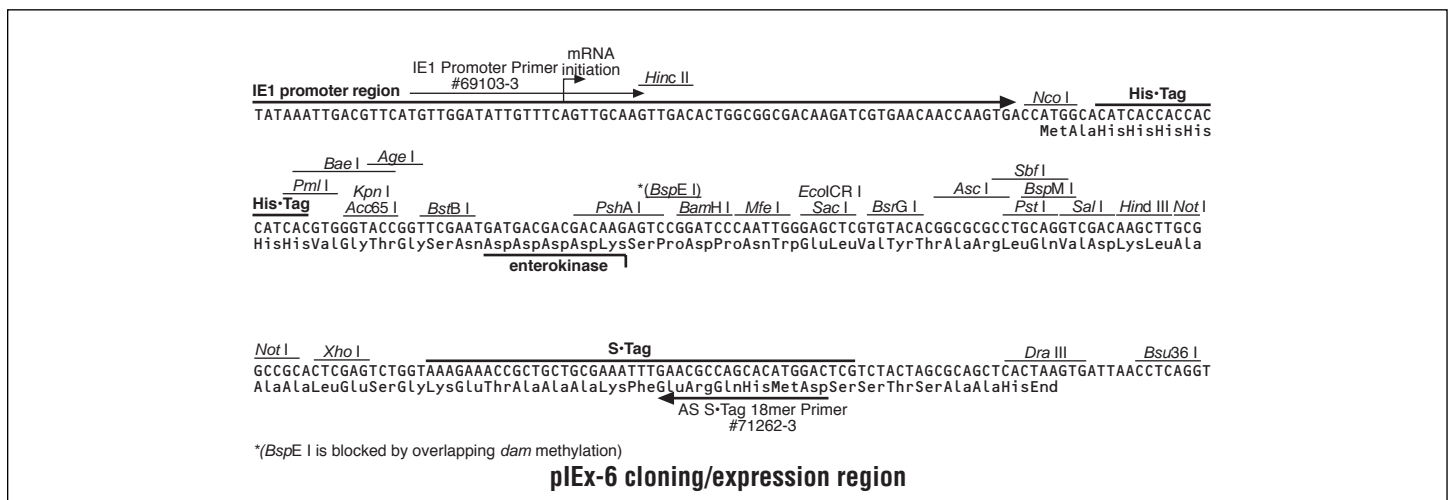
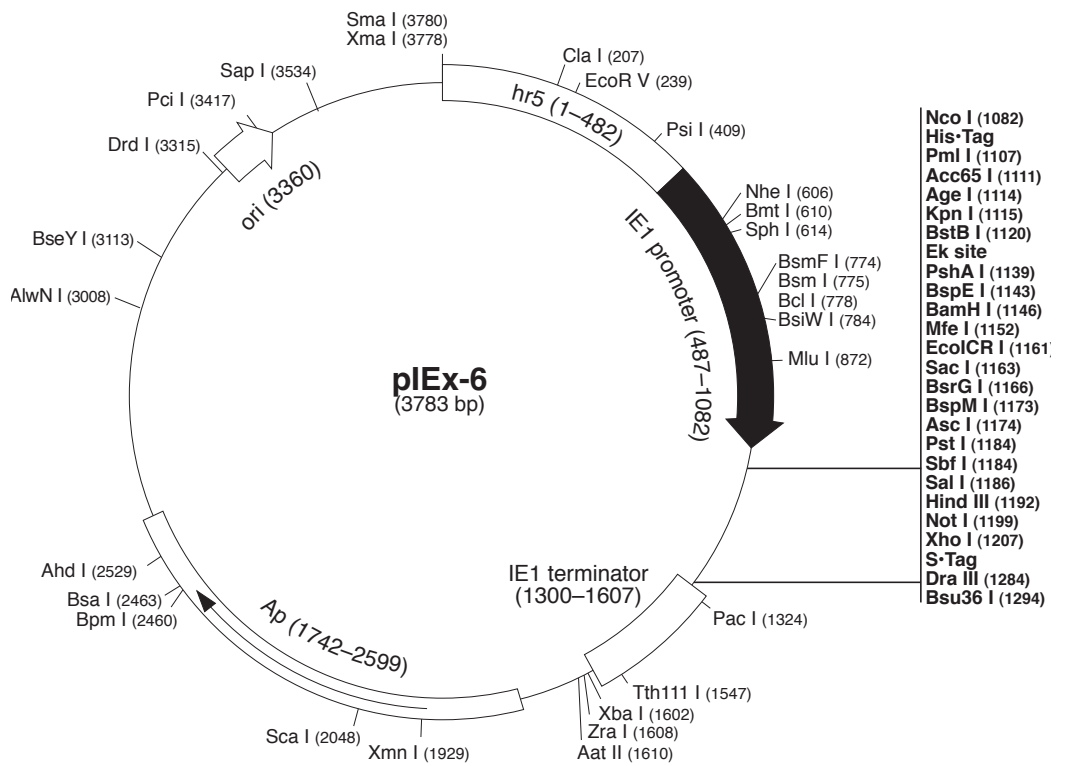


	Cat. No.
pIEx-6 DNA	71333-3
pIEx-6 sequence landmarks	
hr 5 enhancer	1-482
IE1 promoter	487-1082
IE1 transcription start	1034
His•Tag [®] coding sequence	1090-1107
Multiple cloning sites (<i>Nco</i> I- <i>Dra</i> III)	1082-1287
S•Tag [™] coding sequence	1219-1263
IE1 terminator	1300-1607
<i>bla</i> (<i>Ap</i> ^R) coding sequence	1742-2599
pUC origin	3360

The pIEx[™]-6 Vector is designed to allow rapid, high-level protein expression in insect cells by using transient transfection. This vector features the baculovirus hr5 enhancer and the IE1 (immediate early) promoter to direct expression in insect cells. This promoter/enhancer combination recruits endogenous insect cell transcription machinery, thereby avoiding baculovirus infection and the associated cytotoxic effects. Cloning sites are available for producing fusion proteins with an N-terminal His•Tag[®] sequence. An optional C-terminal S•Tag[™] sequence can also be used for detection, purification and quantification of fusion proteins. Unique sites are shown on the circle map. Sequencing can be performed using the IE1 Promoter Primer (Cat. No. 69103-3) and AS S•Tag 18 mer Primer (Cat. No. 71262-3).

Note: the *BspE* I site is modified by *dam* methylation, so the plasmid must be grown in *dam*⁻ hosts to use this site for cloning.



pEx-6 Restriction Sites

Enzyme	# Sites	Locations	Enzyme	# Sites	Locations
AatII	1	1610	EcoRI	6	83 185 292 365 472
Acc65I	1	1111			3773
AccI	2	1187 1264	EcoRV	1	239
AccII	3	1557 1927 2300	FspI	2	654 2306
AflIII	4	192 372 872 3417	HaeII	2	3177 3547
AgeI	1	1114	HincII	2	1044 1188
AhdI	1	2529	HindIII	1	1192
AlwNI	1	3008	KpnI	1	1115
ApaLI	2	1857 3103	MfeI	1	1152
AscI	1	1174	MluI	1	872
Asel	5	831 1323 2354 3589 3648	MspI	3	1758 2117 2276
AvaI	2	1207 3778	NcoI	1	1082
BaeI	1	1128	NheI	1	606
BamHI	1	1146	NotI	1	1199
BanI	3	1111 2576 3673	NspI	3	614 691 3421
BanII	1	1163	NspV	1	1120
BceAI	6	68 174 731 1187 1356	PacI	1	1323
		2917	PciI	1	3417
BcgI	3	1211 1441 1991	PfIMI	2	1107 1254
BciVI	4	533 868 1692 3219	PinAI	1	1114
BclI	1	778	PmlI	1	1107
BglI	2	995 2411	PpII	2	1901 2711
Bme1580I	2	1861 3107	PshAI	1	1139
Bmrl	2	1585 2489	PsiI	1	409
Bmrl	1	610	Psrl	3	89 298 371
Bpml	1	2460	PstI	1	1184
BpuEI	4	1925 2793 3034 3332	PvuI	2	207 2160
BsaAI	4	193 373 784 1107	PvuII	2	776 3597
BsaHI	2	1607 1989	SacI	1	1163
BsaI	1	2463	Sall	1	1186
BsaWI	5	1114 1143 2233 3064 3211	SapI	1	3534
BsaXI	3	1150 1454 3579	SbfI	1	1184
BseYI	1	3113	Scal	1	2048
BsiEI	7	207 845 1202 2011 2160	SfiI	5	1180 1467 2283 2961 3152
		3083 3507	SmaI	1	3780
BsiHKAI	4	1163 1861 1946 3107	SmlI	5	1207 1904 2772 3049 3311
BsiWI	1	784	SphI	1	614
BsmAI	2	1687 2463	Sse8387I	1	1184
BsmFI	1	774	SspI	3	973 1484 1724
BsmI	1	775	StyI	2	568 1082
Bsp1286I	4	1163 1861 1946 3107	TaqII	3	1997 2182 3521
BspCNI	6	838 1307 2041 2560 2726	TatI	3	724 1166 2046
		3135	TspGWI	6	552 587 636 790 1748
BspEI	1	1143			2090
BspHI	2	1689 2697	Tth111I	1	1547
BspLU11I	1	3417	XbaI	1	1602
BspMI	1	1173	XhoI	1	1207
BsrBI	4	863 1687 3488 3729	XmaI	1	3778
BsrDI	2	2295 2469	XmnI	1	1929
BsrFI	2	1114 2444	ZraI	1	1608
BsrGI	1	1166			
BssHII	3	502 763 1174	Enzymes that do not cut pEx-6:		
BssSI	4	793 1162 1860 3244	AarI	AfeI	AflII
BstBI	1	1120	AlaI	AlaI	AlaI
BstYI	7	1146 1882 1899 2667 2679	Apal	AsiSI	AvrII
		2765 2776	BbvCI	BfrBI	BglII
Bsu36I	1	1294	BpII	Bpu10I	BsaBI
BtgI	1	1082	BsmBI	Bst1107I	BstAPI
BtsI	4	727 2110 2130 3637	BstI217I	BtrI	EcoNI
Clal	1	207	FseI	FspAI	HpaI
DraI	3	1951 2643 2662	NaeI	NarI	NdeI
DrallI	1	1284	Nsil	PfoI	PmeI
DrdI	1	3315	RsrII	SacII	SanDI
EaeI	4	842 1199 2136 3578	SfoI	SgrAI	SnaBI
EagI	2	842 1199	StuI	Swal	XcmI
EarI	2	1730 3534			
Ecil	4	916 2387 3215 3361			
Ecl136II	1	1161			
Eco57I	2	1863 2875			
Eco57MI	3	1863 2460 2875			
EcoLCRI	1	1161			