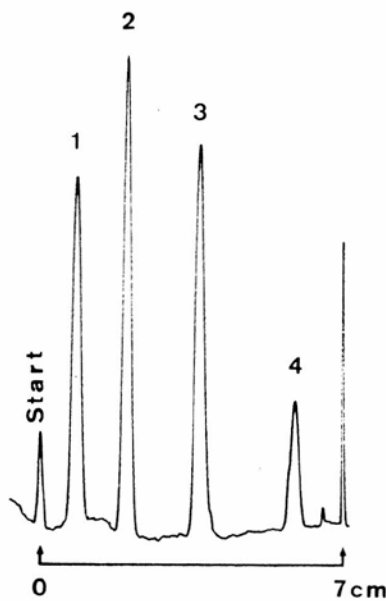


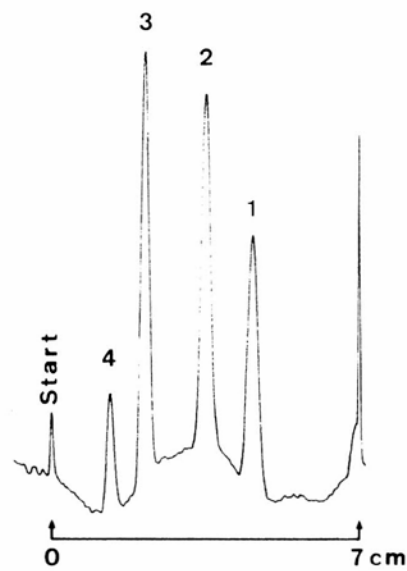
Separation of progesterones

HPTLC CN F254s

Plate	HPTLC pre-coated plate CN F 254s (1.16464)
Eluent	a. straight-phase system: petroleum benzene (40-60°)/acetone 80/20 b. reversed-phase system: acetone/water 60/40
Migration Distance	7 cm
Chamber	Normal chamber without chamber saturation
Compounds	1. 16-Methyleneprednisolone 2. 11 α -Hydroxyprogesterone 3. Progesterone 4. Pregnadienoloneacetate (all 0,1%)
Application volume	200 nl
Detection	In-situ evaluation with TLC/HPTLC scanner (Camag) UV 248 nm



a.



b.