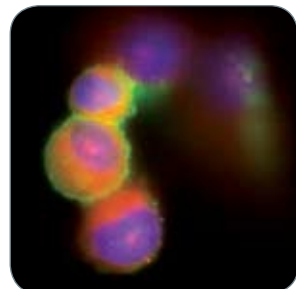
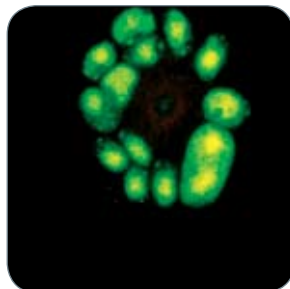
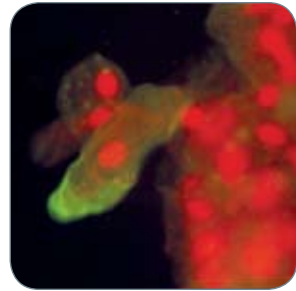
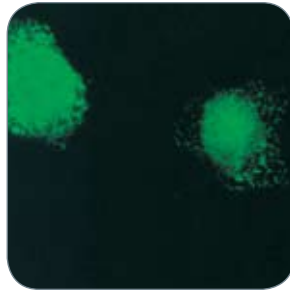


Infectious Disease Antibodies



Antibody Research, Development, and Production

Millipore is a leader in the development of innovative high quality tools and services for infectious disease research, diagnosis, and manufacturing. As a strategic partner, we collaborate with our customers to confront the world's challenging human health issues. From research to development to production, our scientific expertise and revolutionary solutions help researchers and manufacturers undertake their most complex problems and achieve their goals. Millipore also has a long history of in-depth product support and technical assistance. Our products are renowned for their superior performance and proven reliability; creating high quality results to improve the efficiency of both clinical and production environments.

Millipore Corporation is an S&P 500 company with more than 6,100 employees in 47 countries worldwide. For more information visit www.millipore.com.

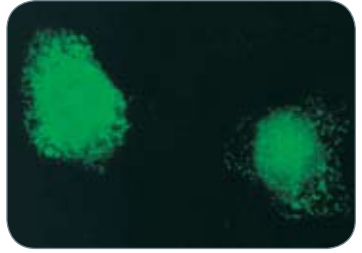
Table of Contents

Adenovirus – Adenovirus 4	3
Arboviral Encephalitis (Arthropod-borne viruses)	
Alphavirus	4
Flavivirus	4
Dengue Viruses	4
Pan-Arbovirus Panel	4
Astrovirus – Bacillus anthracis	5
Bacterial Peptidoglycan – Coxsackievirus	5
Cryptosporidium Parvum – Cytomegalovirus (CMV)	5
Cytomegalovirus (CMV)	5
E. coli – Hepatitis C Virus (HCV)	6
Hepatitis C Virus (HCV) – HTLV1	7
Influenza A	8
Influenza B – Listeria Monocytogenes	8
Measles – Mycoplasma bovis	9
Papillomavirus – Parainfluenza 2	9
Parainfluenza 2 – Prion Protein	10
Pseudorabies – RSV Fusion	10
Respiratory Syncytial Virus	10
SV40 Large T Antigen – Yersinia Pestis	11

Antibodies to Infectious Agents

Ordering Information

Description	Applications	Format	Host	Qty	Catalogue No.
Adenovirus, clone 2/6	IH, IF, EIA	Pur	Ms IgG ₁	100 µg	MAB8051
Adenovirus, clone 20/11	IH(P), IH, IF, EIA, FC	Pur	Ms IgG ₁	100 µg	MAB8052
Adenovirus, polyclonal	IB, IH, IF, EIA	Pur	Goat	1 mL	AB1056
Adenovirus, polyclonal	IF, IH	FITC	Goat	1 mL	AB1056F
Adenovirus (Blend), clones 2/6, 20/11	IH(P), IH, IF, EIA, FC	Asc	Ms IgG ₁	100 µL	MAB805
Adenovirus 1,2,5,6, clone 7/48.7C	IH, EIA	Asc	Ms IgG ₁	100 µL	MAB8043
Adenovirus 1,2,5,6, clone 7/48-7A	IH, EIA	Asc	Ms IgG ¹	100 µL	MAB8044



Cat. No. MAB8052 Adenovirus (clone 20/11): Monoclonal Antibody Specific to all known serotypes of adenovirus. Applications are EIA, IFA, IHC (trypsinized paraffin embedded tissue) and FC.

Monoclonal antibody detection of Adenovirus infected HEp2 cells by indirect immunofluorescence method, using Cat. No. MAB8052 and fluorescein-conjugated anti-mouse secondary.

IH	Immunohistochemistry	CC	Culture Confirmation
IH(P)	Immunohistochemistry – paraffin embedded sections	DB	Dot Blots
IF	Immunofluorescence	HI	Hemagglutination Inhibition
IF(P)	Immunofluorescence – paraffin embedded sections	LF	Lateral Flow
IB	Immunoblotting	IC	Immunocytochemistry
EIA	Enzyme Immunoassay (ELISA)	IP	Immunoprecipitation
Neut	Neutralizing	WB	Western Blot
BLK	Function Blocking Assays	FC	Flow Cytometry

Arboviral Encephalitis

(Arthropod-borne viruses)

Approximately 160 species of arboviruses (arthropod-borne viruses) have been identified and many of them have been found to be pathogenic with CNS involvement. One common feature of arthropod borne viral encephalitis is that it often occurs in

small epidemics in many locations throughout the world. The following tables show the reactivity of various Millipore monoclonal antibodies to groups and species of arboviruses.

Alphavirus

Antibody	Clone	Family/ genus/sero	Description	Reactivity						
				EEE (NJ,60, BeAn)	WEE (MCM)	WEE (HJ)	WEE (SIN)	VEE (Subtypes 1-5)	VEE (Subtype 1, α-f)	Semliki Forest Virus
MAB8754	1A4B-6	Alphavirus	EEE (NJ/60)	X	X	X	X	X	X	X
MAB8756	1B1C-4	Alphavirus	EEE (BeAn)	X	–	–	–	–	–	–
MAB8746	2A3D-5	Alphavirus	WEE (MCM)	–	X	X	X	–	–	–
MAB8765	2B1C-6	Alphavirus	WEE (MCM)	–	X	–	–	–	–	–
MAB8766	2D4-1	Alphavirus	Highland J (HJ)	–	–	–	X	–	–	–
MAB8755	1A3B-7	Alphavirus	VEE (PTF-39)	–	–	–	–	X	X	–
MAB8767	1A3A-9	Alphavirus	VEE (PTF-39)	–	–	–	–	X	X	–

Flavivirus

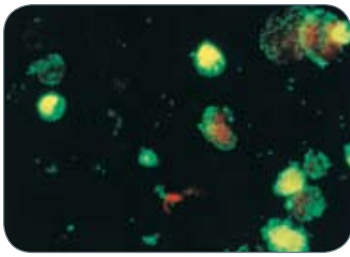
Antibody	Clone	Family/ genus/sera	Description	Reactivity					
				SLE	JE	MVE	West Nile	Dengue	Yellow Fever
MAB8744	6B6C-1	Flavivirus	SLE (MSI-7)	X	X	X	X	X	X
MAB8752	4B6C-2	Flavivirus	MVE (original)	–	–	X	–	–	–
MAB8741	1B5D-1	Flavivirus	SLE (B-230)	X	X	–	–	–	–
MAB8743	6B4A-10	Flavivirus	JE (NAK)	X	X	X	X	–	–
MAB984	2D12	Flavivirus	Yellow Virus (17D strain)	–	–	–	–	–	X
MAB8150	3.67G	Flavivirus	West Nile/Kunjin	–	–	–	X	–	–
MAB8151	3.91D	Flavivirus	West Nile/Kunjin	–	–	–	X	–	–
MAB8152	3.1112G	Flavivirus	West Nile/Kunjin	–	–	–	X	–	–

Dengue Viruses

Antibody	Clone	Family/ genus/sera	Description	Reactivity			
				Den 1	Den 2	Den 3	Den 4
MAB8701	15F3-1	Flavivirus	Dengue Virus Type I	X	–	–	–
MAB8702	3H5-1	Flavivirus	Dengue Virus Type II	–	X	–	–
MAB8703	5D4-11	Flavivirus	Dengue Virus Type III	–	–	X	–
MAB8704	1H10-6	Flavivirus	Dengue Virus Type IV	–	–	–	X
MAB8705	P3-2H2-21-9	Flavivirus	Dengue 1-4	X	X	X	X

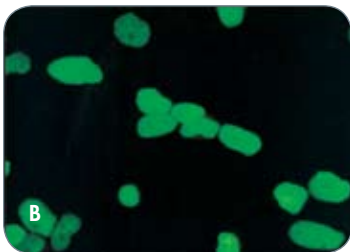
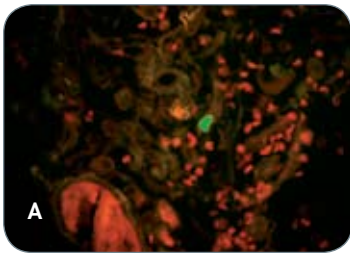
Pan-Arbovirus Panel

Antibody	Clone	Family/ genus/sera	Description	Reactivity			
				All Alpha Viruses	All Flavi Viruses	All Dengue Viruses	All Bunya Viruses
MAB8754	1A4B-6	Alphavirus	EEE NJ/60)	X	–	–	–
MAB8744	6B6C-1	Flavivirus	SLE (MSI-7)	–	X	–	–
MAB8705	p3-2H2-21-9	Flavivirus	Dengue 1-4	–	–	X	–
MAB8760	G1G2	Bunyavirus	La Crosse (G1/G2)	–	–	–	X



Catalogue No. MAB947 reacts with the Coxsackievirus A9. Neutralizes Coxsackie virus A9 Griggs strain at a titer of 1:112.

Infected Rhabdomyosarcoma cells detected by indirect fluorescence method using fluorescein-conjugated anti-mouse secondary antibody and Evans Blue counterstain.



Catalogue No. MAB810 Cytomegalovirus (CMV), reacts with an immediate early non-structural antigen of 68-72 kDa.

The immunogen used is affinity purified immediate early antigen from MRC-5 cells infected with CMV AD169 (ATCC).

A. Direct immunofluorescence detection of Cytomegalovirus (CMV) in human lung tissue using Catalogue No. MAB810 directly conjugated with FITC.

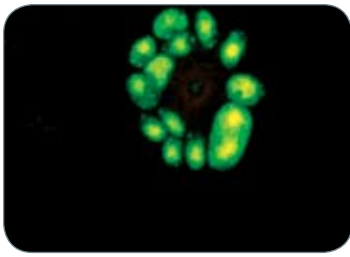
B. Catalogue No. MAB810 detection of Cytomegalovirus (CMV) in infected MRC-5 (human diploid fibroblast) cells by indirect fluorescence method using fluorescein-conjugated anti-mouse secondary antibody. Nuclear-specific fluorescence.

Ordering Information

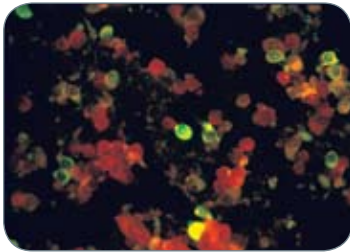
Description	Applications	Format	Host	Qty	Catalogue No.
Astrovirus	IH, EIA, BLK	Serum	Rabbit	100 µL	AB1138
Bacillus anthracis, Lethal factor, clone BALO105	EIA, WVB	Pur	Ms IgG ₁	100 µg	MAB8085
Bacillus anthracis, spores, clone 2C3	EIA, LF	Pur	Mouse	100 µg	MAB8300
Bacillus anthracis, spore antigen, polyclonal	EIA, IB	Pur	Rb IgG	100 µg	AB1151
Bacillus anthracis, (Ames, Sterne, Vollum, N.H.), polyclonal	EIA, LF	Pur	Goat	100 µg	AB8301
Bacterial Peptidoglycan (PG), clone 3F6B3	IB, IC, EIA	Asc	Ms IgG ₁	100 µL	MAB995
BK Virus Large T Antigen, clone BK-T.1	IH, IP	Asc	Ms IgG _{2a}	100 µL	MAB8505
Candida albicans, strain 36802	EIA, IH	Pur	Ms IgG _{2a}	100 µg	MAB806
Coronavirus, OC43 strain, clone 541-8F	IF	Pur	Ms IgG	100 µg	MAB9012
Coxsackievirus A9, clone 450-11G-8A-5E	IF	Asc	Ms IgG _{2b}	100 µL	MAB947
Coxsackievirus A24, clone 550-3A	IF	Pur	Ms IgG	100 µg	MAB898
Coxsackievirus B Blend	IF	Asc	Ms IgG	100 µL	MAB9410
Coxsackievirus B1, clone 334-4A-8F-3F	IF	Pur	Ms IgG _{2a}	100 µg	MAB944
Coxsackievirus B3, clone 280-5F-4E-5E	IF	Pur	Ms IgG _{2a}	100 µg	MAB948
Coxsackievirus B4, clone 371-3D-7H-6G	IF	Asc	Ms IgG _{2b}	100 µL	MAB941
Cytomegalovirus (CMV), clone 8B1.2	IB, IF, IHC, EIA, FACS	Pur	Ms IgG _{2a}	100 µg	MAB810R
Cytomegalovirus (CMV), clone 8B1.2	IB, IF, IHC, EIA, FACS	Pur	Ms IgG _{2a}	500 µg	MAB810R-500µg
Cytomegalovirus (CMV), clone 8B1.2 (Immediate early)	IB, IH, IH(P), IF(P), EIA, FC	Pur	Ms IgG _{2a}	100 µg	MAB810
Cytomegalovirus (CMV) Immediate Early: Alexa Fluor® 488 Conjugated	IF	Alexa 488	Ms IgG _{2a}	100 µg	MAB810X
Cytomegalovirus (CMV), clone 8B1.2 (Immediate early)	IB, IH, IH(P), IF(P), EIA, FC	Pur	Ms IgG _{2a}	500 µg	MAB810-500µg
Cytomegalovirus (CMV), clone 1G5.2 (Late)	IH(P), IF, FC, not IB	Pur	Ms IgG _{2a}	100 µg	MAB8127
Cytomegalovirus (CMV), clone 2D4.2 (Late)	IB, IH(P), IF	Pur	Ms IgG _{2a}	100 µg	MAB8126
Cytomegalovirus (CMV), clone 6F8.2 (Immediate early)	IB, IC, IH(P), IF	Pur	Ms IgG _{2a}	100 µg	MAB8131
Cytomegalovirus (CMV), clone 7D12.2 (Immediate early)	IB, IF, IC, IH(not P)	Pur	Ms IgG ₁	100 µg	MAB8129

For research use only. Not for diagnostic procedures.

All antibodies are available in bulk quantities. For additional information about these products, visit www.millipore.com.



Detection of Early type B & C antigen of CMV by Catalogue No. MAB8140 by indirect immunofluorescence using anti-mouse FITC conjugated secondary antibody.

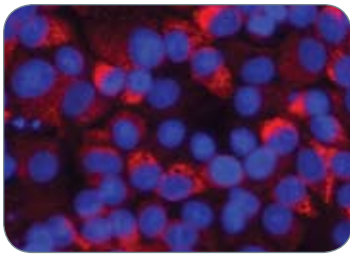


Detection of Echovirus 4 infected cells with Echovirus Blend (Catalogue No. MAB9670).

Description	Applications	Format	Host	Qty	Catalogue No.
Cytomegalovirus (CMV), clone Blend (Immediate early, early, late)	IH, IF	Pur	Ms IgG _{2a}	100 µg	MAB8121
Cytomegalovirus (CMV), clone 5A8.2 (Early, Type B & C)	IB, IH, IF, IC	Pur	Ms IgG ₁	100 µg	MAB8140
Cytomegalovirus (CMV, pp65), clone 12D10	IF	Asc	Ms IgG ₁	100 µL	MAB8770
Dengue Virus Complex	IC, IF	Pur	Ms IgG _{2a}	100 µg	MAB8705
Dengue Virus Type I, clone 15F3-1	IF	Pur	Ms IgG ₁	100 µg	MAB8701
Dengue Virus Type II, clone 3H5-1	IF, HI	Pur	Ms IgG ₁	100 µg	MAB8702
Dengue Virus Type III, clone 5D4-11	IF	Pur	Ms IgG ₁	100 µg	MAB8703
Dengue Virus Type IV, clone 1H10-6	IF, HI	Pur	Ms IgG ₁	100 µg	MAB8704
Eastern Equine Encephalitis (EEE, NJ/60), clone 1A4B-6	IF, EIA, HI	Asc	Ms IgG _{2b}	100 µL	MAB8750
Eastern Equine Encephalitis (EEE), clone 1A4B-6	IF, EIA, HI	Pur	Ms IgG _{2a}	100 µg	MAB8754
Echovirus 6, clone 470-8H-5E-10D	IF	Pur	Ms IgG _{2a}	100 µg	MAB969
Echovirus Blend (Echo 4, 6, 9, 11, 30, 34)	IF, CC	Asc	Ms IgG	100 µL	MAB9670
Enterovirus 70, clone 74-5G	IF	Pur	Ms IgG ₁	100 µg	MAB843
Enterovirus 71 (crossreacts with Coxsackie A16), clone 422-8D-4C-4D	IF	Asc	Ms IgG ₁	100 µL	MAB979
Enterovirus Blend (Enterovirus 70 & 71/Coxsackie A16)	CC, IF	Pur	Ms IgG	100 µg	MAB8430
EBV EA-D-p52/50, clone R3	IB, IF, EIA, IH	Pur	Ms IgG ₁	100 µg	MAB8186
EBV MA-gp350/250, clone 2L10	IB, IF, EIA	Pur	Ms IgG ₁	100 µg	MAB8183
EBV VCA gp 125, clone L2	IB, IF, EIA	Pur	Ms IgG ₁	100 µg	MAB8184
E. coli (Escherichia coli) O2 antigen, clone 1002/224.15	IF, EIA	Pur	Ms IgG ₃	100 µg	MAB706
E. coli (Escherichia coli), O157: H7 clone 9/140.156.152.11	IB, EIA	Pur	Ms IgG ₁	100 µg	MAB8272
Helicobacter pylori, clone 10B10.2	IB, EIA	Pur	Ms IgG ₁	100 µg	MAB921

For research use only. Not for diagnostic procedures.

All antibodies are available in bulk quantities. For additional information about these products, visit www.millipore.com.

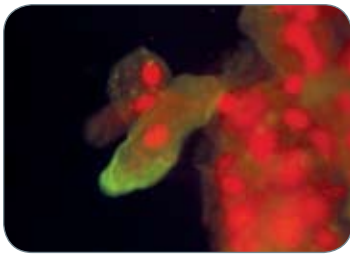


Detection of HCV infected HepG2 human hepatoma cells using Catalogue No. MAB8691. Photo provided by Vadim Bichko.

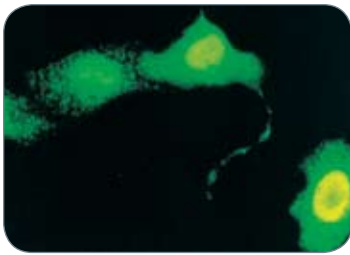
Description	Applications	Format	Host	Qty	Catalogue No.
Hepatitis A Virus	IB, IH, IF, EIA	Pur	Ms IgG ₁	100 µg	MAB8241
Hepatitis B Core Antigen (HBcAg), clone 10E11, aa 2-10	IB, IP, IH, IF, IC, EIA	Asc	Ms IgG ₁	100 µL	MAB16989
Hepatitis B Core Antigen (HBcAg), clone 14E11, aa 134-140	IB, IP, IH, IF, IC, EIA	Asc	Ms IgG _{2b}	100 µL	MAB16990
Recombinant Hepatitis B "E" Antigen	Pos.Cntr.	Pur		100 ug	AG856
Hepatitis B Surface Antigen (HBsAg), clone S35	IP, IH, IF, IC, EIA	Asc	Ms IgG _{2b}	100 µL	MAB16987
Hepatitis B Virus (HBcAg) Core Antigen	Pos.Cntr.	Pur		100 ug	AG854
Hepatitis B Virus (HBV) Surface Antigen Subtype AD	Pos.Cntr.	Pur		100 ug	AG850
Hepatitis B Virus, X-Protein, clone 227, aa 90-115	IB, EIA, IC	Pur	Ms IgG _{1k}	100 µg	MAB8419
Hepatitis B Virus, X-Protein, clone 146, aa 50-88	IB, EIA, IC	Pur	Ms IgG _{1k}	100 µg	MAB8429
Hepatitis C (HCV) Core, aa 70-90	EIA, IF, IHC(P)	Pur	Ms IgG ₁	100 ug	MAB8690
Hepatitis C Virus (HCV), clone NS3	EIA, IF, IHC(P), IB	Pur	Ms IgG ₁	100 ug	MAB8691
Hepatitis C Virus (HCV), clone NS4B	EIA, IF, IHC(P)	Pur	Ms IgG ₁	100 ug	MAB8693
Hepatitis C Virus (HCV), clone NS5A	EIA, IF, IB	Pur	Ms IgG ₁	100 ug	MAB8694
Herpes Simplex Virus (HSV), clone 13D11	IB, EIA, IHC	Pur	Ms IgG ₁	100 ug	MAB8674
Herpes Virus 6, induced early nuclear protein, clone C5	IB, IC, IP, EIA	Pur	Ms IgG	100 µg	MAB8532
Herpes Virus 6, 101kDa protein, clone C3108-103	IB, IH, IF	Pur	Ms IgG ₁	100 µg	MAB8535
HIV Nef, clone AG11	IB, IH, IP, EIA, IF	Pur	Ms IgG ₁	100 µg	MAB899
HIV, p24, clone 7A8.1	IB, IC	Pur	Ms IgG ₁	100 µg	MAB880-A
HIV, p24, clone 7A8.1	IB, EIA	FITC	Ms IgG ₁	100 µg	MAB880-AF
Human Immunodeficiency Virus (HIV-1) ENV Antigen, aa 466-753 (gp41+11aa into gp120)	Pos.Cntr.	Pur		100 ug	AG819
Human Immunodeficiency Virus (HIV-1) GAG Antigen, aa 77-436 p24 recombinant fragment	Pos.Cntr.	Pur		100 ug	AG817
HTLV I, p19 & p28 & gag, clone 2E1-1	EIA	Asc	Ms IgG	100 µL	MAB8111

For research use only. Not for diagnostic procedures.

All antibodies are available in bulk quantities. For additional information about these products, visit www.millipore.com.

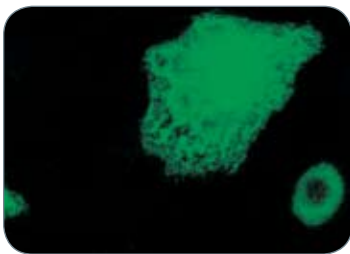


Influenza A infected epithelial cells stained with Influenza A typing reagent containing the same clones as Catalogue No. MAB8251. MAB8251 reacts with all subtypes of Influenza A (H1N1, H2N2, H3N2 and H5N1) and is specific to the nucleoprotein antigen.



Catalogue No. MAB8255 is specific for Influenza A H3 antigen. Reacts strongly with the following H3N2 strain: A/Shanghai/11/87. No reactivity shown with the following H3N2 strain: A/Wuhan/359/95.

Influenza A detection in infected primary monkey kidney cells (PMK's) by indirect immunofluorescence method using fluorescein-conjugated anti-mouse secondary antibody.



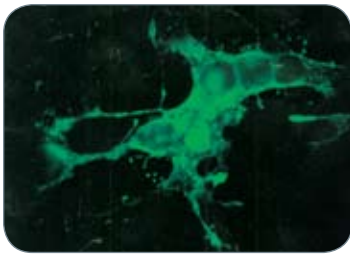
Catalogue No. MAB8671 is specific for Influenza B. It reacts with all strains of Influenza B tested.

Influenza B detection in infected PMK's by indirect immunofluorescence method, using fluorescein-conjugated anti-mouse secondary antibody.

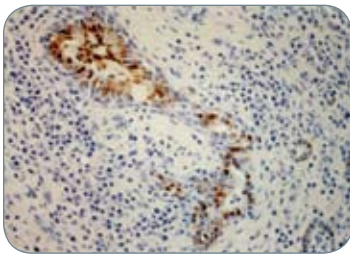
Description	Applications	Format	Host	Qty	Catalogue No.
Influenza A Blend, clone A1 and A3	CC, IF	Asc	Ms IgG	100 µL	MAB8251
Influenza A, clone A1	IF	Pur	Ms IgG _{2a}	100 µg	MAB8257
Influenza A, clone A1	IF	FITC	Ms IgG _{2a}	500 µg	MAB8257F
Influenza A, clone A3	IF	Pur	Ms IgG ₁	100 µg	MAB8258
Influenza A, clone A3	IF	Pur	Ms IgG ₁	500 µg	MAB8258-5
Influenza A, clone A3, FITC Conjugated	IF	FITC	Ms IgG ₁	100 ug	MAB8258F
Influenza A, clone A3, Biotinylated	IF	Biotin	Ms IgG ₁	100 ug	MAB8258B
Influenza A, clone A3, Biotinylated	IF	Biotin	Ms IgG ₁	500 ug	MAB8258B-5
Influenza A, H-1 Antigen, clone 58AB7-19-18	IF	Pur	Ms IgG ₁	100 µg	MAB8252
Influenza A, H-1 Antigen, clone 58CE8-1-5	IF	Pur	Ms IgG ₁	100 µg	MAB8253
Influenza A, H-3 Antigen, clone 30-2F11-F7-A5	IF	Pur	Ms IgG _{2a}	100 µg	MAB8254
Influenza A, H-3 Antigen, clone 62ID5-11	IF	Pur	Ms IgG	100 µg	MAB8255
Influenza A, H1, clone 9B3.2	IF	Pur	Ms IgG _{2a}	100 ug	MAB8261
Influenza A, H1N1 Antigen, clone 9B3.2	IF	Asc	Ms IgG _{2a}	100 µL	MAB8256
Influenza A Virus, polyclonal	IF, EIA, IB, IHC	Serum	Gt	1 mL	AB1074
Influenza B, clone 22D5-12-13	IF	Pur	Ms IgG _{2a}	100 µg	MAB8671
Influenza B, clone B2	IF	Pur	Ms IgG ₁	100 µg	MAB8259
Influenza B, polyclonal	IB, IF, IH, EIA	Pur	Goat	1 mL	AB1058
Influenza B Blend, clone B2 and B4	CC, IF	Asc	Ms IgG ₁	100 µL	MAB8661
Influenza B, clone B4	IF	Pur	Ms IgG ₁	100 µg	MAB8260

For research use only. Not for diagnostic procedures.

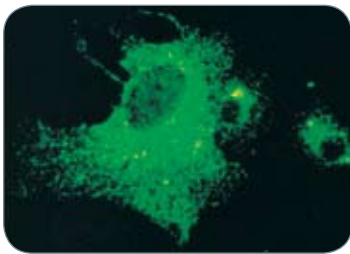
All antibodies are available in bulk quantities. For additional information about these products, visit www.millipore.com.



Catalogue No. MAB8910 (Measles matrix protein) and Catalogue No. MAB8906 (Measles nucleoprotein) blended together to detect Measles in infected monkey kidney cells by indirect immunofluorescence method, using fluorescein-conjugated anti-mouse secondary antibody.



Mouse anti-mycoplasma bovis (Catalogue No. MAB970 and Catalogue No. MAB9701) infected bronchial mucosa with mycoplasma antigen accumulation.



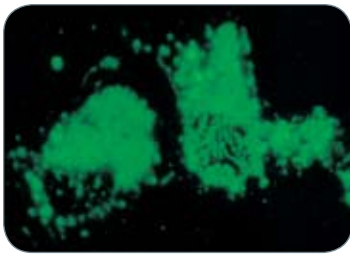
Catalogue No. MAB834-1 Parainfluenza 1 is specific for the FO/F1 fusion protein common to all parainfluenza 1 strains. This monoclonal exhibits no cross-reactivity to Parainfluenza 2 or 3. Applications are ELISA and indirect immunofluorescence.

Detection of Parainfluenza 1, strain C35 in infected PMK's using MAB834-1 and indirect fluorescence.

Description	Applications	Format	Host	Qty	Catalogue No.
Japanese Equine Encephalitis, clone 6B4A-10 (West-Nile Reactive)	IF, EIA	Pur	Ms IgG _{2a}	100 µg	MAB8743
Kaposin (HHV-8)	IB, IP, IC	Pur	Rt IgG ₁	100 µg	MAB3736
Listeria Monocytogenes, clone P6007	IB, EIA	Pur	Ms IgG _{1k}	100 µg	MAB8001
Measles, Blend, clone CV1, 4, 8, 9	CC, IF	Asc	Ms IgG	100 µL	MAB8920
Measles (Rubeola), nucleoprotein, clone 83KKII	IF, EIA	Pur	Ms IgG ₁	100 µg	MAB8906
Measles, nucleoprotein, FITC	EIA	FITC	Ms IgG ₁	100 µg	MAB8906F
Measles, nucleoprotein, Biotinylated	EIA	Biotin	Ms IgG ₁	100 µg	MAB8906B
Measles, hemagglutinin (Blend), clone CV1, CV4	IF, IH(P)	Asc	Ms IgG ₁	100 µL	MAB8905
Measles, matrix protein (Blend), clone CV8, CV9	IF	Pur	Ms IgG	100 µL	MAB8910
Metapneumovirus, (MPV), clone 1B7	IF, EIA,	Pur	Ms IgG _{2a}	100 µg	MAB8510
Metapneumovirus, (MPV), clone 2D7	IF, EIA,	Pur	Ms IgG _{2b}	100 µg	MAB8515
Mumps, Blend	IF, EIA, IB	Pur	Ms IgG	100 µg	MAB846
Mycobacterium bovis (M2/M3 strain)	IB, EIA, IH, IH(P)	Asc	Ms IgG _{1k}	100 µL	MAB970
Papillomavirus (HPV-16), E7 protein, clone TVG 701Y	EIA, IB, IHC, FC	Pur	Ms IgG _{2a}	100 µg	MAB8680
Papillomavirus (HPV), 1, 6, 11, 16, 18, 31	IB, IH, EIA	Pur	Ms IgG	100 µg	MAB837
Papillomavirus (HPV), 16, 18, E6, Early Protein, clone C1P5	IH	Pur	Ms IgG ₁	100 µg	MAB874
Papillomavirus (HPV-16), L1, Late Protein, clone Cam-vir-1	IB, IH(P), IP	Pur	Ms IgG _{2a}	100 µg	MAB885

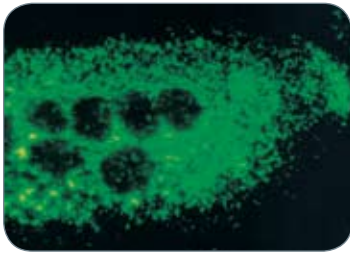
For research use only. Not for diagnostic procedures.

All antibodies are available in bulk quantities. For additional information about these products, visit www.millipore.com.



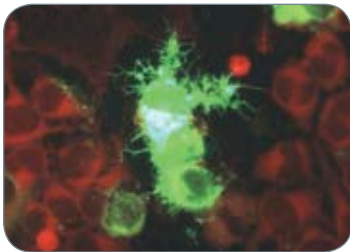
Catalogue No. MAB844-1, Parainfluenza 2, is specific for the HN protein common to all parainfluenza 2 strains. There is no cross-reactivity to Parainfluenza 1, 3, or 4. Applications are ELISA and indirect immunofluorescence. This antibody is not suggested for use in immunoprecipitation.

Detection of Parainfluenza 2, strain Greer in infected PMK's using indirect fluorescence with Catalogue No. MAB844-1.



Catalogue No. MAB855-1 (Parainfluenza 3) is specific for the HN protein, common to all Parainfluenza 3 strains. Exhibits no cross-reactivity to Parainfluenza 1 or 2. Applications are ELISA at 1:800 and indirect immunofluorescence at 1:100-1:200 (fresh frozen tissue sections).

Detection of Parainfluenza 3, strain C243, in infected PMK's, using immunofluorescence with Catalogue No. MAB855-1.

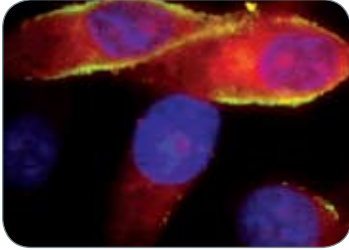
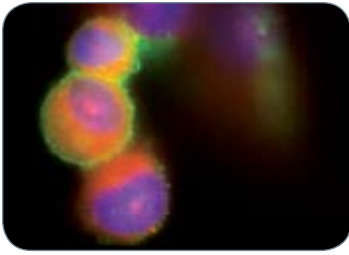


Glycoprotein staining of NA cells infected with several multiplicities of VRG stained with Catalogue No. MAB8727, diluted 1:100 in PBS, with secondary FITC labeled goat-anti mouse IgG conjugate read at 400X. Photo provided by Robert Rudd, NYDOH Rabies Lab.

Description	Applications	Format	Host	Qty	Catalogue No.
Parainfluenza 1, clone 251/12A	IF, EIA	Asc	Ms IgG _{2a}	100 µL	MAB834-1
Parainfluenza 1, clone 253/9D	IF, EIA	Pur	Ms IgG _{2a}	100 µg	MAB834-2
Parainfluenza 2, clone 231/9F	IF, EIA	Pur	Ms IgG ₁	100 µg	MAB844-1
Parainfluenza 2 Blend, clones 233/9A and 231/9F	IF, EIA	Pur	Ms IgG _{1k}	100 µg	MAB844-3
Parainfluenza 2 & 3, polyclonal	IB, IF, IH, EIA	Pur	Goat	1 mL	AB1070
Parainfluenza 3, clone 240/12D	IF, EIA	Pur	Ms IgG _{2b}	100 µg	MAB855-1
Parainfluenza 3, clone 260/10B	IF, EIA	Asc	Ms IgG ₁	100 µL	MAB855-2
Parainfluenza 3, (Blend of MAB855-1 and MAB855-2)	IF, EIA	Pur	Ms IgG	100 µg	MAB855-3
Parainfluenza 1, 2, 3 Blend	CC, IF, EIA	Asc	Ms IgG	100 µL	MAB819
Parainfluenza 4, clone 531-3F	IF, IB, EIA	Asc	Ms IgG _{2a}	100 µL	MAB8781
Parvovirus B19, clone 521-5D	IH(P), IH, EIA, IC	Pur	Ms IgG	100 µg	MAB8292
Parvovirus B19, clone 521-5D, Biotinylated	EIA	Biotin	Ms IgG	100 µg	MAB8292B
Parvovirus B19, clone R92F6	IB, IF, EIA, IH(P)	Pur	Ms IgG ₁	100 µg	MAB8293
Poliovirus Type 1, clone 583-G8-G2-A4	IF	Asc	Ms IgG ₁	100 µL	MAB8560
Poliovirus Blend	IF	Asc	Ms IgG	100 µL	MAB8566
Rabies, clone C15-62-97-3 (ASR)	IF	Pur	Ms IgG	100 µg	MAB8723
Rabies, clone CR54-6229-54 (ASR)	IF	Pur	Ms IgG	100 µg	MAB8717
Rabies Glycoprotein, clone 24-3F-10	IF	Pur	Ms IgG _{2a}	100 ug	MAB8727
Rabies, N-nucleoprotein, clone C18-62-143-2	EIA, IH, IP	Pur	Ms IgG	100 µg	MAB8724
Reovirus Type 3, hemagglutinin, clone 9BG5	IF, Neut	Asc	Ms IgG _{2a}	100 µL	MAB994
Respiratory Syncytial Virus (RSV), clone 130-12H, FITC Conjugated	IF	FITC	Ms IgG _{2ak}	500 ug	MAB858-3F-5
Respiratory Syncytial Virus (RSV), clone 131-2G, Biotinylated	IF	Biotin	Ms IgG _{1k}	100 ug	MAB858-2B
Respiratory syncytial virus (RSV), clone 133-1H	IF, EIA	Pur	Ms IgG _{2ak}	100 µg	MAB8262
Respiratory syncytial virus (RSV) (Fusion), clone 133-1H (all A & B)	IF, EIA	Asc	Ms IgG _{2a}	100 µL	MAB858-1
Respiratory syncytial virus (RSV, Glycoprotein), clone 131-2G (all A & B)	IF, EIA	Pur	Ms IgG ₁	100 µg	MAB858-2
Respiratory syncytial virus (RSV, Nucleoprotein), clone 130-12H	IF, EIA	Pur	Ms IgG _{2a}	100 µg	MAB858-3
Respiratory syncytial virus (RSV) Pan (Blend of 858-1, 2, 3)	CC, EIA	Asc	Ms IgG	100 µL	MAB858-4
Respiratory syncytial virus (RSV Fusion), clone 102-10B (All B)	EIA, IF	Pur	Ms IgG _{1k}	100 µg	MAB8582
Respiratory syncytial virus (RSV Fusion), clone 143-6C	IF	Pur	Ms IgG	100 µL	MAB8594

For research use only. Not for diagnostic procedures.

All antibodies are available in bulk quantities. For additional information about these products, visit www.millipore.com.



Catalogue No. AB1128, goat anti-respiratory syncytial virus (RSV) polyclonal antibody is specific to all RSV types. This polyclonal antibody does not react with Para 1-3, Influenza A & B and Adenovirus by IFA. Non-reactive with uninfected HEp-2 cells and WI-38 cells. Known applications are indirect immunofluorescence: ELISA: 1:10,000 and Fusion inhibition >1:256

Mouse macrophage cells (RAW 264.7) grown on glass coverslips and infected with respiratory syncytial virus. RSV infected cells were fixed with ice-cold acetone, blocked with 1% BSA in PBS, pH 7.4 and double stained with goat anti-RSV polyclonal antibody (AB1128) and mouse anti-human ICAM-1 (Intercellular adhesion molecule-1) (Catalogue No. MAB 2145) for 1hr at 37C. The cells were subsequently incubated with secondary antibodies: rabbit anti-goat IgG: PE (phycoerythrin) conjugate and sheep anti-mouse IgG-FITC conjugate, and were finally mounted in DAPI antifade (nuclear stain). RSV is distributed on the cell surface and in the cytoplasm (red fluorescence), ICAM-1 is localized mostly on the cell surface (green fluorescence), nuclei are visualized by staining with DAPI (blue fluorescence).

Description	Applications	Format	Host	Qty	Catalogue No.
Respiratory syncytial virus (RSV Fusion), clone 131-2A (all A & B)	IF, EIA	Pur	Ms IgG _{2ak}	100 µg	MAB8599
Respiratory syncytial virus (RSV), polyclonal	Neut, EIA, IF, IH(P)	Pur	Goat	1 mL	AB1128
Respiratory syncytial Virus (RSV), polyclonal	IF	FITC	Goat	1 mL	AB1128F
Rotavirus, polyclonal	IB, IF, IH, EIA	Pur	Goat	1 mL	AB1129
Rotavirus, clone A3M4	EIA	Asc	Ms IgG	100 µL	MAB8670
Rubella, polyclonal	IB, IF, HI, EIA	Pur	Goat	1 mL	AB1060
Rubella, capsid, clone C8	IF	Asc	Ms IgM	100 µL	MAB9251
Rubella, E1, clone E1-20	IF	Pur	Ms IgG _{2a}	100 µg	MAB925
Rubella, E1, clone 2G10.2	IB, IF, EIA	Pur	Ms IgG ₁	100 µg	MAB926
Shigella sonnei, clone 1028/437	IF, EIA	Pur	Ms IgG ₃	100 µg	MAB755
St. Louis Encephalitis (SLE, MSI-7), clone 6B6C-1 (West-Nile Reactive)	IF, HI, EIA, Neut	Pur	Ms IgG _{2a}	100 µg	MAB8744
Staphylococcus aureus	EIA	Asc	Ms IgM	100 µL	MAB930
SV40 Large T Antigen	IP	Asc	Ms IgG ₁	100 µL	MAB986
Toxoplasma gondii, (RH strain)	IH, EIA	Pur	Ms IgG _{1k}	100 µg	MAB802
Varicella-zoster Virus, Glycoprotein 1, (HZ strain)	IB, IH, IP, IF	Pur	Ms IgG _{2b}	100 µg	MAB8612
Varicella-zoster Virus, Immediate Early Gene 62, (HZ strain)	IB, IH, IP, IF	Pur	Ms IgG ₁	100 µg	MAB8616
Varicella-zoster Virus, Nucleocapsid Protein, (HZ strain)	IH, IP, IF	Asc	Ms IgG ₁	100 µL	MAB8614
Venezuelan Equine Encephalitis (VEE, Fe3-7c), clone 1A6C.3	IF, EIA, IH	Asc	Ms IgG _{2a}	100 µL	MAB8736
Venezuelan Equine Encephalitis (VEE), clone 1A3A-9	IH, IF, EIA, Neut	Pur	Ms IgG _{2a}	100 µg	MAB8767
Venezuelan Equine Encephalitis (VEE), clone 1A3B-7	IH, IF, EIA, Neut	Pur	Ms IgG _{2a}	100 µg	MAB8755
Venezuelan Equine Encephalitis (VEE, PTF-39), clone 1A3B.7	IH, EIA, Neut	Asc	Ms IgG _{2a}	100 µL	MAB8747
Venezuelan Equine Encephalitis (VEE), TC83 vaccine, clone 5B4D.6	IF, EIA	Asc	Ms IgG _{2a}	100 µL	MAB8731
West Nile Virus / Kunjin, envelope, clone 3.67G	IF, IB, IH, EIA	Pur	Ms IgG ₁	100 µg	MAB8150
West Nile Virus / Kunjin, envelope, clone 3.91D	IF, IB, IH, EIA	Asc	Ms IgG ₃	100 µg	MAB8151
West Nile Virus / Kunjin, NS1, clone 3.1112G	IF, IB, IH, EIA	Asc	Ms IgM	100 µg	MAB8152
Western Equine Encephalitis (WEE, McMillan), clone 2A6C.7	IF, HI, EIA	Asc	Ms IgG _{2a}	100 µL	MAB8742
Western Equine Encephalitis (WEE), clone 2a3d-5	IF, EIA, IH, Neut	Pur	Ms IgG _{2a}	100 µg	MAB8746
Yellow Fever Virus, clone 2D12.A	HI, Neut	Asc	Ms IgG _{2a}	100 µL	MAB984

For research use only. Not for diagnostic procedures.

All antibodies are available in bulk quantities. For additional information about these products, visit www.millipore.com.

MILLIPORE

Millipore, Upstate and Chemicon are registered trademarks of Millipore Corporation.
Millipore Lit. No. PB1675ENUS Rev. A Printed in U.S.A. 10/07 07-440
Copyright 2007 Millipore Corporation. Billerica, MA 01821 U.S.A.