

pTriEx-5 Vector

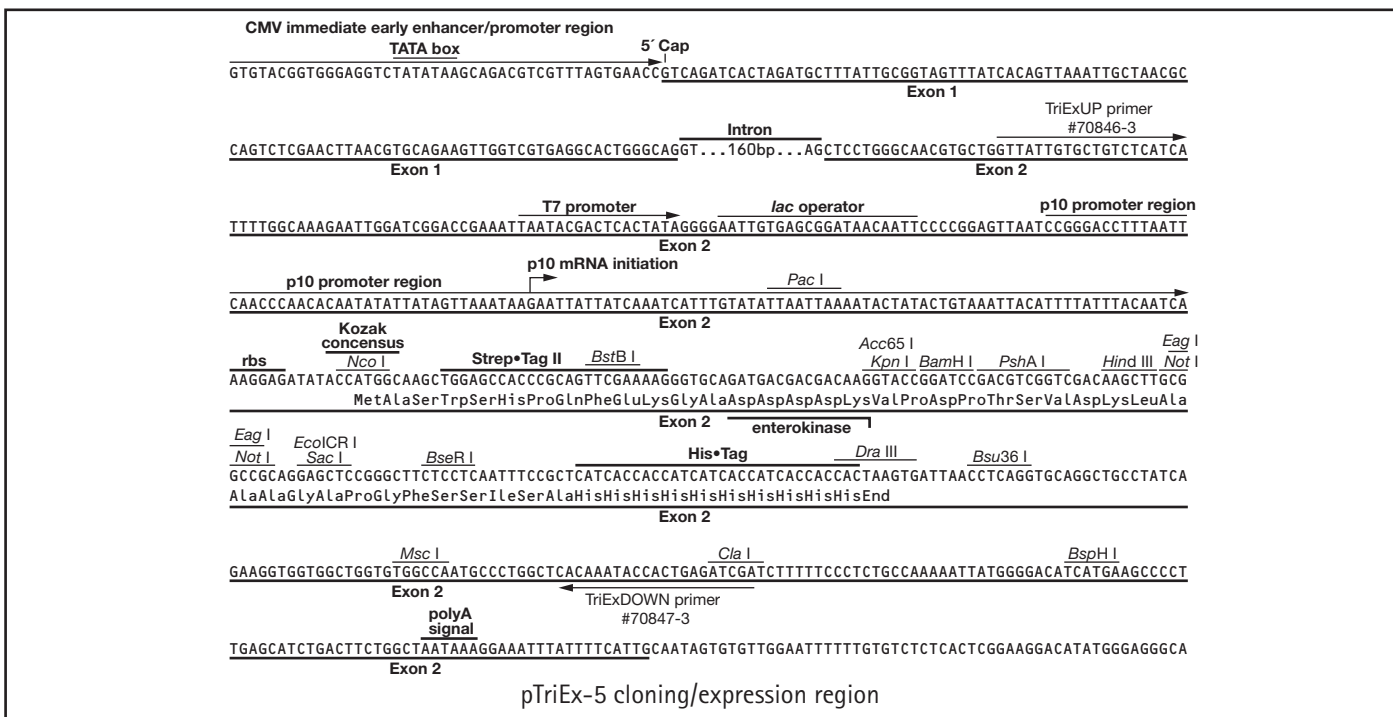
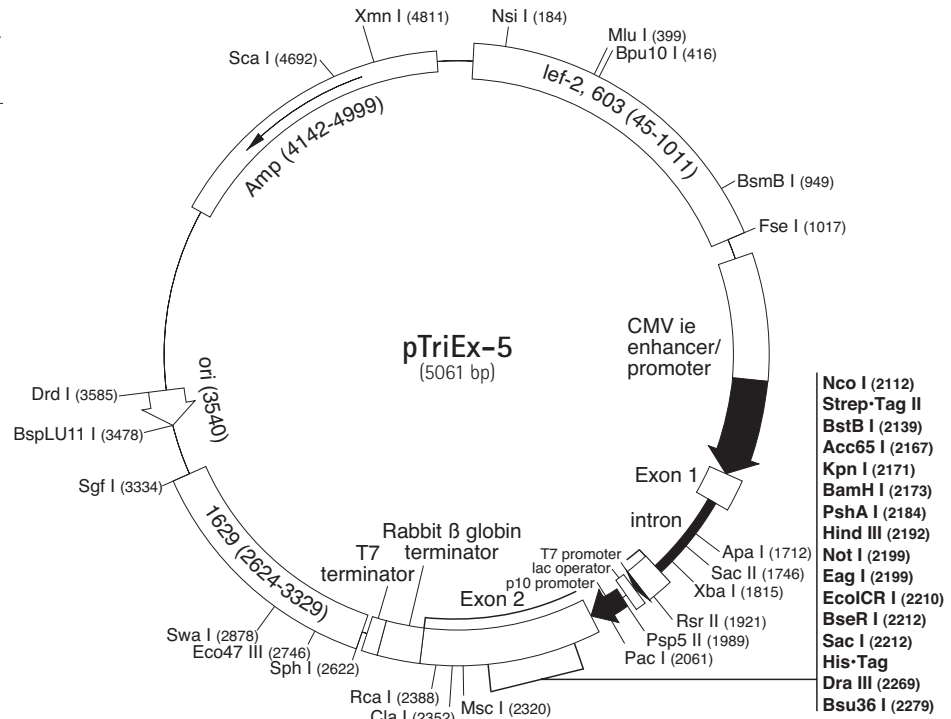
The pTriEx™ vectors¹ are uniquely designed to allow expression in *E. coli*, insect cells and vertebrate cells using a single recombinant plasmid. Transient vertebrate expression is mediated by the CMV immediate early enhancer and promoter. pTriEx-5 contains flanking baculovirus sequences for generation of recombinant baculoviruses, and expression in infected insect cells is driven by the baculovirus very late p10 promoter. Expression in *E. coli* is regulated by the tightly controlled T7lac promoter.

pTriEx-5 carries an N-terminal Strep•Tag® II coding sequence (1) followed by a recognition site for enterokinase. The multiple cloning region is followed by an optional C-terminal His•Tag® coding sequence. The presence of two "gentle elution" tags at both the N- and C-terminus is ideal for dual purification strategies designed to isolate full-length fusion proteins (2). Unique restriction sites are shown on the circle map.

¹Covered by U.S. Patent no. 6,589,783.

- Skerra, A., Schmidt, T.G.M. (2000) *Meth. Enzymol.* 326, 271-304.
- Fiedler, M., Horn, C., Bandtlow, C., Schwab, M.E. (2002) *Protein Eng.* 15, 931-941.

	Cat No.
pTriEx-5 DNA	71558-3
pTriEx-5 sequence landmarks	
CMV ie enhancer/promoter	1021-1597
Vertebrate transcription start	1598
T7 promoter	1931-1947
T7 transcription start	1948
lac operator	1952-1972
p10 promoter region	1986-2099
p10 transcription start	2030-2031
Strep•Tag II coding sequence	2123-2146
Multiple cloning sites (<i>Kpn</i> I - <i>Dra</i> III)	2167-2272
His•Tag coding sequence	2237-2266
Rabbit globin terminator	2354-2590
<i>bla</i> (Amp ^R)	4142-4999
pUC ori	3540



pTriEx-5 Restriction Sites

TB434 0905

Enzyme	# Sites	Locations	Enzyme	# Sites	Locations			
AatII	7	1140 1193 1276 1462 1583	Ecil	4	1249 3540 3685 4355			
Acc65I	1	2183 3069	Eco57I	2	4025 4879			
AccI	2	244 2187	Eco57MI	4	2143 4025 4282 4879			
AclI	2	4438 4811	EcoCRI	1	2210			
AfeI	1	2746	EcoO109I	3	1709 1989 2580			
AfIII	4	399 3139 3289 3478	FseI	1	1017			
AhdI	2	499 4212	Fspl	2	659 4434			
AlwNI	2	1865 3893	HaeII	2	2748 3725			
ApaI	1	1712	HincII	3	245 1531 2188			
ApaLI	2	3791 4879	HindIII	1	2192			
AseI	5	1022 1930 2057 3273 4384	KpnI	1	2171			
AsiSI	1	3334	MfeI	2	2777 3122			
AvaI	1	1732	MluI	1	399			
BamHI	1	2173	MscI	1	2320			
BanI	3	1480 2167 4160	MsiI	7	950 1380 1837 2517 4464			
BanII	2	1712 2212			4623 4982			
BbsI	2	498 3247	NaeI	2	783 1015			
BbvCI	1	416	NcoI	1	2112			
BceAI	2	1769 3979	NdeI	4	1249 2488 2548 2556			
Bcgl	3	2163 2211 4751	NgoMIV	2	781 1013			
BciVI	2	582 3680	NotI	1	2199			
BfrBI	1	182	NsiI	1	184			
BglI	4	1105 1227 1298 4332	NspI	2	2622 3482			
Bme1580I	3	1712 3795 4883	PacI	1	2061			
BmgBI	1	3292	PciI	1	3478			
Bmrl	3	1304 1700 4252	PfoI	1	1985			
Bpml	2	2143 4282	Ppil	1	4844			
Bpu10I	1	416	PpuMI	1	1989			
BpuEI	6	2420 2617 3568 3866 4107	PshAI	1	2183			
		4817	PsiI	4	320 409 2813 3370			
BsaAI	2	1355 2788	PspOMI	1	1708			
BsaHI	10	495 1137 1190 1273 1459	Psrl	1	3044			
		1580 2180 3066 3266 4749	PvuI	2	3334 4582			
Bsal	2	285 4273	RsrII	1	1921			
BsaWI	5	833 2170 3683 3830 4503	SacI	1	2212			
BsaXI	1	171	SacII	1	1746			
BseRI	1	2212	Sall	2	243 2186			
BseYI	1	3781	Scal	1	4692			
BsgI	3	1689 2169 2305	Sfcl	5	1857 1943 3742 3933 4453			
BsiEI	7	2187 2202 3334 3394 3817	SmlI	6	2399 2596 3583 3845 4122			
		4582 4731			4832			
BsiHKA1	4	2212 3795 4798 4883	SnaBI	2	1355 2788			
BsmAI	8	285 949 1449 1659 1897	SphI	1	2622			
		2474 4273 5049	Sspl	4	425 2882 3079 5016			
BsmBI	1	949	StyI	2	2112 2575			
BsmFI	8	1190 1341 1509 1764 1783	Swal	1	2878			
		2002 2396 3194	TaqII	5	1938 2173 3380 4560 4745			
Bsp1286I	5	1712 2212 3795 4798 4883	TatI	9	49 768 1232 1312 1345			
BspCNI	6	408 2292 2338 3765 4182			1396 2731 3118 4690			
		4701	TspGWI	3	247 4652 4994			
BspHI	1	2388	XbaI	1	1815			
BspMI	1	1686	XmnI	1	4811			
BsrBI	4	1728 1960 2234 3411	ZraI	7	1138 1191 1274 1460 1581			
BsrDI	4	79 2439 4273 4447			2181 3067			
BsrFI	5	42 781 1013 1806 4292	Enzymes that do not cut pTriEx-5:					
BsrGI	3	49 768 3118	AarI,	AfII,	AgeI,	AleI,	Alol,	AscI,
BssSI	2	3650 4876	AvrII,	BaeI,	BbeI,	BclI,	BglII,	BlpI,
BstAPI	1	2549	BmtI,	BpII,	BsaBI,	BsiWI,	BsmI,	BspEI,
BstBI	1	2139	BssHII,	BstEII,	BstZ17I,	EcoNI,	EcoRI,	EcoRV,
BstXI	2	167 2328	FalI,	FspAI,	HpaI,	KasI,	NarI,	NheI,
BstYI	5	2173 4118 4129 4837 4854	NruI,	PfIMI,	PmeI,	PmlI,	PstI,	PvuII,
Bsu36I	1	2279	SanDI,	SapI,	SbfI,	SexAI,	SfiI,	SfoI,
BtgI	2	1743 2112	SgrAI,	Smal,	SpeI,	SrfI,	StuI,	Tth111I,
BtsI	2	4612 4632	XcmI,	XhoI,	XmaI			
Clal	1	2352						
DraI	4	429 2508 2878 4789						
DraIII	1	2269						
DrdI	1	3585						
EaeI	4	1011 2199 2318 4600						
EagI	1	2199						
EarI	3	51 547 5007						