

Product Information

**MSK1, active, GST tagged, human
PRECISIO® Kinase
recombinant, expressed in Sf9 cells**

Catalog Number **M0699**
Storage Temperature -70°C

Synonyms: RPS6KA5, RLPK, MSPK1, MGC1911,
mitogen and stress-activated protein kinase-1

Product Description

MSK1 contains 2 protein kinase domains and shares 43% protein sequence identity with the MAPKAPK1 isoforms. Northern blot analysis shows MSK1 is expressed in all tissues, with the highest level of expression in brain, muscle, and placenta. Immunoelectron microscopy localized MSK1 to the nucleus. MSK1 is activated *in vitro* and *in vivo* by either ERK or SAPK2 proteins. MSK1 rather than MAPKAP-K1 or MAPKAP-K2/K3, mediates activation of the cAMP response element-binding protein and activating transcription factor-1 by either growth factors or stress signals. By radiation hybrid analysis, the RPS6KA5 gene has been mapped to chromosome 14q31-q32.

This recombinant product was expressed by baculovirus in Sf9 insect cells using an N-terminal GST-tag. The gene accession number is NM 004755. It is supplied in 50 mM Tris-HCl, pH 7.5, with 150 mM NaCl, 0.25 mM DTT, 0.1 mM EGTA, 0.1 mM EDTA, 0.1 mM PMSF, and 25% glycerol.

Molecular mass: ~120 kDa

Precautions and Disclaimer

This product is for R&D use only, not for drug, household, or other uses. Please consult the Safety Data Sheet for information regarding hazards and safe handling practices.

Storage/Stability

The product ships on dry ice and storage at -70°C is recommended. After opening, aliquot into smaller quantities and store at -70°C . Avoid repeated handling and multiple freeze/thaw cycles.

Figure 1.
SDS-PAGE Gel of Typical Lot:
 $\geq 70\%$ (SDS-PAGE, densitometry)

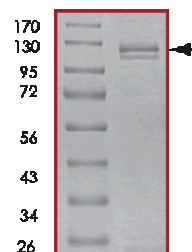
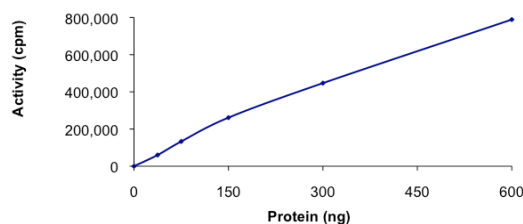


Figure 2.
Specific Activity of Typical Lot:
75–103 nmole/min/mg



Procedure

Preparation Instructions

Kinase Assay Buffer – 25 mM MOPS, pH 7.2, 12.5 mM glycerol 2-phosphate, 25 mM MgCl_2 , 5 mM EGTA, and 2 mM EDTA. Just prior to use, add DTT to a final concentration of 0.25 mM.

Kinase Dilution Buffer – Dilute the Kinase Assay Buffer 5-fold with a 50 ng/ μL BSA solution.

Kinase Solution – Dilute the active MSK1 (0.1 µg/µl) with Kinase Dilution Buffer to the desired concentration.

Note: The specific activity plot may be used as a guideline (see Figure 2). It is recommended the researcher perform a serial dilution of active MSK1 for optimal results.

10 mM ATP Stock Solution – Dissolve 55 mg of ATP in 10 ml of Kinase Assay Buffer. Store in 200 µl aliquots at –20 °C.

γ-³²P-ATP Assay Cocktail (250 µM) – Combine 5.75 ml of Kinase Assay Buffer, 150 µl of 10 mM ATP Stock Solution, and 100 µl of γ-³²P-ATP (1 mCi/100 µl). Store in 1 ml aliquots at –20 °C.

Substrate Solution – Dissolve the synthetic peptide substrate (KRRRLSSLRA) in water at a final concentration of 1 mg/ml.

1% phosphoric acid solution – Dilute 10 ml of concentrated phosphoric acid to a final volume of 1 L with water.

Kinase Assay

This assay involves the use of the ³²P radioisotope. All institutional guidelines regarding the use of radioisotopes should be followed.

1. Thaw the active MSK1 Kinase Assay Buffer, Substrate Solution, and Kinase Dilution Buffer on ice. The γ-³²P-ATP Assay Cocktail may be thawed at room temperature.
2. In a pre-cooled microcentrifuge tube, add the following solutions to a volume of 20 µl:
 - 10 µl of Kinase Solution
 - 5 µl of Substrate Solution
 - 5 µl of cold water (4 °C)
3. Set up a blank control as outlined in step 2, substituting 5 µl of cold water (4 °C) for the Substrate Solution.
4. Initiate each reaction with the addition of 5 µl of the γ-³²P-ATP Assay Cocktail, bringing the final reaction volume to 25 µl. Incubate the mixture in a water bath at 30 °C for 15 minutes.
5. After the 15 minute incubation, stop the reaction by spotting 20 µl of the reaction mixture onto an individually precut strip of phosphocellulose P81 paper.

6. Air dry the precut P81 strip and sequentially wash in the 1% phosphoric acid solution with constant gentle stirring. It is recommended the strips be washed a total of 3 times of ~10 minutes each.
7. Set up a radioactive control to measure the total γ-³²P-ATP counts introduced into the reaction. Spot 5 µl of the γ-³²P-ATP Assay Cocktail on a precut P81 strip. Dry the sample for 2 minutes and read the counts. Do not wash this sample.
8. Count the radioactivity on the P81 paper in the presence of scintillation fluid in a scintillation counter.
9. Determine the corrected cpm by subtracting the blank control value (see step 3) from each sample and calculate the kinase specific activity

Calculations:

1. Specific Radioactivity (SR) of ATP (cpm/nmole)

$$SR = \frac{\text{cpm of 5 } \mu\text{l of } \gamma\text{-}^{32}\text{P-ATP Assay Cocktail}}{\text{nmole of ATP}}$$

cpm – value from control (step 7)

nmole – 1.25 nmole (5 µl of 250 µM ATP Assay Cocktail)

2. Specific Kinase Activity (SA) (nmole/min/mg)

$$\text{nmole/min/mg} = \frac{\Delta\text{cpm} \times (25/20)}{SR \times E \times T}$$

SR = specific radioactivity of the ATP (cpm/nmole ATP)

Δcpm = cpm of the sample – cpm of the blank (step 3)

25 = total reaction volume

20 = spot volume

T = reaction time (minutes)

E = amount of enzyme (mg)

References

1. Deak, M. et al., Mitogen- and stress-activated protein kinase-1 (MSK1) is directly activated by MAPK and SAPK2/p38, and may mediate activation of CREB. EMBO J., **17**, 4426-4441 (1998).
2. Jiang, C. et al., Assignment of a member of the ribosomal protein S6 kinase family, RPS6KA5, to human chromosome 14q31-q32.1 by radiation hybrid mapping. Cytogenet. Cell Genet., **87**, 261-261 (1999).

PRECISIO is a registered trademark of Sigma-Aldrich Co. LLC.

JB,BKR,MAM 04/14-1