

## User Guide

# DirectLoad™ Plus 100 bp High DNA Ladder

**DPLUS-100H****500 µL/vial**

### Storage

-20 °C for up to 24 months, 4 °C for up to 12 months, or room temperature for up to 6 months.

### Description

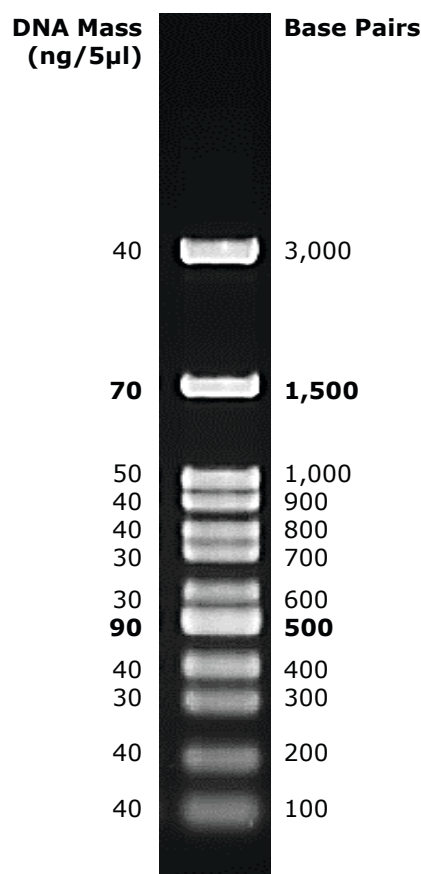
PCR products and double-stranded DNA digested with appropriate restriction enzymes equilibrated to 10 mM Tris-HCl (pH 8.0) and 10mM EDTA after phenol extraction to yield 12 fragments, suitable for use as molecular weight standards for agarose gel electrophoresis. The DNA includes fragments ranging from 100-3,000 base pairs. The 500 and 1,500 base pair bands have increased intensity to serve as reference points.

**Note:** The approximate mass of DNA in each band is supplied for estimating the mass of DNA in comparably intense samples of similar size.

|                        |                                  |
|------------------------|----------------------------------|
| <b>Range</b>           | 100-3000 bp                      |
| <b>Number of bands</b> | 12                               |
| <b>Concentration</b>   | 108 µg/mL                        |
| <b>Tracking dye</b>    | Orange G and<br>Xylene Cyanol FF |

This product is only suitable for rough estimation of nucleic acid molecular weight.

Suggested Load: 5 µL/well



1.5% TAE agarose gel

## Product Ordering

Purchase online at [SigmaAldrich.com](https://sigmaaldrich.com).

| Description  | Qty            | Catalogue Number        |
|--|----------------|-------------------------|
| DirectLoad™ Plus<br>50 bp DNA Ladder   | 500 µL vial    | DPLUS-50                |
| DirectLoad™ Plus<br>100 bp DNA Ladder  | 500 µL vial    | DPLUS-100               |
| DirectLoad™ Plus<br>100 bp High DNA Ladder                                   | 500 µL vial    | DPLUS-100H              |
| DirectLoad™ Plus<br>100 bp High DNA Ladder<br>with fluorescent<br>DNA stains | 600 µL vial    | DPLUS-100HS             |
| DirectLoad™ Plus<br>1 Kb DNA Ladder  | 500 µL vial    | DPLUS-1K                |
| DirectLoad™ Plus<br>1 Kb DNA Ladder<br>with fluorescent<br>DNA stains        | 600 µL vial    | DPLUS-1KS               |
| BioReagent Ethidium<br>Bromide Solution                                      | 10 mL          | E1510-10ML              |
| BioReagent Agarose, low<br>electroendosmosis (EEO)                           | 50 g           | A9539-50G               |
| pHast Pack™ Tris-Acetate<br>EDTA Buffer, pH 8.3                              | 20 pouches     | PPB008-20PAK            |
| pHast Pack™ Tris-Borate<br>EDTA Buffer, pH 8.3                               | 20 pouches     | PPB009-20PAK            |
| pHast Pack™ Tris-Borate<br>EDTA w/ 1% agarose                                | 20 pouches     | PPB012-20PAK            |
| pHast Pack™ Tris-Acetate<br>EDTA w/ 1% agarose                               | 20 pouches     | PPB013-20PAK            |
| GelRed® Nucleic Acid<br>Stain 3X Water                                       | 4 L            | SCT121                  |
| GelRed® Nucleic Acid<br>Stain 10000X DMSO                                    | 0.5 mL         | SCT122                  |
| GelRed® Nucleic Acid<br>Stain 10000X Water                                   | 0.5 mL         | SCT123                  |
| GelGreen® Nucleic Acid<br>Stain 10000X DMSO                                  | 0.5 mL         | SCT124                  |
| GelGreen® Nucleic Acid<br>Stain 10000X Water                                 | 0.5 mL         | SCT125                  |
| SYBR® Green I<br>Nucleic Acid Gel Stain                                      | 0.5 mL<br>1 mL | S9430-.5ML<br>S9430-1ML |

## Precautions and Disclaimer

This product is for research use only. Please consult the Safety Data Sheet for information regarding hazards and safe handling practices.

### Notice

We provide information and advice to our customers on application technologies and regulatory matters to the best of our knowledge and ability, but without obligation or liability. Existing laws and regulations are to be observed in all cases by our customers. This also applies in respect to any rights of third parties. Our information and advice do not relieve our customers of their own responsibility for checking the suitability of our products for the envisaged purpose.

The information in this document is subject to change without notice and should not be construed as a commitment by the manufacturing or selling entity, or an affiliate. We assume no responsibility for any errors that may appear in this document.

### Contact Information

For the location of the office nearest you, go to [SigmaAldrich.com/offices](https://sigmaaldrich.com/offices).

### Technical Assistance

Visit the tech service page on our web site at [SigmaAldrich.com/techservice](https://sigmaaldrich.com/techservice).

### Standard Warranty

The applicable warranty for the products listed in this publication may be found at [SigmaAldrich.com/terms](https://sigmaaldrich.com/terms).

MilliporeSigma, DirectLoad, pHast Pack and Sigma-Aldrich are trademarks of Merck KGaA, Darmstadt, Germany or its affiliates. All other trademarks are the property of their respective owners. Detailed information on trademarks is available via publicly accessible resources. © 2022 Merck KGaA, Darmstadt, Germany and/or its affiliates. All Rights Reserved.

The life science business of Merck KGaA, Darmstadt, Germany operates as MilliporeSigma in the U.S. and Canada.

**MILLIPORE  
SIGMA**