



# **FlowCollect™ Chemokine Receptor CCR7 Surface Expression Identification kit**

100 Tests

**Cat. No. FCCR700415**

**FOR RESEARCH USE ONLY  
Not for use in diagnostic procedures**

USA & Canada Phone: +1 (800) 437-7500 Fax: +1 (951) 676-9209  
Australia +61 3 9839 2000  
[www.millipore.com](http://www.millipore.com)

---

## Application

The FlowCollect™ GPCR identification kits are designed for flow cytometry applications, which can be used for the identification and quantification of the surface expression level of GPCRs on any cells. The kit uses a GPCR antibody validated for flow cytometry to detect receptor expression, and also includes both positive and negative control cells with well characterized receptor expression levels for the purpose of quantification.

Chemokine receptors are very attractive targets because they are highly expressed on immune cells and regulate leukocyte activation and trafficking. Many of these targets have been indicated to play a key role in certain disease states such as HIV infection, Rheumatoid Arthritis, and Diabetes. The expression levels of these receptors often reflect the different states of infectious diseases and inflammation.

Chemokine receptors are seven transmembrane G-Protein Coupled Receptors (GPCRs). The chemokine receptor family comprises of eighteen GPCR targets, in which ten are CC chemokine receptors, seven are CXC chemokine receptors, and one is a CX<sub>3</sub>C chemokine receptor. Millipore provides 11 GPCR surface identification kits with an initial focus on the chemokine receptor family.

CCR7 is a GPCR that binds to CC chemokine ligands MIP-3β (ELC/CCL19) and 6CKine (CCL21) [5]. These ligands are expressed in the secondary lymphoid organs, and binding to CCR7 expressed in naïve T cells, B cells and dendritic cells directs migration of these cells to sites of antigen presentation [1]. Inhibition of CCR7/ligand interactions inhibits contact sensitivity, delayed type hypersensitivity, and graft versus host disease in experimental models [1,4]. In addition, CCR7 expression by breast cancer, melanoma and other malignant cells are associated with lymph node metastasis [2,3].

The control cells provided in the kit are based on the ChemiScreen™ GPCR stable cell lines available from Millipore. Both the positive and negative control cell lines have been fully characterized using techniques such as radioligand binding assay to determine the receptor number for each cell type [6]. Using this information, the researcher can determine the number of receptors per cell on any given cell type.

---

## Test Principle

Millipore's FlowCollect™ GPCR Surface Identification kit is designed to provide an easier and more efficient way of characterizing GPCR expression on a given cell type of interest. This kit includes optimized buffers and a high affinity, specific antibody capable for detecting the GPCR target in question. Also included in the kit is a secondary antibody conjugate to R-Phycoerythrin, which is a bright fluorochrome ideal for measuring endogenous levels of GPCR expression on native cells. By following the steps outlined in the assay procedure, researchers can easily identify which native cell lines would be suitable for performing secondary assays in support of their structure-activity drug discovery efforts.

Additional test applications include the identification of high, medium, and low expressing cell cultures during the clonal selection process. When a researcher decides to build a stable cell line in-house, it is essential that the clone of choice will provide the GPCR surface expression needed to perform drug screening. Choosing the wrong clone can adversely affect a primary screen if the chosen clone cannot detect lower affinity compounds. This can lead to a lower hit rate, which can result in screening limitations when identifying potential blockbuster compounds.

Another added feature is the ability to quantitatively measure GPCR cell surface expression using flow cytometry as the method for detection. Provided in the kit are two vials of Millipore's ChemiScreen™ GPCR cell lines, serving as assay controls. Using patented technology, Millipore's ChemiScreen™ GPCR cell lines retain high surface expression as illustrated by the relatively high maximal number of binding sites ( $B_{max}$  value) when compared to a native system.

By using Millipore's FlowCollect™ Chemokine Receptor Surface Expression Identification kit, the researcher has the ability to identify a native GPCR expressing cell for biological assay development; the researcher can also easily select clonal stable cell lines for these GPCRs; finally, the researcher can monitor the changes of these receptor expression levels during a disease state.

*For Research Use Only; Not for use in diagnostic procedures*

---

## **Kit Components**

1. 500X Mouse anti-human CCR7 Monoclonal Antibody; Clone ID 150503: (Part No. CS202137) One 20  $\mu$ L vial
2. 500X Secondary Antibody conjugated to R-Phycoerythrin: (Part No. CS202129) One 20  $\mu$ L vial
3. Antibody Diluent: (Part No. CS202130) One 1 mL vial
4. Fixation Buffer: (Part No. CS202122) One 13 mL bottle
5. 10X Wash Buffer: (Part No. CS202123) One 13 mL bottle
6. 5X Assay Buffer: (Part No. CS202124) One 55 mL bottle
7. Positive Control Cell Culture for CCR7 : (Part No. CS202387) One vial supplied with  $4 \times 10^6$  cells
8. Negative Control Cell Culture for CCR7 : (Part No. CS202121) One vial supplied with  $4 \times 10^6$  cells

---

## **Materials Not Supplied**

1. Test tubes for sample preparation and storage
2. Tissue culture reagents, i.e. HBSS, PBS, cell dislodging buffers, etc.
3. Pipettors with corresponding tips capable of accurately measuring 10 – 1000  $\mu$ L
4. Tabletop centrifuge capable of exceeding 1100 x g
5. Mechanical vortex
6. Flow Cytometry instrument capable of performing single cell analysis

## Precautions

- The instructions provided have been designed to optimize the kit's performance. Deviation from the kit's instructions may result in suboptimal performance and may produce inaccurate data.
- Some assay components included in the kit may be harmful. Kit contains a paraformaldehyde solution (fixation solution). Please refer to the MSDS sheet for specific information on hazardous materials.
- The R-Phycoerythrin conjugated Secondary antibody is light sensitive and must be stored in the dark.
- During storage and shipment, the product supplied in vials may condense within the vial. For maximum recovery of the product, centrifuge original vial prior to removing cap.
- Do not use reagents beyond the expiration date of the kit.

---

## Storage

This kit is shipped at -20°C. The anti-human CCR7 Monoclonal Antibody (Part # CS202137), Secondary Antibody conjugated to R-Phycoerythrin (Part # CS202129), 5X Assay Buffer (Part # CS202124), and Antibody Diluent (Part # CS202130) should be stored at 2 - 8°C immediately upon receipt. The 10X Wash Buffer (Part # CS202123) and Fixation Buffer (Part # CS202122) can be stored at either 2 - 8°C or at room temperature. Both positive and negative control frozen cell cultures must be stored at -80 °C immediately upon receipt.

All kit components are stable up to six (6) months if stored and handled correctly. **For the control cell cultures, please avoid repeated freeze/thaw cycles as this will affect the integrity of the product.**

**Discard any remaining reagents after the expiration date**

---

## Preparation of Reagents

### 1. Wash Buffer

Wash buffer is supplied at 10X concentration and should be diluted to 1X prior to use. Add 1 mL of the 10X wash buffer to an appropriate container, and adjust volume to 10 mL with deionized water. Mix thoroughly. Prepared 1X wash buffer is stable up to one year. Store at 2 - 8°C.

*Note: 10X Wash Buffer can be stored at RT to avoid any potential precipitate formation*

### 2. Fixation Buffer

For  $1 \times 10^6$  cells: Add 500  $\mu$ L of the Fixation Buffer to 500  $\mu$ L of 1X Wash Buffer to make a final volume of 1 mL. Stir to homogeneity. Prepared 1X Fixation Buffer is stable up to one month. Store at 2 - 8°C.

### 3. Assay Buffer

Add 50 mL of 5X Assay Buffer to an appropriate container, and adjust volume to 250 mL with deionized water. Stir to homogeneity. Prepared 1X Assay Buffer is stable up to one year. Store at 2 - 8°C.

#### 4. **Mouse anti-human CCR7 Monoclonal Antibody (Clone ID 150503)**

The primary antibody is provided at a 500X stock concentration. Prior to use, dilute stock antibody to 10X by adding 20  $\mu\text{L}$  of anti-human CCR7 monoclonal antibody to 980  $\mu\text{L}$  of antibody diluent. Mix thoroughly by gently pipetting up and down avoiding bubbles. Prepared 10X primary antibody is stable with no detectable loss of activity up to one year when stored at 2 - 8°C.

*Note: Depending on the needs of the end user (dependent on cell type) a broad or narrow range of antibody dilution may be preferred.*

#### 5. **Secondary Antibody conjugated to R-Phycoerythrin**

The secondary antibody is provided at a 500X stock concentration. Prior to use, dilute stock antibody to 10X by adding 20  $\mu\text{L}$  of secondary antibody to 980  $\mu\text{L}$  of deionized water. Mix thoroughly by gently pipetting up and down avoiding bubbles. Prepared 10X secondary antibody is stable with no detectable loss of activity up to one year when stored at 2 - 8°C.

*Note: Depending on the needs of the end user (dependent on cell type) a broad or narrow range of antibody dilution may be preferred.*

---

### **Preparation of Control Frozen Cell Cultures**

Two vials of frozen cell cultures are provided in each assay kit. One vial contains the recombinant CCR7 ChemiScreen™ GPCR cell line (Part No. CS202387) fixed and frozen at 4 million cells ( $4 \times 10^6$  cells) per vial, which will serve as a positive control. The second vial contains the Chem-1 ChemiScreen™ parental cell line (Part No. CS202121), fixed and frozen at 4 million cells ( $4 \times 10^6$  cells) per vial, which will serve as a negative control.

1. Remove frozen cell vials (positive and negative controls) from -80°C. Allow to thaw on ice.
2. Prepare 1X Wash Buffer (as indicated above) and chill on ice or by refrigeration.
3. Remove desired amount of cells and place in a centrifuge tube.
4. For every  $1 \times 10^6$  cells, add 5 mL of 1X Wash Buffer to cells and pipette up and down gently to ensure proper cell dispersion.
5. Place centrifuge tube(s) into a tabletop centrifuge and spin sample(s) down for 3 minutes at 1100 x g.
6. Remove sample(s) from centrifuge and discard supernatant, saving the pellet.
7. Repeat steps #4 - #6 twice more to remove any excess DMSO from cell suspension.
8. Save the cell pellet(s) in preparation for cellular staining and analysis.

## Preparation of Test Cell Samples

This kit is designed to evaluate CCR7 expression on any cell line chosen by the end user. Test samples can be evaluated using live cell analysis or by cell fixation. Below are the guidelines for preparing cells for fixation.

### a. For adherent cells:

1. Aspirate growth media from tissue culture flask and wash cell monolayer using PBS or HBSS to wash away any residual growth media.
2. Obtain cell culture by gentle harvesting using a mild enzyme such as trypsin or an EDTA-based cell dissociation buffer.
3. Gently tap the side of the flask to dislodge cell monolayer and add 1X Wash Buffer to collect the cells. Place cell suspension into a centrifuge collection tube. Using a hemacytometer, remove a small sample and count to determine cell numbers. Also note cell viability.
4. Place centrifuge tube into a tabletop centrifuge and spin down samples for 3 minutes at 1100 x g.
5. Aspirate supernatant and discard, saving only the cell pellet.
6. Gently resuspend the cell pellet by adding 1X Fixation Buffer at 1 mL per  $1 \times 10^6$  cells. Allow to incubate on ice for 20 minutes.
7. Place centrifuge tube into a tabletop centrifuge and spin down the sample for 3 minutes at 1100 x g.
8. Remove the sample from centrifuge and discard supernatant, saving the pellet.
9. For every  $1 \times 10^6$  cells, add 5 mL of 1X Wash Buffer to cells and pipette up and down gently to ensure proper cell dispersion.
10. Repeat steps #7 - #9 twice more to remove any excess fixation buffer from cell suspension.
11. Save the cell pellet in preparation for cellular staining and analysis.

### b. For suspension cells:

1. Obtain cell culture by gently pipetting cell suspension up and down to ensure complete homogeneity.
2. Remove a small sample from the tissue culture flask, and using a hemacytometer count and determine cell numbers. Also note cell viability.
3. Repeat steps #4 - #11 as noted above (In the "For adherent cells" section)

---

## Assay Instructions

*Note: During all steps in the assay procedure, keep all reagents on ice. Test samples can be examined using live cell analysis or after cell fixation. After preparation of the cell cultures, follow the guidelines listed to ensure proper cell staining for optimal analysis.*

1. Make sure that all reagents have been prepared properly prior to use. Concentrated assay components must be diluted to a working 1X solution.
2. Obtain cell pellets: test sample, positive and negative controls as described above. Place on ice.

3. Prepare 1X Primary Antibody by adding 10  $\mu\text{L}$  of 10X antibody to 90  $\mu\text{L}$  of 1X Assay Buffer, for each sample of 250,000 cells. For example if running 3 tests, add 30  $\mu\text{L}$  of 10X primary antibody to 270  $\mu\text{L}$  Assay Buffer.
4. Add 100  $\mu\text{L}$  of 1X Mouse anti-human CCR7 Monoclonal Antibody to each sample pellet consisting of 250,000 cells. If testing larger samples, add the appropriate amount of antibody to adjust for the increase of cell numbers. For example, if testing a sample of 2 million cells, add 800  $\mu\text{L}$  of 1X Mouse anti-human CCR7 Monoclonal Antibody.
5. Allow primary antibody to incubate with the cell population for one hour on ice.  
*(\*\*Caution: Avoid long term cell incubations with the primary antibody. Incubations lasting longer than 90 minutes can result in non-specific staining of the wild type control cells.)*
6. After one hour incubation with the primary antibody, add 5 mL of 1X Assay Buffer and place test tube containing cell culture into a tabletop centrifuge and spin sample for 3 minutes at 1100 x g.
7. Aspirate supernatant and discard, saving only the cell pellet.
8. Gently add 5 mL of 1X Assay Buffer to disrupt the cell pellet. Pipette sample up and down to ensure complete homogeneity.
9. Replace centrifuge tube back into tabletop centrifuge and spin sample for 3 minutes at 1100 x g.
10. Repeat washing steps #7 to #9 one more time to completely remove any residual primary antibody from the cell suspension.
11. After the third washing step, place the cell pellet(s) on ice and prepare the secondary (2<sup>o</sup>) antibody in the same manner as the primary antibody, adding 10  $\mu\text{L}$  of 10X Secondary Antibody to 90  $\mu\text{L}$  1X Assay Buffer for each 250,000 cell sample.
12. Allow secondary antibody to incubate with the cell population for 45 minutes to one hour on ice.
13. Repeat the washing steps as described in detail in steps #6 to #10.
14. At the completion of the final washing step, resuspend the cell pellet at  $0.5 \times 10^6$  cells per milliliter of 1X Assay Buffer.
15. Begin cellular analysis



## Calculation of Results

### Determining number of molecules per cell:

As described by Schertler *et al.* (1992), a rough guide for converting expression levels has been created for GPCRs relative to maximal number of binding sites ( $B_{max}$ ) determined by radioligand binding assay. For a given cell line, approximately  $10^6$  molecules per cell correspond to about 10 pmol/mg of membrane protein.

### Example Results:

1. Determined in a radioligand binding assay, ChemiScreen™ positive control cells yield a  $B_{max}$  value of 5 pmol/mg. This corresponds to approximately 500,000 receptors per cell.
2. In flow analysis using the Guava EasyCyte™ Plus, a Mean Fluorescent Intensity (MFI) of 588 is determined for the positive control cells with 98% of the cells positively identified.
3. A native cell line (unknown) produces a MFI of 273 when evaluated on the same system, with 96% of the cells positively identified.
4. By dividing the MFI value determined by the unknown against the MFI value determined for the positive control cells, the total number of receptors can be calculated for the unknown cell line.

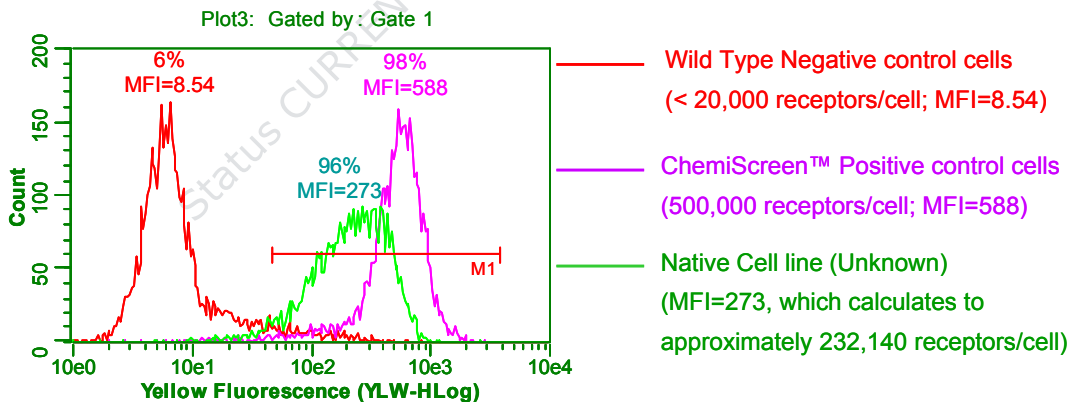
**Total # of cell surface receptors = Unknown cell line MFI / ChemiScreen™ “positive” Control Cells MFI**

### Calculation:

$273 / 588 = 0.464$  or 46.4% receptors relative to the positive control

Where 46.4% of 500,000 receptors per cell equal 232,000 receptors per cell (calculated for the unknown).

Values can be further extrapolated to 2.32 pmol/mg protein for the unknown cell line

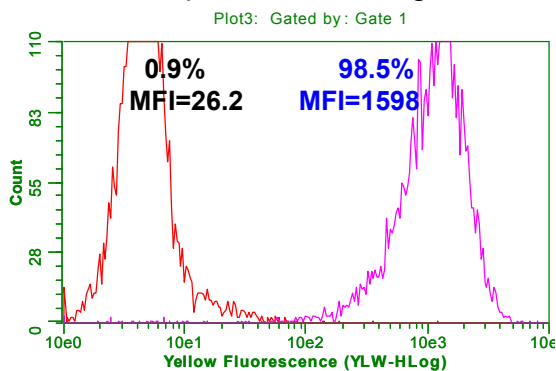


**Figure 1.** The histograms above illustrate how using Millipore’s FlowCelect™ GPCR Surface Identification Kit can be used to quantitatively measure cell surface expression for any given cell type. The histogram on the far right (pink) represents the positive control cells, the histogram in the middle (green) represents the unknown, and the histogram on the far left (red) is the negative control cells. Because Millipore’s ChemiScreen™ GPCR products have been fully characterized using Pharmacology techniques such as radioligand binding, now the researcher can use this information to calculate cell surface receptors based on a given  $B_{max}$  value and flow detected mean fluorescence intensity (MFI).



## Sample Results

Using Flow Cytometry as the method for detection, Millipore's GPCR Cell Surface Identification kit will assist the researcher identify their GPCR of interest on any cell type. Moreover, the researcher will also be able to quantitatively measure the cell surface expression of a given cell by using the frozen control cells provided, making this kit a suitable alternative to traditional radioligand binding assays.



- Recombinant CCR7 ChemiScreen™ GPCR cell line (Part No. CS202387) yields a  $B_{max}$  value = 3.3 pmol/mg protein,
- Chem-1 ChemiScreen™ host cell line (Part No. CS202121) yields a  $B_{max}$  value < 0.2 pmol/mg protein,
- Value conversion:
  - a) 330,000 CCR7 receptors per cell (positive control cells)
  - b) < 20,000 CCR7 receptors per cell (negative control cells)

**Figure 2.** The histogram on the left (red) represents the negative, null control cells and the histogram on the right (pink) represent the positive control cells. As seen above, the mouse anti-human CCR7 antibody is highly selective and ideal for detecting CCR7 expression on the cell surface.

---

## Technical Hints

- All kit buffers and antibodies should always remain at 2 - 8°C, both prior and during use.
- Frozen control cells should be properly stored at -20°C when not in use (cell cultures can also be stored at -80°C for long term storage).
- Mix samples thoroughly before use; avoid excessive bubbling.
- If minor precipitate is detected in the 10X Wash Buffer place the bottle in a warm water bath for 30 minutes, followed by mixing the contents on a mechanical vortex.
- For cellular staining and analysis to be most effective, make sure that test cells have good viability prior to use.
- For certain cell cultures cell pellets may become hazy or transparent following the fixation step, making it difficult to see. If sampling a small collection of cells for flow analysis, it is recommended to perform all steps in a smaller collection tube (e.g. centrifuge tube)
- Do not mix or interchange reagents from various kit lots.

## Troubleshooting

Assay Step	Potential Problem	Experimental Suggestions
Reagent Preparation	Precipitation found in 10X Wash buffer	<ul style="list-style-type: none"> <li>If storing at -20°C, precipitate can form in the 10X wash buffer. Prior to use, place bottle in a 37°C water bath, swirling the contents occasionally. If this does not remove the precipitate completely, allow 10X Wash Buffer to sit at room temperature overnight.</li> </ul>
Instrument Clogging	Acquisition rate decreases dramatically	<p>This usually indicates that the fluid pathway on the instrument may be blocked. This can be alleviated by the following:</p> <ul style="list-style-type: none"> <li>Decreasing number of cells for analysis. The Guava EasyCyte™ Plus has the capacity of analyzing a steady stream of 300 – 500 cells per microliter. Any cell densities in excess can essentially block the normal flow, causing disruption during the assay. Decrease the number of cells being analyzed by diluting the sample to approximately 0.5 million cells per milliliter.</li> <li>Adherent or sticky cells can result in cellular clumping. Use a more aggressive enzyme for dissociation such as trypsin during cell harvesting should help keep cells in single suspension. Alternatively, using a cell strainer can help disrupt cell clumping if needed (Cat#: SCNY00060; 60 µM)</li> <li>After many uses, it is possible that the fluid system on the Guava EasyCyte™ Plus requires cleaning. Run a Quick Clean procedure to clean the fluid system during or after an assay. This will prevent any material from forming within the glass capillary walls.</li> </ul>
Cellular Analysis	A loss or lack of signal	<ul style="list-style-type: none"> <li>Cell numbers may need to increase. Cell loss is common during washing steps in the assay procedure. A substantial decrease in cell numbers can lead to a loss of signal. Make sure that cell density remains at approximately 0.5 million cells per milliliter during analysis.</li> <li>Although the assay procedure has been optimized to function utilizing many different cell types, further antibody titrations may be necessary for some cell types to capture the ideal staining concentration. A lack of signal may indicate that excess antibody will need to be used during the staining procedure.</li> </ul>
Cellular Analysis	Background and/or non-specific staining of cells	<ul style="list-style-type: none"> <li>Although the assay procedure has been optimized to function utilizing many different cell types, further antibody titrations may be necessary for some cell types to capture the ideal staining concentration. Non-specific staining and background may indicate that less antibody will need to be used during the staining procedure.</li> </ul>
Cellular Analysis	Variability in day to day experiments	<ul style="list-style-type: none"> <li>Monitor experimental cell cultures to ensure that cell viability and cell numbers being analyzed are consistent. Any drop in cell numbers or viability can influence experimental results.</li> <li>When using the Guava EasyCyte™ Plus instrument for flow analysis, make sure that a quality check on the instrument (e.g. calibration) is performed on a daily basis prior to use. (<i>*See Analytical Sensitivity and Detection Limits Section for Guava Check standards</i>)</li> </ul>

*\*For further support, please contact Millipore's Technical services at +1(800) 437-7500*

## References

1. Förster, R, *et al.* (1999) CCR7 coordinates the primary immune response by establishing functional microenvironments in secondary lymphoid organs. *Cell* 99: 23-33.
2. Muller, A, *et al.* (2001) Involvement of chemokine receptors in breast cancer metastasis. *Nature* 410: 50-6.
3. Payne, AS and Cornelius LA (2002) The role of chemokines in melanoma tumor growth and metastasis. *J. Invest. Dermatol.* 118: 915-22.
4. Sasaki, M, *et al.* (2003) Antagonist of secondary lymphoid-tissue chemokine (CCR ligand 21) prevents the development of chronic graft-versus-host disease in mice. *J. Immunol.* 170: 588-96.
5. Yoshida, R, *et al.* (1997) Molecular cloning of a novel human CC chemokine EBI1-ligand chemokine that is a specific functional ligand for EBI1, CCR7. *J. Biol. Chem.* 272: 13803-9.
6. Schertler GFX (1992). Overproduction of membrane proteins. *Curr Opin Struct Biol.* 2: 534-544.

---

## Related Products

1. FlowCollect™ CCR1 Surface Expression Identification Kit (Catalog # : FCCR100410)
2. FlowCollect™ CCR2b Surface Expression Identification Kit (Catalog # : FCCR200411)
3. FlowCollect™ CCR3 Surface Expression Identification Kit (Catalog # : FCCR300412)
4. FlowCollect™ CCR4 Surface Expression Identification Kit (Catalog # : FCCR400413)
5. FlowCollect™ CCR6 Surface Expression Identification Kit (Catalog # : FCCR600414)
6. FlowCollect™ CXCR1 Surface Expression Identification Kit (Catalog # : FCXR100420)
7. FlowCollect™ CXCR2 Surface Expression Identification Kit (Catalog # : FCXR200421)
8. FlowCollect™ CXCR3 Surface Expression Identification Kit (Catalog # : FCXR300422)
9. FlowCollect™ CXCR4 Surface Expression Identification Kit (Catalog # : FCXR400423)
10. FlowCollect™ CXCR6 Surface Expression Identification Kit (Catalog # : FCXR600424)

---

## Warranty

**Millipore Corporation** (“Millipore”) warrants its products will meet their applicable published specifications when used in accordance with their applicable instructions for a period of one year from shipment of the products. **MILLIPORE MAKES NO OTHER WARRANTY, EXPRESSED OR IMPLIED. THERE IS NO WARRANTY OF MERCHANTABILITY OR FITNESS FOR A PARTICULAR PURPOSE.** The warranty provided herein and the data, specifications and descriptions of Millipore products appearing in Millipore’s published catalogues and product literature may not be altered except by express written agreement signed by an officer of Millipore. Representations, oral or written, which are inconsistent with this warranty or such publications are not authorized and if given, should not be relied upon.

In the event of a breach of the foregoing warranty, Millipore’s sole obligation shall be to repair or replace, at its option, the applicable product or part thereof, provided the customer notifies Millipore promptly of any such breach. If after exercising reasonable efforts, Millipore is unable to repair or replace the product or part, then Millipore shall refund to the Company all monies paid for such applicable Product. **MILLIPORE SHALL NOT BE LIABLE FOR CONSEQUENTIAL, INCIDENTAL, SPECIAL OR ANY OTHER DAMAGES RESULTING FROM ECONOMIC LOSS OR PROPERTY DAMAGE SUSTAINED BY ANY COMPANY CUSTOMER FROM THE USE OF ITS PRODUCTS.**

(c) 2008: Millipore Corporation. All rights reserved. No part of these works may be reproduced in any form without permission in writing

Status CURRENT Verify revision with DP

## Notes

Status CURRENT Verify revision with QDS or PO