

SHEEP ANTI-SUMO1 POLYCLONAL ANTIBODY

CATALOG NUMBER: AB9186

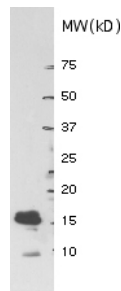
LOT NUMBER:

QUANTITY: 100 μ L

SPECIFICITY: Reacts with SUMO1. The antibody does not cross react with ubiquitin.

IMMUNOGEN: Synthetic peptide from human SUMO1.

APPLICATIONS: Western blot: 1:4,000-1:8,000



Western blot of SUMO-1 protein, probed with the AB9186 at 1:8,000 dilution. The protein sample was 1 μ L of E Coli cell lysate containing ~ 50 ng recombinant SUMO-1 protein (~ 17 kD).

Immunohistochemistry: 1:2,000-1:4,000
Optimal working dilutions must be determined by the end user.

SPECIES REACTIVITIES: Human and rat. Other species have not been tested.

FORMAT: Sheep serum.

PRESENTATION: Lyophilized. Reconstitute with 100 μ L of sterile distilled water.

STORAGE/HANDLING: Maintain lyophilized material at -20°C to -70°C for up to 12 months after date of receipt. After reconstitution maintain at -20°C to -70°C in undiluted for up to 6 months. Avoid repeated freeze/thaw cycles. Glycerol (ACS grade or better) can be added (1:1) for additional stability.

REFERENCES: Pountney, DL, et al., *Exp. Neurol.* (2003) **184**:436-446.
Li, Y, et al., *PNAS.USA* (2003) **100(1)**:259-264.
Lieberman, AP, et al., *Exp. Neurol.* (2004) **185**:204-207.



Important Note: *During shipment, small volumes of product will occasionally become entrapped in the seal of the product vial. For products with volumes of 200 μ L or less, we recommend gently tapping the vial on a hard surface or briefly centrifuging the vial in a tabletop centrifuge to dislodge any liquid in the container's cap.*

FOR RESEARCH USE ONLY; NOT FOR USE IN DIAGNOSTIC
PROCEDURES. NOT FOR HUMAN OR ANIMAL CONSUMPTION

Unless otherwise stated in our catalog or other company documentation accompanying the product(s), our products are intended for research use only and are not to be used for any other purpose, which includes but is not limited to, unauthorized commercial uses, in vitro diagnostic uses, ex vivo or in vivo therapeutic uses or any type of consumption or application to humans or animals.

©2002 - 2011: Millipore Corporation. All rights reserved. No part of these works may be reproduced in any form without permission in writing.