

# CpGenome™ Direct Prep Bisulfite Modification Kit

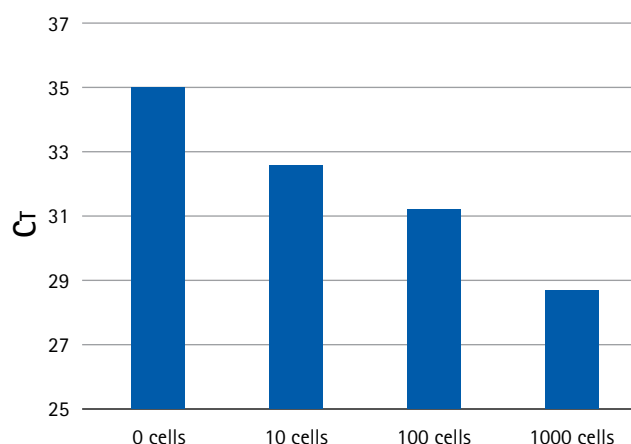
Bisulfite conversion directly from  
cultured cells, blood, fresh or fixed tissue

## More easily perform DNA methylation analysis

Unlike other bisulfite modification approaches that start with isolated genomic DNA, the CpGenome™ Direct Prep, and CpGenome™ Direct Prep-96 kits allow simple and efficient bisulfite conversion of DNA directly from your sample. Avoid the need to isolate genomic DNA and perform bisulfite modification of unmethylated cytosines starting with fresh or frozen tissues, cultured cells, whole blood, buffy coat, biopsies, or FFPE (formalin-fixed paraffin-embedded) samples.

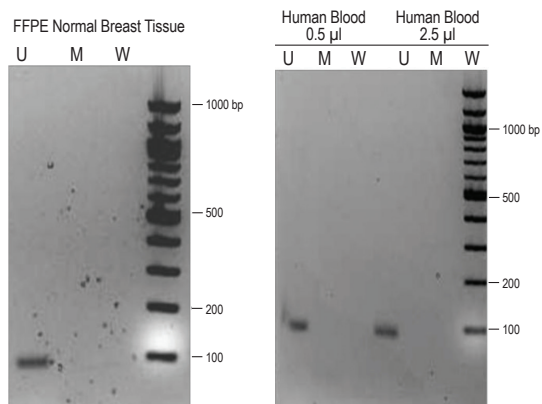
## Advantages

- Direct bisulfite conversion of cells, tissues, blood and FFPE samples
- Conversion efficiencies >99.5%
- Bisulfite conversion from as few as 10 cells or as low as 50 pg of input DNA
- Fast, simple, and streamlined protocol for one-step bisulfite conversion
- In-column desulfonation allows recovery of DNA without additional precipitation steps for more consistent results
- Suitable for downstream analysis by methylation-specific PCR, restriction digestion, sequencing, microarray hybridization, etc.



## Effective bisulfite conversion from as few as 10 cells

Following the CpGenome™ Direct Prep protocol, 0, 10, 100 and 1000 HeLa cells were bisulfite-converted followed by real-time quantitative PCR detection with a CpG WIZ® BRCA1 U primer.



## Direct bisulfite conversion of FFPE samples (left) and blood samples (right).

A normal human FFPE sample and human blood samples were directly treated with proteinase K and bisulfite-converted as described in the CpGenome™ Direct Prep protocol. After conversion, the CpG WIZ® BRCA1 Amplification Kit was used to amplify converted DNA using methylation-specific PCR. Amplified products were analyzed on a 2% agarose gel.

U: CpG WIZ® Unmethylated Primer

M: CpG WIZ® Methylated Primer

W: CpG WIZ® Wild Type Primer

## Ordering Information

Product	Description	Catalogue No.
CpGenome™ Direct Prep (50 reactions)	Sufficient reagents for 50 bisulfite modification reactions. Kit includes, all required extraction and conversion reagents and buffers, plus, desalting columns, and collection tubes	17-10451
CpGenome™ Direct Prep (200 reactions)	Sufficient reagents for 200 bisulfite modification reactions. Kit includes, all required extraction and conversion reagents and buffers, plus, desalting columns, and collection tubes	17-10452
CpGenome™ Direct Prep-96 (192 reactions)	Sufficient reagents for 192 bisulfite modification reactions using 96-deep well plates. Kit includes, all required extraction and conversion reagents, and buffers, plus, 96-well plates, desalting plates, and 96-well collection plates.	17-10454

## Related Products

Product	Description	Catalogue No.
CpGenome™ Universal Methylated DNA	10 µg methylated human genomic DNA	S7821
CpGenome™ Universal Unmethylated DNA	10 µg unmethylated human genomic DNA	S7822
CpGenome™ Universal Methylated Mouse DNA Standard Set	5 µg each of matched methylated/ unmethylated mouse genomic DNA	S8000
CpGenome™ Human Methylated & Non-Methylated DNA Standard Set	Two vials 5 µg each. Human unmethylated DNA from DNMT1/ DNMT3b knockout cells. Human methylated DNA from genomic DNA, enzymatically methylated by <i>M. SssI</i> /methyltransferase.	S8001
CpGenome™ 5-mC & 5-hmC Human DNA Standards	5 µg each of human genomic DNA [Human brain DNA (high 5-hmC and human spleen DNA (low 5-hmC)] from the same individual containing physiological levels of 5-mC and 5-hmC quantified by LC/MS analysis.	S8003
CpGenome™ 5-mC & 5-hmC Mouse DNA Standards	Four samples of mouse genomic DNA from four different organs (brain, kidney, liver, thymus) containing physiological levels of 5-mC and 5-hmC, quantified by LC/MS analysis.	S8004

Discover additional products for Chromatin, DNA methylation and RNA analysis at [www.emdmillipore.com/epigenetics](http://www.emdmillipore.com/epigenetics)

## To Place an Order or Receive Technical Assistance

In the U.S. and Canada,  
call toll-free **1-800-645-5476**

For other countries across Europe and the world,  
please visit: [www.millipore.com/offices](http://www.millipore.com/offices)

For Technical Service, please visit:  
[www.millipore.com/techservice](http://www.millipore.com/techservice)



[www.emdmillipore.com/offices](http://www.emdmillipore.com/offices)