



3050 Spruce Street  
Saint Louis, Missouri 63103 USA  
Telephone 800-325-5832 • (314) 771-5765  
Fax (314) 286-7828  
email: techserv@sial.com  
sigma-aldrich.com

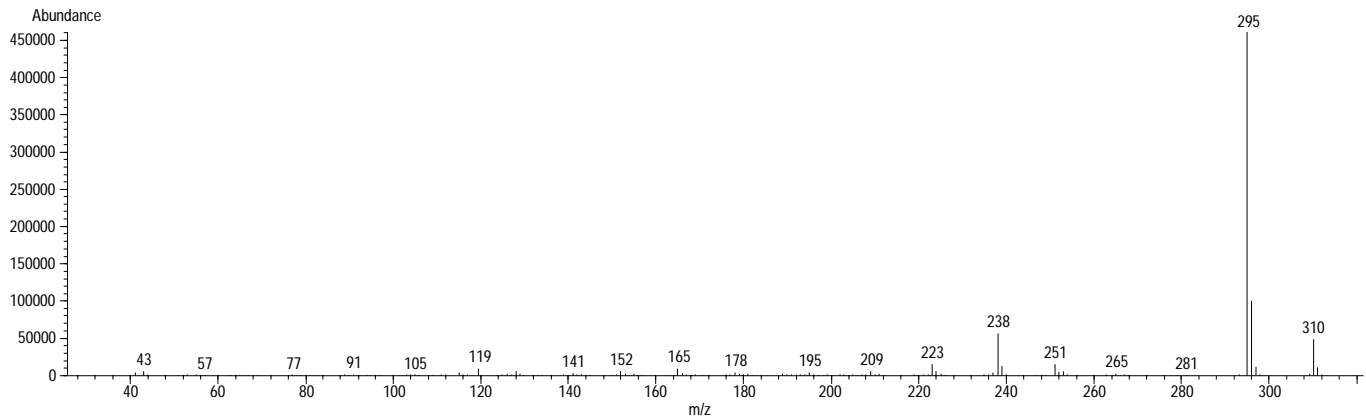
## Product Information

### CANNABINOL

Methanol Solution

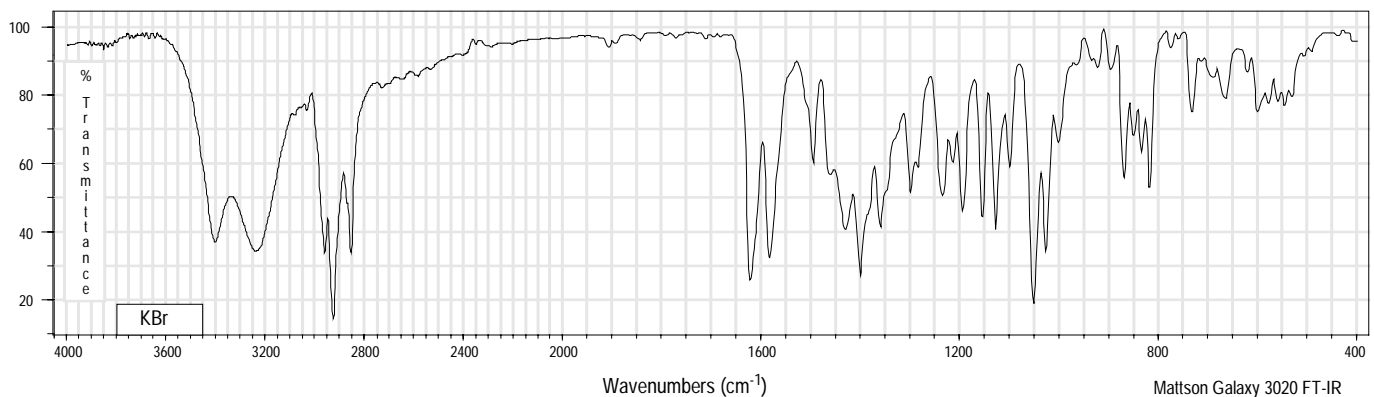
<b>Product Number</b>	C 6520	<b>Synonyms</b>	6,6,9-Trimethyl-3-pentyl-6H-dibenzo[b,d]pyran-1-ol; CBN
<b>Lot Number</b>	52K8801	<b>Stability</b>	If stored at 2-8°C in an air tight container, protected from light, decomposition of the product is less than 1% in 48 months. After opening, concentration may change due to loss of solvent.
<b>CAS Number</b>	[521-35-7]	<b>Expiration Date</b>	January 2007
<b>Concentration</b>	1.00 mg Cannabinol/mL GC grade methanol (Conc. verified by UV)	<b>Storage</b>	2-8°C; After opening, transfer contents to small vial provided for your convenience.
<b>Molecular Formula</b>	$C_{21}H_{26}O_2$		
<b>Molecular Weight</b>	310.4		
<b>DEA Class</b>	Exempt preparation of Class I		

70 eV Electron Ionization Mass Spectrum



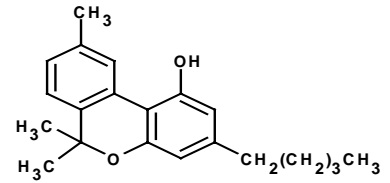
Hewlett-Packard 5890 Series II Gas Chromatograph  
Hewlett-Packard 5971 Mass Selective Detector  
Hewlett-Packard G1034C MS ChemStation (HP-DOS series)

### FT-IR



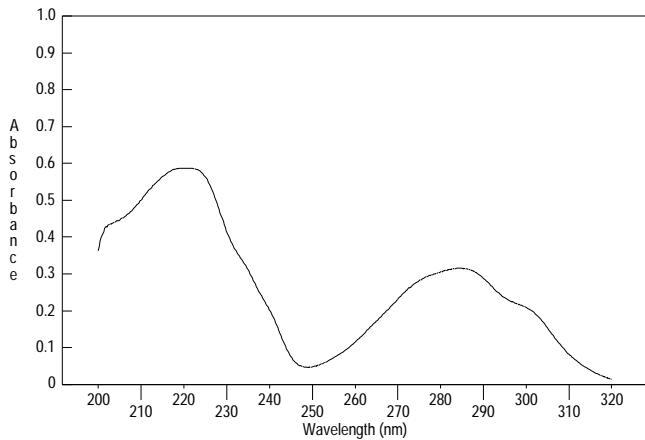
# CANNABINOL

Methanol Solution  
Product Number C 6520  
Lot Number 52K8801



## Ultraviolet Spectrum

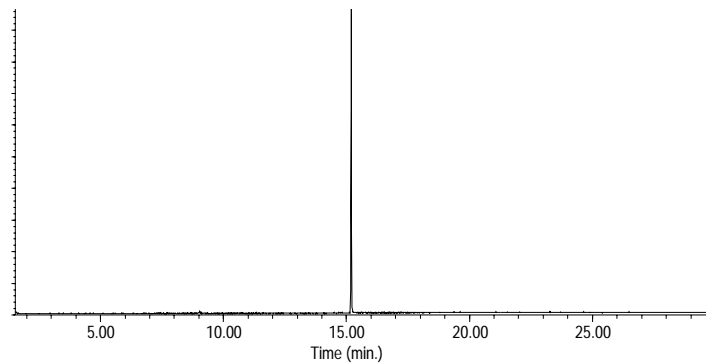
**Peak** 284.2 nm  
**Absorbance** 0.316  
**Solvent** Methanol  
**Dilution** 1 : 199 (v/v)



Bio-Tek Uvikon XL

## Capillary Gas Chromatography

**Column** Supelco SPB-1 (Cat. No. 2-4162)  
**I.D.** 0.20 mm **Length** 15 m **Film Thickness** 0.20  $\mu$ m  
**Oven Temperature** 50°C (2 min.), then 15°/min. to 300°C, hold 11 min.  
**Injector Temperature** 250°C, Split  
**Detector** Hewlett-Packard 5971  
Mass Selective Detector (70 eV, 40-500 m/z)



Hewlett-Packard 5890

C 6520/52K8801/05/22/02

This product is not for *in vitro* diagnostic procedures. For R&D use only. Not for drug, household or other uses.

Sigma brand products are sold through Sigma-Aldrich, Inc.

Sigma-Aldrich, Inc. warrants that its products conform to the information contained in this and other Sigma-Aldrich publications.

Purchaser must determine the suitability of the product(s) for their particular use. Additional terms and conditions may apply.

Please see reverse side of the invoice or packing slip.