



3050 Spruce Street
Saint Louis, Missouri 63103 USA
Telephone 800-325-5832 • (314) 771-5765
Fax (314) 286-7828
email: techserv@sia.com
sigma-aldrich.com

Product Information

D-AMPHETAMINE SULFATE

Methanol Solution

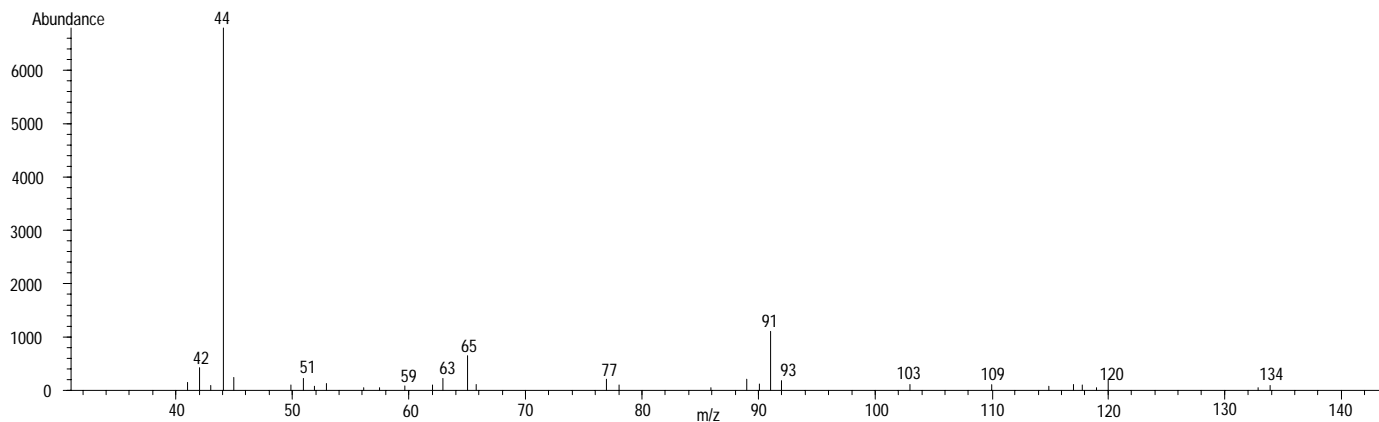
Product Number **A 3278**

TECHNICAL BULLETIN

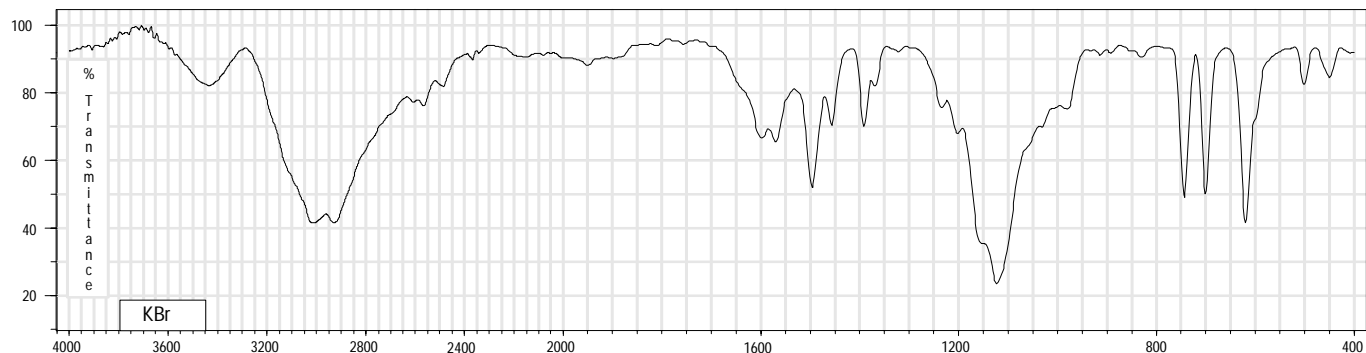
Lot Number 73K8807
CAS Number [51-63-8]
Concentration 1.33 mg D-Amphetamine Sulfate
(equivalent to 1.00 mg free
base)/mL GC grade methanol
(conc. verified by UV)
Molecular Formula $C_{18}H_{26}N_2 \cdot H_2SO_4$
Molecular Weight 368.5
DEA Class Exempt preparation of Class II
Storage 2-8 °C; After opening, transfer
contents to small vial provided for
your convenience.

Synonyms (+)- α -Methylbenzeneethaneamine
sulfate; d- α -Methylphenethylamine
sulfate; 1-Phenyl-2-aminopropane
sulfate; Phenaminum;
Dextroamphetamine Sulfate
Stability If stored at 2-8 °C in an air tight
container, protected from light,
decomposition of the product is less
than 1% in 48 months. After opening,
concentration may change due to loss of
solvent.
Expiration Date May 2007

70 eV Electron Ionization Mass Spectrumm



FT-IR

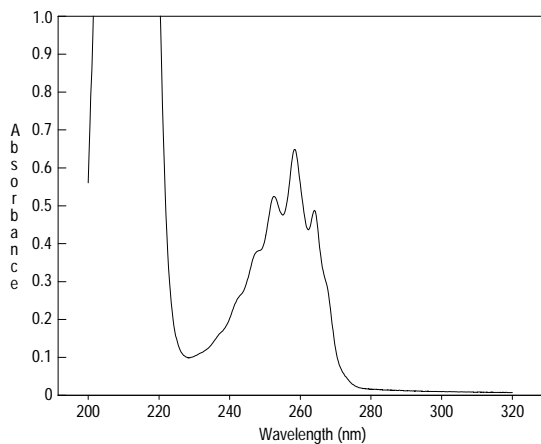


Ultraviolet Spectrum

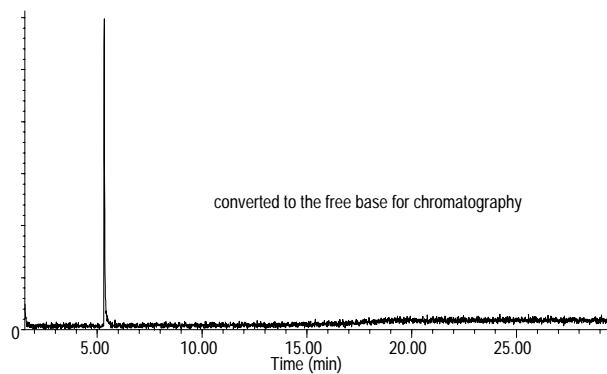
Peak 258.5 nm
Absorbance 0.631
Solvent Methanol
Dilution 1 : 1 (v/v)

Capillary Gas Chromatography

Column Supelco SPB-1 (Cat. No. 2-4162)
I.D. 0.20 mm **Length** 15 mm **Film Thickness** 0.20 μm
Oven Temperature 50°C (2 min.), then 15 °/min. to 300 °C, hold 11 min.
Injector Temperature 250 °C, Split
Detector Hewlett-Packard 5971
Mass Selective Detector (70 eV, 40-500 m/z)



Bio-Tek Uvikon XL



Hewlett-Packard 5890

Hewlett-Packard 5890 Series II Gas Chromatograph
Hewlett-Packard 5971 Mass Selective Detector
Hewlett-Packard G1034C MS ChemStation (HP-DOS series)

Sigma brand products are sold through Sigma-Aldrich, Inc.

Sigma-Aldrich, Inc. warrants that its products conform to the information contained in this and other Sigma-Aldrich publications. Purchaser must determine the suitability of the product(s) for their particular use. Additional terms and conditions may apply. Please see reverse side of the invoice or packing slip.