

O9-1 Mouse Cranial Neural Crest Cell Line

Cell Line

Cat. # SCC049

FOR RESEARCH USE ONLY
NOT FOR USE IN DIAGNOSTIC PROCEDURES
NOT FOR HUMAN OR ANIMAL CONSUMPTION
THIS PRODUCT CONTAINS GENETICALLY MODIFIED ORGANISMS.

Pack size: $\geq 1 \times 10^6$ cells/vial

Store in Liquid Nitrogen



Certificate of Analysis

page 1 of 4

Background

Cranial neural crest cells give rise to ectomesenchymal derivatives such as cranial bones, cartilage, smooth muscle, dentin, as well as melanocytes, corneal endothelial cells, and neurons and glial cells of the peripheral nervous system. Previous studies have suggested that although multipotent stem-like cells may exist during the course of cranial neural crest development, they are transient, undergoing lineage restriction early in embryonic development.

Whole-genome expression profiling of O9-1 cells revealed that this line stably expresses stem cell markers (CD44, Sca-1, and Bmi1) and neural crest markers (AP-2a, Twist1, Sox9, Myc, Ets1, Dlx1, Dlx2, Crabbp1, EphA2, and Itgb1). O9-1 cells are capable of contributing to cranial mesenchymal (osteoblast and smooth muscle) neural crest fates when injected into E13.5 mouse cranial tissue explants and chicken embryos. These results suggest that O9-1 cells represent multipotent mesenchymal cranial neural crest cells. The O9-1 cell line should serve as a useful tool for investigating the molecular properties of differentiating cranial neural crest cells. The O9-1 cell line can be propagated and passaged for at least 10 passages, and can differentiate into osteoblasts, chondrocytes, smooth muscle cells, and glial cells (Ishii, 2012).

Source

Derived from mass cultures of Wnt1-Cre; R26R-GFP reporter-expressing cranial neuronal crest cells from E8.5 mouse embryos.

Quality Control Testing

- Each vial contains $\geq 1 \times 10^6$ viable cells at passage 20 -22.
- Cells tested negative for infectious disease by a murine PCR panel (Mouse Essential CLEAR Panel by Charles River Animal Diagnostic Services).
- Cells tested negative for mycoplasma contamination.

Storage and Handling

O9-1 cells should be stored in liquid nitrogen. The cells can be passage for at least 10 passages without significantly affecting the cell marker expression and functionality.

References

1. Ishii, M., *et al.* (2012) A stable cranial neural crest cell line from mouse. *Stem Cells Dev.* 21(17): 3069-3080.
2. Sun, J., *et al.* (2013) Foxc1 controls the growth of the murine frontal bone rudiment by direct regulation of a Bmp response threshold of Msx2. *Development* 140(5): 1034-1044.

Materials Required But Not Supplied

1. Complete ES Cell Medium with 15% FBS and LIF (Cat. No. ES-101-B)
2. Recombinant Human bFGF (Cat. No. GF003)
3. Matrigel™ Membrane Matrix (Fisher Cat. No. CB-40234)
4. Accumax™ Solution (Cat. No. SCR006)
5. Trypsin-EDTA (Cat. No. SM-2003-C)
6. Dulbecco's Phosphate-Buffered Saline, 1X ES Cell Qualified (Cat. No. BSS-1005-B)
7. Tissue culture-ware and supplies
8. Cell counter / hemocytometer
9. Microscope

SPECIES LEGEND: H Human Ca Canine M Mouse R Rat Rb Rabbit B Bovine P Porcine WR Most Common Vertebrates

Please visit www.millipore.com for additional product information and references.

Submit your published journal article, and earn credit toward future purchases. Visit www.millipore.com/publicationrewards to learn more!

Protocols

A. O9-1 Cell Medium Preparation

Supplement medium with 15% FBS, mLIF (Millipore Cat. No. ES-101-B), and 25 ng/mL FGF-2 (Millipore Cat. No. GF003). Only FGF-2 is needed if using Complete ES Cell Medium (Cat. No. ES-101-B). Sterile filter with 0.22 µm filter.

B. ECM Coating of Flasks

1. Thaw Matrigel™ (Fisher Cat. No. CB-40234) on ice at 4°C. Do not thaw Matrigel™ at room temperature as this will lead to unwanted gelling.
2. Dilute Matrigel™ 1:50 in chilled 1X PBS (Cat. No. BSS-1005-B) and maintain on ice.
3. Coat flasks with 1:50 diluted Matrigel™ solution. Use 5-10 mL for each T75 flask and 15-25 mL for each T225 flask. Leave at room temperature for 1 hour before use.

Note: Flasks may be coated 5-6 days in advance and stored at 2-8°C.

4. Aspirate the coating solution just before plating the cells.

C. Thawing of Cells

1. **Do not thaw the cells until the recommended medium is on hand.** Cells are thawed in O9-1 Cell Medium (Section A above).
2. Remove the vial of O9-1 mouse cranial neural crest cells from liquid nitrogen and incubate in a 37°C water bath. Closely monitor until the cells are completely thawed. Maximum cell viability is dependent on the rapid and complete thawing of frozen cells.

IMPORTANT: Do not vortex the cells.

3. As soon as the cells are completely thawed, disinfect the outside of the vial with 70% ethanol. Proceed immediately to the next step.
4. In a laminar flow hood, use a 1 or 2 mL pipette to transfer the cells to a sterile 15 mL conical tube. Be careful not to introduce any bubbles during the transfer process.
5. Using a 10 mL pipette, slowly add dropwise 9 mL of O9-1 Cell Medium (Section A above), pre-warmed to 37°C, to the 15 mL conical tube.

IMPORTANT: Do not add the entire volume of media at once to the cells. This may result in decreased cell viability due to osmotic shock.

6. Gently mix the cell suspension by slowly pipetting up and down twice. Be careful not to introduce any bubbles.

IMPORTANT: Do not vortex the cells.

7. Centrifuge the tube at 300 x g for 2-3 minutes to pellet the cells.
8. Decant as much of the supernatant as possible. Steps 5-8 are necessary to remove residual cryopreservative (DMSO).
9. Resuspend the cells in a total volume of 10 – 12 mL O9-1 Cell Medium (Section A above), pre-warmed to 37°C.
10. Plate the cell mixture onto a precoated T75 tissue culture flask (Section B above).
11. Maintain the cells at 37°C in a 5% CO₂ humidified incubator.
12. The next day, replace the medium with fresh O9-1 Cell Medium (pre-warmed to 37°C). Replace with fresh medium every two to three days thereafter.
13. When the cells are approximately 80% confluent (3-4 days after plating cells), they can be dissociated with Accumax™ solution (Millipore Cat. No. SCR006) or trypsin-EDTA (Millipore Cat. No. SM-2003-C) and passaged further or frozen for later use.

D. Subculturing of Cells

1. Carefully remove the medium from the T75 tissue culture flask containing the confluent layer of O9-1 mouse cranial neural crest cells.
2. Apply 3-5 mL of Accumax™ or trypsin-EDTA solution and incubate in a 37°C incubator for 3-5 minutes.
3. Inspect the plate and ensure the complete detachment of cells by gently tapping the side of the plate with the palm of your hand.
4. Add 8 mL of O9-1 Cell Medium (pre-warmed to 37°C) to the plate.
5. Gently rotate the plate to mix the cell suspension. Transfer the dissociated cells to a 15 mL conical tube.
6. Centrifuge the tube at 300 x g for 3-5 minutes to pellet the cells.
7. Discard the supernatant.
8. Apply 2 mL of O9-1 Cell Medium (pre-warmed to 37°C) to the conical tube and resuspend the cells thoroughly.

IMPORTANT: Do not vortex the cells.

9. Count the number of cells using a hemocytometer.
10. Plate the cells to the desired density (typical split ratio is 1:3 to 1:6).

E. Cryopreservation of Cells

O9-1 mouse cranial neural crest cells can be frozen in O9-1 Cell Medium (Section A above) with 10% DMSO using a Nalgene slow freeze Mr. Frosty container.

■ antibodies ■ Multiplex products ■ biotools ■ cell culture ■ enzymes ■ kits ■ proteins/peptides ■ siRNA/cDNA products

Please visit www.millipore.com for additional product information, test data and references

EMD Millipore Corporation, 28820 Single Oak Drive, Temecula, CA 92590, USA 1-800-437-7500

Technical Support: T: 1-800-MILLIPORE (1-800-645-5476) • F: 1-800-437-7502

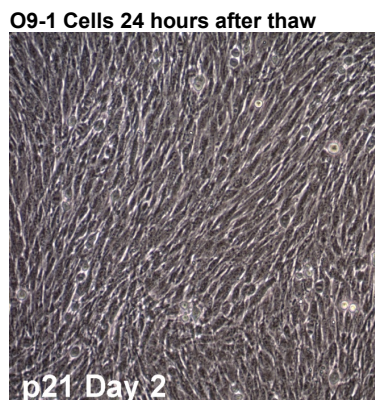
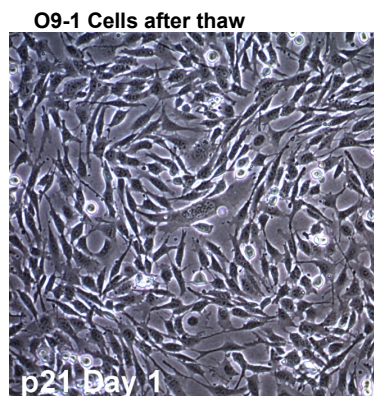
FOR RESEARCH USE ONLY. Not for use in diagnostic procedures. Not for human or animal consumption. Purchase of this Product does not include any right to resell or transfer, either as a stand-alone product or as a component of another product. Any use of this Product for purposes other than research is strictly prohibited.

Millipore®, the M mark, Upstate®, Chemicon®, Linco® and all other trademarks, unless specifically identified above in the text as belonging to a third party, are owned by Merck KGaA, Darmstadt. Copyright ©2008-2020 Merck KGaA, Darmstadt. All rights reserved.

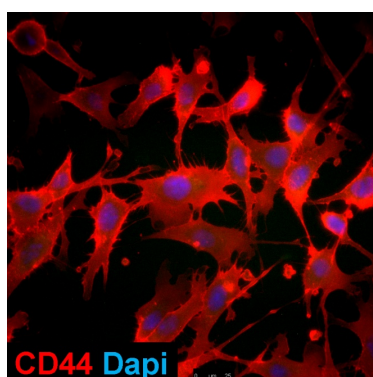


We Buy 100% Certified Renewable Energy

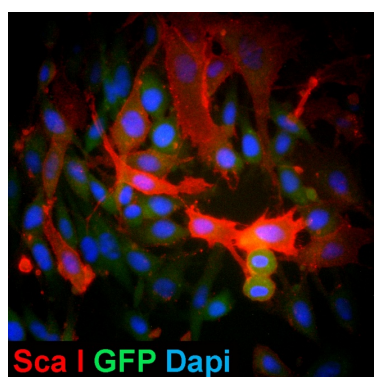
Representative Lot Data



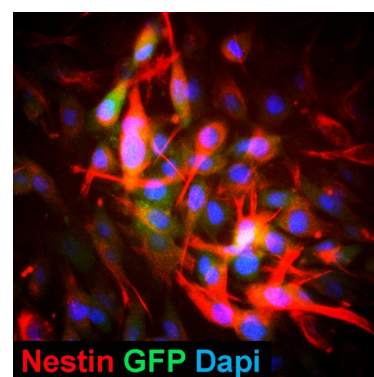
O9-1 cells express stem cell markers



O9-1 Cells stained with anti-CD44 (MABT78, 1:200)

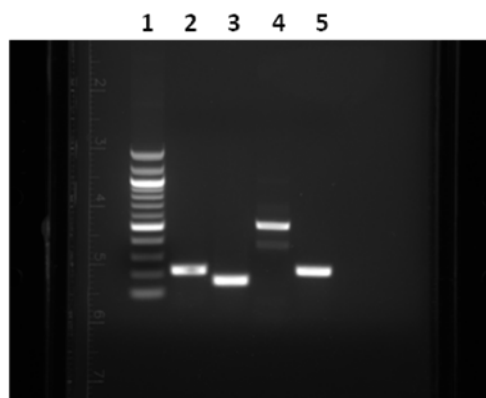
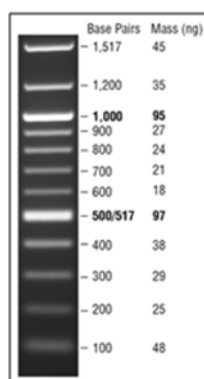


O9-1 Cells stained with anti-Sca-1 (MABD26, 5ug/mL)



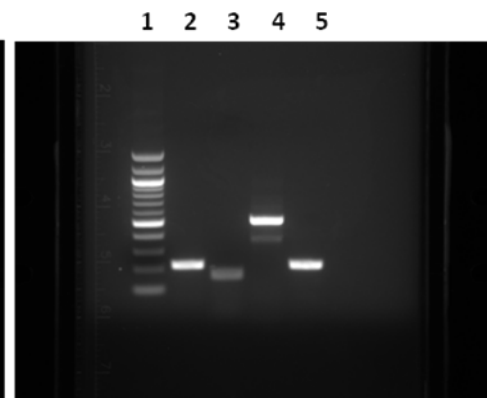
O9-1 Cells stained with anti-Nestin (MAB353, 5ug/mL)

O9-1 cells express neural crest markers



O9-1 Cells; Passage 31

- 1 100 bp DNA Ladder (NEB, QuickLoad)
- 2 P31, Twist1, 37 cycles @62°C - 225 bp
- 3 P31, Snail1, 37 cycles @56°C - 167 bp
- 4 P31, AP-2α, 37 cycles @62°C - 518 bp
- 5 P31, β-Actin, 30 cycles @56°C - 222 bp



O9-1 Cells; Passage 21

- 1 100 bp DNA Ladder (NEB, QuickLoad)
- 2 P21, Twist1, 37 cycles @62°C - 225 bp
- 3 P21, Snail1, 30 cycles @56°C - 167 bp
- 4 P21, AP-2α, 37 cycles @62°C - 518 bp
- 5 P21, β-Actin, 30 cycles @56°C - 222 bp

antibodies Multiplex products biotools cell culture enzymes kits proteins/peptides siRNA/cDNA products

Please visit www.millipore.com for additional product information, test data and references

EMD Millipore Corporation, 28820 Single Oak Drive, Temecula, CA 92590, USA 1-800-437-7500

Technical Support: T: 1-800-MILLIPORE (1-800-645-5476) • F: 1-800-437-7502

FOR RESEARCH USE ONLY. Not for use in diagnostic procedures. Not for human or animal consumption. Purchase of this Product does not include any right to resell or transfer, either as a stand-alone product or as a component of another product. Any use of this Product for purposes other than research is strictly prohibited.

Millipore®, the M mark, Upstate®, Chemicon®, Linco® and all other trademarks, unless specifically identified above in the text as belonging to a third party, are owned by Merck KGaA, Darmstadt. Copyright ©2008-2020 Merck KGaA, Darmstadt. All rights reserved.



We Buy 100% Certified Renewable Energy

ACADEMIC USE AGREEMENT
(subject to local law)

THIS PRODUCT MAY ONLY BE USED BY INDIVIDUALS EMPLOYED BY AN ACADEMIC INSTITUTION AND IS INTENDED SOLELY TO BE USED FOR ACADEMIC RESEARCH, WHICH IS FURTHER DEFINED BELOW. BY OPENING THIS PRODUCT, YOU ("PURCHASER") HEREBY REPRESENT THAT YOU HAVE THE RIGHT AND AUTHORITY TO LEGALLY BIND YOURSELF AND/OR YOUR EMPLOYER INSTITUTION, AS APPLICABLE, AND CONSENT TO BE LEGALLY BOUND BY THE TERMS OF THIS ACADEMIC USE AGREEMENT. IF YOU DO NOT AGREE TO COMPLY WITH THESE TERMS, YOU MAY NOT OPEN OR USE THE PRODUCT AND YOU MUST CALL MILLIPORESIGMA ("SELLER") CUSTOMER SERVICE (1-800-645-5476) TO ARRANGE TO RETURN THE PRODUCT FOR A REFUND.

"Product" means O9-1 Mouse Cranial Neural Crest Cell Line (SCC049)

"Academic Research" means any internal *in vitro* research use by individuals employed by an academic institution. Academic Research specifically excludes the following uses of whatever kind or nature:

- Re-engineering or copying the Product
- Making derivatives, modifications, or functional equivalents of the Product
- Obtaining patents or other intellectual property rights claiming use of the Product
- Using the Product in the development, testing, or manufacture of a Commercial Product
- Using the Product as a component of a Commercial Product
- Reselling or licensing the Product
- Using the Product in clinical or therapeutic applications including producing materials for clinical trials
- Administering the Product to humans
- Using the Product in collaboration with a commercial or non-academic entity

"Commercial Product" means any product intended for: (i) current or future sale; (ii) use in a fee-for-service; or (iii) any diagnostic, clinical, or therapeutic use.

Access to the Product is limited solely to those officers, employees, and students of PURCHASER's academic institution who need access to the Product to perform Academic Research. PURCHASER shall comply with all applicable laws in its use and handling of the Product and shall keep it under reasonably safe and secure conditions to prevent unauthorized use or access.

These use restrictions will remain in effect for as long as PURCHASER possesses the Product.

COMMERCIAL OR NON-ACADEMIC ENTITIES INTERESTED IN PURCHASING OR USING THE PRODUCT MUST CONTACT licensing@emdmillipore.com AND AGREE TO SEPARATE TERMS OF USE PRIOR TO USE OR PURCHASE.

GMO

This product contains genetically modified organisms.
Este producto contiene organismos genéticamente modificados.
Questo prodotto contiene degli organismi geneticamente modificati.
Dieses Produkt enthält genetisch modifizierte Organismen.
Ce produit contient des organismes génétiquement modifiés.
Dit product bevat genetisch gewijzigde organismen.
Tämä tuote sisältää geneettisesti muutettuja organismeja.
Denna produkt innehåller genetiskt ändrade organismer.

■ antibodies ■ Multiplex products ■ biotools ■ cell culture ■ enzymes ■ kits ■ proteins/peptides ■ siRNA/cDNA products

Please visit www.millipore.com for additional product information, test data and references

EMD Millipore Corporation, 28820 Single Oak Drive, Temecula, CA 92590, USA 1-800-437-7500

Technical Support: T: 1-800-MILLIPORE (1-800-645-5476) • F: 1-800-437-7502

FOR RESEARCH USE ONLY. Not for use in diagnostic procedures. Not for human or animal consumption. Purchase of this Product does not include any right to resell or transfer, either as a stand-alone product or as a component of another product. Any use of this Product for purposes other than research is strictly prohibited.

Millipore®, the M mark, Upstate®, Chemicon®, Linco® and all other trademarks, unless specifically identified above in the text as belonging to a third party, are owned by Merck KGaA, Darmstadt. Copyright ©2008-2020 Merck KGaA, Darmstadt. All rights reserved.



We Buy 100% Certified
Renewable Energy