



CD34 (QBEnd/10), IHC-Paraffin Staining Report

Target Antigen:	CD34 (QBEnd/10) Prediluted Antibody.
Catalog or ID #:	IHC2009
Host and Isotype:	Mouse IgG1
Clone:	Clone: QBEnd/10
Purity and Method:	Protein-A affinity chromatography
Concentration and Quantity:	Prediluted
Storage Conditions:	2-4.0°C refrigerated
Species Reactivity:	Hemotopoietic Progenitor (Stem) Cell and Endothelial Cells of Vascular Tissue.
IHC-Paraffin Fixation Tested:	10% neutral Buffered Formalin
IHC-Paraffin Titer:	N/A
IHC-Paraffin Pretreatment(s):	Heat Induced Epitope Retrieval (HIER). Recommend Citrate Buffer pH 6.0 or EDTA Buffer pH 8.0. Also can work with TE pH 9.0 Buffer, staining is lighter with no HIER.
IHC-Paraffin Protocol:	IHC-Select, HRP-DAB (Brief Outline): Blocking Reagent for 5 min. Primary Antibody (or Negative Control Reagent) for 10 min. Biotinylated Secondary Antibody for 10 min. Streptavidin-HRP for 10 min. DAB for 10 min. Hematoxylin for 1 min.
Positive Tissue(s):	Any tissue with endothelial cells.
Subcellular Location(s):	Endothelial cell cytoplasm/ plasma membrane staining.
Negative Tissue(s):	Normal non-epithelial tissue.
Comments and References:	Staining is as expected since it is expressed in the cytoplasm and plasma membrane of vascular endothelium cells.

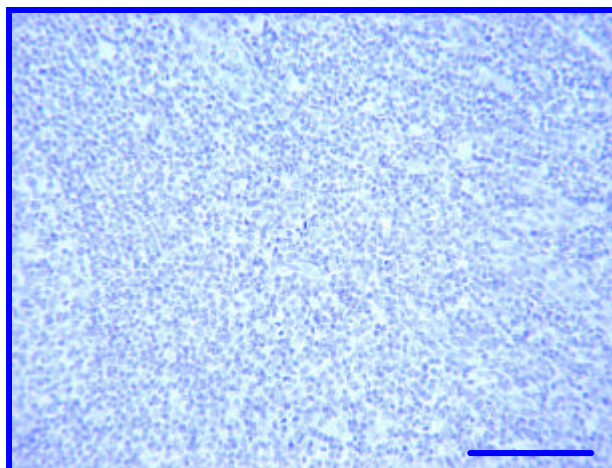
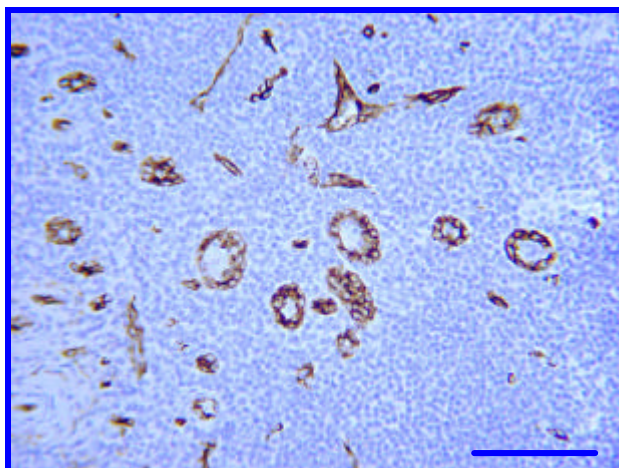


CHEMICON

INTERNATIONAL

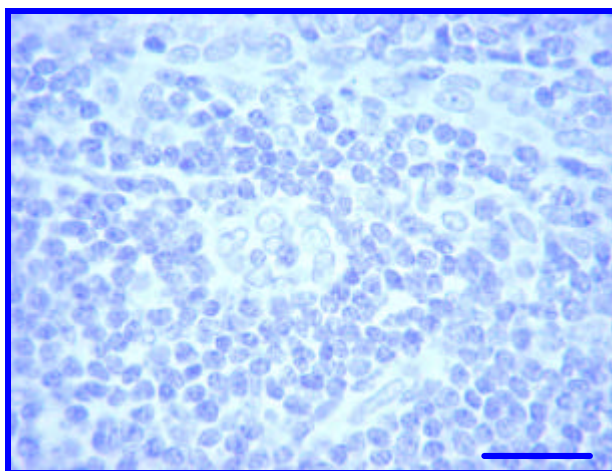
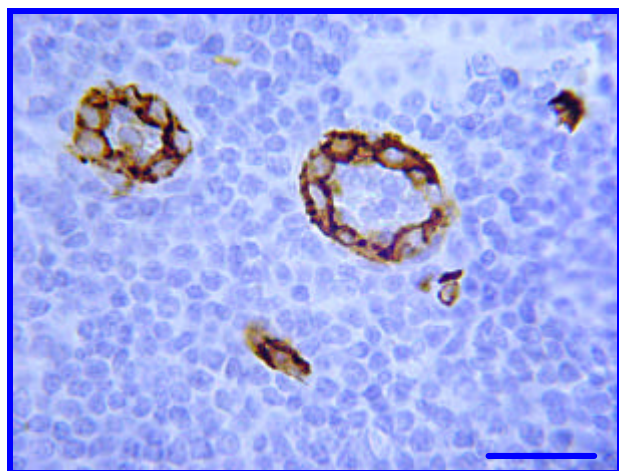
IHC – Paraffin Staining Examples:

Pictures of Optimal Staining With Citrate Buffer Epitope Retrieval: Human Tonsil



CD34 (IHC2009, Clone: QBEnd/10) staining of Human Tonsil. Tissue pretreated with Citrate Buffer, pH 6.0, Prediluted Antibody, IHC-Select Detection with HRP-DAB. Vascular endothelial cells stain strongly (brown). Bar = 100 μ m.

Negative control staining of Human Tonsil. Tissue pretreated with Citrate Buffer, pH 6.0, Prediluted Antibody, IHC-Select Detection with HRP-DAB. No background staining is detected. Bar = 100 μ m.



CD34 (IHC2009, Clone: QBEnd/10) staining of Human Tonsil. Tissue pretreated with Citrate Buffer, pH 6.0, Prediluted Antibody, IHC-Select Detection with HRP-DAB. Vascular endothelial cells stain strongly (brown). Bar = 100 μ m.

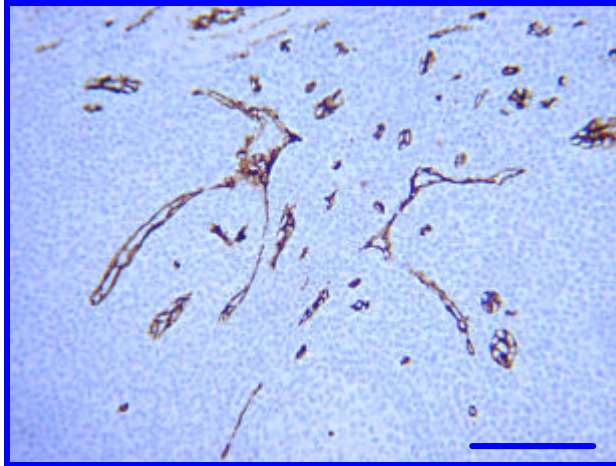
Negative control staining of Human Tonsil. Tissue pretreated with Citrate Buffer, pH 6.0, Prediluted Antibody, IHC-Select Detection with HRP-DAB. No background staining is detected. Bar = 100 μ m. Bar = 25 μ m.



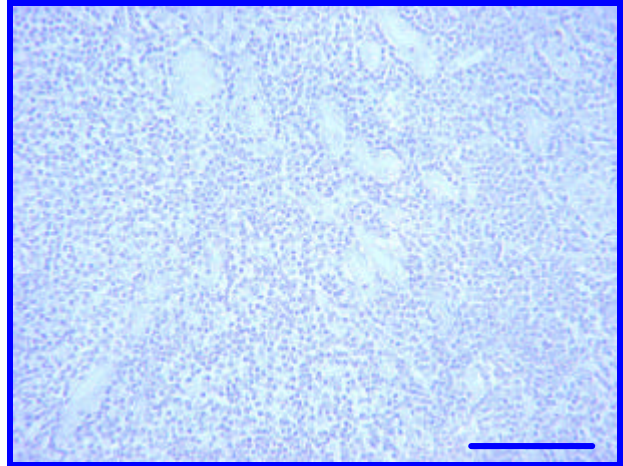
CHEMICON
INTERNATIONAL

IHC – Paraffin Staining Examples:

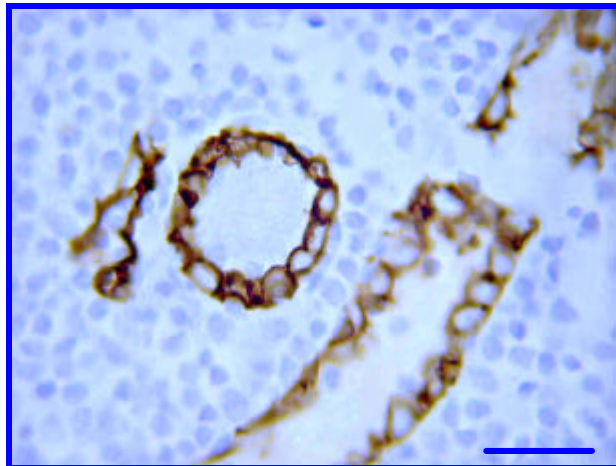
Pictures of Optimal Staining With EDTA Epitope Retrieval: Human Tonsil



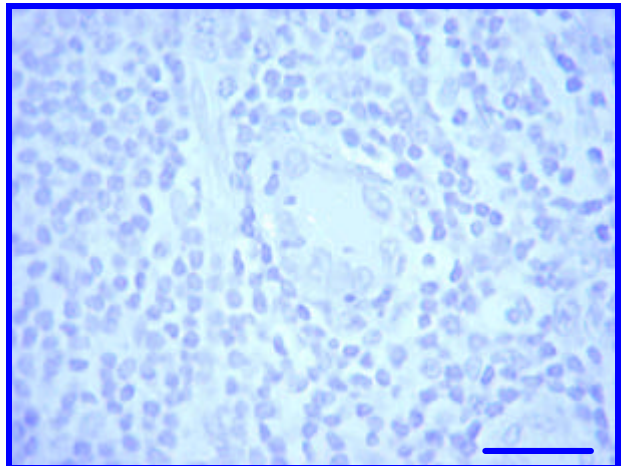
CD34 (IHC2009, Clone QBEnd/10) staining of Human Tonsil. Tissue pretreated with EDTA, pH 8.0, Prediluted Antibody, IHC-Select Detection with HRP-DAB. Vascular endothelial cells stain strongly (brown). Bar = 25 μ m.



Negative control staining of Human Tonsil. Tissue pretreated with EDTA, pH 8.0, Prediluted Antibody, IHC-Select Detection with HRP-DAB. No background staining is detected. Bar = 100 μ m. Bar = 100 μ m.



CD34 (IHC2009, Clone QBEnd/10) staining of Human Tonsil. Tissue pretreated with EDTA, pH 8.0, Prediluted Antibody, IHC-Select Detection with HRP-DAB. Vascular endothelial cells stain strongly (brown). Bar = 25 μ m.



Negative control staining of Human Tonsil. Tissue pretreated with EDTA, pH 8.0, Prediluted Antibody, IHC-Select Detection with HRP-DAB. No background staining is detected. Bar = 100 μ m. Bar = 100 μ m.

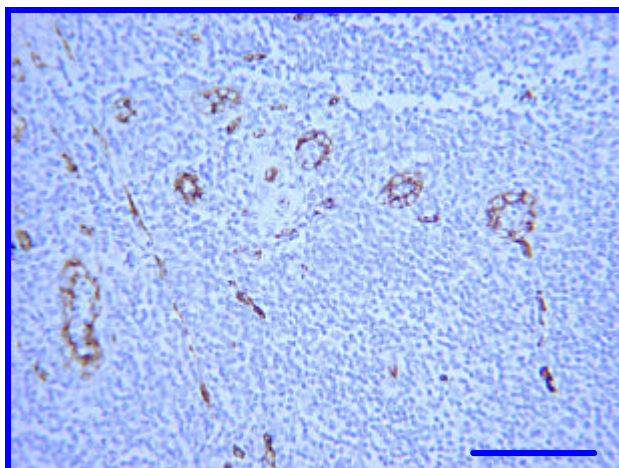


CHEMICON

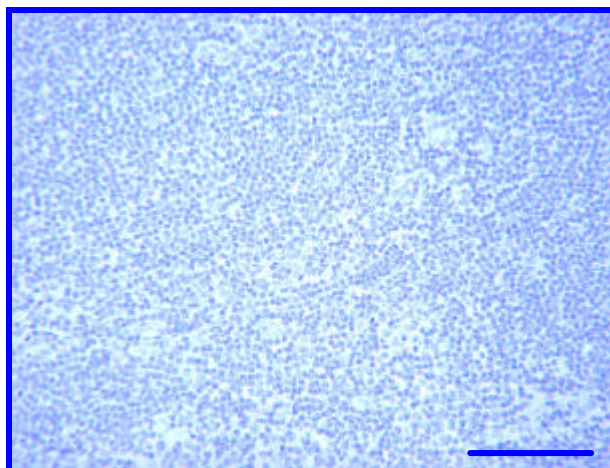
INTERNATIONAL

IHC – Paraffin Staining Examples:

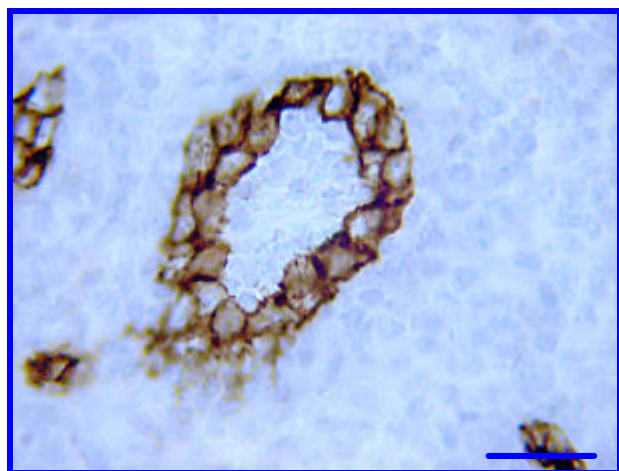
Pictures of Optimal Staining With TE Buffer Epitope Retrieval: Human Tonsil



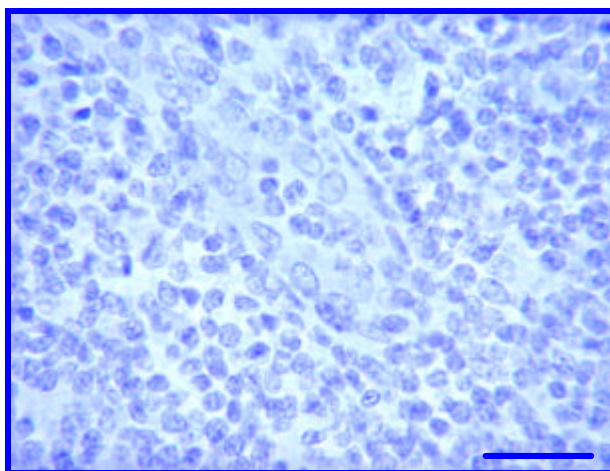
CD34 (IHC2009, Clone: QBEnd/10) staining of Human Tonsil. Tissue pretreated with TE Buffer, pH 9.0, Prediluted Antibody, IHC-Select Detection with HRP-DAB. Vascular endothelial cells stain strongly (brown). Bar = 100µm.



Negative control staining of Human Tonsil. Tissue pretreated with TE Buffer, pH 9.0, Prediluted Antibody, IHC-Select Detection with HRP-DAB. No background staining is detected. Bar = 100µm. Bar = 25µm.



CD34 (IHC2009, Clone: QBEnd/10) staining of Human Tonsil. Tissue pretreated with TE Buffer, pH 9.0, Prediluted Antibody, IHC-Select Detection with HRP-DAB. Vascular endothelial cells stain strongly (brown). Bar = 100µm.



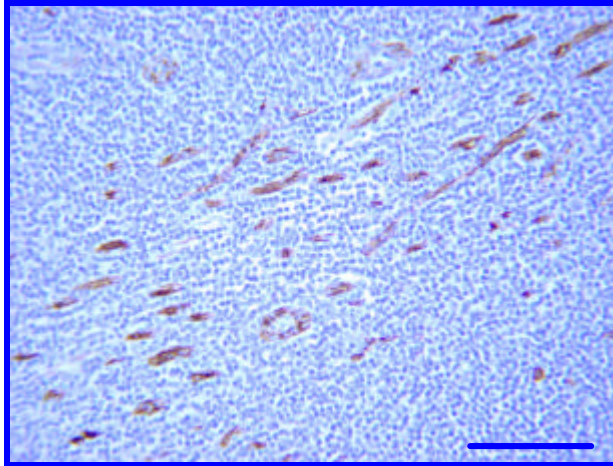
Negative control staining of Human Tonsil. Tissue pretreated with TE Buffer, pH 9.0, Prediluted Antibody, IHC-Select Detection with HRP-DAB. No background staining is detected. Bar = 25µm.



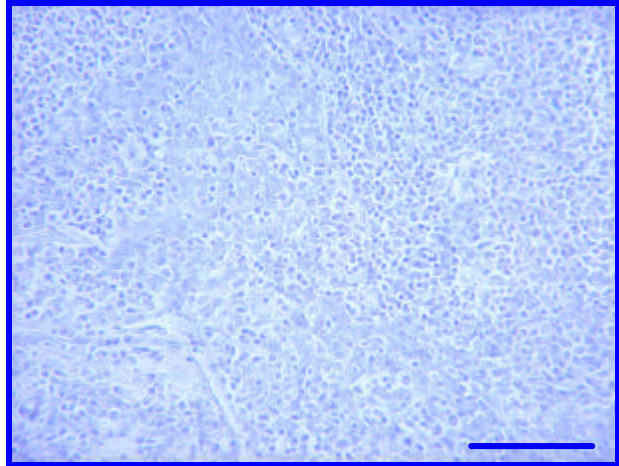
CHEMICON
INTERNATIONAL

IHC – Paraffin Staining Examples:

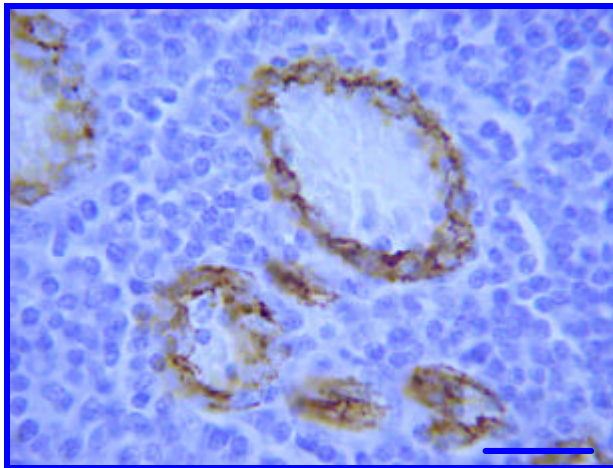
Pictures of Staining Without Epitope Retrieval: Human Tonsil



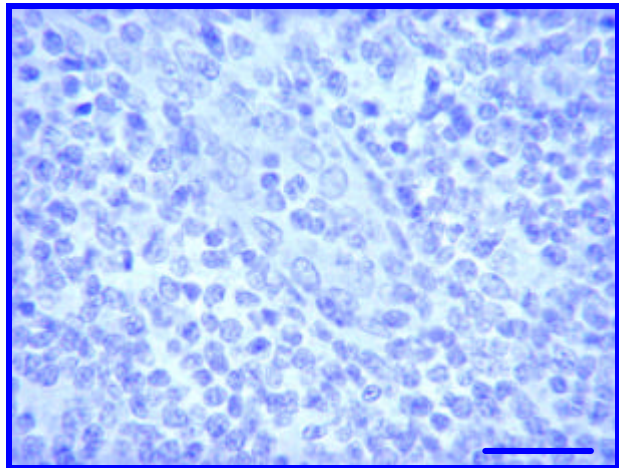
CD34 (IHC2009, Clone: QBEnd/10) staining of Human Tonsil. Tissue without Epitope retrieval, Prediluted Antibody, IHC-Select Detection with HRP-DAB. Vascular endothelial cells stain lightly (brown). Bar = 100 μ m.



Negative control staining of Human Tonsil. Tissue without Epitope retrieval, Prediluted Antibody, IHC-Select Detection with HRP-DAB. No background staining is detected. Bar = 25 μ m.



CD34 (IHC2009, Clone: QBEnd/10) staining of Human Tonsil. Tissue without Epitope retrieval, Prediluted Antibody, IHC-Select Detection with HRP-DAB. Vascular endothelial cells stain lightly (brown). Bar = 25 μ m.



Negative control staining of Human Tonsil. Tissue without Epitope retrieval, Prediluted Antibody, IHC-Select Detection with HRP-DAB. No background staining is detected. Bar = 25 μ m.