



3050 Spruce Street  
Saint Louis, Missouri 63103 USA  
Telephone 800-325-5832 • (314) 771-5765  
Fax (314) 286-7828  
email: techserv@sial.com  
sigma-aldrich.com

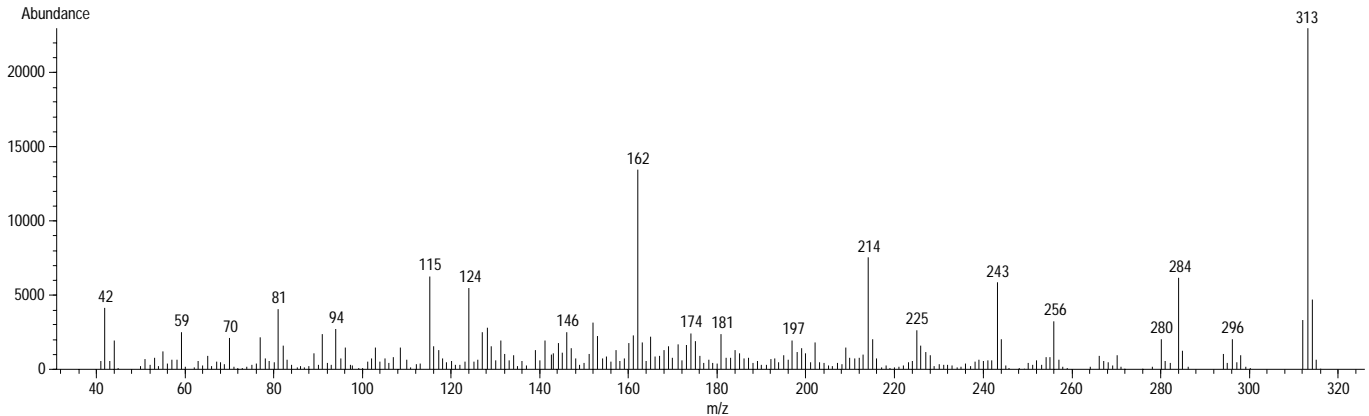
## Product Information

### ETHYLMORPHINE

Methanol Solution

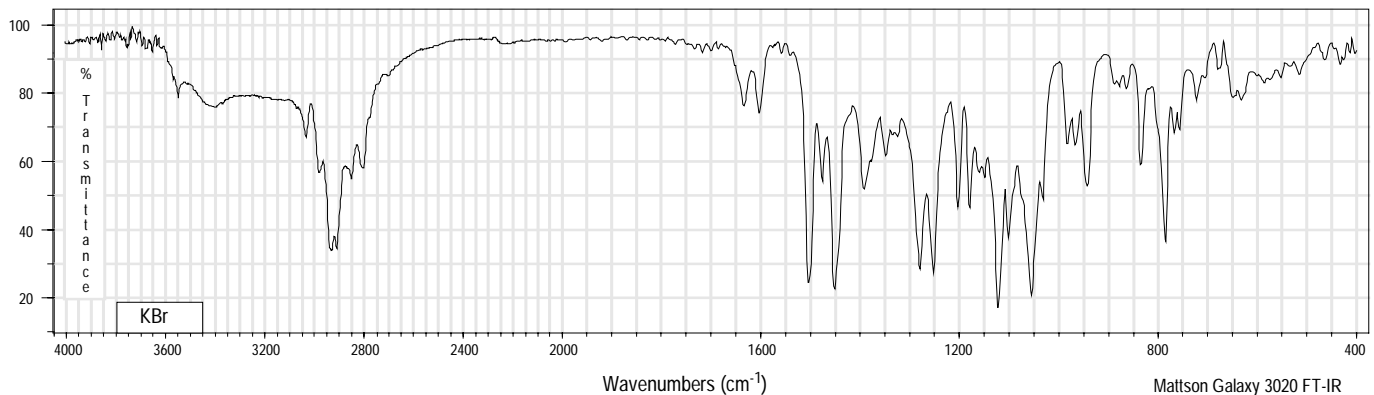
<b>Product Number</b>	E 3377	<b>Synonyms</b>	7,8-Didehydro-4,5-epoxy-3-ethoxy-17-methylmorphinan-6-ol
<b>Lot Number</b>	22K8807	<b>Stability</b>	If stored at 2-8°C in an air tight container, protected from light, decomposition of the product is less than 1% in 36 months. After opening, concentration may change due to loss of solvent.
<b>CAS Number</b>	[76-58-4]	<b>Expiration Date</b>	November 2005
<b>Concentration</b>	101 µg Ethylmorphine/mL GC grade methanol (conc. verified by UV)	<b>Storage</b>	2-8°C; After opening, transfer contents to small vial provided for your convenience.
<b>Molecular Formula</b>	C <sub>19</sub> H <sub>23</sub> NO <sub>3</sub>		
<b>Molecular Weight</b>	313.4		
<b>DEA Class</b>	Exempt preparation of Class II		

70 eV Electron Ionization Mass Spectrum



Hewlett-Packard 5890 Series II Gas Chromatograph  
Hewlett-Packard 5971 Mass Selective Detector  
Hewlett-Packard G1034C MS ChemStation (HP-DOS series)

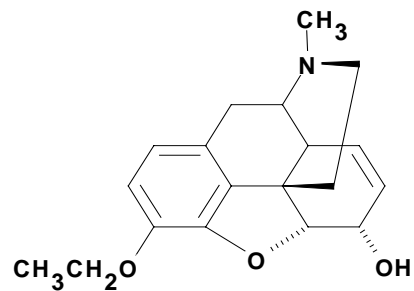
### FT-IR



Mattson Galaxy 3020 FT-IR

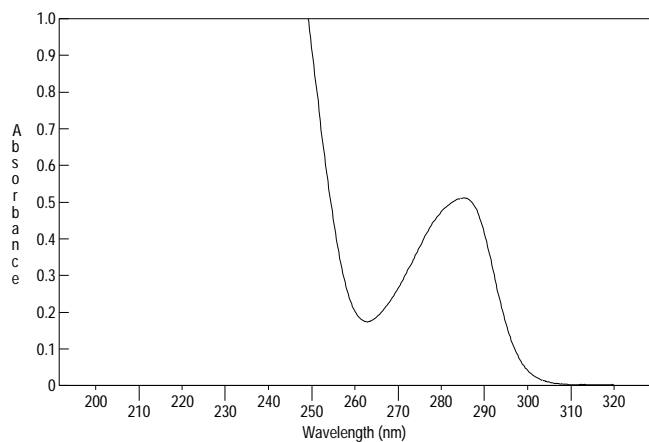
# ETHYLMORPHINE

Methanol Solution  
Product Number E 3377  
Lot Number 22K8807



## Ultraviolet Spectrum

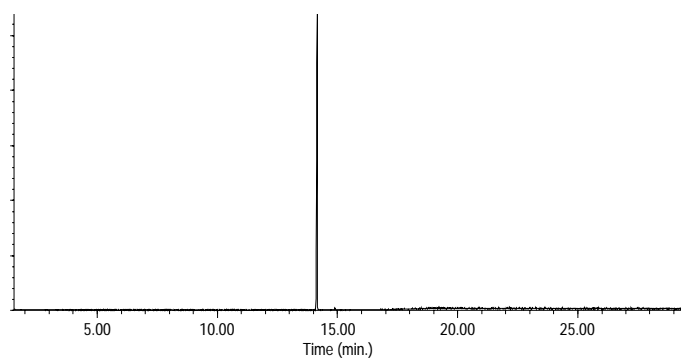
<b>Peak</b>	285.0 nm
<b>Absorbance</b>	0.512
<b>Solvent</b>	N. A.
<b>Dilution</b>	neat



Bio-Tek Uvikon XL

## Capillary Gas Chromatography

**Column** Supelco SPB-1 (Cat. No. 2-4162)  
**I.D.** 0.20 mm **Length** 15 m **Film Thickness** 0.20  $\mu$ m  
**Oven Temperature** 50°C (2 min.), then 15°/min. to 300°C, hold 11 min.  
**Injector Temperature** 250°C, Splitless  
**Detector** Hewlett-Packard 5971  
Mass Selective Detector (70 eV, 40-500 m/z)



Hewlett-Packard 5890

E 3377/22K8807/03/05/02

This product is not for *in vitro* diagnostic procedures. For R&D use only. Not for drug, household or other uses.

Sigma brand products are sold through Sigma-Aldrich, Inc.

Sigma-Aldrich, Inc. warrants that its products conform to the information contained in this and other Sigma-Aldrich publications.

Purchaser must determine the suitability of the product(s) for their particular use. Additional terms and conditions may apply.

Please see reverse side of the invoice or packing slip.